

DALE OF NORWAY

DALE OF NORWAY IS AN OFFICIAL LICENSEE
OF THE U.S. OLYMPIC COMMITTEE
AND THE 1998 U.S. OLYMPIC TEAM

36 USC 380



DALE OF NORWAY[®]
THE NAME THAT MADE NORWEGIAN SWEATERS WORLD FAMOUS



SWEATER FOR
CHILDREN

DALE

4

GARN



HEILO-FALK

1998 U.S. OLYMPIC TEAM COMMEMORATIVE SWEATER



WOMAN'S/MAN'S PULLOVER AND CAP

PULLOVER SIZES: XS S M L XL

PULLOVER MATERIALS: Heilo or Falk

Main Color:	600	650	700	750	800 gr
Contrast Color 1:	50	50	50	100	100 gr
Contrast Color 2:	50	50	50	50	50 gr
Contrast Color 3:	150	150	200	200	200 gr
Contrast Color 4:	50	50	50	50	50 gr

CAP SIZES: Woman Man

CAP MATERIALS: Heilo or Falk

Main Color:	100	100 gr
Contrast Colors 1-4:	50	50 gr or remnants of each

COLORWAYS:

Option	Main Color	Contrast Color
I	cherry red 4018	CC1 - deepest navy 5582 CC2 - gold 2537 CC3 - off-white 0017 CC4 - teal green 7562
II	deepest navy 5582	CC1 - flame red 3918 CC2 - gold 2537 CC3 - off-white 0017 CC4 - teal green 7562
III	charcoal 0083	CC1 - flame red 3918 CC2 - gold 2537 CC3 - natural 0020 CC4 - teal green 7562
IV	deep teal 7382	CC1 - cherry red 4018 CC2 - gold 2537 CC3 - off-white 0017 CC4 - deepest navy 5582

SUGGESTED NEEDLE SIZES:

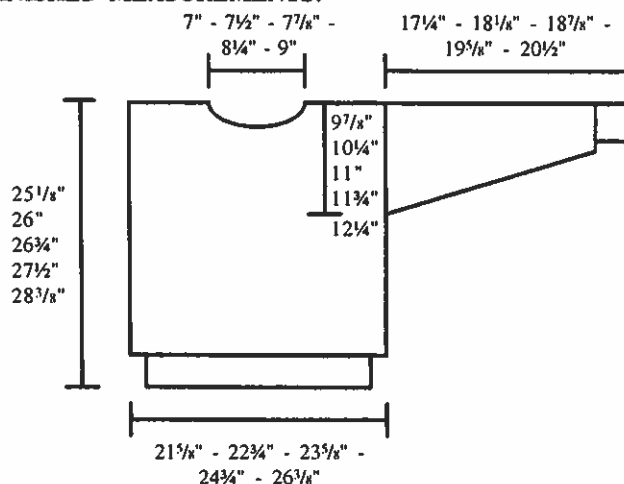
Cir and dp needles in US sizes 2 (2½mm), 3 (3mm) and 4 (3½mm). Crochet hook in US size B/1 (2mm) for picking up sts. Adjust sizes as necessary to obtain correct gauge.

GAUGE: 24 sts and 30 rds of plain st st, or 28 rds of pattern = 4" (10cm)

ACCESSORIES:

Zipper, sold with pattern instructions.

FINISHED MEASUREMENTS:



WATCH GAUGE CAREFULLY TO OBTAIN CORRECT FINISHED MEASUREMENTS!

PULLOVER WITH CREW NECK

BODY: Using MC and cir needle in US size 2 (2½mm), C O 234 - 242 - 252 - 264 - 280 sts. Join and work in a rd. Work K 1, P 1 ribbing for 2 3/8" (6cm) and on last rd of ribbing inc 32 - 36 - 38 - 38 - 42 sts evenly spaced = 266 - 278 - 290 - 302 - 322 sts on rd. Change to cir needle in US size 4 (3½mm). Place a marker at beg of rd and after 133 - 139 - 145 - 151 - 161 sts = side markers. Work Pattern I, beg as shown on graph, stop at next side marker and beg again as shown on graph in order to make pattern symmetrical on front and back of body. Change to cir needle in US size 3 (3mm). Using MC, work plain st st until body measures 13 3/8" (34cm) - 14 1/8" (36cm) - 15" (38cm) - 15 3/4" (40cm) - 16 1/2" (42cm). Change to cir needle in US size 4 (3½mm). Work Pattern II. When body measures 22" (56cm) - 22 3/4" (58cm) - 23 3/8" (60cm) - 24 3/8" (62cm) - 25 1/8" (64cm), beg front neck opening.

FRONT NECK OPENING: C OFF the 17 - 19 - 19 - 19 - 21 center sts of front for neck opening. Work back and forth, Rs beg at neck opening. Cont to C OFF, 3 - 3 - 4 - 4 - 5 sts at beg of next 2 Rs, then 3 sts at beg of next 2 Rs, then 2 sts at beg of next 4 - 4 - 4 - 4 - 6 Rs, then 1 st at beg of next 6 - 6 - 8 - 8 - 6 Rs, and when Pattern II is complete, work Pattern III. When there are 4 Rs of Pattern III rem, beg back neck opening.

BACK NECK OPENING: C OFF the 39 - 41 - 45 - 46 - 51 center sts of back for neck opening. Work each side of body separately, and cont to C OFF at back neck every other R, 2 sts 1 time. When Pattern III is complete, body should measure 25 1/8" (64cm) - 26" (66cm) - 26 3/4" (68cm) - 27 1/2" (70cm) - 28 3/8" (72cm). Using MC, K 1 R on RS, K 1 R on WS. C OFF. Complete second side of body to match first side.

SLEEVES: Using MC and dp needles in US size 2 (2½mm), C O 44 - 46 - 48 - 50 - 52 sts. Join and work in a rd. Work K 1, P 1 ribbing for 2 3/8" (6cm), and inc on last rd of ribbing 23 - 23 - 25 - 25 - 25 sts evenly spaced = 67 - 69 - 73 - 75 - 77 sts on rd. Change to dp needles in US size 4 (3½mm). Work Pattern I, center st on graph = center st of sleeve. At the same time, beg to inc 1 st at beg and end of rd, always leaving 2 sts between inc sts, every fourth rd 28 - 29 - 30 times for sizes XS - S - M, and every fourth rd 27 - 29 times and every other rd 7 - 6 times for sizes L - XL = 123 - 127 - 133 - 143 - 147 sts on rd. When Pattern I is complete, change to dp needles in US size 3 (3mm). Using MC, work plain st st until sleeve measures 12" (30½cm) - 12 3/4" (32½cm) - 13 1/2" (34½cm) - 14 3/8" (36½cm) - 15 1/8" (38½cm). Change to dp needles in US size 4 (3½mm). Work Pattern IV, center st on graph = center st of sleeve, then work Pattern III and when it's complete, sleeve should measure 17 1/4" (44cm) - 18 1/8" (46cm) - 18 7/8" (48cm) - 19 1/8" (50cm) - 20 1/2" (52cm). Using MC, P 5 rds for facing. C OFF.

FINISHING: Steam pieces lightly from WS. Sew seams with yarn. Measure upper edge of sleeves without stretching. Mark off this width on each side of the body, from the top down, for armholes. Sew 2 machine seams along each side and across the bottom of each armhole area = 4 sts in width. Cut between the pairs of machine seams. Sew each shoulder tog from RS through PR = K on WS. Sew each sleeve in from the RS through first st inside machine seams on body, and through lower loops of first P rd of sleeve facing. Sew facing over cut edges on WS of body.

NECKBAND: Using MC and dp needles in US size 4 (3½mm), pick up approx 122 - 126 - 126 - 130 - 130 sts around neck opening, starting at either shoulder. Pick up using method described on page 2. Join and work in a rd. Place a marker at beg and middle of rd = side markers. Work Neckband Pattern, beg as shown on graph, stop at next side marker, and beg again as shown, in order to make pattern symmetrical on front and back of neckband. When pattern is complete, change to dp needles in US size 2 (2½mm) and to MC. K 1 rd, then work 3 rds of K 1, P 1 ribbing, then P 1 rd = fold line. Work 3 more rds of ribbing in MC, then cont ribbing in this manner: 2 rds in CC4, 2 rds in MC, 2 rds in CC2, 8 rds in MC. C OFF in ribbing. Fold neckband at P rd and sew loosely to WS.

PULLOVER WITH ZIPPER

BODY: C O and work as for pullover with crew neck through the first 24 rds of Pattern II. On next rd, C OFF the 3 center sts of front for zipper opening, and on following rd, C O 3 new sts over the C OFF sts, new sts are cutting sts, to be K in MC all rds. Cont to work Pattern II until body measures 22" (56cm) - 22¾" (58cm) - 23¾" (60cm) - 24¾" (62cm) - 25½" (64cm), then beg front neck opening.

FRONT NECK OPENING: C OFF the 3 cutting sts at center front for neck

opening. Work back and forth, Rs beg at neck opening. C OFF first 7 - 8 - 8 - 8 - 9 sts of first 2 Rs, and cont to C OFF as for pullover with crew neck. When Pattern II is complete, work Pattern III.

BACK NECK SHAPING: As for pullover with crew neck.

SLEEVES: As for pullover with crew neck.

FINISHING: As for pullover with crew neck, but also sew 2 machine seams along each side of the 3 zipper opening sts at center front, and cut between the pairs of machine seams.

NECKBAND: As for pullover with crew neck, but work back and forth, row starting in front.

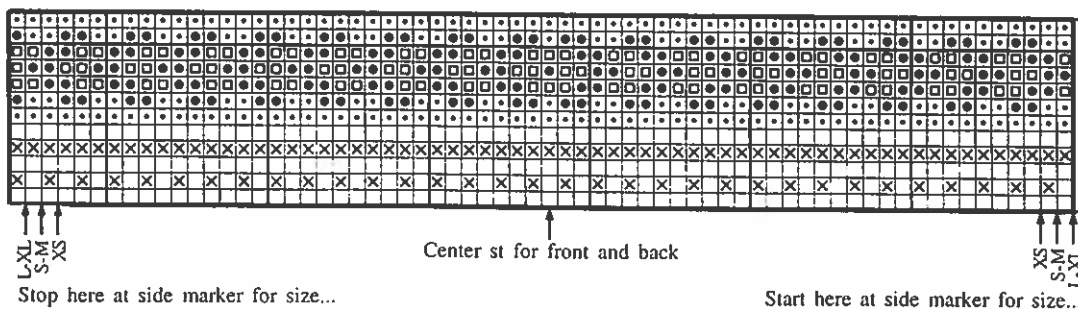
ZIPPER PLACKET: Using MC and DP needles in US size 2 (2½mm), pick up from right side, 24 sts per 4" (10cm) along left or right side of zipper opening, including neckband. Pick up using method described on page 2. Work back and forth. Work 2 Rs st st, P 1 R on RS, then work 4 more Rs st st. C OFF. Fold facing at P R and sew over cut edge on WS of body. Work the second side of opening as for first side. Sew in zipper.

CAP

CAP: Using MC and dp needles in US size 2 (2½mm), C O 121 - 129 sts. Join and work in a rd. Work 10 rds st st, P 1 rd. Change to dp needles in US size 4 (3½mm). Work 2 rds st st, and then work Cap Pattern, beg and end as shown on graph. When Cap Pattern has been completed, change to dp needles in US size 3 (3mm) and work st st until cap measures 8¼" (21cm) - 9" (23cm) from P rd, and dec 1 st on last rd.

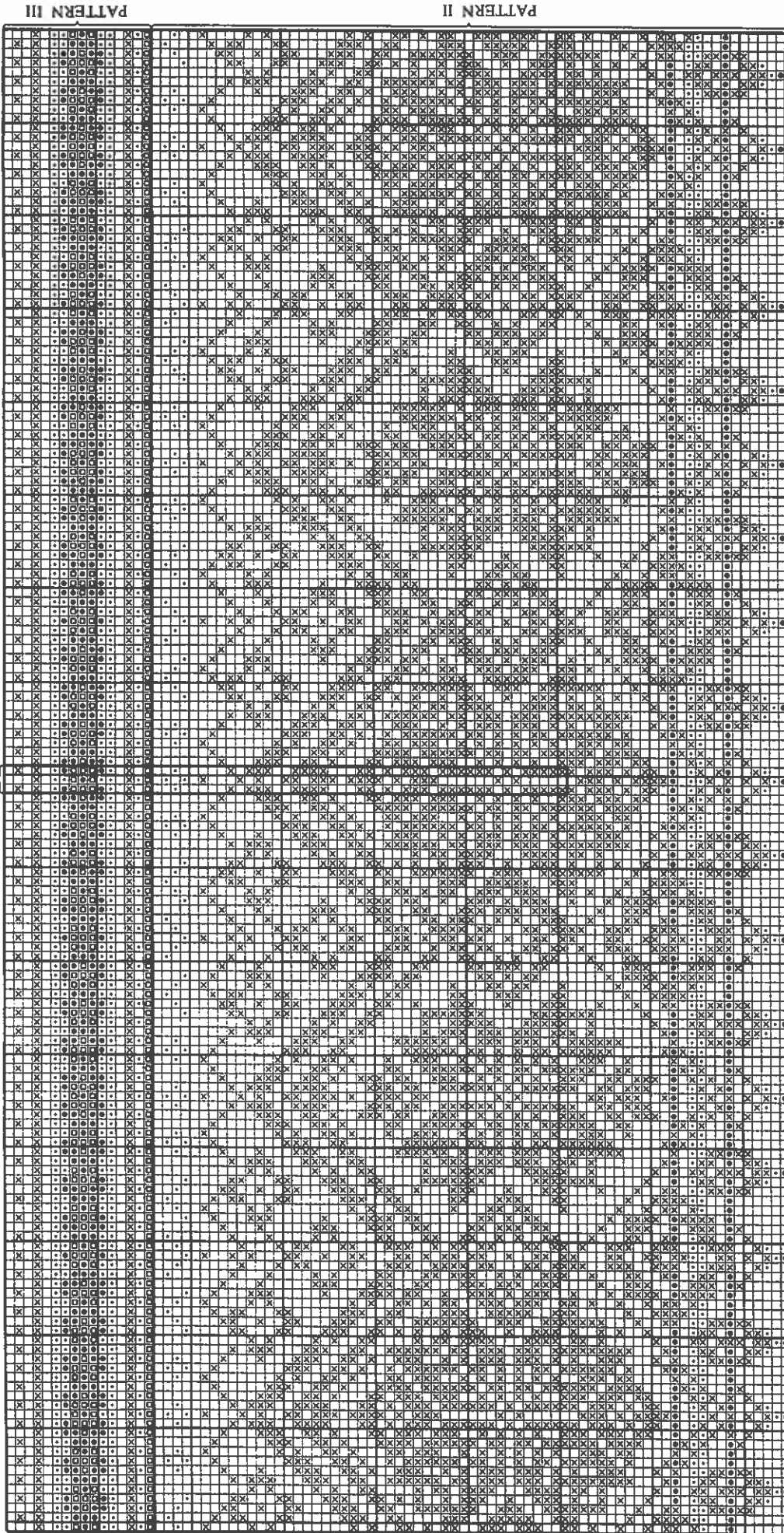
SHAPING: On next rd, K 2 tog over entire rd, then K 1 rd without dec, then K 2 tog over next rd, then K 1 rd without dec. Gather rem sts on a piece of yarn and fasten off. Using all CCs, braid a tie and make a pom pom. Fasten tassel to end of tie, and sew other end of tie to top of cap.

NECKBAND PATTERN



- = MC = cherry red/deepest navy/charcoal/deep teal
- ◻ = CC1 = deepest navy/flame red/flame red/cherry red
- ◻ = CC2 = gold/gold/gold/gold
- ⊗ = CC3 = off-white/off-white/natural/off-white
- ◐ = CC4 = teal green/teal green/teal green/deepest navy

ZIPPER OPENING



PATTERN III

PATTERN II

PATTERN I

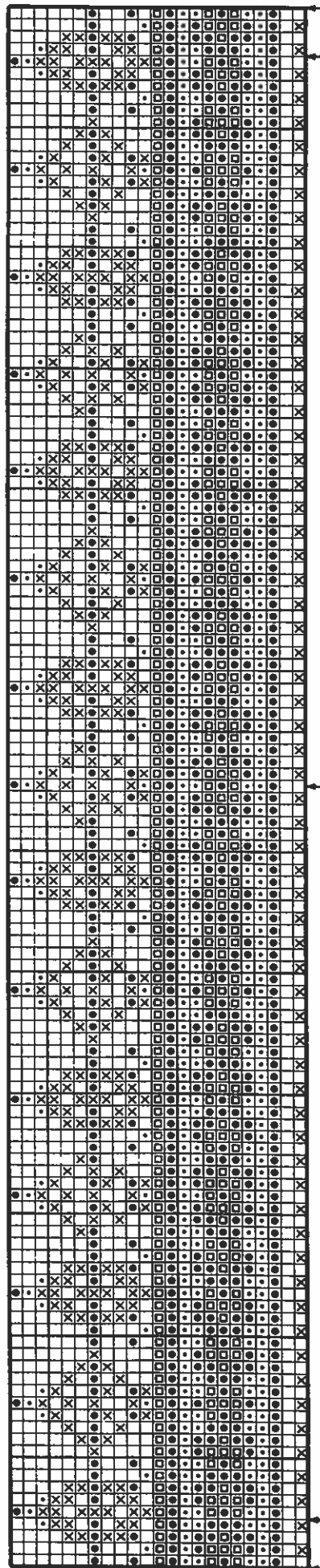
XL
L
M
S
XS
Start here at side marker for size...

Center st

XL
L
M
S
XS
Stop here at side marker for size...

- ☐ = MC = cherry red/deepest navy/charcoal/deep teal
- ◻ = CC1 = deepest navy/flame red/flame red/cherry red
- ◻ = CC2 = gold/gold/gold/gold
- ◻ = CC3 = off-white/off-white/natural/off-white
- ◻ = CC4 = teal green/teal green/teal green/deepest navy

CAP PATTERN

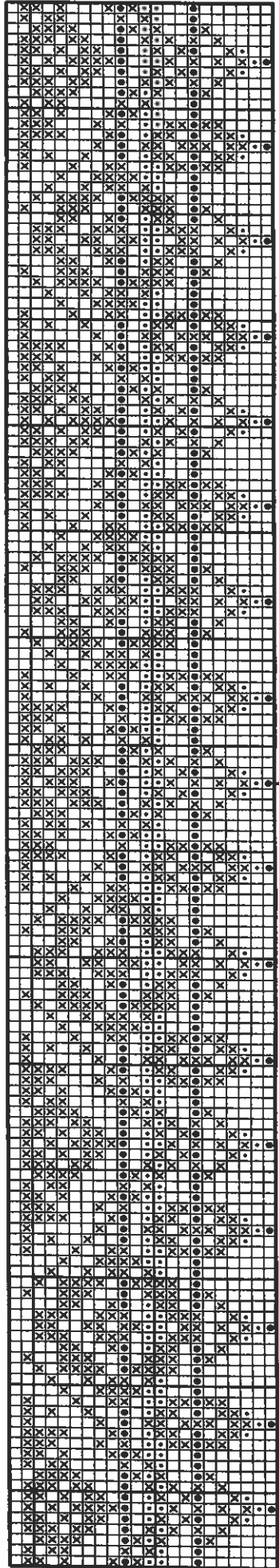


Man's Woman's
Stop here at end of row.

Front Center st

Woman's Man's
Start here at beg of row.

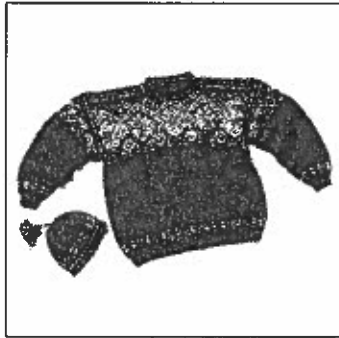
PATTERN IV



Center st

FALK - HEILO

1998 U.S. OLYMPIC TEAM COMMEMORATIVE SWEATER



CHILD'S PULLOVER AND CAP

PULLOVER SIZES: 2 4 6 8 10 12 years

PULLOVER MATERIALS: Falk or Heilo

Main Color:	300	350	400	450	500	550 gr
Contrast Color 1:	50	50	50	50	50	50 gr
Contrast Color 2:	50	50	50	50	50	50 gr
Contrast Color 3:	50	100	100	100	100	100 gr
Contrast Color 4:	50	50	50	50	50	50 gr

CAP SIZES: 2/4 6/8 10/12 years

CAP MATERIALS: Falk or Heilo

Main Color:	50	50	50 gr
Contrast Colors 1-4:	50	50	50 gr or remnants of each

COLORWAYS:

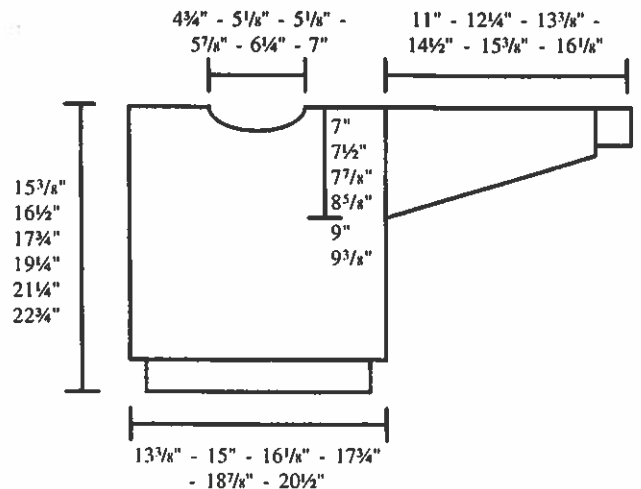
Option	Main Color	Contrast Color
I	cherry red 4018	CC1 - deepest navy 5582
		CC2 - gold 2537
		CC3 - off-white 0017
		CC4 - teal green 7562
II	deepest navy 5582	CC1 - flame red 3918
		CC2 - gold 2537
		CC3 - off-white 0017
		CC4 - teal green 7562

SUGGESTED NEEDLE SIZES:

Cir and dp needles in US sizes 2 (2½mm), 3 (3mm) and 4 (3½mm). Crochet hook in US size B/1 (2mm) for picking up sts. Adjust needle sizes as necessary to obtain correct gauge.

GAUGE: 24 sts and 28 rds of pattern, or 30 rds of plain st st = 4" (10cm)

FINISHED MEASUREMENTS:



WATCH GAUGE CAREFULLY TO OBTAIN CORRECT FINISHED MEASUREMENTS!

PULLOVER

BODY: Using MC and cir needle in US size 2 (2½mm), C O 140 - 156 - 172 - 188 - 204 - 224 sts. Join and work in a rd. Work K 1, P 1 ribbing for 1½" (4cm) - 1½" (4cm) - 1½" (4cm) - 2" (5cm) - 2" (5cm) - 2" (5cm), and on last rd of ribbing inc 26 sts evenly spaced = 166 - 182 - 198 - 214 - 230 - 250 sts on rd. Change to cir needle in US size 4 (3½mm). Place a marker at beg of rd and after 83 - 91 - 99 - 107 - 115 - 125 sts = side markers. Work Pattern I, beg as shown on graph, stop at next side marker, and beg again as shown on graph in order to make pattern symmetrical on front and back of body. When Pattern I is complete, change to cir needle in US size 3 (3mm). Using MC, work plain st st until body measures 6¼" (16cm) - 7½" (19cm) - 8⅝" (22cm) - 9⅞" (24cm) - 11⅞" (29cm) - 13" (33cm). Change to cir needle in US size 4 (3½mm). Work Pattern II, and when body measures 13" (33cm) - 14⅞" (36cm) - 15⅞" (39cm) - 16⅞" (43cm) - 18⅞" (48cm) - 20½" (52cm) beg front neck opening.

FRONT NECK OPENING: C OFF the 11 - 13 - 13 - 13 - 17 - 21 center sts of front for neck opening. Work back and forth, Rs beg at neck opening. Cont to C OFF, 3 sts at beg of next 2 Rs, then 2 sts at beg of next 4 Rs, then 1 st at beg of next 4 - 4 - 4 - 8 - 8 - 8 Rs, but when there are 6 - 6 - 8 - 8 - 8 - 8 Rs of Pattern II rem, beg back neck opening.

BACK NECK OPENING: C OFF the 19 - 21 - 21 - 25 - 29 - 33 center sts of back for neck opening. Work each side of body separately, and cont to C OFF at back neck every other R, 4 sts 1 time, then 1 st 1 time. Using MC, P 1 R on RS. C OFF. Complete second side of body to match first side.

SLEEVES: Using MC and dp needles in US size 2 (2½mm), C O 40 - 40 - 44 - 44 - 44 - 48 sts. Join and work in a rd. Work ribbing as for body, and inc on last rd of ribbing 13 - 15 - 13 - 17 - 17 - 17 sts evenly spaced = 53 - 55 - 57 - 61 - 61 - 65 sts on rd. Change to dp needles in US size 4 (3½mm). Work Pattern I, center st on graph = center st of sleeve. At the same time, beg to inc 1 at at beg and end of every fourth rd, always leaving 2 sts between inc sts, 17 - 19 - 20 - 22 - 24 - 25 times = 87 - 93 - 97 - 105 - 109 - 115 sts on rd. Change to dp needles in US size 3 (3mm). Using MC, work plain st st until sleeve measures 6⅝" (17cm) - 7⅞" (20cm) - 9" (23cm) - 10¼" (26cm) - 11" (28cm) - 11¾" (30cm). Change to dp needles in US size 4 (3½mm) and work Pattern III, where center st on graph = center st on sleeve. Using MC, K 1 rd, then P 5 rds for facing. C OFF.

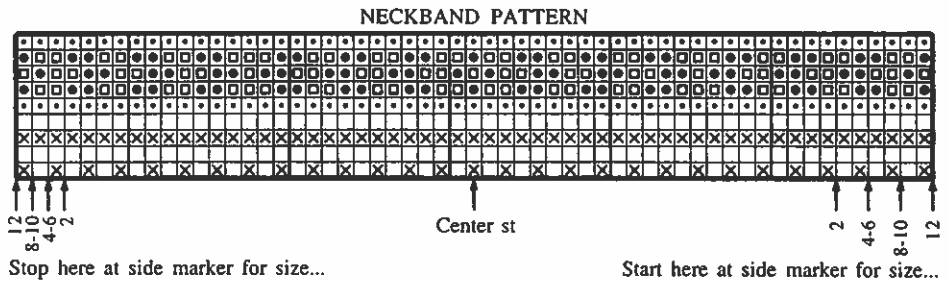
FINISHING: Steam pieces lightly from WS. Sew seams with yarn. Measure upper edge of sleeves without stretching. Mark off this width on each side of the body, from the top down, for armholes. Sew 2 machine seams along each side and across the bottom of each armhole area = 4 sts in width. Cut between the pairs of machine seams. Sew each shoulder tog from RS through P R. Sew each sleeve in from RS through first st inside machine seams on body, and through lower loops of first P rd of sleeve facing. Sew facing over cut edges on WS of body.

NECKBAND: Using MC and dp needles in US size 2 (2½mm), pick up 96 - 102 - 102 - 108 - 108 - 114 sts around neck opening starting at either shoulder. Pick up using method described on page 2. Join and work in a rd. K 1 rd, and place a marker at beg and middle of rd = side markers. Change to dp needles in US size 4 (3½mm). Work Neckband Pattern, beg as shown on graph, stop at next side marker, and beg again as shown on graph, in order to make pattern symmetrical on front and back of neckband. Change to dp needles in US size 2 (2½mm) and use MC to K 1 rd, then P 1 rd = fold line. Work K 1, P 1 ribbing in this manner: 2 rds in MC, 2 rds in CC4, 2 rds in MC, 2 rds in CC2, 2 rds in MC. C OFF. Fold neckband at fold line and sew neatly to WS.

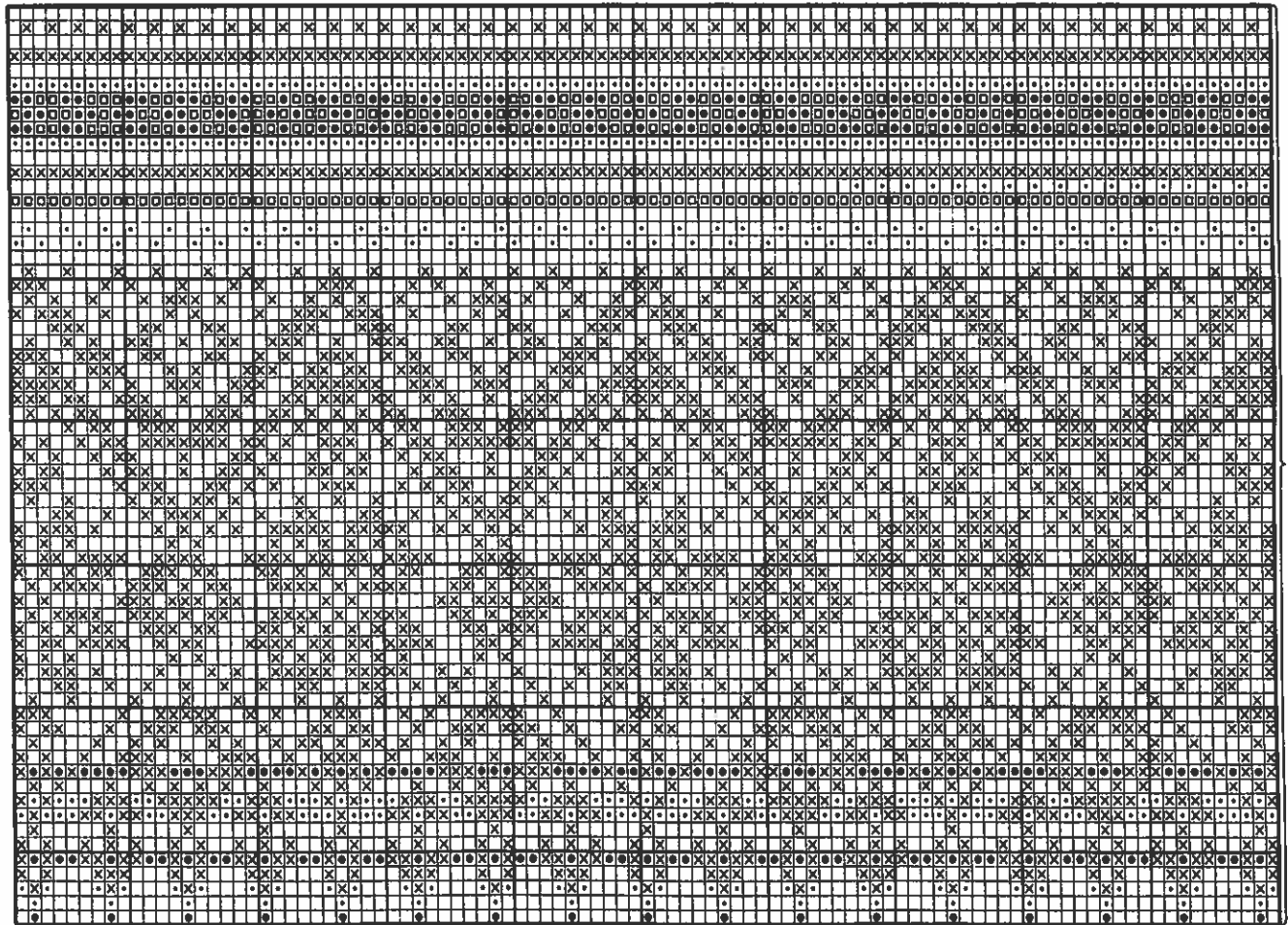
CAP

CAP: Using MC and dp needles in US size 2 (2½mm), C O 96 - 104 - 112 sts. Join and work in a rd. Work st st for 1¼" (3cm), then P 1 rd, then work 2 more rds st st, and inc 1 st on first rd. Change to dp needles in US size 4 (3½mm) and work Cap Pattern, beg and end as shown on graph. When pattern is complete, change to dp needles in US size 3 (3mm) and use MC to work st st until cap measures 5¼" (15cm) - 6¼" (16cm) - 7" (18cm). On next rd, K 2 tog over entire rd. Gather rem sts on a piece of yarn and fasten off. Using all CCs, braid a tie and make a tassel. Fasten tassel to end of tie, and sew other end of tie to top of cap.

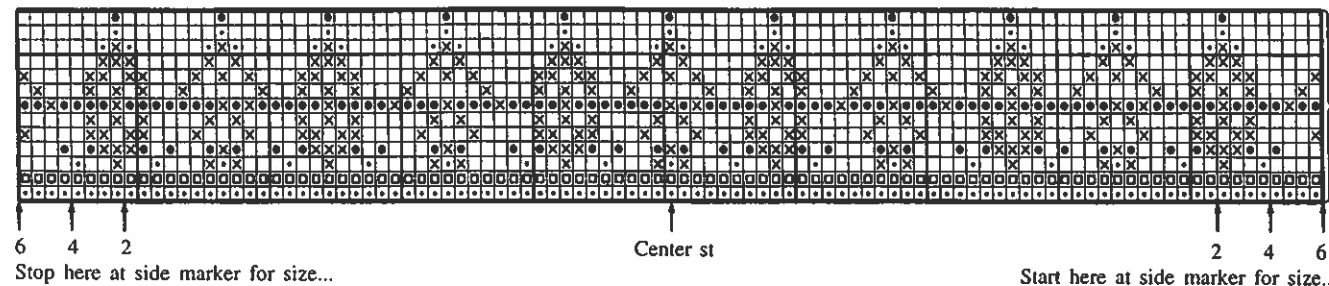
- = MC = cherry red/deepest navy
- ◻ = CC1 = deepest navy/flame red
- ◻ = CC2 = gold/gold
- ⊗ = CC3 = off-white/off-white
- = CC4 = teal green/teal green



CHILD'S PULLOVER SIZES 2-4-6 YEARS



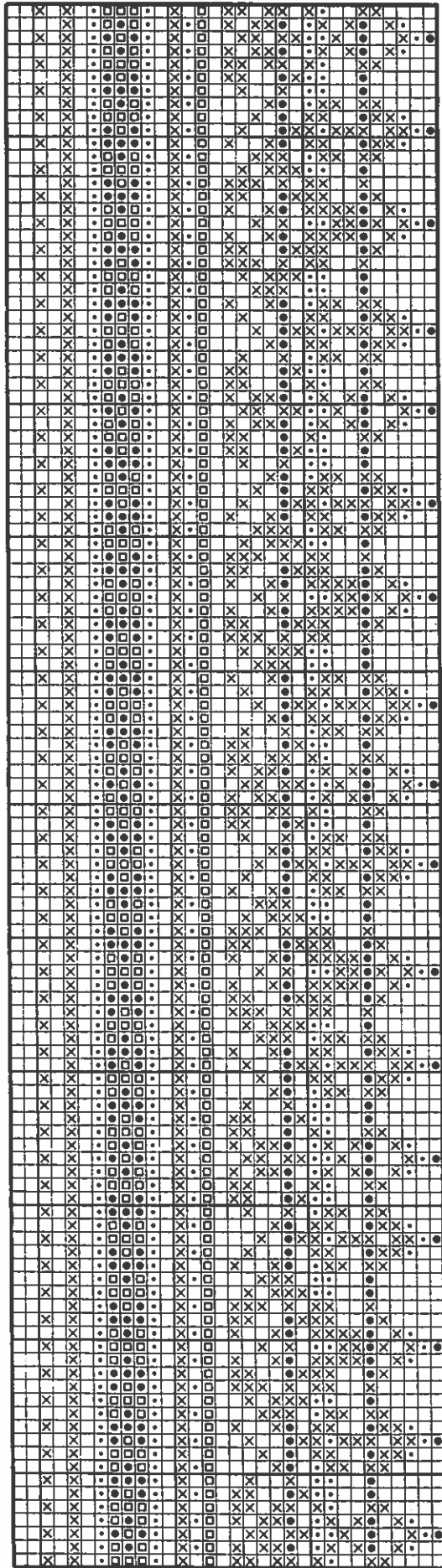
PATTERN II



PATTERN I

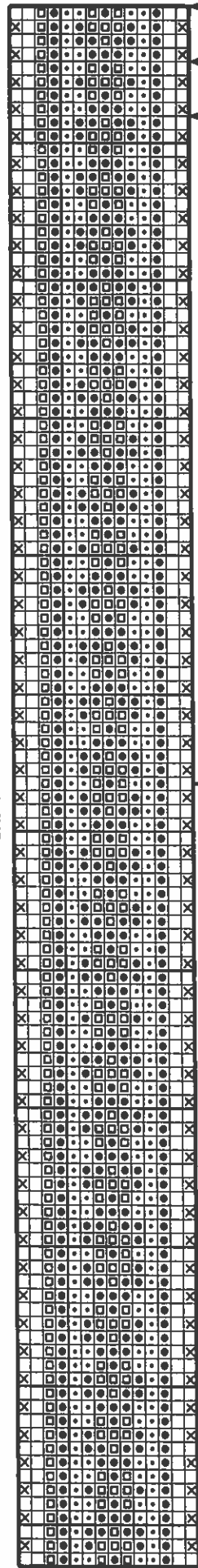
- = MC = cherry red/deepest navy
- ▤ = CC1 = deepest navy/flame red
- ▥ = CC2 = gold/gold
- ▦ = CC3 = off-white/off-white
- ▧ = CC4 = teal green/teal green

PATTERN IV



Center st

CAP PATTERN



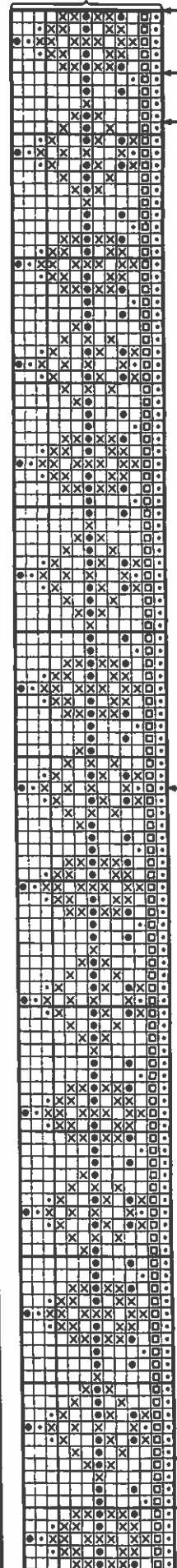
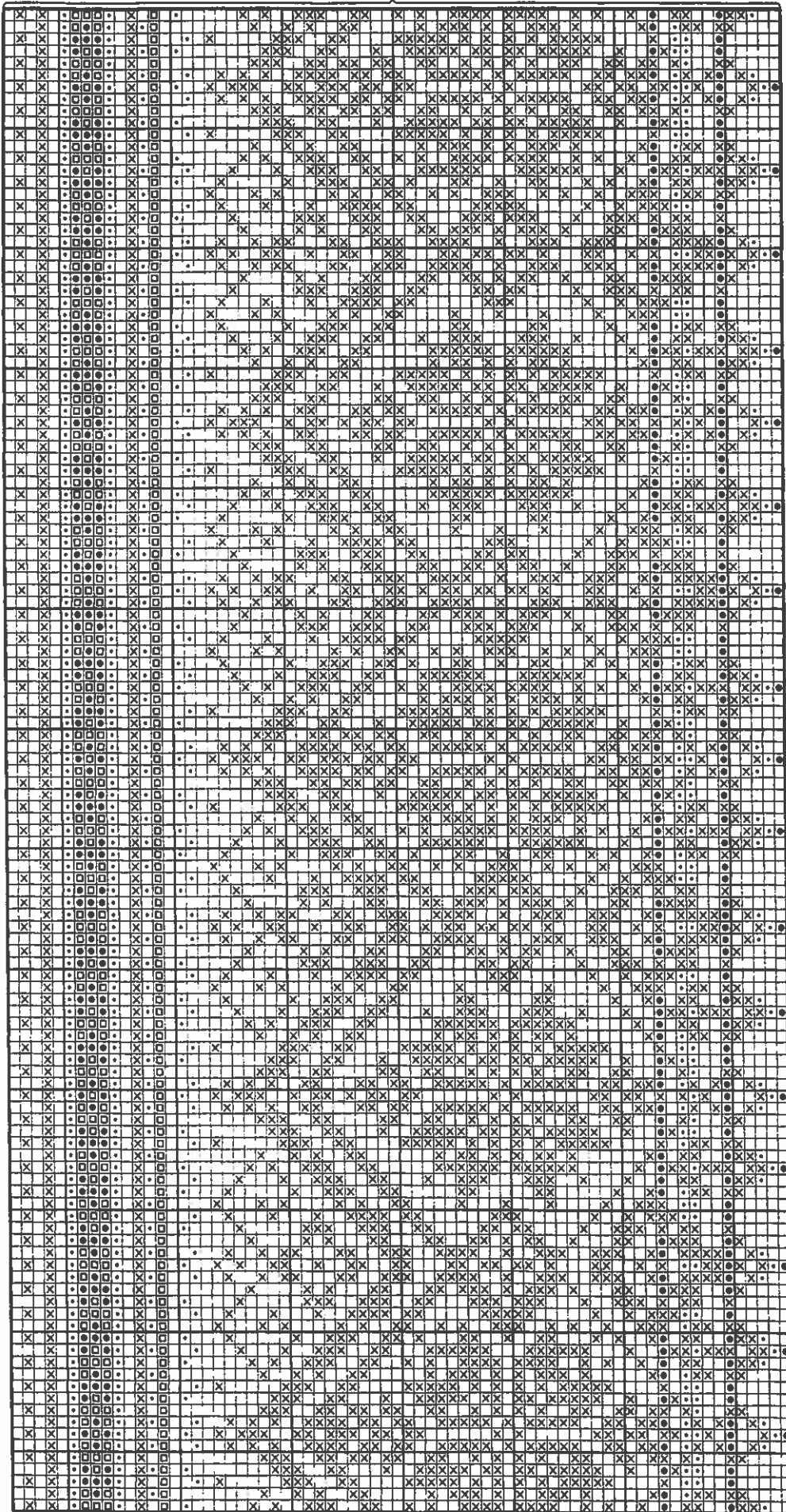
Front Center st

10/12 6/8 2/4

Stop here at end of row for size...

2/4 6/8 10/12
Start here at beg of row for size...

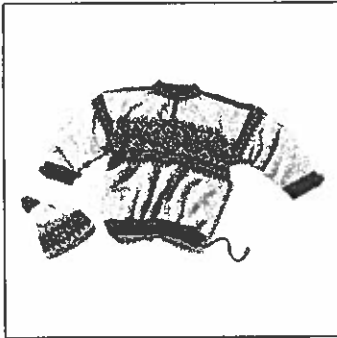
CHILD'S PULLOVER SIZES 8-10-12 YEARS



Start here at side marker for size...
12
10
8

Center st

12
10
8
Stop here at side marker for size...



WOMAN'S/MAN'S PULLOVER AND CAP

SIZES: XS S M L XL

PULLOVER MATERIALS: Heilo or Falk

Pullover in Colorway I:

Main Color:	650	650	700	750	800 gr
Contrast Color 1:	150	150	200	200	250 gr
Contrast Color 2:	50	50	50	50	50 gr
Contrast Color 3:	50	50	50	50	50 gr

Pullover in Colorway II:

Main Color:	550	550	600	650	700 gr
Contrast Color 1:	250	250	300	300	350 gr
Contrast Color 2:	50	50	50	50	50 gr
Contrast Color 3:	50	50	50	50	50 gr

CAP SIZES: Woman Man

CAP MATERIALS: Heilo or Falk

Main Color:	100	100 gr
Contrast Colors 1-3:	50	50 gr or remnants of each

COLORWAYS:

Option	Main Color	Contrast Color
I	black 0090	CC1 - natural 0020 CC2 - warm burgundy 4246 CC3 - moss green 9335
II	light sheep heather 2931	CC1 - deepest navy 5582 CC2 - warm burgundy 4246 CC3 - copper 3046

SUGGESTED NEEDLE SIZES:

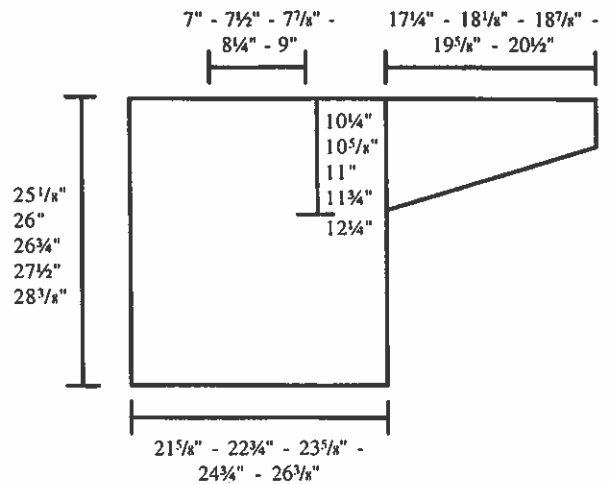
Cir and dp needles in US sizes 2 (2½mm), 3 (3mm) and 4 (3½mm). Crochet hook in US size B/1 (2mm) for picking up sts. Adjust needle sizes as necessary to obtain correct gauge.

GAUGE: 24 sts and 30 rds of plain st st, or 28 rds of pattern = 4" (10cm)

ACCESSORIES:

Sold with pattern instructions, and including leather tabs, drawstring, zipper and buttons.

FINISHED MEASUREMENTS:



WATCH GAUGE CAREFULLY TO OBTAIN CORRECT FINISHED MEASUREMENTS!

PULLOVER WITH ZIPPER

BODY: Using MC for Colorway I and CC1 for Colorway II, and cir needle in US size 2 (2½mm), C O 266 - 278 - 290 - 302 - 322 sts. Join and work in a rd. Work st st for 1⅞" (3cm), P 1 rd, work st st again for ⅝" (1½cm), then make 2 buttonholes, each over 3 sts, approx ⅝" (1½cm) from beg and end of rd. Work st st for another ⅝" (1½cm). Change to cir needle in US size 4 (3½mm), and place a marker at beg of rd and after 133 - 139 - 145 - 151 - 161 sts = side markers. Work Pattern I, then change to cir needle in US size 3 (3mm), and using MC, work st st until body measures 9⅞" (25cm) - 10⅞" (27cm) - 11⅞" (29cm) - 12¼" (31cm) - 13" (33cm) from P rd. Take all measurements from P rd. Change to cir needle in US size 4 (3½mm) and work Pattern II, then Pattern III. Beg patterns as shown on graph, stop at next side marker, and beg again as shown on graph, in order to make patterns symmetrical on front and back of body. Change to cir needle in US size 3 (3mm) and use MC to work st st. Work 2 rds, then on third rd, C OFF the 3 center sts of front for zipper opening. On following rd, C O 3 new sts over the C OFF sts, new sts are cutting sts. Cont to work st st, and when body measures 22" (56cm) - 22¾" (58cm) - 23⅞" (60cm) - 24⅞" (62cm) - 25⅞" (64cm) beg front neck opening.

FRONT NECK OPENING: C OFF the 3 cutting sts at center front for neck opening. Work back and forth, Rs beg at neck opening. C OFF 7 - 8 - 8 - 8 - 9 sts at beg of first 2 Rs, then 3 - 3 - 4 - 5 - 5 sts at beg of next 2 Rs, then 3 sts at beg of next 2 Rs, then 2 sts at beg of next 4 - 4 - 4 - 4 - 6 Rs, then 1 st at beg of next 6 - 6 - 8 - 8 - 6 Rs, but when body measures 24" (61cm) - 24¾" (63cm) - 25½" (65cm) - 26⅞" (67cm) - 27⅞" (69cm), work Pattern IV and beg back neck opening.

BACK NECK OPENING: C OFF the 39 - 41 - 45 - 47 - 51 center sts of back for neck opening. Work each side of body separately, and cont to C OFF at back neck every other R, 2 sts 1 time. When Pattern IV is complete, body should measure 25⅞" (64cm) - 26" (66cm) - 26¾" (68cm) - 27½" (70cm) - 28⅞" (72cm). Using CC1, K 1 R on RS, K 1 R on WS. C OFF. Complete second side of body to match first side.

SLEEVES: Using MC for Colorway I and CC1 for Colorway II, and dp needles in US size 2 (2½mm), C O 67 - 69 - 73 - 75 - 77 sts. Join and work in a rd. Work st st for 1⅞" (3cm), P 1 rd, work st st again for 1⅞" (3cm). Change to dp needles in US size 4 (3½mm). Work Pattern I, and at the same time, beg to inc 1 st at beg and end of rd, always leaving 2 sts between inc sts, every fourth rd 28 - 29 - 30 times for sizes XS - S - M and every fourth rd 27 - 29 times then every other rd 7 - 6 times for sizes L - XL = 123 - 127 - 133 - 143 - 147 sts on rd. When Pattern I is complete, change to dp needles in US size 3 (3mm). Using MC, work st st until sleeve measures 15" (38cm) - 15¾" (40cm) - 16½" (42cm) - 17¼" (44cm) - 18⅞" (46cm). Change to dp needles in US size 4 (3½mm) and work Pattern II, center st on graph = center

st of sleeve. When Pattern II is complete, use MC to K 1 rd, and sleeve should now measure 17¼" (44cm) - 18⅞" (46cm) - 18⅞" (48cm) - 19⅝" (50cm) - 20½" (52cm). P 5 rds for facing, then C OFF.

FINISHING: Steam pieces lightly from WS. Sew seams with yarn. Measure upper edge of sleeves without stretching. Mark off this width on each side of the body, from the top down, for armholes. Sew 2 machine seams along each side and across the bottom of each armhole area = 4 sts in width, and along each side of the 3 cutting sts at center front. Cut between the pairs of machine seams. Sew each shoulder tog from RS through P R = K on WS. Sew each sleeve in from RS through first st inside machine seams on body, and through lower loops of first P rd of sleeve facing. Sew facing over cut edges on WS of body. Fold lower body and sleeves at P rd and sew loosely to WS. Sew leather tabs onto lower body and sleeves, as shown in photo. Thread drawstring through tabs on body and put a stopper on each end of drawstring.

ZIPPER PLACKET: Using MC for Colorway I and CC1 for Colorway II, and dp needles in US size 2 (2½mm), pick up approx 22 sts along left or right side of zipper opening. Pick up using method described on page 2. For Colorway I, work 1 R st st in CC2, 1 R in CC3, 1 R in MC. For Colorway II, 1 R st st in CC2, 1 R in CC3, and 1 R in CC1. P 1 R on RS, then work 4 Rs st st. C OFF. Fold placket at P R and sew over cut edge on WS of body. Work second side of opening as for first side.

NECKBAND: Using MC for Colorway I and CC1 for Colorway II, and cir needle in US size 4 (3½mm), pick up 120 - 126 - 126 - 132 - 132 sts around neck opening, including top of zipper placket. Pick up using method described on page 2. Work back and forth. Work 2 Rs st st, then Neckband Pattern. When pattern is complete, change to cir needle in US size 2 (2½mm). Work 1 R st st, then 3 Rs K 1, P 1 ribbing, using MC for Colorway I, and CC1 for Colorway II, then P 1 R on RS = fold line. Work 2 more Rs of ribbing, then change to CC2 and work 1 R st st, 1 R ribbing. Change to MC for Colorway I, or CC1 for Colorway II, and work 2 Rs ribbing. Change to CC3 and work 2 Rs ribbing. Change to MC for Colorway I, or CC1 for Colorway II, and work 8 Rs ribbing. C OFF in ribbing. Sew zipper into opening at center front. Fold neckband at fold line, and sew loosely to WS. Sew neckband closed at both ends. Crochet 2 button loops on 1 end of neckband, and sew 2 buttons on other end.

PULLOVER WITH CREW NECK

BODY: C O and work as for pullover with zipper, up to and including Pattern III. Then use MC to work st st, but omit the C OFF and C O of sts at center front for zipper opening. Work until body measures 22" (56cm) - 22¾" (58cm) - 23⅝" (60cm) - 24⅜" (62cm) - 25⅞" (64cm), then beg front neck opening.

FRONT NECK OPENING: C OFF the 17 - 19 - 19 - 21 center sts of front for neck opening. Work back and forth, Rs beg at neck opening. Cont to C OFF for neck as for pullover with zipper.

BACK NECK OPENING: As for pullover with zipper.

SLEEVES: As for pullover with zipper.

FINISHING: As for pullover with zipper, but omit sewing and cutting at center front for zipper opening.

NECKBAND: As for pullover with zipper but row starts by either shoulder. Use dp needles, and join and work in a rd.

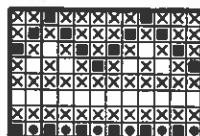
CAP

CAP: Using MC and dp needles in US size 2 (2½mm), C O 121 - 129 sts. Join and work in a rd. Work 10 rds st st, P 1 rd, then change to dp needles in US size 4 (3½mm). Work 2 rds st st, then Cap Pattern, change to dp needles in US size 4 (3½mm) and work st st in MC until cap measures 8¼" (21cm) - 9" (23cm) from P rd, and dec 1 st on last rd.

SHAPING: On next rd, K 2 tog over entire rd, K 1 rd without dec, K 2 tog over next rd, K 1 rd without dec. Gather rem sts on a piece of yarn and fasten off. Using MC, braid a tie. Using MC, CC2 and CC3, make a tassel. Fasten tassel to end of tie, and fasten other end of tie to top of cap.

- = MC = black/light sheep heather
- ⊗ = CC1 = natural/deepest navy
- = CC2 = warm burgundy/warm burgundy
- ⊙ = CC3 = moss green/copper

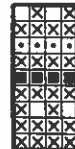
NECKBAND PATTERN



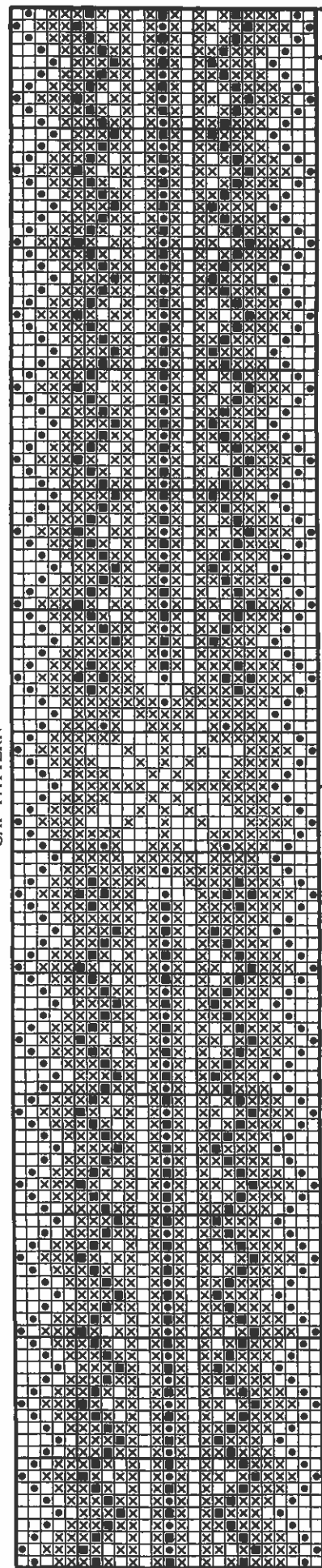
PATTERN IV



PATTERN I



CAP PATTERN

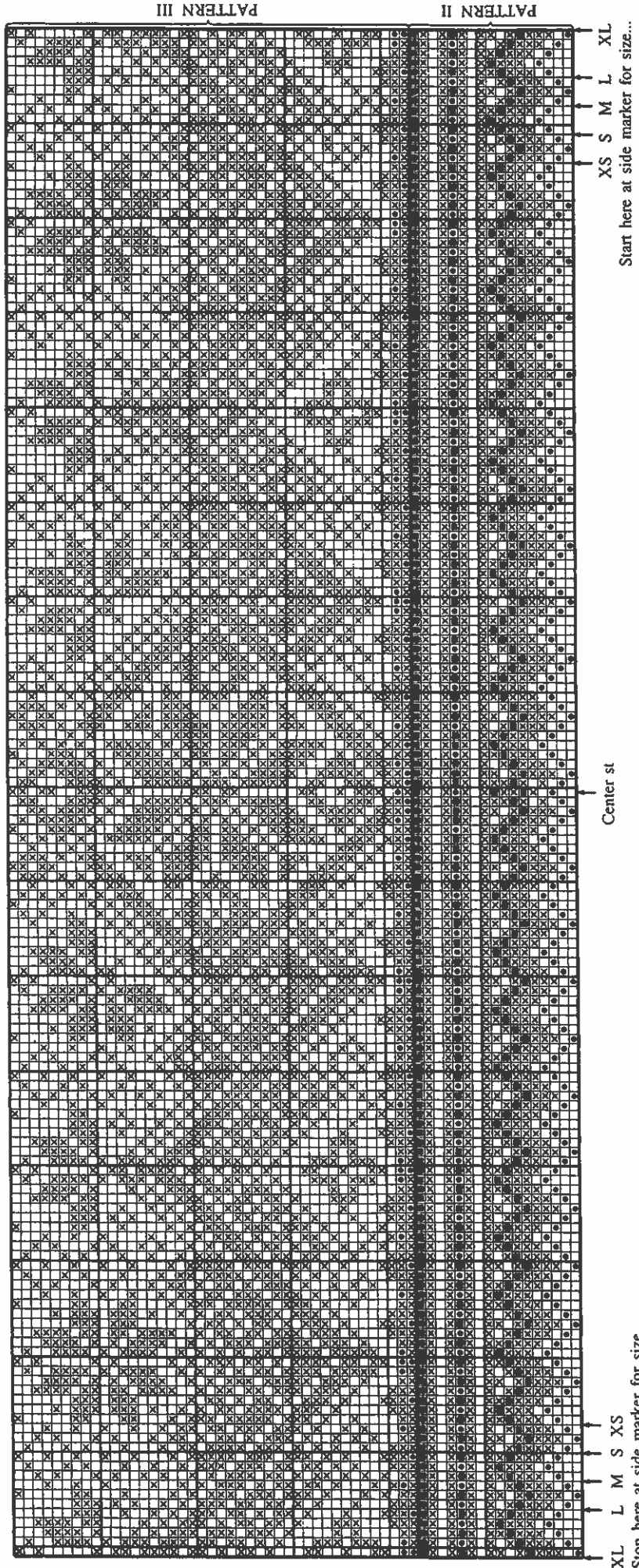


Woman's Man's
Start here for size...

Front Center st

Man's Woman's
Stop here for size...

- = MC = black/light sheep heather
- ⊗ = CC1 = natural/deepest navy
- = CC2 = warm burgundy/warm burgundy
- = CC3 = moss green/copper





WOMAN'S/MAN'S PULLOVER AND CAP

PULLOVER SIZES: XS S M L XL

PULLOVER AND CAP MATERIALS: Heilo or Falk

Main Color:	300	350	400	450	500 gr
Contrast Color 1:	200	200	250	250	300 gr
Contrast Color 2:	150	150	150	200	200 gr
Contrast Color 3:	150	150	200	200	200 gr
Contrast Color 4:	50	50	50	50	50 gr

CAP SIZES: Woman Man

CAP MATERIALS: Heilo or Falk

Materials for Cap are included with materials for pullover as listed above.

COLORWAYS:

Option	Main Color	Contrast Color
I	off-white 0017	CC1 - black 0090
		CC2 - dark olive 8972
		CC3 - sand gray 0004
		CC4 - lave rust 3727
II	medium sheep heather 3841	CC1 - deepest navy 5582
		CC2 - dark olive 8972
		CC3 - natural 0020
		CC4 - warm burgundy 4246

SUGGESTED NEEDLE SIZES:

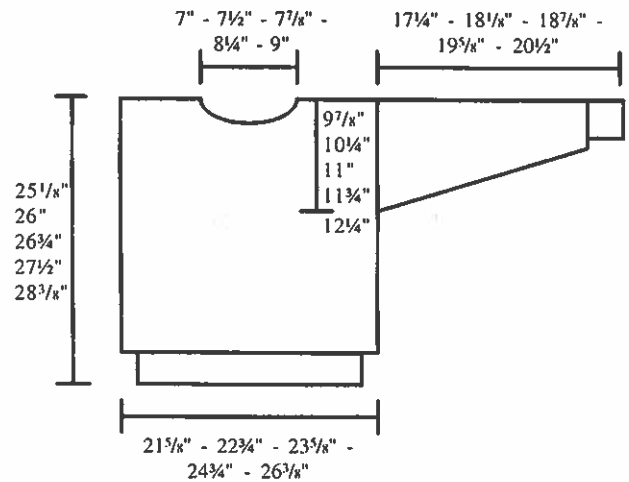
Cir and dp needles in US sizes 2 (2½mm) and 3 (3mm) or 4 (3½mm). Crochet hook in US size B/1 (2mm) for picking up sts. Adjust needle sizes as necessary to obtain correct gauge.

GAUGE: 24 sts and 30 rds of plain st st or 28 rds of pattern = 4" (10cm)

ACCESSORIES:

Zipper, sold with pattern instructions.

FINISHED MEASUREMENTS:



WATCH GAUGE CAREFULLY TO OBTAIN CORRECT FINISHED MEASUREMENTS!

PULLOVER WITH CREW NECK

BODY: Using CC1 and cir needle in US size 2 (2½mm), C O 234 - 242 - 252 - 264 - 280 sts. Join and work in a rd. Work K 1, P 1 ribbing for 1½" (4cm) and inc on last rd of ribbing 32 - 36 - 38 - 38 - 42 sts evenly spaced = 266 - 278 - 290 - 302 - 322 sts on rd. Change to cir needle in US size 3 (3mm) or 4 (3½mm). Place a marker at beg of rd and after 133 - 139 - 145 - 151 - 161 sts = side markers. Work Pattern I, beg as shown on graph, stop at next side marker and beg again as shown on graph, in order to make pattern symmetrical on front and back of body. When Pattern I is complete, work Main Pattern until body measures 18 1/8" (46cm) - 18 7/8" (48cm) - 19 5/8" (50cm) - 20 1/2" (52cm) - 21 1/4" (54cm), then work Pattern II, then Pattern I. When body measures 22" (56cm) - 22 3/4" (58cm) - 23 3/8" (60cm) - 24 1/8" (62cm) - 25 1/8" (64cm) beg front neck opening.

FRONT NECK OPENING: C OFF the 17 - 19 - 19 - 19 - 21 center sts of front for neck opening. Work back and forth, Rs beg at neck opening. Cont to C OFF, 3 - 3 - 4 - 5 - 5 sts at beg of next 2 Rs, then 3 sts at beg of next 2 Rs, then 2 sts at beg of next 4 - 4 - 4 - 4 - 6 Rs, then 1 st at beg of next 6 - 6 - 8 - 8 - 6 Rs. When there are 4 Rs of Pattern I rem, beg back neck opening.

BACK NECK OPENING: C OFF the 39 - 41 - 45 - 47 - 51 center sts of back for neck opening. Work each side of the body separately, and cont to C OFF at back neck every other R, 2 sts 1 time. Complete Pattern I, and body should now measure 25 1/8" (64cm) - 26" (66cm) - 26 3/4" (68cm) - 27 1/2" (70cm) - 28 3/8" (72cm). Using CC1, K 1 R on RS, K 1 R on WS. C OFF. Complete second side of body to match first side.

SLEEVES: Using CC1 and dp needles in US size 2 (2½mm), C O 44 - 46 - 48 - 50 - 52 sts. Join and work in a rd. Work K 1, P 1 ribbing for 1½" (4cm) and inc on last rd of ribbing 23 - 23 - 25 - 25 - 25 sts evenly spaced = 67 - 69 - 73 - 75 - 77 sts on rd. Change to dp needles in US size 3 (3mm) or 4 (3½mm). Work Pattern I, center st on graph = center st of sleeve. At the same time, beg to inc 1 st at beg and end of rd, always leaving 2 sts between inc sts, every fourth rd 28 - 29 - 30 times for sizes XS - S - M, and every fourth rd 27 - 29 times, then every other rd 7 - 6 times for sizes L - XL = 123 - 127 - 133 - 143 - 147 sts on rd. When Pattern I is complete, work Main Pattern until sleeve measures 12 1/2" (32cm) - 13 3/8" (34cm) - 14 1/8" (36cm) - 15" (38cm) - 15 3/4" (40cm) for right sleeve, and 10 1/4" (26cm) - 11" (28cm) - 11 3/4" (30cm) - 12 1/2" (32cm) - 13 3/8" (34cm) for left sleeve. For left sleeve, cont by working Pattern II, then Pattern I. For right sleeve, cont by working Pattern I. Center st on graphs = center st of sleeve. When patterns are complete, sleeve should measure 17 1/4" (44cm) - 18 1/8" (46cm) - 18 7/8" (48cm) - 19 5/8" (50cm) - 20 1/2" (52cm). Using CC1, P 5 rds for facing. C OFF.

FINISHING: Steam pieces lightly from WS. Sew seams with yarn. Measure upper edge of sleeves without stretching. Mark off this width on each side of the body, from the top down, for armholes. Sew 2 machine seams along

each side and across the bottom of each armhole area = 4 sts in width. Cut between the pairs of machine seams. Sew each shoulder tog from RS through PR = K on WS. Sew each sleeve in from RS through first st inside machine seams on body, and through lower loops of first P rd of facing on sleeve. Sew facing over cut edges on WS of body.

NECKBAND: Using CC1 and dp needles in US size 2 (2½mm), pick up 128 - 128 - 132 - 136 - 136 sts around neck opening starting at either shoulder. Pick up using method described on page 2. Join and work in a rd. Work K 1, P 1 ribbing for 2¾" (6cm), then P 1 rd = fold line, then work ribbing again in this manner: 8 rds of CC1, 2 rds of CC2, 2 rds of CC1, 2 rds of CC4, 8 rds of CC1. C OFF in ribbing. Fold neckband at fold line and sew loosely to WS.

PULLOVER WITH ZIPPER

BODY: C O and work as for pullover with crew neck, up to and including Main Pattern. Now work Pattern II and on the first rd, C OFF the 3 center sts of front for zipper opening. On next rd, C O 3 new sts over the C OFF sts, new sts are cutting sts, to be worked in 1 color on all rds. When Pattern II is complete, work Pattern I. Work until body measures 22" (56cm) - 22¾" (58cm) - 23½" (60cm) - 24½" (62cm) - 25½" (64cm), then beg front neck opening.

FRONTNECK OPENING: C OFF the 3 cutting sts at center front for neck opening, and work back and forth, Rs beg at neck opening. C OFF 7 - 8 - 8 - 8 - 9 sts at beg of first 2 Rs, then cont to C OFF as for pullover with crew neck.

BACK NECK OPENING: As for pullover with crew neck.

SLEEVES: As for pullover with crew neck.

FINISHING: As for pullover with crew neck, but also sew 2 machine seams along each side of the cutting sts at center front, and cut between the pairs of seams.

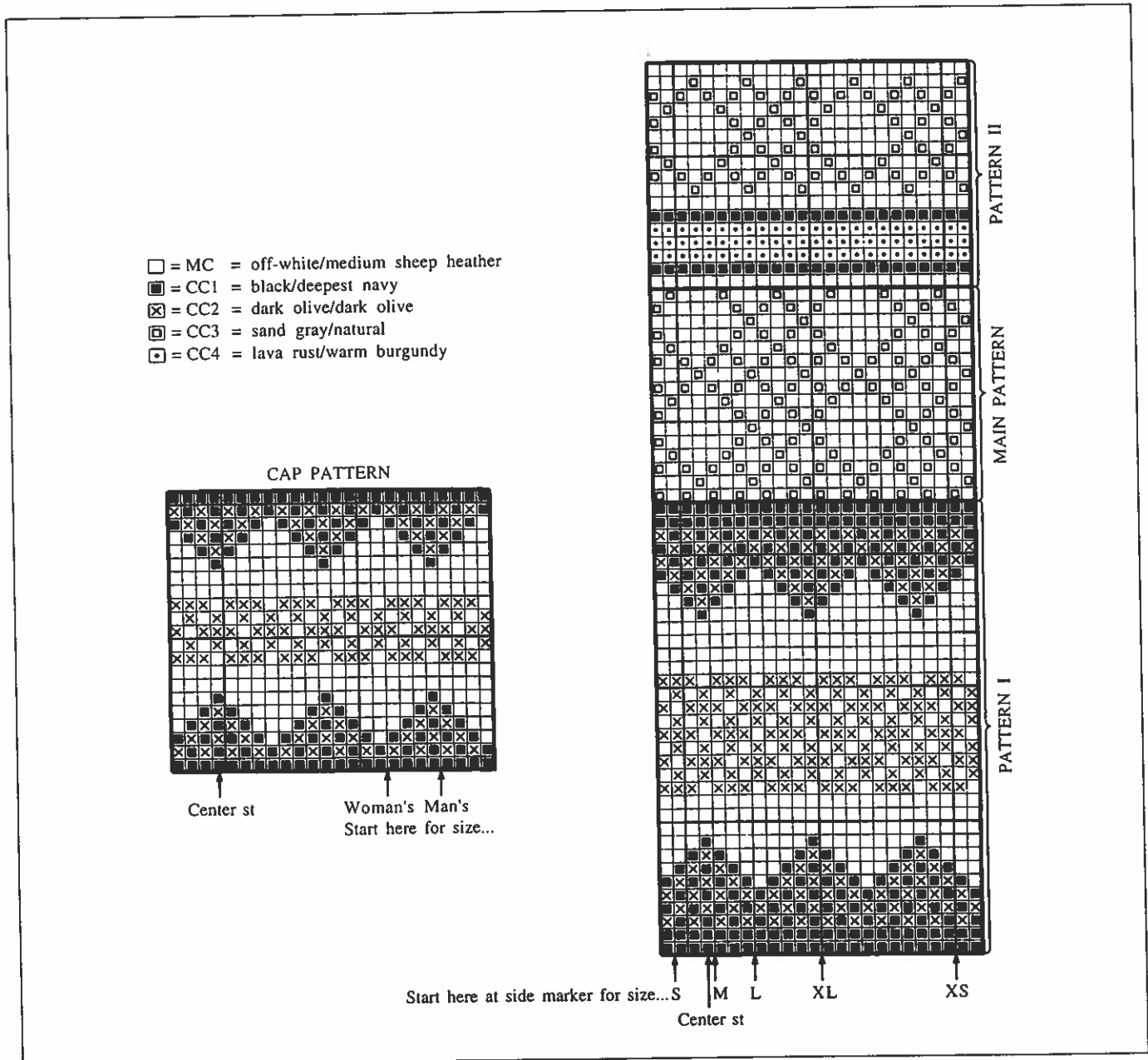
NECKBAND: As for pullover with crew neck, start picking up in front and work back and forth.

ZIPPER PLACKET: Using CC1 and dp needles in US size 2 (2½mm), pick up sts along left or right side of zipper opening, including end of neckband. Pick up using method described on page 2. Work 2 Rs of st st, then P 1 R on RS, then work 4 Rs st st, and C OFF. Work second side of zipper opening to match first side. Fold plackets at PR and sew neatly over cut edges on WS of body. Sew in zipper.

CAP

CAP: Using CC1 and dp needles in US size 2 (2½mm), C O 121 - 129 sts Join and work in a rd. Work 10 rds st st, then P 1 rd. Change to dp needle: in US size 3 (3mm) or 4 (3½mm). Work Cap Pattern, beg as shown on graph then work Main Pattern until cap measures 8¼" (21cm) - 9" (23cm) from F rd, and on last rd dec 1 st.

SHAPING: Using MC, on next rd K 2 tog over entire rd, then K 1 rd without dec, then K 2 tog over next rd, then K 1 rd without dec. Gather rem sts or a piece of yarn and fasten off. Using CC1, make a pom pom and fasten to top of cap.



HEILO - FALK

NJORD



WOMAN'S/MAN'S PULLOVER AND CAP

PULLOVER SIZES: XS S M L XL

PULLOVER MATERIALS: Heilo or Falk

Main Color:	650	700	700	750	800 gr
Contrast Color 1:	150	150	200	200	200 gr
Contrast Color 2:	150	150	150	150	200 gr

CAP SIZES: Woman Man

CAP MATERIALS: Heilo or Falk

Main Color:	100	100 gr
Contrast Color 1:	50	50 gr or remnants

COLORWAYS:

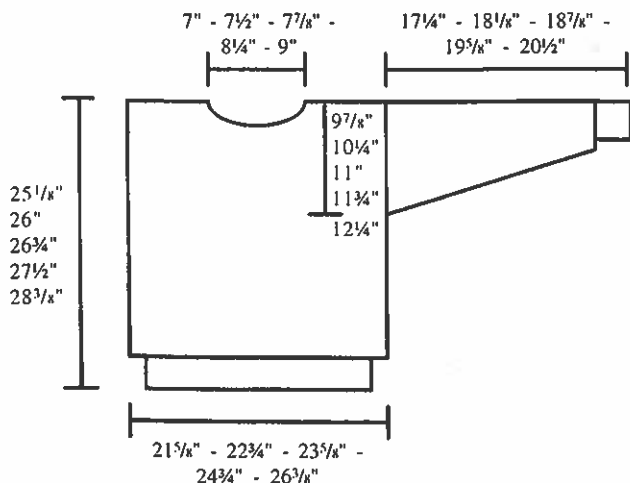
Option	Main Color	Contrast Color
I	deepest navy 5582	CC1 - off-white 0017 CC2 - soft blue 5943
II	deep teal 7382	CC1 - off-white 0017 CC2 - deepest navy 5582

SUGGESTED NEEDLE SIZES:

Cir and dp needles in US sizes 2 (2½mm) and 3 (3mm) or 4 (3½mm). Crochet hook in US size B/1 (2mm) for picking up sts. Adjust needle sizes as necessary to obtain correct gauge.

GAUGE: 24 sts and 30 rds of plain st st, or 28 rds of pattern = 4" (10cm)

FINISHED MEASUREMENTS:



WATCH GAUGE CAREFULLY TO OBTAIN CORRECT FINISHED MEASUREMENTS!

PULLOVER

BODY: Using MC and cir needle in US size 2 (2½mm), C O 234 - 242 - 252 - 268 - 280 sts. Join and work in a rd. Work K 1, P 1 ribbing for 2" (5cm) and inc on last rd of ribbing 32 - 36 - 38 - 38 - 42 sts evenly spaced = 266 - 278 - 290 - 306 - 322 sts. Change to cir needle in US size 3 (3mm) or 4 (3½mm). Place a marker at beg of rd and after 133 - 139 - 145 - 153 - 161 sts = side markers. Work 3 rds st st, then Main Pattern I, beg as shown on graph, stop at next side marker, and beg again as shown on graph in order to make pattern symmetrical on front and back of body. Work until body measures 13" (33cm) - 13¾" (35cm) - 14½" (37cm) - 15 5/8" (39cm) - 16 1/8" (41cm). Work 2 rds st st, then Pattern I, then Main Pattern II, then Pattern II, but when body measures 22" (56cm) - 22¾" (58cm) - 23 5/8" (60cm) - 24 3/8" (62cm) - 25 1/8" (64cm), beg front neck opening.

FRONT NECK OPENING: C OFF the 17 - 19 - 19 - 19 - 21 center sts of front for front neck opening. Work back and forth, Rs beg at neck opening. Cont to C OFF 3 - 3 - 4 - 5 - 5 sts at beg of next 2 Rs, then 3 sts at beg of next 2 Rs, then 2 sts at beg of next 4 - 4 - 4 - 4 - 6 Rs, then 1 st at beg of next 6 - 6 - 8 - 8 - 6 Rs, and when there are 4 Rs of Pattern II rem, beg back neck opening.

BACK NECK OPENING: C OFF the 39 - 41 - 45 - 47 - 51 center sts of back for neck opening. Work each side of the body separately, and cont to C OFF at back neck every other R, 2 sts 1 time. When Pattern II is complete, body should measure 25 1/8" (64cm) - 26" (66cm) - 26¾" (68cm) - 27½" (70cm) - 28 3/8" (72cm). Using CCI, K 1 R on RS, then K 1 R on WS. C OFF. Complete second side of body to match first side.

SLEEVES: Using MC and dp needles in US size 2 (2½mm), C O 44 - 46 - 48 - 50 - 52 sts. Join and work in a rd. Work K 1, P 1 ribbing for 2" (5cm) and inc on last rd of ribbing 23 - 23 - 25 - 25 - 25 sts evenly spaced = 67 - 69 - 73 - 75 - 77 sts on rd. Change to dp needles in US size 3 (3mm) or 4 (3½mm). Work 3 rds st st, then Main Pattern I, center st on graph = center st of sleeve. At the same time, beg to inc 1 st at beg and end of rd, always leaving 2 sts between inc sts, every fourth rd 28 - 29 - 30 times for sizes XS - S - M, and every fourth rd 27 - 29 times then every other rd 7 - 6 times for sizes L - XL = 123 - 127 - 133 - 143 - 147 sts on rd. When sleeve measures 10 5/8" (27cm) - 11 1/8" (29cm) - 12¼" (31cm) - 13" (33cm) - 13¾" (35cm), work 2 rds st st, then Pattern III, center st on graph = center st of sleeve. When Pattern III is complete, use CC2 to work 4 rds st st. Sleeve should now measure 17¼" (44cm) - 18 1/8" (46cm) - 18 7/8" (48cm) - 19 5/8" (50cm) - 20½" (52cm). P 5 rds for facing. C OFF.

FINISHING: Steam pieces lightly from WS. Sew seams with yarn. Measure upper edge of sleeves without stretching. Mark off this width on each side of the body, from the top down, for armholes. Sew 2 machine seams along each side and across the bottom of each armhole area = 4 sts in width. Cut between the pairs of machine seams. Sew each shoulder tog from RS through P R = K on WS. Sew each sleeve in from RS through first st inside machine seams on body, and through lower loops of first P rd of sleeve facing. Sew facing over cut edges on WS of body.

NECKBAND: Using CC2 and dp needles in US size 2 (2½mm), pick up 120 - 120 - 128 - 132 - 136 sts around neck opening starting at either shoulder. Pick up using method described on page 2. Join and work in a rd. Work K 1, P 1 ribbing for 1½" (4cm). P 1 rd = fold line, then work ribbing again for 1½" (4cm). C OFF in ribbing. Fold neckband at fold line and sew loosely to WS.

CAP

CAP: Using MC and dp needles in US size 2 (2½mm), C O 121 - 129 sts. Join and work in a rd. Work 10 rds st st, P 1 rd, then change to dp needles in US size 3 (3mm) or 4 (3½mm). Work 2 rds st st, then Cap Pattern, center st on graph = center front st of cap. When pattern is complete, use MC to work 2 rds st st, then work Main Pattern I until cap measures 8¼" (21cm) - 9" (23cm) from P rd, and on last rd dec 1 st.

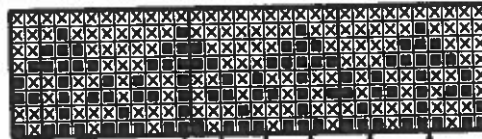
SHAPING: On next rd, K 2 tog over entire rd, then K 1 rd without dec, then K 2 tog over next rd, then K 1 rd without dec. Gather rem sts on a piece of

yarn and fasten off. Using CC1 and CC2, make 1 tassel, and braid 1 tie in each color. Fasten each tassel to end of tie, and fasten other end of ties to top of cap.

EAR FLAP: Place a piece of marker yarn at center front of cap. Using MC and dp needles in US size 3 (3mm), pick up 74 - 78 sts. Pick up through P rd, beg approx 4¼" (11cm) - 4¾" (12cm) from center front on 1 side of cap,

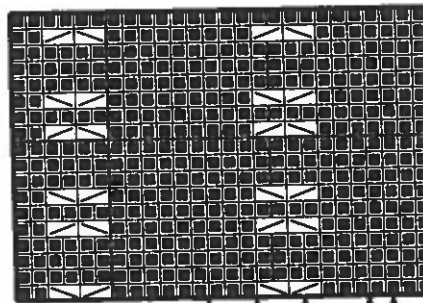
work around the back and up to approx 4¼" (11cm) - 4¾" (12cm) from center front on other side of cap. Work back and forth in plain st st, and dec 1 st, 1 st in from each end of R, every other R. Work until flap measures 1¾" (3½cm), P 1 R on RS, then work st st again for another 1¾" (3½mm) and inc as for earlier dec. C OFF. Fold flap at PR and sew loosely to WS of cap. Sew ends of flap closed.

PATTERN II



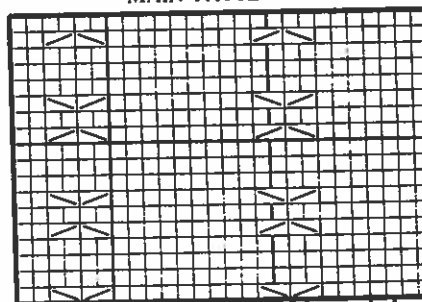
Center st XS S M L XL
Start here for size...

MAIN PATTERN II



XS S M L XL
Start here for size... Center st

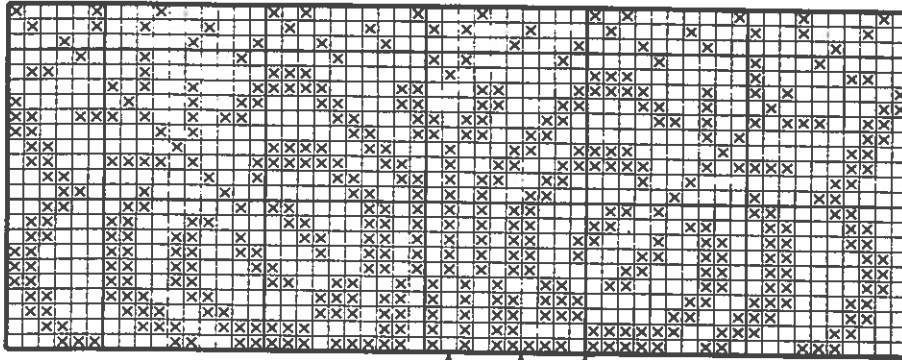
MAIN PATTERN I



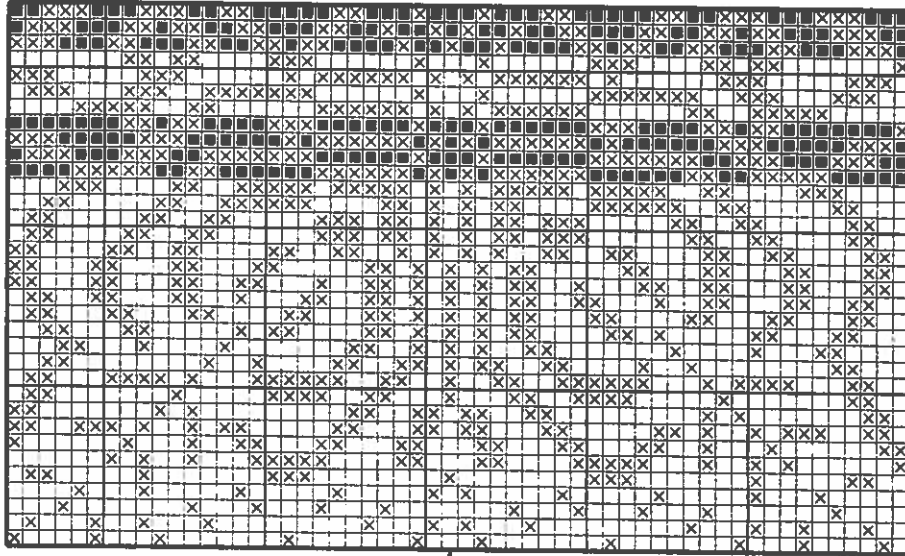
XS S M L XL
Start here for size... Center st

- = MC = deepest navy/deep teal
- ▣ = CC1 = off-white/off-white
- = CC2 = soft blue/deepest navy
- ◻ = Place 1 st on a holder in front of work, K 1, K st from holder
- ◻ = Place 1 st on a holder in back of work, K 1, K st from holder

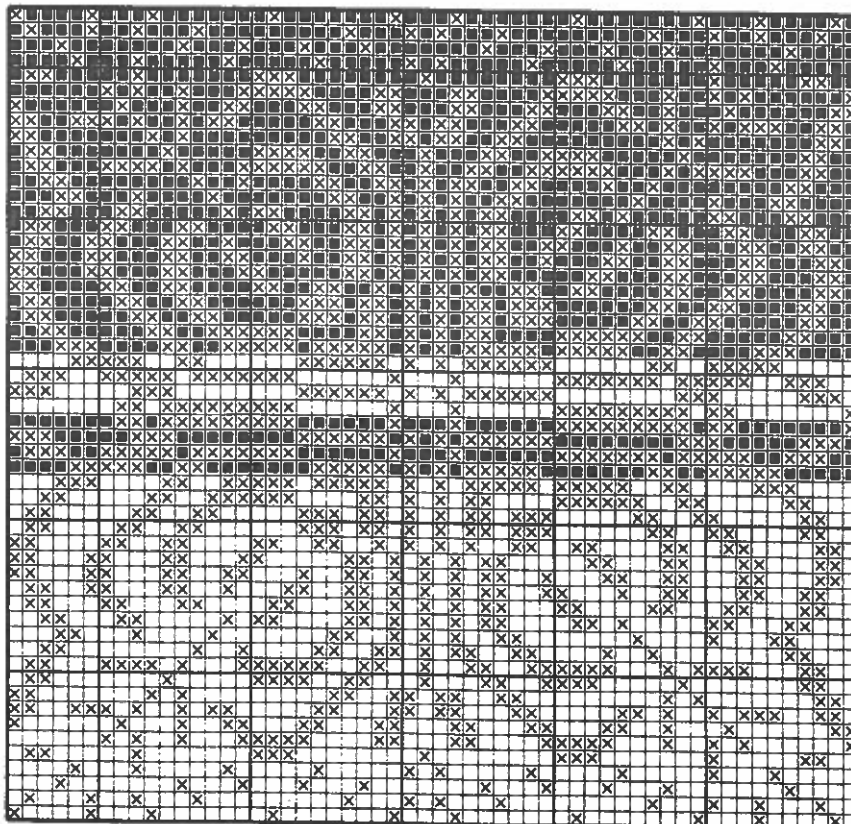
CAP PATTERN



Center st
Start here for size... Woman's Man's
PATTERN III



Center st
PATTERN I



Center st XS S M L XL
Start here for size...



WOMAN'S/MAN'S PULLOVER AND CAP

PULLOVER SIZES: XS S M L XL

PULLOVER MATERIALS: Heilo or Falk

Main Color:	650	700	750	800	850 gr
Contrast Color 1:	100	150	150	150	200 gr
Contrast Color 2:	50	50	50	100	100 gr

CAP SIZES: Woman Man

CAP MATERIALS: Heilo or Falk

Main Color:	100	100 gr
Contrast Colors 1-2:	50	50 gr or remnants

COLORWAYS:

Option	Main Color	Contrast Color
I	cherry red 4018	CC1 - off-white 0017 CC2 - deepest navy 5582
II	deepest navy 5582	CC1 - cherry red 4018 CC2 - off-white 0017

SUGGESTED NEEDLE SIZES:

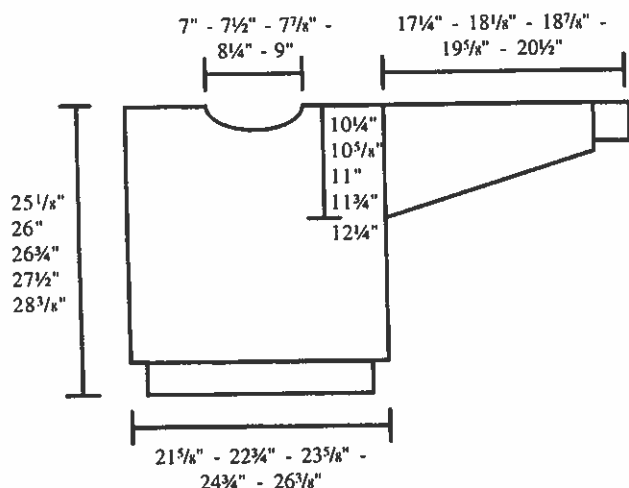
Cir and dp needles in US sizes 2 (2½mm) and 3 (3mm) or 4 (3½mm). Crochet hook in US size B/1 (2mm) for picking up sts. Adjust needle sizes as necessary to obtain correct gauge.

GAUGE: 24 sts and 30 rds of plain st st, or 28 rds of pattern = 4" (10cm)

ACCESSORIES:

Zipper and flag patch, sold with pattern instructions.

FINISHED MEASUREMENTS:



WATCH GAUGE CAREFULLY TO OBTAIN CORRECT FINISHED MEASUREMENTS!

PULLOVER WITH ZIPPER

BODY: Using MC and cir needle in US size 2 (2½mm), C O 256 - 268 - 280 - 292 - 312 sts. Join and work in a rd. Work K 1, P 1 ribbing for 1⅞" (3cm) and inc on last rd of ribbing 10 sts evenly spaced = 266 - 278 - 290 - 302 - 322 sts on rd. Change to cir needle in US size 3 (3mm) or 4 (3½mm). Still using MC, work st st until body measures 9⅞" (24cm) - 10¼" (26cm) - 11" (28cm) - 11¼" (30cm) - 12½" (32cm). Work Pattern I, then use CC1 to work st st for 4¾" (12cm). Work Pattern II, and on first rd, C OFF the 3 center sts of front for zipper opening. On next rd, C O 3 new sts over the C OFF sts, new sts are cutting sts. When Pattern II is complete, use MC to work st st until body measures 22" (56cm) - 22¾" (58cm) - 23⅝" (60cm) - 24⅞" (62cm) - 25⅞" (64cm), then beg front neck opening.

FRONT NECK OPENING: C OFF the 3 cutting sts at center front for neck opening. Work back and forth, Rs beg at neck opening. C OFF 7 - 8 - 8 - 8 - 9 sts at beg of first 2 Rs, then 3 - 3 - 4 - 5 - 5 sts at beg of next 2 Rs, then 3 sts at beg of next 2 Rs, then 2 sts at beg of next 4 - 4 - 4 - 4 - 6 Rs, then 1 st at beg of next 6 - 6 - 8 - 8 - 6 Rs. When body measures 24⅞" (62cm) - 25⅞" (64cm) - 26" (66cm) - 26¾" (68cm) - 27½" (70cm), beg back neck opening.

BACK NECK OPENING: C OFF the 39 - 41 - 45 - 47 - 51 center sts of back for neck opening. Work each side of the body separately, and cont to C OFF at back neck every other R, 2 sts 1 time. When body measures 25⅞" (64cm) - 26" (66cm) - 26¾" (68cm) - 27½" (70cm) - 28⅞" (72cm), use MC to K 1 R on RS, then K 1 R on WS. C OFF. Complete second side of body to match first side.

SLEEVES: Using MC and dp needles in US size 2 (2½mm), C O 54 - 56 - 60 - 62 - 64 sts. Join and work in a rd. Work K 1, P 1 ribbing for 1⅞" (3cm) and inc on last rd of ribbing 12 sts evenly spaced = 66 - 68 - 72 - 74 - 76 sts on rd. Change to dp needles in US size 3 (3mm) or 4 (3½mm). Work st st. At the same time, beg to inc 1 st at beg and end of rd, always leaving 2 sts between inc sts, every fourth rd 28 - 29 - 30 times for sizes XS - S - M, and every fourth rd 27 - 29 times then every other rd 7 - 6 times for sizes L - XL = 122 - 126 - 132 - 142 - 146 sts on rd. Work until sleeve measures 17¼" (44cm) - 18⅞" (46cm) - 18⅞" (48cm) - 19⅝" (50cm) - 20½" (52cm). P 5 rds for facing. C OFF.

FINISHING: Steam pieces lightly from WS. Sew seams with yarn. Measure upper edge of sleeves without stretching. Mark off this width on each side of the body, from the top down, for armholes. Sew 2 machine seams along each side and across the bottom of each armhole area = 4 sts in width, and along each side of the 3 cutting sts at center front. Cut between the pairs of machine seams. Sew each shoulder tog from RS through P R = K on WS. Sew each sleeve in from RS through first st inside machine seams on body, and through lower loops of first P rd of sleeve facing. Sew facing over cut edges on WS of body. Sew flag patch in center front as shown in color book.

NECKBAND: Using MC and cir needle in US size 2 (2½mm), pick up 12C - 120 - 128 - 132 - 136 sts around neck opening. Pick up using method described on page 2. Work back and forth. Work K 2, P 2 ribbing for 3¼" (7cm), then P 1 R on RS = fold line, then work ribbing again in this manner 5 Rs of MC, 2 Rs of CC2, 2 Rs of MC, 2 Rs of CC1, 8 Rs of MC. C OFF in ribbing. Fold neckband at fold line and sew loosely to WS.

ZIPPER PLACKET: Using MC and dp needles in US size 2 (2½mm) pick up sts along left or right side of zipper opening. Pick up using method described on page 2. Work 2 Rs st st, then P 1 R on RS, then work 4 Rs st st again. C OFF. Fold placket at P R and sew neatly over cut edge on WS of body. Work second side of opening to match first side. Sew in zipper.

PULLOVER WITH CREW NECK

BODY: C O and work as for pullover with zipper, but omit the C OFF and C O of sts at center front for zipper opening. When body measures 22" (56cm) - 22¾" (58cm) - 23⅝" (60cm) - 24⅞" (62cm) - 25⅞" (64cm), beg front neck opening.

FRONT NECK OPENING: C OFF the 17 - 19 - 19 - 19 - 21 center sts c

front for neck opening. Work back and forth and cont to COFF as for pullover with zipper.

BACK NECK OPENING: As for pullover with zipper.

SLEEVES: As for pullover with zipper.

FINISHING: As for pullover with zipper, but do not sew or cut at center front.

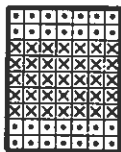
NECKBAND: As for pullover with zipper, but row starts be either shoulder. Use dp needles, and join and work in a rd.

CAP

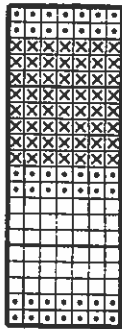
CAP: Using MC and dp needles in US size 2 (2½mm) C O 122 - 130 sts. Join and work in a rd. Work 2 rds K 1, P 1 ribbing, then 2 rds st st, then Cap Pattern. When pattern is complete, use MC to work 3 rds st st, P 1 rd, then work 5 more rds st st. Turn work with WS facing out. Change to dp needles in US size 3 (3mm) or 4 (3½mm). Work st st until cap measures 8¼" (21cm) - 9" (23cm) from P rd.

SHAPING: On next rd, K 2 tog over entire rd, then K 1 rd without dec, then K 2 tog over next rd, then K 1 rd without dec. Gather rem sts on a piece of yarn and fasten off. Using CC1, make a pom pom and fasten to top of cap.

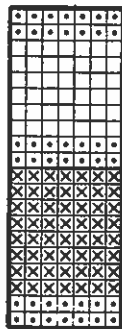
CAP PATTERN



PATTERN II



PATTERN I



- = MC = cherry red/deepest navy
- ⊗ = CC1 = off-white/cherry red
- ⊠ = CC2 = deepest navy/off-white

CHILD'S PULLOVER AND CAP

PULLOVER SIZES: 2 4 6 8 10 12 years

PULLOVER MATERIALS: Heilo or Falk

Main Color:	350	400	450	500	550	600 gr
Contrast Color 1:	50	100	100	100	100	100 gr
Contrast Color 2:	50	50	50	50	50	50 gr

CAP SIZES: 2/4 6/8 10/12 years

CAP MATERIALS: Heilo or Falk

Main Color:	50	50	100 gr
Contrast Color 1 and 2:	50	50	50 gr or remnants

COLORWAYS:

Option	Main Color	Contrast Color
I	cherry red 4018	CC1 - off-white 0017 CC2 - deepest navy 5582
II	deepest navy 5582	CC1 - cherry red 4018 CC2 - off-white 0017

SUGGESTED NEEDLE SIZES:

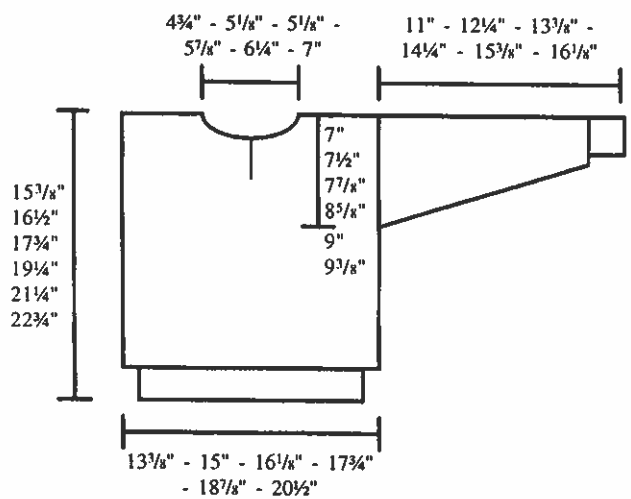
Cir and dp needles in US size 2 (2½mm) and 3 (3mm) or 4 (3½mm). Crochet hook in US size B/1 (2mm) for picking up sts. Adjust needles sizes as necessary to obtain correct gauge.

GAUGE: 24 sts and 30 rds of plain st st = 4" (10cm)

ACCESSORIES:

Zipper and flag patch, sold with pattern instructions.

FINISHED MEASUREMENTS:



WATCH GAUGE CAREFULLY TO OBTAIN CORRECT FINISHED MEASUREMENTS!

PULLOVER WITH CREW NECK

BODY: Using MC and cir needle in US size 2 (2½mm), C O 166 - 182 - 198 - 214 - 230 - 250 sts. Join and work in a rd. Work K 1, P 1 ribbing for 1" (2½cm). Change to cir needle in US size 3 (3mm) or 4 (3½mm). Work st st until body measures 7½" (19cm) - 8½" (22cm) - 9½" (25cm) - 8½" (22cm) - 10½" (27cm) - 12¼" (31cm). Work Pattern I, beg as shown on graph for each size, then use CC1 to work st st for 2¾" (6cm), then work Pattern II. Using MC again, work st st until body measures 13¾" (34cm) - 14½" (37cm) - 15¾" (40cm) - 16¾" (43cm) - 18¾" (48cm) - 20½" (52cm), then beg front neck opening.

FRONT NECK OPENING: C OFF of the 11 - 13 - 13 - 13 - 17 - 21 center sts of front for neck opening. Work back and forth, Rs beg at neck opening. Cont to C OFF, 3 sts at beg of next 2 Rs, then 2 sts at beg of next 4 Rs, then 1 st at beg of next 4 - 4 - 4 - 8 - 8 - 8 Rs. When body measures 14½" (37cm) - 15¾" (40cm) - 16⅞" (43cm) - 18½" (47cm) - 20½" (52cm) - 22" (56cm), beg back neck opening.

BACK NECK OPENING: C OFF the 19 - 21 - 21 - 25 - 29 - 33 center sts of back for neck opening. Work each side of the body separately, and cont to C OFF at back neck every other R, 4 sts 1 time, then 1 st 1 time. P 1 R on RS, then C OFF. Complete second side of body to match first side.

SLEEVES: Using MC and dp needles in US size 2 (2½mm), C O 42 - 44 - 46 - 50 - 50 - 54 sts. Join and work in a rd. Work K 1, P 1 ribbing for 1" (2½cm), and inc on last rd of ribbing 12 sts evenly spaced = 54 - 56 - 58 - 62 - 62 - 66 sts on rd. Change to dp needles in US size 3 (3mm) or 4 (3½mm). Work st st and at the same time, inc 1 st at beg and end of every fourth rd, always leaving 2 sts between inc sts, 17 - 19 - 20 - 22 - 24 - 25 times = 88 - 94 - 98 - 106 - 110 - 116 sts on rd. Work until sleeve measures 11" (28cm) - 12¼" (31cm) - 13⅞" (34cm) - 14½" (37cm) - 15⅞" (39cm) - 16⅞" (41cm). P 5 rds for facing. C OFF.

FINISHING: Steam pieces lightly from WS. Sew seams with yarn. Measure upper edge of sleeves without stretching. Mark off this width on each side of the body, from the top down, for armholes. Sew 2 machine seams along each side and across the bottom of each armhole area = 4 sts in width. Cut between the pairs of machine seams. Sew each shoulder tog from RS through P R. Sew each sleeve in from RS through first st inside machine seams on body, and through lower loops of first P rd of sleeve facing. Sew facing over cut edges on WS of body. Sew flag patch in center front as shown in color book.

NECKBAND: Using MC and dp needles in US size 2 (2½mm), pick up 96 - 102 - 102 - 108 - 108 - 114 sts around neck opening; starting at either shoulder. Pick up using method described on page 2. Join and work in a rd. Work K 1, P 1 ribbing for 1⅞" (3½cm). P 1 rd, then work ribbing again in this manner: 2 rds in MC, 2 rds in CC2, 2 rds in MC, 2 rds in CC1, 2 rds in MC. C OFF in ribbing. Fold neckband at P rd and sew neatly to WS.

PULLOVER WITH ZIPPER

BODY: C O and work as for pullover with crew neck until you reach Pattern II. On first rd of Pattern II, C OFF the 3 center sts of front for zipper opening. On following rd, C O 3 new sts over C OFF sts, new sts are cutting sts. When Pattern II is complete, use MC to work st st. Work until body measures 13⅞" (34cm) - 14½" (37cm) - 15¾" (40cm) - 16⅞" (43cm) - 18⅞" (48cm) - 20½" (52cm), then beg front neck opening.

FRONT NECK OPENING: C OFF the 3 cutting sts at center front for neck opening. Work back and forth, Rs beg at neck opening. C OFF 4 - 5 - 5 - 5 - 7 - 9 sts at beg of first 2 Rs, then cont to C OFF as for pullover with crew neck.

BACK NECK OPENING: As for pullover with crew neck.

SLEEVES: As for pullover with crew neck.

FINISHING: As for pullover with crew neck, but also sew 2 machine seams along each side of the 3 cutting sts at center front, and cut between the pairs of seams. Sew flag patch in center front as shown in color book.

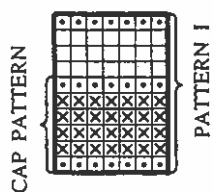
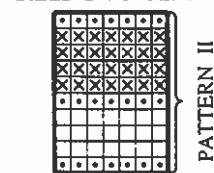
NECKBAND: As for pullover with crew neck, but work back and forth, row starting in front.

ZIPPER PLACKET: Using MC and dp needles in US size 2 (2½mm), pick up 24 sts per 4" (10cm) along left or right side of zipper opening at center front, including neckband. Pick up using method described on page 2. Work 2 Rs st st. P 1 R on RS, then work 4 more Rs st st. C OFF. Fold placket at P R and sew neatly over cut edge on WS of body. Work second side of opening as for first side. Sew in zipper.

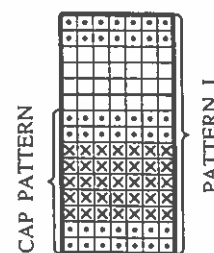
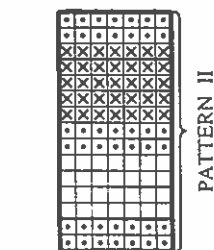
CAP

CAP: Using MC and dp needles in US size 2 (2½mm) C O 96 - 104 - 112 sts. Join and work in a rd. Work 2 rds K 1, P 1 ribbing, then 2 rds st st, then Cap Pattern. When pattern is complete use MC to work 3 rds st st, then P 1 rd, then work 5 more rds st st. Turn work with WS facing out. Change to dp needles in US size 3 (3mm) or 4 (3½mm). Work st st until cap measures approx 5⅞" (15cm) - 6¼" (16cm) - 7" (18cm) from P rd. On next rd, K 2 tog over entire rd. Gather rem sts on a piece of yarn and fasten off. Using CC1, make a pom pom and fasten to top of cap.

SIZES 2-4-6 YEARS



SIZES 8-10-12 YEARS



- = MC = cherry red/deepest navy
- ⊗ = CC1 = off-white/cherry red
- ◻ = CC2 = deepest navy/off-white



TOR IS STRONG AND HAS A HOT TEMPER. ALWAYS WILLING TO FIGHT WITH TROLLS IF NECESSARY. HIS HAMMER, MJØLNER, IS THE WORLD'S MOST DANGEROUS WEAPON BOTH IN HEAVEN AND ON EARTH. HE ALWAYS STRIKES HIS GOAL, AND THE HAMMER ALWAYS RETURNS BACK TO HIS HAND.





YOU CAN
ASK
NJORD
ABOUT
GOOD
WEATHER
AND
FISHING
LUCK, AND
FOR
RICHNESS
OF ALL
KIND.



SWEATER FOR
CHILDREN



FRIGG IS
THE MOST
IMPORTANT
OF THE
GODDESSES.
SHE IS
MARRIED
TO ODIN
AND IS THE
MOTHER OF
BALDER.



SWEATER FOR
ADULTS

