

NR 8501

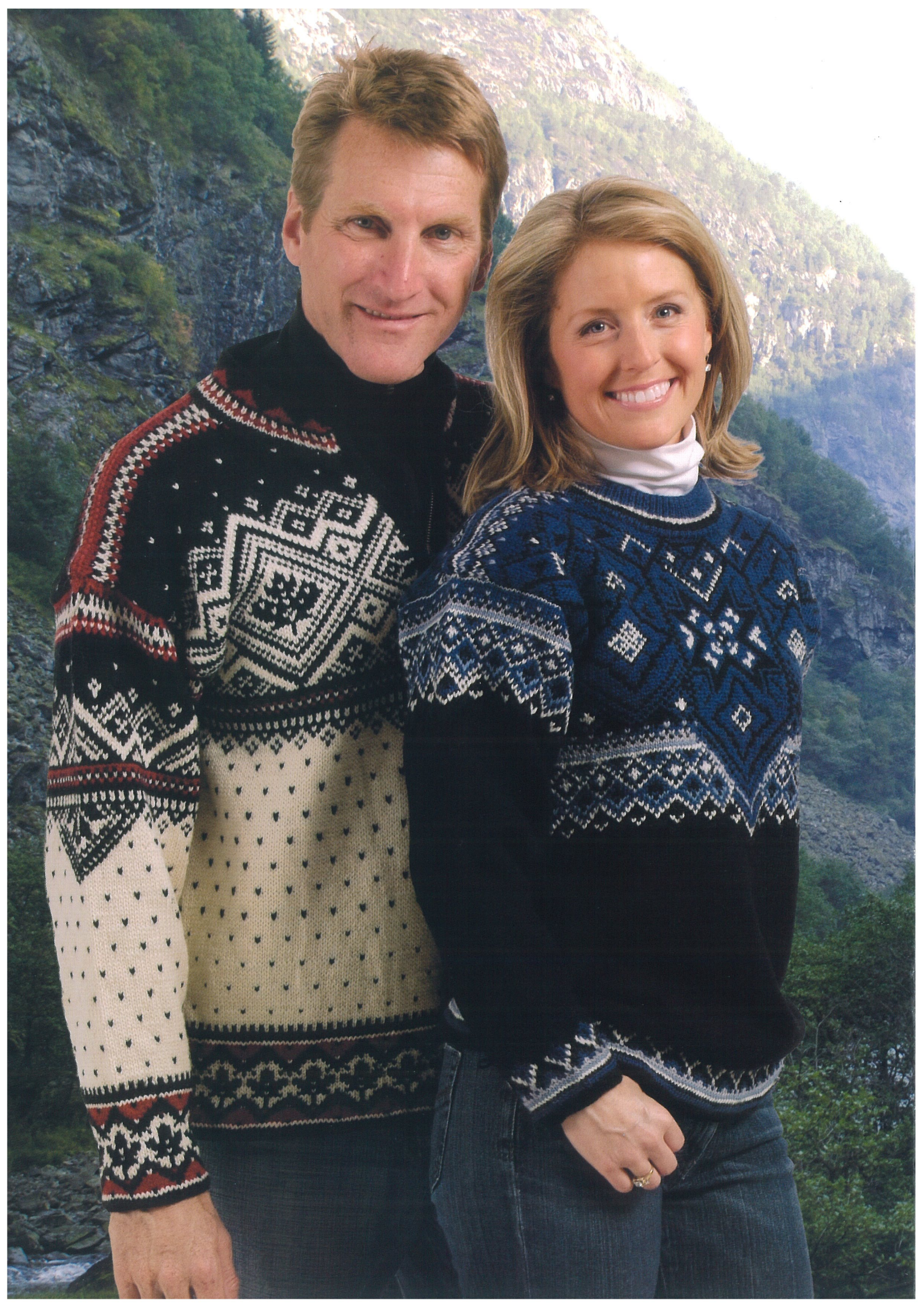
Dale of Norway

Commemorative Collection

New Designs for Men & Women

Heilo
Falk





Dale of Norway

Commemorative Collection

The 2010 Olympic Winter Games are returning to North America. Help us celebrate athletic excellence & the Olympic spirit with the five designs featured here.

The patterns in this book are being offered to hand knitters for the first time; these sweaters were originally created for the Canadian Alpine Ski Team, from Lake Louise 2001, to Notre Dame 2002, Mt. Robson 2003, Le Massif 2004, and to Whistler 2005. The athletes of the Canadian Alpine Ski Team wore these sweaters at press conferences, interviews & special events.

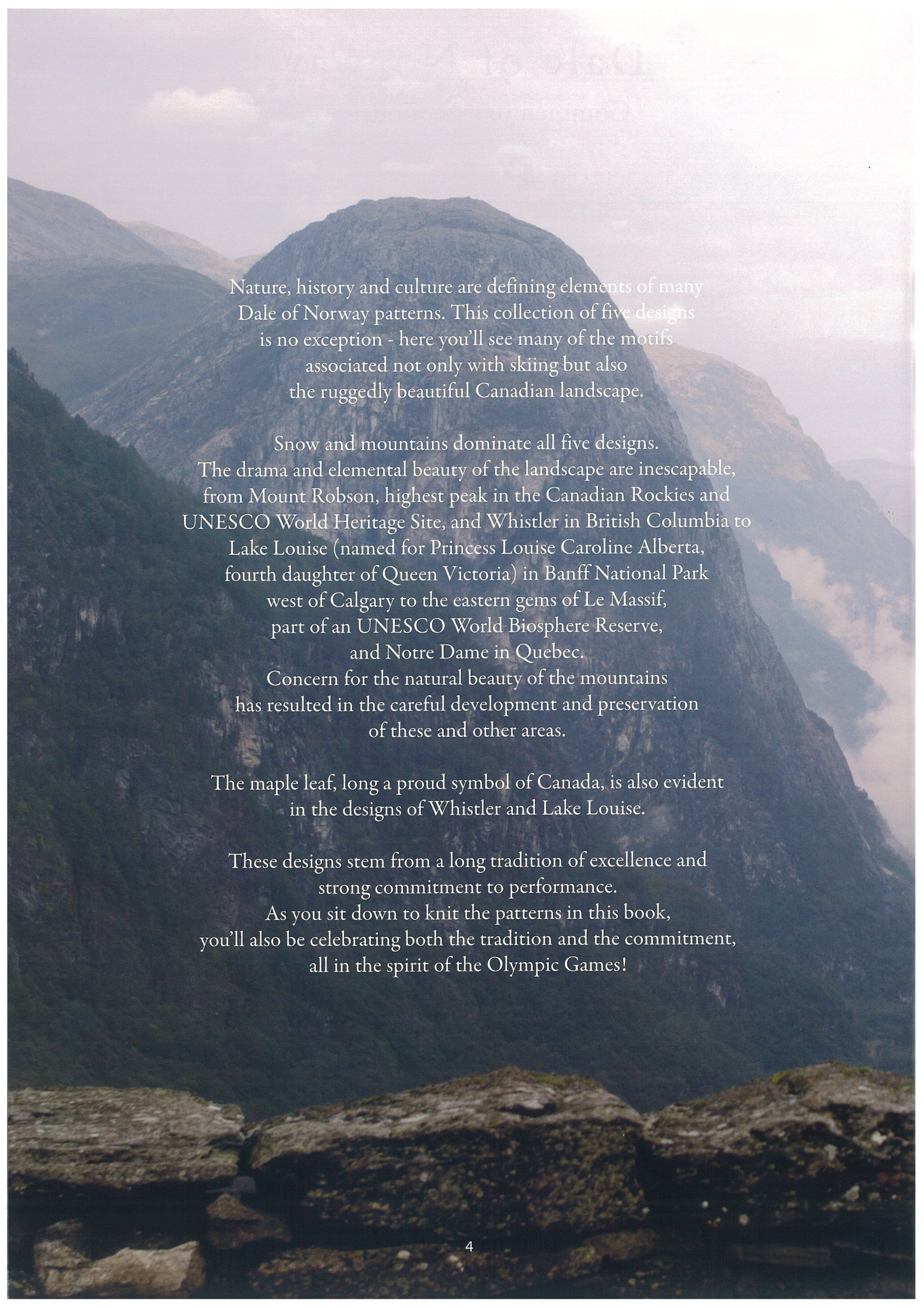
Make these classic Dale of Norway designs in either Heilo or Falk. You can find these yarns at your local authorized Dale yarn shop.

Front Cover:

Whistler 2005, Colorway B
Heilo or Falk, XS - XXL

Page 2:

Left, Lake Louise 2001, Colorway C
& right, Notre Dame 2002, Colorway F
Both Heilo or Falk, XS - XXL



Nature, history and culture are defining elements of many Dale of Norway patterns. This collection of five designs is no exception - here you'll see many of the motifs associated not only with skiing but also the ruggedly beautiful Canadian landscape.

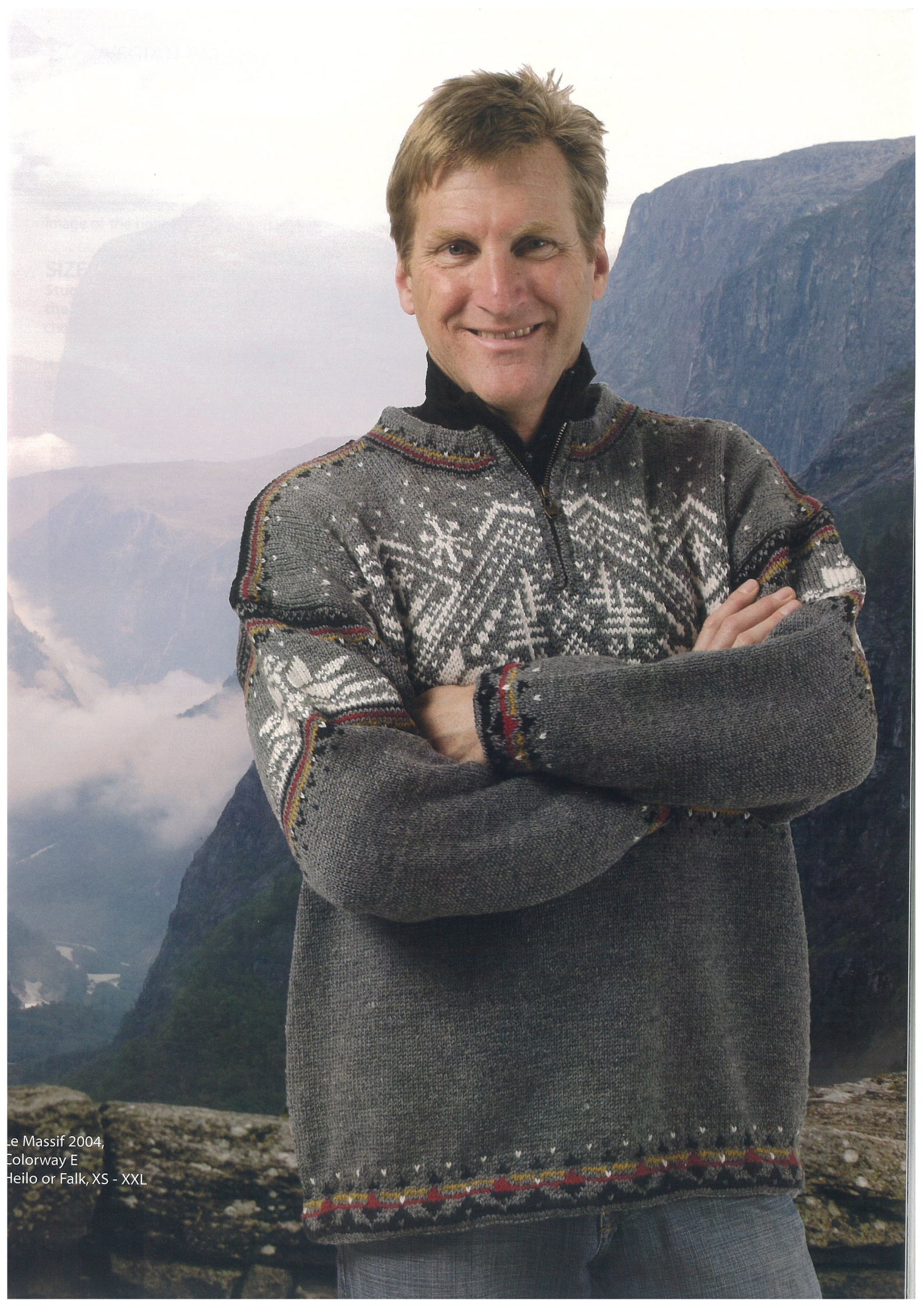
Snow and mountains dominate all five designs. The drama and elemental beauty of the landscape are inescapable, from Mount Robson, highest peak in the Canadian Rockies and UNESCO World Heritage Site, and Whistler in British Columbia to Lake Louise (named for Princess Louise Caroline Alberta, fourth daughter of Queen Victoria) in Banff National Park west of Calgary to the eastern gems of Le Massif, part of an UNESCO World Biosphere Reserve, and Notre Dame in Quebec.

Concern for the natural beauty of the mountains has resulted in the careful development and preservation of these and other areas.

The maple leaf, long a proud symbol of Canada, is also evident in the designs of Whistler and Lake Louise.

These designs stem from a long tradition of excellence and strong commitment to performance.

As you sit down to knit the patterns in this book, you'll also be celebrating both the tradition and the commitment, all in the spirit of the Olympic Games!



SIZE
S
M
L
XL
XXL

Le Massif 2004,
Colorway E
Heilo or Falk, XS - XXL



Notre Dame 2002
 Pullover, Cap & Headband
 Heilo or Falk, XS - XXL

Colorways, clockwise from upper left:
 A, off white/charcoal heather;
 B, cherry red/black; and
 F, black/norwegian blue

NORWEGIAN PATTERNS

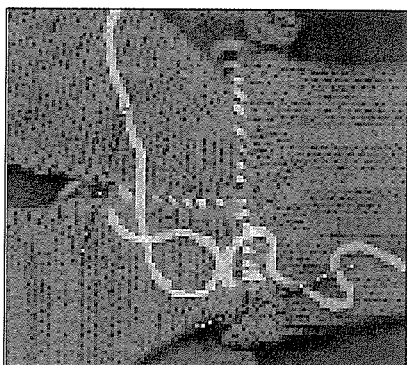
Most Norwegian knitting designs, especially those involving color work, are symmetrical in nature along central stitches of both front and back. Thus, due to the complexity of Norwegian patterning, an even number of repeats often does not occur as in Fair Isle knitting; the knitter is instructed to place markers at specified points in the work, marking the patterns' side edges. It is important to take care when reading instructions and charts to keep the designs centered on both the garment's front and back. To work from a Norwegian pattern graph begin at the first marker (left side of front for pullovers or right front opening for cardigans) with the stitch marked "Beg here" on the graph and work to the next marker (right side of front/back for pullovers and cardigans). Work the back of the body, beginning again as instructed on the graph. For pullovers, complete the round or for cardigans, work to the next marker and begin the left front so that the left front is a mirror image of the right front. The pattern will be centered on both front and back of the garment, matching at the shoulders.

SIZES & GAUGE

Study the finished measurements listed in the pattern; the smallest size is listed first on both the graphs and in the pattern instructions. Many of the designs are generously sized, especially the unisex sweaters, so it is important to choose the size that will fit properly.

It is important to maintain the correct gauge while knitting because the finished measurements and shape of your garment are completely dependent upon gauge. If you knit looser than the gauge given in the pattern instructions, try needles one size smaller. If you knit tighter, try needles one size larger.

SLEEVE & SHOULDER SEAMS



PURE NEW WOOL

ABBREVIATIONS

approx = approximately	MC = main color
beg = begin(ning)	mm = millimeter(s)
C O = cast on	p = purl
C OFF = cast off	p-wise = purlwise, as if to purl
CC = contrast color	pssO = pass slipped stitch(es) over
cn = cable needle	p2tog = purl 2 stitches together
cir = circular	rem = remain(ing)(der)
cm = centimeter(s)	rep = repeat(s)(ing)
cont = continu(e)(ing)	rnd(s) = round(s)
dec = decreas(e/s)(ing)	RS = right side(s)
dp = double pointed	st(s) = stitch(es)
g st = garter stitch	St st = stockinette stitch
gr = gram(s)	tbl = through the back of the loop(s)
inc = increas(e/s)(ing)	tog = together
k = knit	WS = wrong side(s)
k-wise = knitwise, as if to knit	yd(s) = yard(s)
k2tog = knit 2 stitches together	yo = yarn over needle to make 1 stitch
m = meter(s)	

FALK

100% Pure Superwash Sport Weight Wool. *Care instructions:* Machine wash (delicate cycle) or hand wash in cold water using mild/neutral detergent. Dry flat; do not put in dryer. May be dry cleaned.

HEILO

100% Pure New Classic Norwegian Sport Weight Wool. *Care instructions:* Hand wash in cold water using mild/neutral detergent. Dry flat; do not put in dryer. May be dry cleaned.



Do not
bleach



Gentle
cycle spin



Steam lightly with
steam iron, if needed



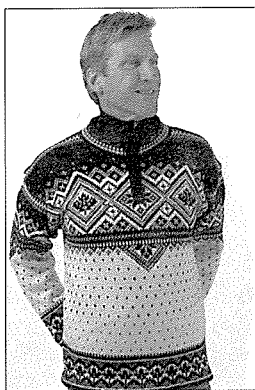
Dry Clean with perchlorethylene
using normal methods

The patterns in this book have been developed and tested by our design division. Every effort has been made to make the knitting directions in this book as accurate as possible. However, we cannot be responsible for variations due to individual knitters, human error or typographical mistakes.

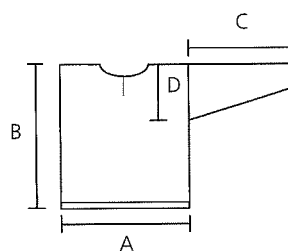
Copyright 2008, Dale of Norway, Inc. First edition. All rights reserved. No portion of this book may be copied, leased, resold or otherwise distributed without the written permission of Dale of Norway, Inc. For further information write: Dale of Norway, 4750 Shelburne Road, Shelburne, VT 05482.

8501-1 LAKE LOUISE 2001

PULLOVER, CAP & HEADBAND
- DALE DESIGN



FINISHED MEASUREMENTS:



- A** = Chest Width: 35⁷/₈" (39³/₄" , 43⁵/₈" , 47⁵/₈" , 51¹/₂" , 55⁷/₈")/
91cm (101cm, 111cm, 121cm, 131cm, 142cm)
- B** = Body Length: 25⁵/₈" (26³/₈" , 27¹/₈" , 28" , 28³/₄" , 29¹/₂")/
65cm (67cm, 69cm, 71cm, 73cm, 75cm)
- C** = Sleeve Length: 18¹/₂" (19¹/₄" , 19³/₄" , 20¹/₈" , 20¹/₂" , 20⁷/₈")/
47cm (49cm, 50cm, 51cm, 52cm, 53cm)
- D** = Armhole Depth: 9" (9¹/₂" , 9⁷/₈" , 10¹/₄" , 10⁵/₈" , 11")/
23cm (24cm, 25cm, 26cm, 27cm, 28cm)

Watch gauge carefully to obtain the correct finished measurements!

PULLOVER

BODY: With smallest cir needle and CC1, C O 222/242/266/290/314/338 sts. Join and, working in the rnd, mark beg of rnd and work 7⁷/₈" (2cm) of k1, p1 rib. Next rnd, work first 2 sts, yo, k2tog, work rib to last 4 sts, k2tog, yo, then work rem 2 sts. Cont rib until body measures 1¹/₈" (3cm) from bottom edge. Work 3⁷/₈" (1cm) of St st, then p 1 rnd for fold line. Change to middle size cir needle and place side markers at the beg of rnd and after 111/121/133/145/157/169 sts. Work Pattern I, beg each size at right-hand side of graph as shown and work to marker, then begin again at right-hand side of graph as before and work to end of rnd. Beg Main Pattern in same manner and cont 12-rnd rep until body measures approx 11³/₄" (12¹/₄" , 13" , 13³/₄" , 14¹/₂" , 15³/₈")/29cm (31cm, 33cm, 35cm, 37cm, 39cm) from fold line, ending as shown on graph. Change to largest size cir needle. Beg Pattern II, beg each size as shown and work as before, working through rnd 46 (**Note:** Work rnds 1, 2, 4-8 and 10-12 with MC only, then add pattern at center front in CC1 using Duplicate St embroidery when body is complete).

PLACKET OPENING: Next rnd, work first 53/58/64/70/76/82 sts as set, C OFF the next 5 sts for placket opening, then work to end of rnd (217/237/261/285/309/333 sts). Next rnd, C O 3 new sts over C OFF sts of previous rnd (these are cutting sts; work in ground color throughout and exclude from st counts). Cont working through rnd 79.

FRONT NECK OPENING: Next rnd, work first 49/54/59/65/70/76 sts as set, C OFF the next 11/11/13/13/15/15 sts for front neck opening (the 3 cutting sts, plus 4/4/5/5/6/6 sts on either side), then work to end of rnd (209/229/251/275/297/321 sts). Cut yarns and slip left front shoulder sts from left needle to right needle. Reattach yarns and, working back and forth over entire body, beg rows at front neck edges. Cont pattern and C OFF 3 sts at the beg of first 4 rows, 2 sts at the beg of next 6 rows, then dec 1 st at the beg and end of every other row 4 times (177/197/219/243/265/289 sts).

BACK NECK OPENING: Work front sts and first 39/44/49/55/60/66 sts of back as set, C OFF the next 33/33/35/35/37/37 sts for back neck opening, then work to end of row. Working each side of body separately, cont pattern and C OFF every other row at back neck edge, 2 sts 3 times (66/76/86/98/108/120 sts). Complete patterns without further shaping. P 1 row on RS (or k 1 row on WS), then C OFF. Complete other side of body to match, placing back neck shaping on opposite side.

SLEEVES: With smallest dp needles and CC1, C O 50/50/54/54/58/58 sts. Join and, working in the rnd, mark beg of rnd and

MATERIALS: Heilo or Falk

SIZES: XS S M L XL XXL

PULLOVER:

Main Color:	500	550	600	650	700	750 gr
Contrast Color 1:	300	350	400	450	500	550 gr
Contrast Color 2:	50	50	50	100	100	100 gr

CAP:

Main Color:	100 gr for each size
Contrast Color 1:	50 gr or remnants for each size
Contrast Color 2:	50 gr for each size

HEADBAND:

Main Color:	50 gr for each size
Contrast Color 1:	50 gr or remnants for each size
Contrast Color 2:	50 gr for each size

COLORWAYS:

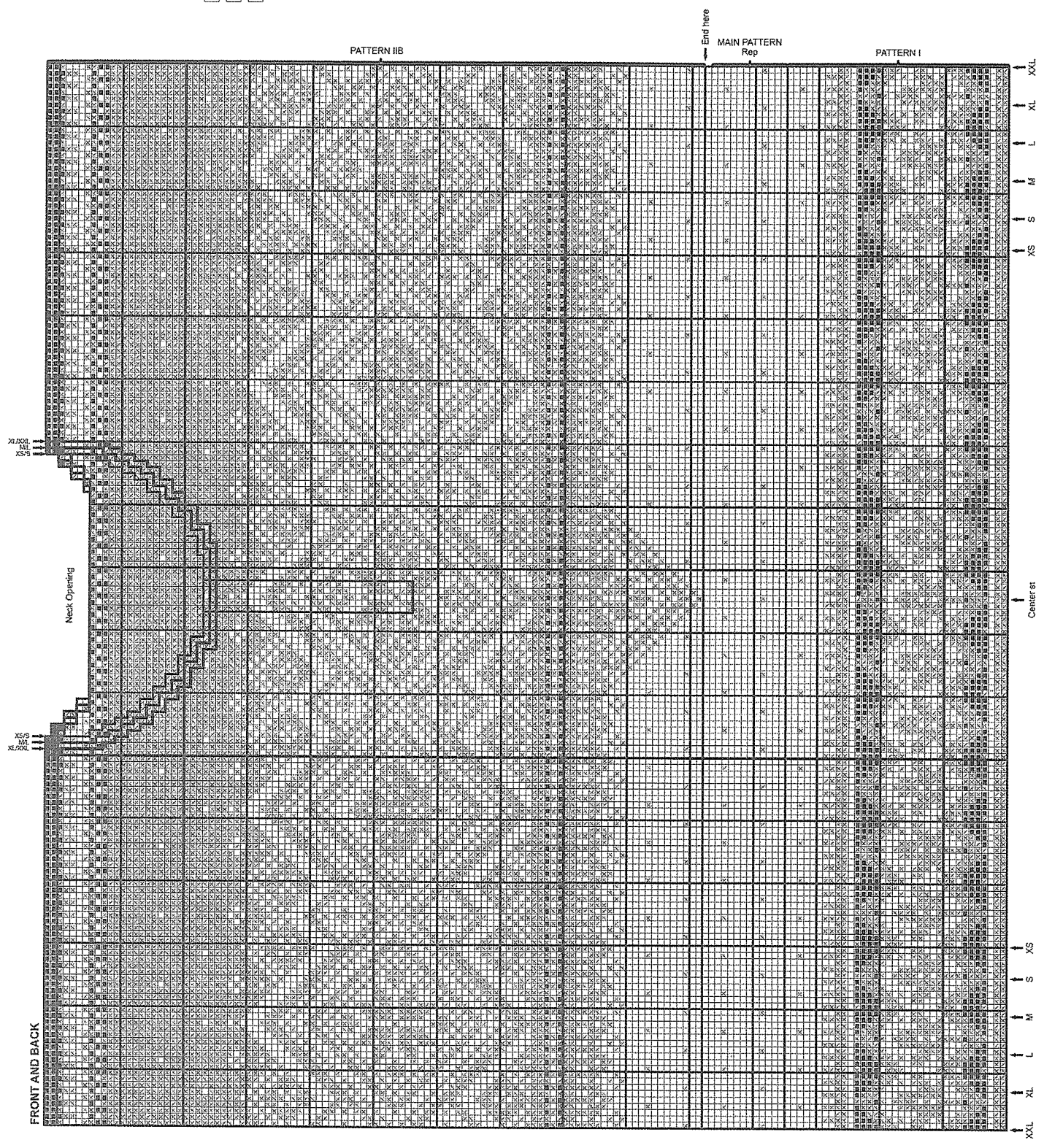
Option	Main Color	Contrast Color
A	off white 0017	CC1 - norwegian blue 5744 CC2 - navy 5563
C	natural 0020	CC1 - black 0090 CC2 - barn red 4137

SUGGESTED NEEDLE SIZES: Cir and dp needles in sizes 2.5mm and 3mm or 3.5mm, crochet hook in size 2mm, blunt tapestry needle and st markers. **Note:** US and metric needle sizes often do not match exactly and size equivalencies have changed. The original version of this pattern was written to use metric size needles; if in doubt as to whether a given US needle size is the same as a metric size, use the metric size needle. As always, please take the time to check your gauge carefully and change needle sizes as needed to obtain the correct gauge.

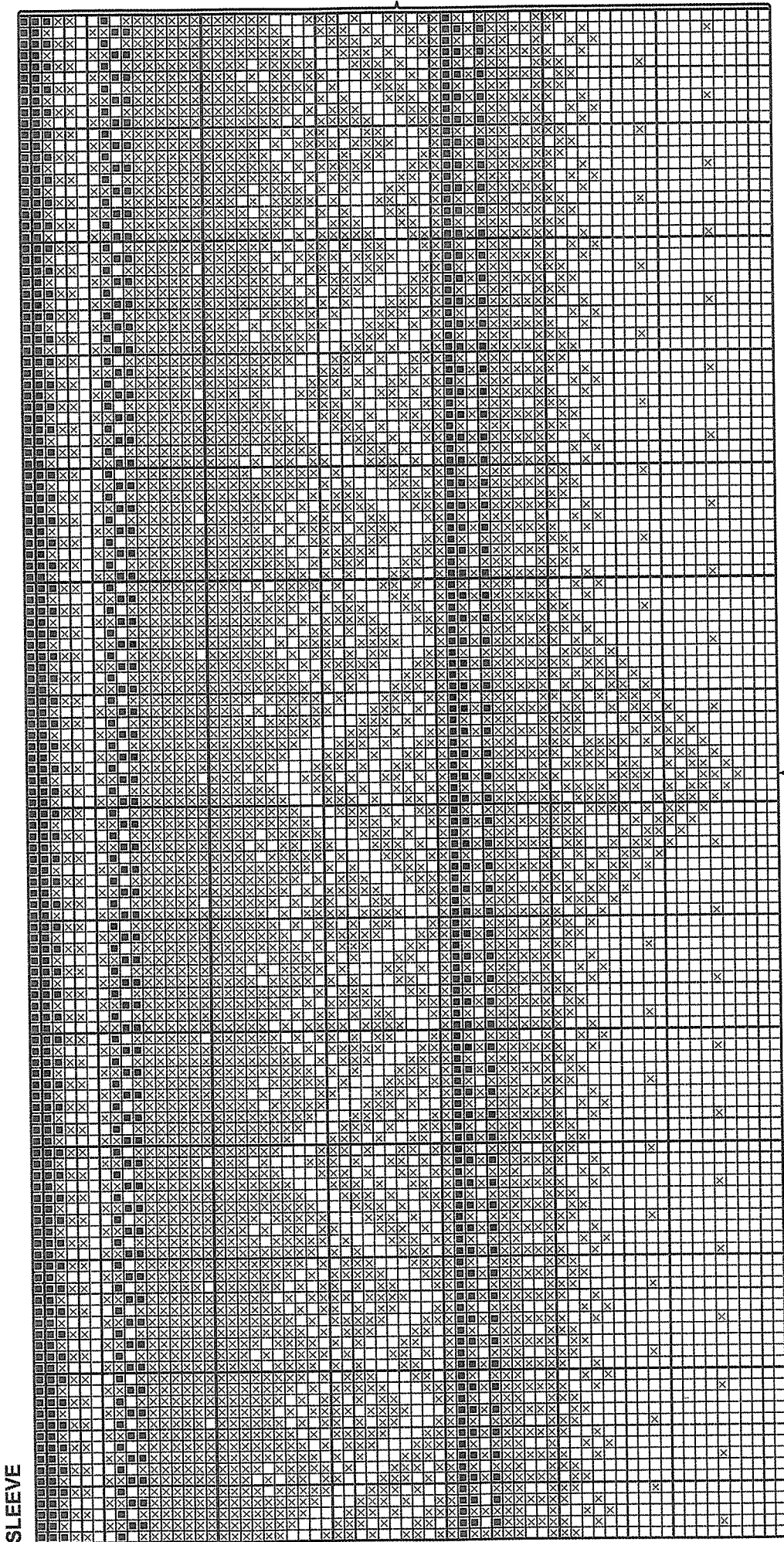
GAUGE: 24 sts and 28 rnds over color work pattern using larger needles = 4" (10cm) x 4" (10cm).

ACCESSORIES: Pullover, 6¹/₄" (16cm) long zipper and shock cord & stopper.

- ☐ = MC = off white 0017/natural 0020
- ☒ = CC1 = norwegian blue 5744/black 0090
- = CC2 = navy 5563/barn red 4137



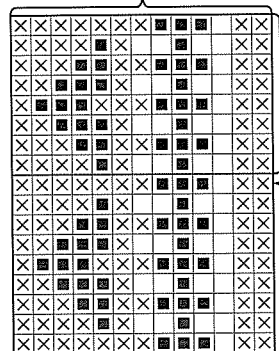
PATTERN III



Center st

- = MC = off white 0017/natural 0020
- ⊗ = CC1 = norwegian blue 5744/black 0090
- = CC2 = navy 5663/barn red 4137

PATTERN IV



Center back

Rep

work 1 1/8" (3cm) of k1, p1 rib. K 3 rnds, then p 1 rnd for fold line. Change to middle size dp needles, then k 1 rnd and inc 5 sts evenly spaced across rnd (55/55/59/59/63/63 sts). Work Pattern I, placing center st of graph at center of sleeve. Beg Main Pattern, placing center st of graph at center of sleeve. AT THE SAME TIME, inc 1 st at the beg and end of every fourth rnd 10/10/12/10/12/8 times, then every third rnd 20/22/20/24/22/28 times, leaving 2 sts between inc sts and working inc sts into pattern. In the meantime, when sleeve measures approx 9 1/4" (10", 10 5/8", 11", 11 3/8", 11 3/4") / 23.5cm (25.5cm, 27cm, 28cm, 29cm, 30cm) from fold line, end as shown on graph. Work Pattern III, placing center st of graph at center of sleeve, and cont rem inc as set (115/119/123/127/131/135 sts). P 5 rnds with CC2, then C OFF loosely. Make second sleeve to match.

FINISHING: Lay body and sleeves out to finished measurements and steam lightly; do not steam ribs. Fold lower edges of body and sleeves to inside along fold lines and sew loosely to WS, leaving an opening at lower right side of body to insert shock cord. With blunt tapestry needle threaded with appropriate colors, work pattern at center of front, back and sleeves in Duplicate St embroidery. Lay sleeves flat and measure width at top of sleeves below facings. Mark this width on each side of body from shoulders down for armholes. Sew 2 machine seams, 2 sts out from where side markers were placed and across bottom of the 4 sts for armhole openings, and along both sides of placket opening. Cut between the pairs of machine stitching, being careful not to cut stitching at bottom of armholes. Sew front and back tog at shoulders as shown on page 1.

NECKBAND: With smallest cir needle, CC1 and with RS facing, pick up 12 sts per 2" (5cm) along neck edge using a crochet hook 1/2-metric size smaller than needles to pick up an odd number of sts k-wise. Working back and forth, beg with a WS row. Beg with row 2 and work Neckband Pattern, placing center back of pattern at center back of neck. K 1 row on WS for fold line, then work 3 rows of St st. Beg k1, p1 rib and work until neckband measures approx 1 3/8" (4cm) from fold line. C OFF loosely in rib.

PLACKETS: With smaller dp or cir needles, CC1 and with RS facing, pick up sts along one side of placket opening, 1 st in on body side from machine seams, and end of neckband to fold line in same manner as neckband. Working back and forth, beg with a WS row and work 3 rows of St st. P 1 row on RS for fold line. Work 3 rows of St st, then C OFF loosely. Work placket along other side of placket opening to match. Fold plackets to inside along fold lines, covering cut edges, then sew neatly to WS. Neatly sew ends of placket closed, and lower ends to C OFF edge at beg of placket opening.

ZIPPER: Pin zipper into placket opening, placing top of zipper just below neckband fold line, and with edges of plackets meeting at center of zipper. Neatly sew zipper to body along placket pickup rows. Thread shock cord through stopper, then through casing at bottom of body, beg both ends at left side. Securely sew ends of cord tog. Slip cord under casing, then sew rem opening closed. Fold neckband to inside along fold line and sew loosely to WS. Sew ends of neckband to back of zipper tape, making sure zipper will slide past edge of neckband. Pin sleeves into armholes, placing center sts of sleeves at shoulder seams, then neatly sew sleeves to body as shown on page 1. On inside, turn facings toward body, covering cut edges, then loosely sew facings to WS.

HEADBAND
SIZES: XS/S/M L/XL/XXL

With smaller cir needle and CC1, C O 120/132 sts. Join and, working in the rnd, mark beg of rnd and beg rnds at center back. Work 2" (5cm) of St st, then p 1 rnd for fold line. Change to largest size cir needle. Work Headband Pattern, and inc 1 st on first rnd (121/133 sts). P 1 rnd for fold line and dec 1 st (120/132 sts). Change to smallest cir needle. Work 2" (5cm) of St st, then C OFF loosely. Fold edges to inside along fold lines, then loosely sew C O and C OFF edges tog.

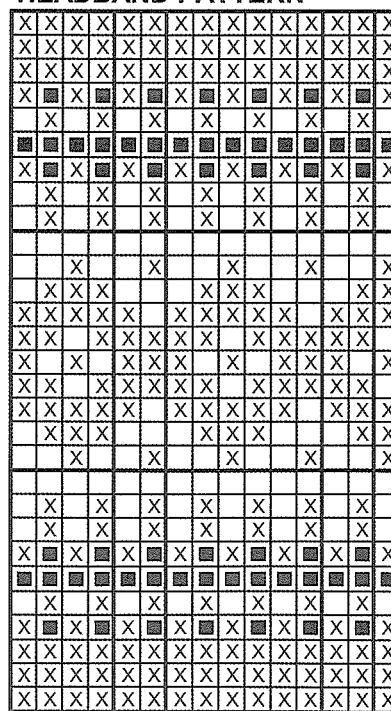
CAP
SIZES: XS/S/M L/XL/XXL

With smaller cir needle and CC2, C O 120/132 sts. Join and, working in the rnd, mark beg of rnd and beg rnds at center back. Work 9 rnds of k1, p1 rib. K 2 rnds, then p 1 rnd for fold line and inc 1 st at end of rnd (121/133 sts). Change to largest cir needle. Work Cap Pattern, beg each size as shown on graph and work first 49/55 sts, work next 23 sts for center front, then beg to right of center sts and work back toward right-hand side of graph; **Note:** Work rnd 18 with CC2 only, then add center front pattern using Duplicate St embroidery with appropriate colors when cap is complete. Dec 1 st at end of last rnd (120/132 sts); cap should measure approx 5 7/8" (15cm) from fold line. Change to middle size cir needle, then k 2 rnds with CC1.

SHAPING: Change to middle size dp needles. Next rnd, * k 8/9 sts, k2tog; rep from * to end of rnd (108/120 sts). K 1 rnd without dec. Next rnd, * k 7/8 sts, k2tog; rep from * to end of rnd (96/108 sts). K 1 rnd without dec. Cont dec next rnd, then every other rnd 5/6 times more, with 1 less st between dec sts each time, ending with a dec rnd. Gather rem 24 sts on a piece of yarn and fasten securely.

FINISHING: Thread blunt tapestry needle with appropriate colors and work Duplicate St embroidery on rnd 18. Fold lower edge of cap to inside along fold line and sew loosely to WS. Make 2 tassels with CC1, each approx 2 3/4" (7cm) long. Make a twisted cord with CC1 approx 5 1/8" (5 1/2") / 13cm (14cm) long. Securely attach a tassel to each end of cord, then attach center of cord to top of cap.

HEADBAND PATTERN

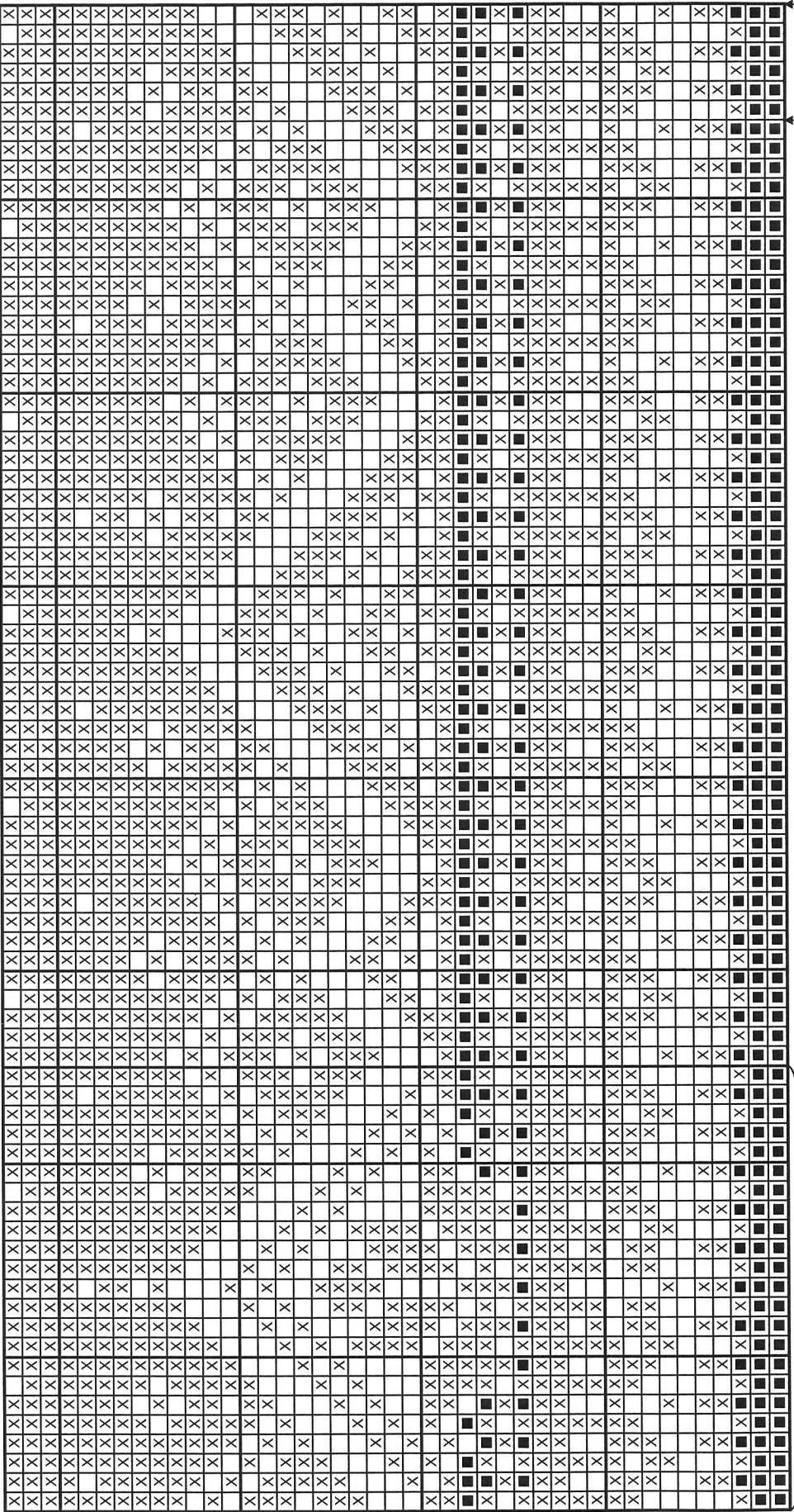


Center Front Rep Beg here

- = MC = off white 0017/natural 0020
- ⊗ = CC1 = norwegian blue 5744/black 0090
- = CC2 = navy 5563/barn red 4137

CAP PATTERN

8501-01



Center Front

XS/S/M L/XL/XXL

Beg here



MATERIALS: Heilo or Falk

SIZES: XS S M L XL XXL

PULLOVER:

Main Color:	600	650	700	750	800	850 gr
Contrast Color 1:	250	300	300	350	350	400 gr
Contrast Color 2:	50	50	50	100	100	100 gr
Contrast Color 3:	50	50	50	50	50	50 gr
Contrast Color 4:	100	100	150	150	150	200 gr

CAP:

Main Color:	100 gr for each size
Contrast Color 1:	50 gr for each size
Contrast Colors 2 - 4:	50 gr or remnants for each size

HEADBAND:

Main Color:	50 gr for each size
Contrast Colors 1 - 3:	50 gr or remnants for each size

COLORWAYS:

<u>Option</u>	<u>Main Color</u>	<u>Contrast Color</u>
A	off white 0017	CC1 - charcoal heather 0083 CC2 - grey heather 0007 CC3 - tartan green 7562 CC4 - cherry red 4018
B	cherry red 4018	CC1 - black 0090 CC2 - goldenrod 2427 CC3 - soft blue 5943 CC4 - tartan green 7562
F	black 0090	CC1 - norwegian blue 5744 CC2 - natural 0020 CC3 - soft blue 5943 CC4 - pewter 6031

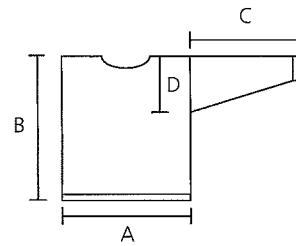
SUGGESTED NEEDLE SIZES: Cir and dp needles in sizes 2.5mm, 3mm and 3.5mm, crochet hook in size 2mm and st markers.

Note: US and metric needle sizes often do not match exactly and size equivalencies have changed. The original version of this pattern was written to use metric size needles; if in doubt as to whether a given US needle size is the same as a metric size, use the metric size needle. As always, please take the time to check your gauge carefully and change needle sizes as needed to obtain the correct gauge.

GAUGE: 24 sts and 30 rnds over St st using middle size needles, or 28 rnds over color work pattern using largest needles = 4"(10cm) x 4"(10cm).

ACCESSORIES: Pullover, shock cord and stopper.

FINISHED MEASUREMENTS:



- A** = Chest Width: 35⁷/₈" (39³/₄", 43⁵/₈", 47⁵/₈", 51¹/₂", 55⁷/₈")/
91cm(101cm, 111cm, 121cm, 131cm, 142cm)
- B** = Body Length: 25⁵/₈" (26³/₈", 27¹/₈", 28", 28³/₄", 29¹/₂")/
65cm(67cm, 69cm, 71cm, 73cm, 75cm)
- C** = Sleeve Length: 18¹/₂" (19¹/₄", 19³/₄", 20¹/₈", 20¹/₂", 20⁷/₈")/
47cm(49cm, 50cm, 51cm, 52cm, 53cm)
- D** = Armhole Depth: 9" (9¹/₂", 9⁷/₈", 10¹/₄", 10⁵/₈", 11")/
23cm(24cm, 25cm, 26cm, 27cm, 28cm)

Watch gauge carefully to obtain the correct finished measurements!

PULLOVER

BODY: With smallest cir needle and MC, C O 222/242/266/290/314/338 sts. Join and, working in the rnd, mark beg of rnd and work 7/8"(2cm) of k1, p1 rib. Next rnd, work 2 sts, yo, k2tog, work rib to last 4 sts, k2tog, yo, then work rem 2 sts. Cont rib until body measures 1 1/8"(3cm) from bottom edge. K 3 rnds, then p 1 rnd for fold line. Change to middle size cir needle and place side markers at the beg of rnd and after 111/121/133/145/157/169 sts. K 3 rnds. Work Pattern I, beg each size as shown on graph and work to next marker, then beg again at right-hand side of graph and work to end of rnd to make pattern on front and back symmetrical. Cont St st with MC and work until body measures approx 11 1/4"(12", 12 3/4", 13 5/8", 14 3/8", 15 1/8")/28.5cm(30.5cm, 32.5cm, 34.5cm, 36.5cm, 38.5cm) from fold line. Work Pattern IIA over front and Pattern IIB over back, beg each size as shown. Cont as set through rnd 77.

FRONT NECK OPENING: Work first 49/54/59/65/70/76 sts as set, C OFF the next 13/13/15/15/17/17 sts for front neck opening, then work to end of rnd (209/229/251/275/297/321 sts). Cut yarns and slip left front shoulder sts from left needle to right needle. Reattach yarns and, working back and forth over entire body, beg rows at front neck edges. Cont pattern and C OFF 5 sts at the beg of first 2 rows, 3 sts at the beg of next 2 rows, 2 sts at the beg of neck 4 rows. Dec 1 st at the beg and end of every other row twice, then every fourth row twice. AT THE SAME TIME, when 7 rows of pattern rem, shape back neck opening.

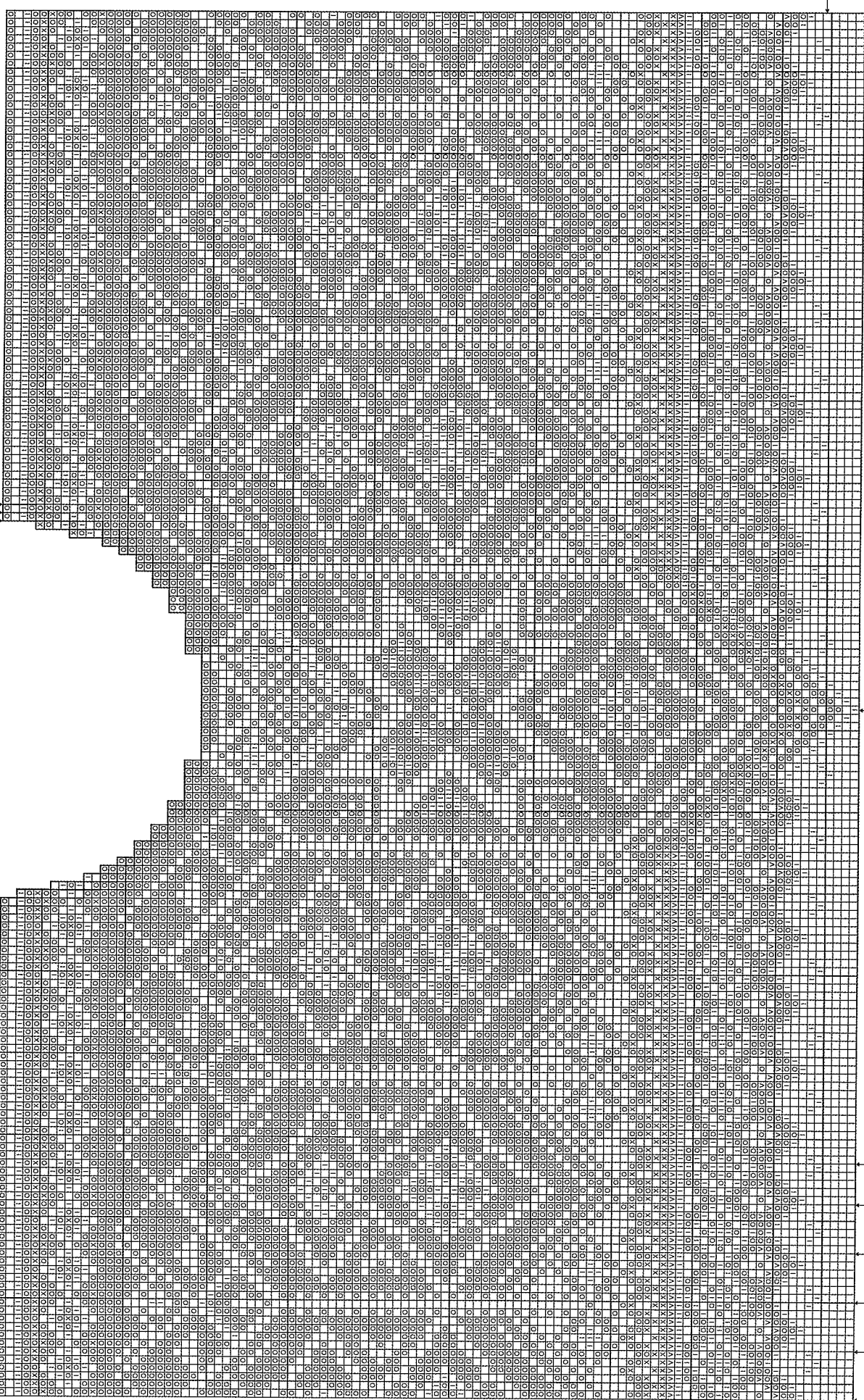
BACK NECK OPENING: Cont pattern and rem front neck shaping, work front sts and first 39/44/49/55/60/66 sts of back, C OFF the next 33/33/35/35/37/37 sts for back neck opening, then work to end of row. Working each side of body separately, cont pattern, rem front neck shaping and C OFF every other row at back neck edge, 2 sts 3 times (66/76/86/98/108/120 sts). Complete pattern. K 1 row on WS (or p 1 row on RS) with CC1, then C OFF. Complete other side of body to match, placing back neck shaping on opposite side.

SLEEVES: With smallest dp needles and MC, C O 50/50/54/54/58/58 sts. Join and, working in the rnd, mark beg of rnd and work 1 1/8"(3cm) of k1, p1 rib. K 3 rnds, then p 1 rnd for fold line. Change to middle size dp needles, then k 1 rnd and inc 5 sts evenly spaced across rnd (55/55/59/59/63/63 sts). Work Pattern I, placing center st of graph at center of sleeve. Cont St st with MC and, AT THE SAME TIME, inc 1 st at the beg and end of every fourth rnd 30/30/32/32/34/32 times, then every other rnd 0/2/0/2/0/4 times, leaving 2 sts between inc sts (115/119/123/127/131/135 sts). In the meantime, when sleeve measures approx 14 1/2"(15 3/8", 15 3/4",

XSM XL
S L XXL

XL M XS
XXL L S

PATTERN IIA



Beg here

Center of Front

Beg here

- ☐ = MC = off white 0017/cherry red 4018/black 0090
- ◻ = CC1 = charcoal hea 0093/black 0090/norwegian blue 5744
- ⊠ = CC4 = cherry red 4018/tartan green 7562/pewter 6061
- ⊞ = CC3 = tartan green 7562/soft blue 5943/soft blue 5943
- ⊡ = CC2 = grey hea 0007/glaumrod 2427/natural 0020

XS M XL
S L XXL

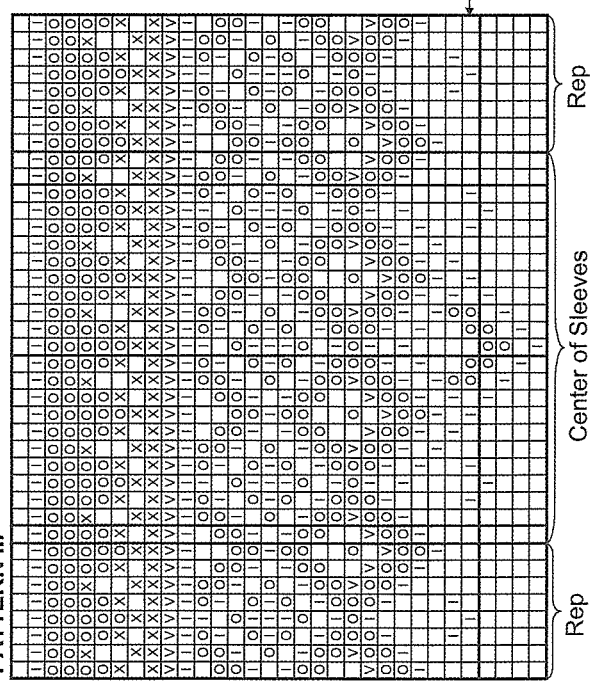
XL M XS
XXL L S

PATTERN II B

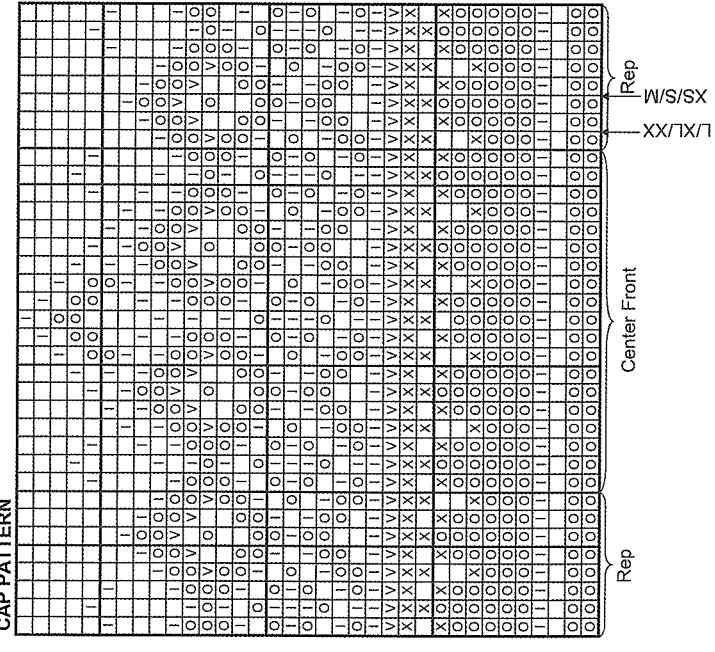
Center of Back

Beg here

PATTERN III

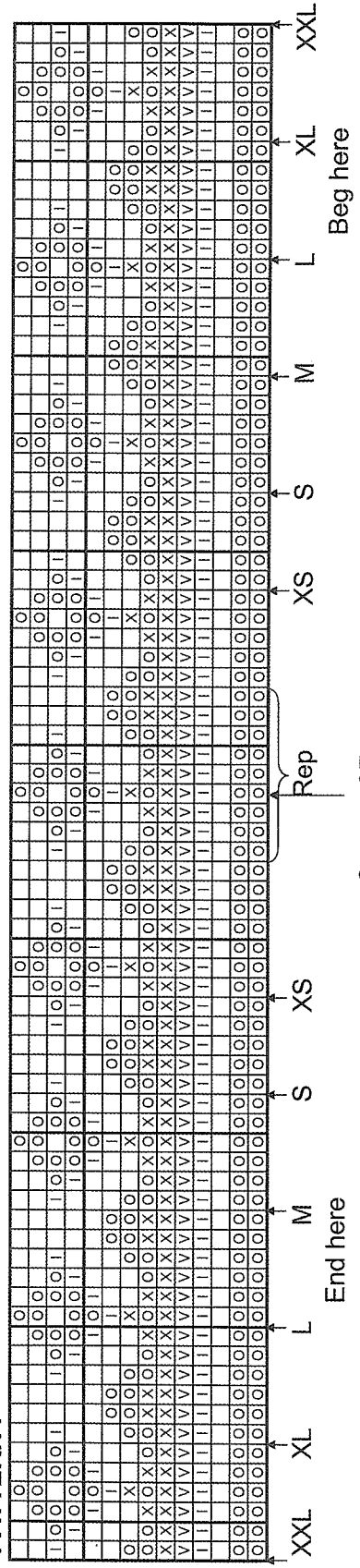


CAP PATTERN



- = MC = off white 0017/cherry red 4018/black 0090
- = CC1 = charcoal hea 0083/black 0090/norwegian blue 5744
- ⊗ = CC4 = cherry red 4018/tartan green 7562/pewter 6031
- ∇ = CC3 = tartan green 7562/soft blue 5943/soft blue 5943
- ⊠ = CC2 = grey hea 0007/goldenrod 2427/matural 0020

PATTERN I



Center of Front,
Back & Sleeves

16½", 16½", 17")/37cm(39cm,40cm,41cm,42cm,43cm) from fold line, change to largest dp or cir needles. Work Pattern III, placing center st of pattern at center of sleeve and cont rem inc, working inc into pattern. When pattern is complete, p 5 rnds with MC for facing, then C OFF loosely. Make second sleeve to match.

FINISHING: Lay body and sleeves out to finished measurements and steam lightly; do not steam ribs. Fold lower edges of body and sleeves to inside along fold lines and sew loosely to WS, leaving an opening at lower right side of body to insert shock cord. Lay sleeves flat and measure width at top of sleeves below facings. Mark this width on each side of body from shoulders down for armholes. Sew 2 machine seams, 2 sts out from where side markers were placed and across bottom of the 4 sts for armhole openings. Cut between the pairs of machine stitching, being careful not to cut stitching at bottom of armholes. Sew front and back tog at shoulders as shown on page 1.

NECKBAND: With smallest cir needle, CC1 and with RS facing, pick up 12 sts per 2"(5cm) along neck edge using a crochet hook ½-metric size smaller than needles to pick up an even number of sts k-wise. Join and, working in the rnd, mark beg of rnd and work 2 rnds of k1, p1 rib. Change to MC and k 1 rnd, then work 2 rnds of rib. Change to CC2 and k 1 rnd, then work 1 rnd of rib. Change to CC1 and k 1 rnd, then cont rib until neckband measures 1½"(4cm) from fold line. C OFF loosely in rib. Fold neckband to inside along fold line and sew loosely to WS. Sew sleeves into armholes as shown on page 1. On inside, turn facings toward body, covering cut edges, then sew facings loosely to WS. Thread shock cord through stopper, then through casing at bottom of body, beg both ends at left side. Securely sew ends of cord tog. Slip cord under casing, then sew rem opening closed.

CAP
SIZES: XS/S/M L/XL/XXL

With smallest cir needle and CC1, C O 120/132 sts. Join and, working in the rnd, mark beg of rnd and beg rnds at center back. Work 9 rnds of k1, p1 rib. K 2 rnds, then p 1 rnd for fold line and inc 1 st at end of rnd (121/133 sts). Change to middle size cir needle and work Cap Pattern, beg each size as shown and work rep over 51/57 sts, next 19 sts over center front, then beg 8-st rep at left-hand side of graph and work to end of rnd. Cont rep through rnd 31 of pattern. Work rem 3 rnds with MC only; use Duplicate St embroidery to work pattern at center front when cap is complete. Cont St st with MC until cap measures 6¾"(7¼")/17cm(18.5cm) from fold line and dec 1 st at end of last rnd (120/132 sts).

SHAPING: Change to middle size dp needles. Next rnd, * k 4 sts, k2tog; rep from * to end of rnd (100/110 sts). K 5 rnds without dec. Next rnd, * k 3 sts, k2tog; rep from * to end of rnd (80/88 sts). K 3 rnds without dec. Next rnd, * k 2 sts, k2tog; rep from * to end of rnd (60/66 sts). K 2 rnds without dec. K2tog across next rnd, then gather rem 30/33 sts on a piece of yarn and fasten securely.

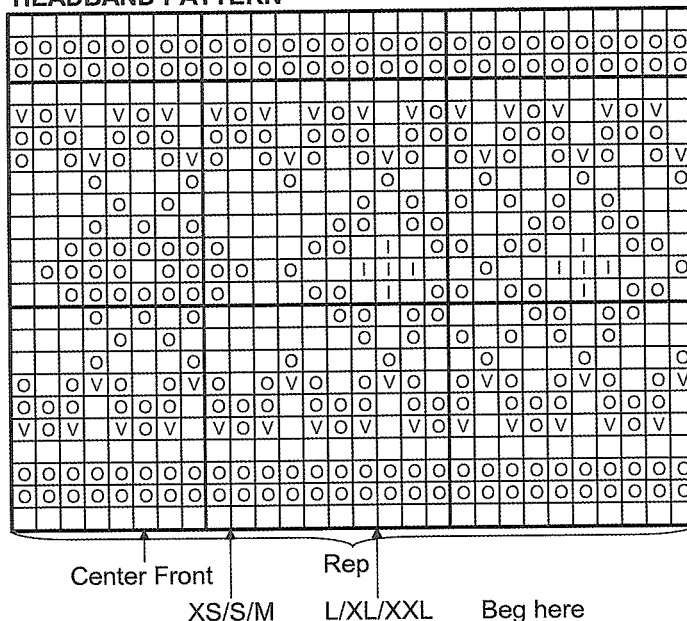
FINISHING: Fold lower edge of cap to inside along fold line, then sew loosely to WS. Make 2 tassels with MC, each approx 2¾"(7cm) long. Make a twisted cord with MC approx 5½"(14cm) long. Securely attach a tassel to each end of cord, then securely sew center of cord to top of cap.

HEADBAND
SIZES: XS/S/M L/XL/XXL

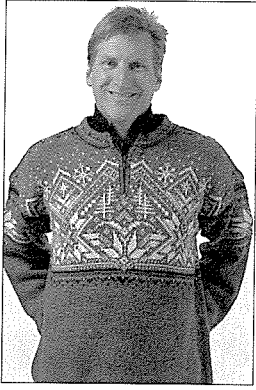
With smallest cir needle and MC, C O 119/131 sts. Join and, working in the rnd, mark beg of rnd and beg rnds at center back. Work 1½"(4cm) of St st, then p 1 rnd for fold line. Change to largest cir needle. Work Headband Pattern, beg each size as shown on graph, then cont 28-st rep to end of rnd. Change to smallest cir needle and p 1 rnd for fold line. Work 1½"(4cm) of St st, then C OFF loosely.

FINISHING: Fold long edges of headband to inside along fold lines, then loosely sew C O and C OFF edges tog.

HEADBAND PATTERN



- = MC = off white 0017/cherry red 4018/black 0090
- ⊙ = CC1 = charcoal hea 0083/black 0080/norwegian blue 5744
- X = CC4 = cherry red 4018/tartan green 7562/pewter 6031
- | = CC3 = tartan green 7562/soft blue 5943/soft blue 5943
- = CC2 = grey hea 0007/goldenrod 2427/natural 0020



MATERIALS: Heilo or Falk

SIZES:	XS	S	M	L	XL	XXL
---------------	-----------	----------	----------	----------	-----------	------------

PULLOVER:

Main Color:	700	750	800	850	900	950 gr
Contrast Color 1:	100	100	100	100	100	150 gr
Contrast Color 2:	50	50	50	50	50	50 gr
Contrast Color 3:	150	150	150	150	200	200 gr
Contrast Color 4:	50	50	50	50	50	50 gr

CAP:

Main Color:	100 gr for each size
Contrast Color 1:	50 gr for each size
Contrast Colors 2 - 4:	50 gr or remnants for 3 each size

COLORWAYS:

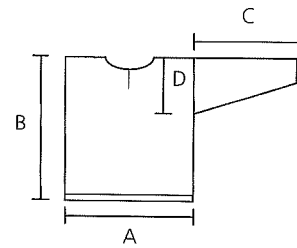
<u>Option</u>	<u>Main Color</u>	<u>Contrast Color</u>
E	grey heather 0007	CC1 - black 0090 CC2 - barn red 4137 CC3 - off white 0017 CC4 - bronze 9834
F	black 0090	CC1 - barn red 4137 CC2 - burnt orange 3418 CC3 - natural 0020 CC4 - norwegian blue 5744
H	norwegian blue 5744	CC1 - black 0090 CC2 - soft blue 5943 CC3 - natural 0020 CC4 - mist blue 5813

SUGGESTED NEEDLE SIZES: Cir and dp needles in sizes 2.5mm, 3mm and 3.5mm, crochet hook in size 2mm, blunt tapestry needle and st markers. **Note:** US and metric needle sizes often do not match exactly and size equivalencies have changed. The original version of this pattern was written to use metric size needles; if in doubt as to whether a given US needle size is the same as a metric size, use the metric size needle. As always, please take the time to check your gauge carefully and change needle sizes as needed to obtain the correct gauge.

GAUGE: 24 sts and 30 rnds over St st using middle size needles, or 28 rnds over color work pattern using largest needles = 4"(10cm) x 4"(10cm).

ACCESSORIES: Pullover, 6¼"(16cm) zipper, shock cord and stopper.

FINISHED MEASUREMENTS:



A = Chest Width:	35 ⁷ / ₈ " (39 ³ / ₄ ", 43 ⁵ / ₈ ", 47 ⁵ / ₈ ", 51 ¹ / ₂ ", 55 ⁷ / ₈ ")/ 91cm (101cm, 111cm, 121cm, 131cm, 142cm)
B = Body Length:	25 ⁵ / ₈ " (26 ³ / ₈ ", 27 ¹ / ₈ ", 28", 28 ³ / ₄ ", 29 ¹ / ₂ ")/ 65cm (67cm, 69cm, 71cm, 73cm, 75cm)
C = Sleeve Length:	18 ¹ / ₂ " (19 ¹ / ₄ ", 19 ³ / ₄ ", 20 ¹ / ₈ ", 20 ¹ / ₂ ", 20 ⁷ / ₈ ")/ 47cm (49cm, 50cm, 51cm, 52cm, 53cm)
D = Armhole Depth:	9" (9 ¹ / ₂ ", 9 ⁷ / ₈ ", 10 ¹ / ₄ ", 10 ⁵ / ₈ ", 11")/ 23cm (24cm, 25cm, 26cm, 27cm, 28cm)

Watch gauge carefully to obtain the correct finished measurements!

PULLOVER

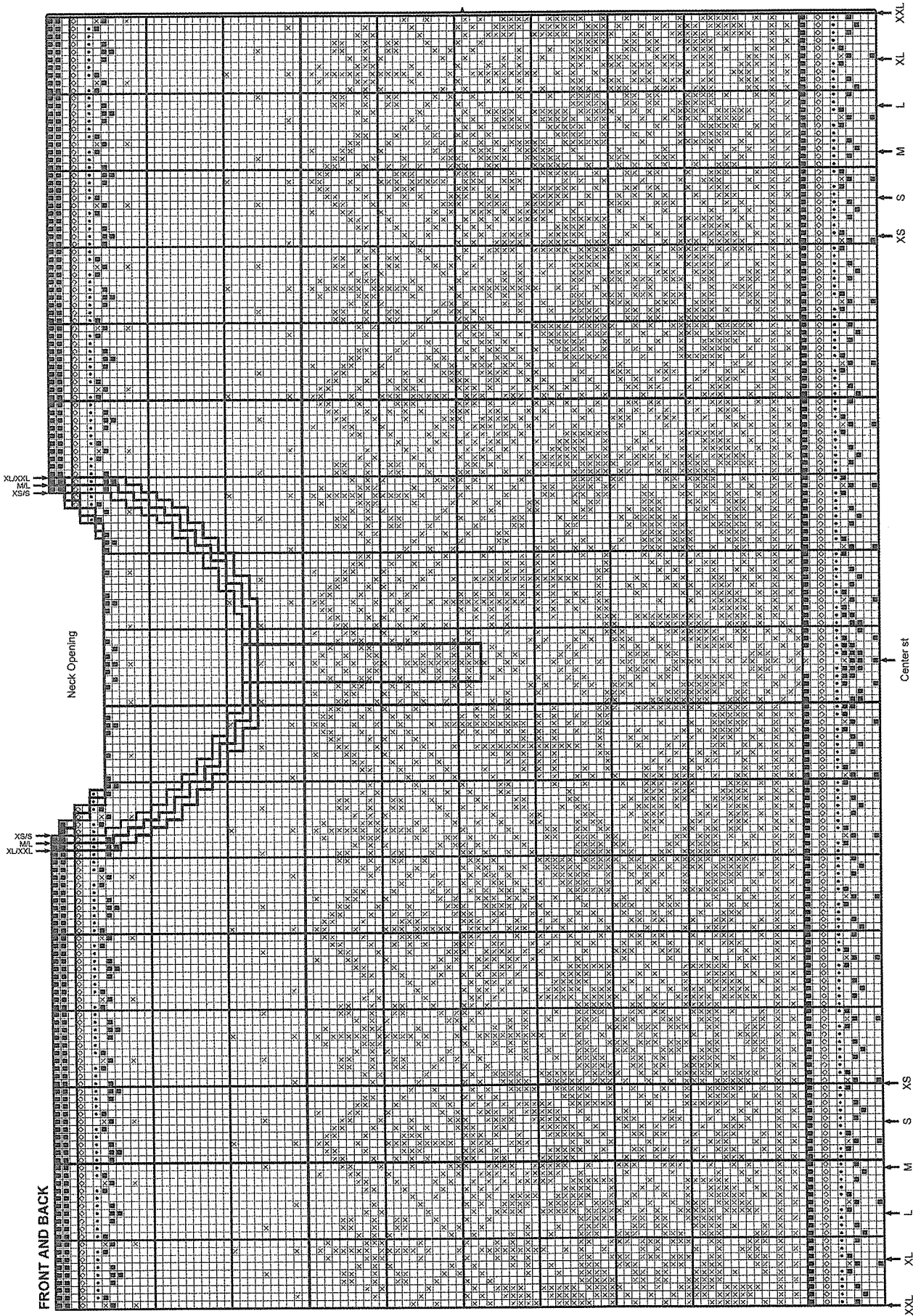
BODY: With smallest cir needle and MC, C O 222/242/266/290/314/338 sts. Join and, working in the rnd, mark beg of rnd and work 7/8"(2cm) of k1, p1 rib. Next rnd, work 2 sts, yo, k2tog, work rib to last 4 sts, k2tog, yo, then work rem 2 sts. Cont rib until body measures 1 1/8"(3cm) from bottom edge. Work 3/8"(1cm) of St st, then p 1 rnd for fold line. Change to largest cir needle and place side markers at the beg of rnd and after 111/121/133/145/157/169 sts. K 1 rnd. Work Pattern I, beg each size as shown on graph and work to marker, then beg again at right-hand side of graph as before and work to end of rnd. Change to middle size cir needle. Beg St st with MC and work until body measures approx 10 5/8"(11 3/8", 12 1/4", 13", 13 3/4", 14 1/2")/27cm (29cm, 31cm, 33cm, 35cm, 37cm) from fold line. Work Pattern IIA over front and IIB over back, beg each size as shown on graph, working through rnd 52 of both patterns. **Note:** Work rnds 10 and 11 in one color, then add pattern at center of front and back in appropriate colors using Duplicate St embroidery when body is complete.

PLACKET OPENING: Work first 53/58/64/70/76/82 sts as set, C OFF the next 5 sts for placket opening, then work to end of rnd (217/237/261/285/309/333 sts). Next rnd, work as set to placket opening, C O 3 new sts over C OFF sts of previous rnd, then work to end of rnd (these are cutting sts; work in ground color throughout and exclude from st counts). Work as set through rnd 83/83/82/82/81/81 of graphs.

FRONT NECK OPENING: Next rnd, work first 49/54/59/65/70/76 sts as set, C OFF the next 11/11/13/13/15/15 sts for front neck opening (the 3 cutting sts, plus 4/4/5/5/6/6 on either side), then work to end of rnd (209/229/251/275/297/321 sts). Cut yarns and slip left front shoulder sts from left needle to right needle. Reattach yarns and, working back and forth over entire body, beg rows at front neck edges. Cont pattern and C OFF 3 sts at the beg of first 4 rows, 2 sts at the beg of next 6 rows, then dec 1 st at the beg and end of every other row 4 times. AT THE SAME TIME, when 7 rows of pattern rem, shape back neck opening.

BACK NECK OPENING: Cont pattern, rem front neck shaping, and work front sts, then first 39/44/49/55/60/66 sts of back, C OFF the next 33/33/35/35/37/37 sts for back neck opening, then work to end of row. Working each side of body separately, cont pattern and C OFF every other row at back neck edge, 2 sts 3 times (66/76/86/98/108/120 sts). When pattern is complete, p 1 row on RS (or k 1 row on WS), then C OFF. Complete other side of body to match, placing back neck shaping on opposite side.

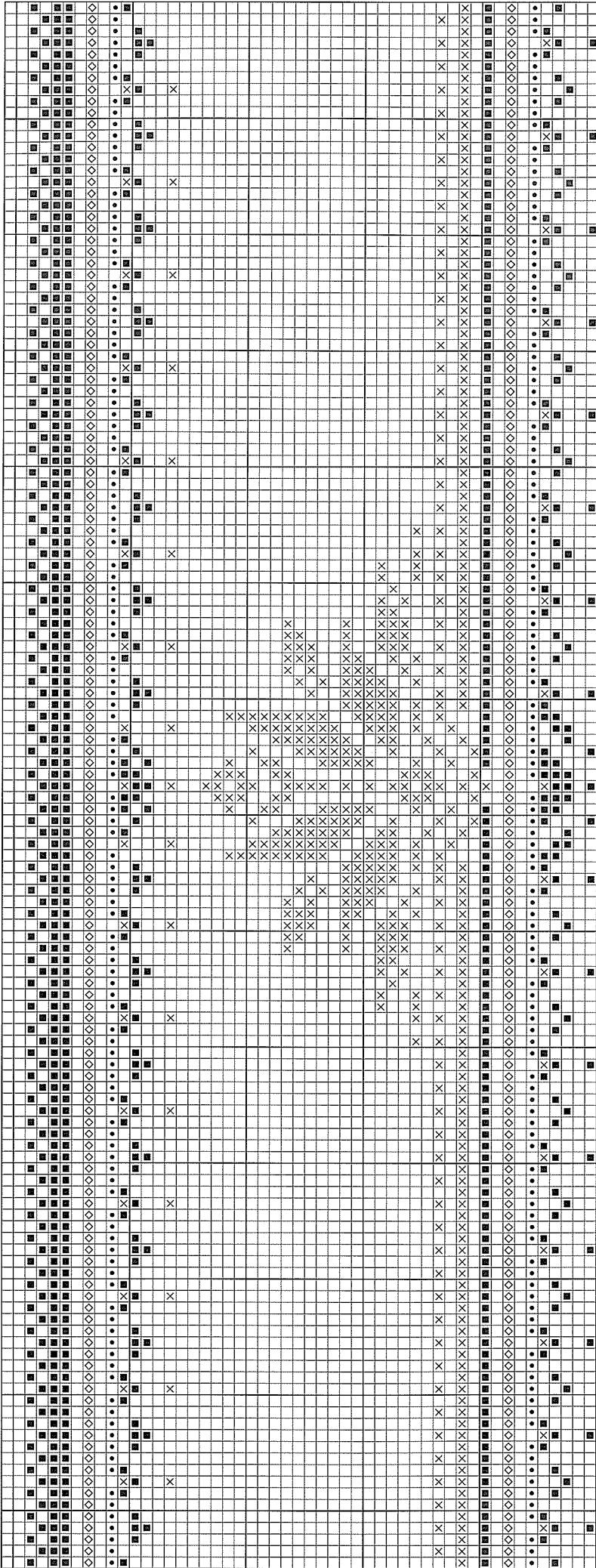
PATTERN IIB



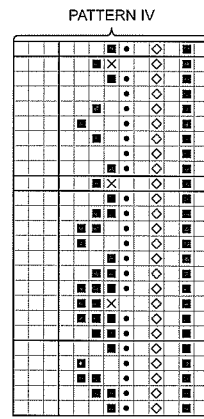
- = MC = grey heather 0007/black 0090/norwegian blue 5744
- = CC1 = black 0090/barn red 4137/black 0090
- ◇ = CC2 = barn red 4137/burnt orange 3418/soft blue 5943
- ⊗ = CC3 = off white 0017/natural 0020/natural 0020
- = CC4 = bronze 9834/norwegian blue 5744/mist blue 5813

SLEEVE

PATTERN III

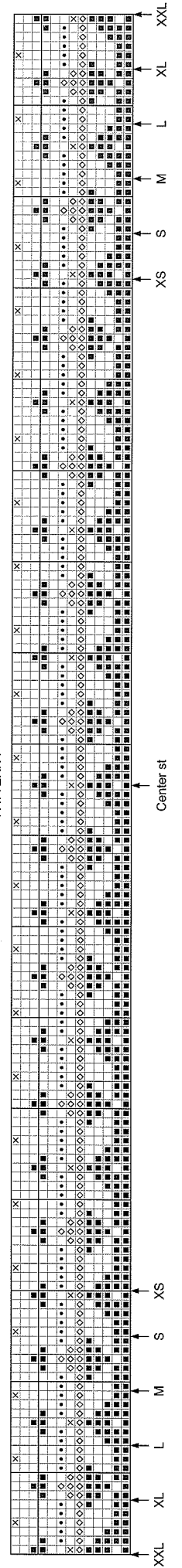


NECKBAND



- = MC = grey heather 0007/black 0090/norwegian blue 5744
- = CC1 = black 0090/barn red 4137/black 0090
- ◇ = CC2 = barn red 4137/burnt orange 3418/soft blue 5943
- ⊗ = CC3 = off white 0017/natural 0020/natural 0020
- = CC4 = bronze 9834/norwegian blue 5744/mist blue 5813

PATTERN I



SLEEVES: With smallest dp needles and MC, C O 50/50/54/54/58/58 sts. Join and, working in the rnd, mark beg of rnd and work 1 1/8" (3cm) of k1, p1 rib. K 3 rnds, then p 1 rnd for fold line. Change to middle size dp needles, then k 1 rnd and inc 5 sts evenly spaced across rnd (55/55/59/59/63/63 sts). Work Pattern I, placing center of graph at center of sleeve. Cont St st with MC and, AT THE SAME TIME, inc 1 st at the beg and end of every fourth rnd 30/30/32/32/32/32 times, then every other rnd 0/2/0/2/2/4 times, leaving 2 sts between inc sts and working inc sts into pattern (115/119/123/127/131/135 sts). In the meantime, when sleeve measures approx 11 3/8" (12 3/8", 13", 13 3/8", 13 3/4", 14 1/8")/30cm (31.5cm, 33cm, 34cm, 35cm, 36cm) from fold line, work Pattern III, placing center of pattern at center of sleeve and cont rem inc as set. **Note:** K rnds 15-34 in MC only, then add pattern in appropriate colors using Duplicate St embroidery when sleeve is complete. When pattern is complete, p 5 rnds with MC for facing, then C OFF loosely. Make second sleeve to match.

FINISHING: Lay body and sleeves out to finished measurements and steam lightly; do not steam ribs. Fold lower edges of body and sleeves to inside along fold lines and sew loosely to WS, leaving an opening at lower right side of body to insert shock cord. Lay sleeves flat and measure width at top of sleeves below facings. Mark this width on each side of body from shoulders down for armholes. Sew 2 machine seams, 2 sts out from where side markers were placed and across bottom of the 4 sts for armhole openings, and along both sides of cutting sts at front placket opening. Cut between the pairs of machine stitching, being careful not to cut stitching at bottom of armholes. Sew front and back tog at shoulders as shown on page 1. Thread blunt tapestry needle with appropriate colors and work Duplicate St embroidery on front, back and sleeves.

NECKBAND: With smallest cir needle, MC and with RS facing, pick up 12 sts per 2" (5cm) along neck edge using a crochet hook 1/2-metric size smaller than needles to pick up an odd number of sts k-wise. Working back and forth, beg with a WS row and work Pattern IV, placing center back of pattern at center back of neck. P 1 row on RS (or k 1 row on WS) for fold line, then work 3 rows of St st. Beg k1, p1 rib and work until neckband measures approx 1 5/8" (4cm) from fold line. C OFF loosely in rib.

PLACKETS: With smaller dp or cir needles, MC and with RS facing, pick up sts along one side of placket opening, 1 st in on body side from machine seams, and end of neckband to fold line in same manner as neckband. Working back and forth, beg with a WS row and work 3 rows of St st. P 1 row on RS for fold line. Work 3 rows of St st, then C OFF loosely. Work placket along other side of placket opening to match. Fold plackets to inside along

fold lines, covering cut edges, then sew neatly to WS. Neatly sew ends of placket closed, and lower ends to C OFF edge at beg of placket opening.

ZIPPER: Pin zipper into placket opening, placing top of zipper just below neckband fold line, and with edges of plackets meeting at center of zipper. Neatly sew zipper to body along placket pickup rows. Thread shock cord through stopper, then through casing at bottom of body, beg both ends at left side. Securely sew ends of cord tog. Slip cord under casing, then sew rem opening closed. Fold neckband to inside along fold line and sew loosely to WS. Sew ends of neckband to back of zipper tape, making sure zipper will slide past edge of neckband. Pin sleeves into armholes, placing centers of sleeves at shoulder seams, then neatly sew sleeves to body as shown on page 1. On inside, turn facings toward body, covering cut edges, then loosely sew facings to WS.

CAP

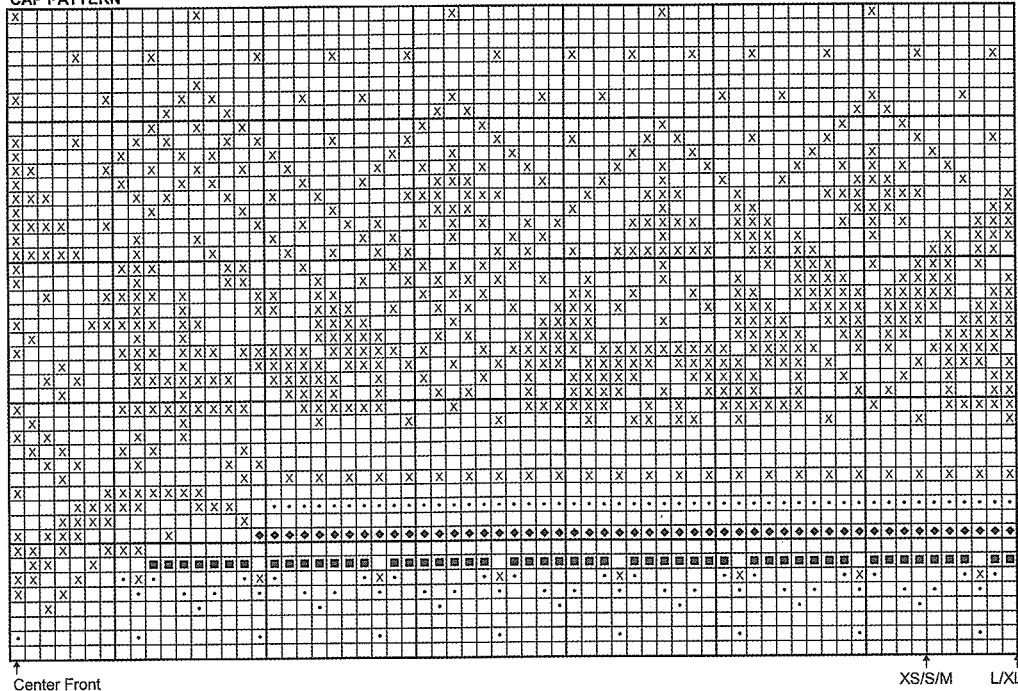
SIZES: XS/S/M L/XL/XXL

With smaller cir needle and MC, C O 120/132 sts. Join and, working in the rnd, mark beg of rnd and beg rnds at center back. Work 9 rnds of k1, p1 rib. K 2 rnds, then p 1 rnd for fold line and inc 1 st at end of rnd (121/133 sts). Change to largest cir needle. Work Cap Pattern, beg each size as shown on graph and work to center st, then working from st to right of center st, work back toward right-hand side of graph (rnd will end 1 st before starting point); **Note:** Work rnds 4-12 with MC and stripe colors only, then add center front pattern using Duplicate St embroidery with appropriate colors when cap is complete. Dec 1 st at end of last rnd (120/132 sts); cap should measure approx 6 1/2" (16.5cm) from fold line.

SHAPING: Change to middle size dp needles. Working St st with MC, * k 8/9 sts, k2tog; rep from * to end of rnd (108/120 sts). K 1 rnd without dec. Next rnd, * k 7/8 sts, k2tog; rep from * to end of rnd (96/108 sts). K 1 rnd without dec. Cont dec next rnd, then every other rnd 5/6 times more, with 1 less st between dec sts each time, ending with a dec rnd. Gather rem 24 sts on a piece of yarn and fasten securely.

FINISHING: Thread blunt tapestry needle with appropriate colors and work Duplicate St embroidery on rnds 4-12. Fold lower edge of cap to inside along fold line and sew loosely to WS. Make 2 tassels with MC, each approx 2 3/4" (7cm) long. Make a twisted cord with MC approx 5 1/8" (5 1/2")/13cm (14cm) long. Securely attach a tassel to each end of cord, then attach center of cord to top of cap.

CAP PATTERN



- MC = grey hea 0007/black 0090/norwegian blue 5744
- CC3 = off white 0017/natural 0020/natural 0020
- CC2 = barn red 4137/burnt orange 3418/soft blue 5943
- CC4 = bronze 9834/norwegian blue 5744/mist blue 5813
- CC1 = black 0090/barn red 4137/black 0090



MATERIALS: Heilo or Falk

SIZES: XS S M L XL XXL

PULLOVER:

Main Color:	550	600	650	700	750	800 gr
Contrast Color 1:	200	200	200	250	250	300 gr
Contrast Color 2:	50	50	50	50	50	100 gr
Contrast Color 3:	150	150	200	200	250	250 gr

CAP:

Main Color:	100 gr for each size
Contrast Color 1:	50 gr for each size
Contrast Color 2:	50 gr for each size
Contrast Color 3:	Remnants or 50 gr for each size

COLORWAYS:

Option	Main Color	Contrast Color
B	black 0090	CC1 - barn red 4137 CC2 - natural 0020 CC3 - goldenrod 2427
H	norwegian blue 5744	CC1 - black 0090 CC2 - natural 0020 CC3 - bronze 9834

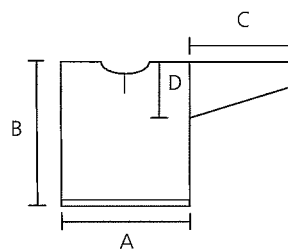
SUGGESTED NEEDLE SIZES: Cir and dp needles in sizes 2.5mm, 3mm and 3.5mm, crochet hook in size 2mm and st markers.

Note: US and metric needle sizes often do not match exactly and size equivalencies have changed. The original version of this pattern was written to use metric size needles; if in doubt as to whether a given US needle size is the same as a metric size, use the metric size needle. As always, please take the time to check your gauge carefully and change needle sizes as needed to obtain the correct gauge.

GAUGE: 24 sts and 30 rnds over St st using middle size needles, or 28 rnds over color work pattern using largest needles = 4"(10cm) x 4"(10cm).

ACCESSORIES: Pullover, 5½"(14cm) zipper, shock cord and stopper.

FINISHED MEASUREMENTS:



- A** = Chest Width: 35⁷/₈"(39³/₄" ,43⁵/₈" ,47⁵/₈" ,51¹/₂" ,55⁷/₈")/
91cm(101cm,111cm,121cm,131cm,142cm)
- B** = Body Length: 25⁵/₈"(26³/₈" ,27¹/₈" ,28" ,28³/₄" ,29¹/₂")/
65cm(67cm,69cm,71cm,73cm,75cm)
- C** = Sleeve Length: 18¹/₂"(19¹/₄" ,19³/₄" ,20¹/₈" ,20¹/₂" ,20⁷/₈")/
47cm(49cm,50cm,51cm,52cm,53cm)
- D** = Armhole Depth: 9"(9¹/₂" ,9⁷/₈" ,10¹/₄" ,10⁵/₈" ,11")/
23cm(24cm,25cm,26cm,27cm,28cm)

Watch gauge carefully to obtain the correct finished measurements!

PULLOVER

BODY: With smallest cir needle and MC, C O 222/242/266/290/314/338 sts. Join and, working in the rnd, mark beg of rnd and work 7⁷/₈"(2cm) of k1, p1 rib. Next rnd, work first 2 sts, yo, k2tog, work rib to last 4 sts, k2tog, yo, then work rem 2 sts. Cont rib until body measures 1¹/₈"(3cm) from bottom edge. Work 3³/₈"(1cm) of St st, then p 1 rnd for fold line. Change to middle size cir needle and place side markers at the beg of rnd and after 111/121/133/145/157/169 sts. Work Pattern I, beg each size as shown on graph and work to marker, then beg again at right-hand side of graph and work to end of rnd. Change to MC and work until body measures approx 11³/₄"(12⁵/₈" ,13³/₈" ,14¹/₈" ,15" ,15³/₄")/30cm(32cm,34cm,36cm,38cm,40cm) from fold line. Change to largest cir needle. Work Pattern IIA over front, beg each size as shown on graph and work to marker, then work Pattern IIB over back, beg as shown, then work to end of rnd. **Note:** Work rnds 2, 3, 4 and 6 with MC only, and rnd 5 with MC and CC1 only, then add CC2 using Duplicate St embroidery when body is complete. Cont pattern through rnd 46.

PLACKET OPENING: Next rnd, work first 54/59/65/71/77/83 sts as set, C OFF the next 3 sts for placket opening, then work to end of rnd (219/239/263/287/311/335 sts). Next rnd, C O 3 new sts over C OFF sts of previous rnd (these are cutting sts; work as shown on graph and exclude from st counts). Cont through rnd 73/73/72/72/71/71.

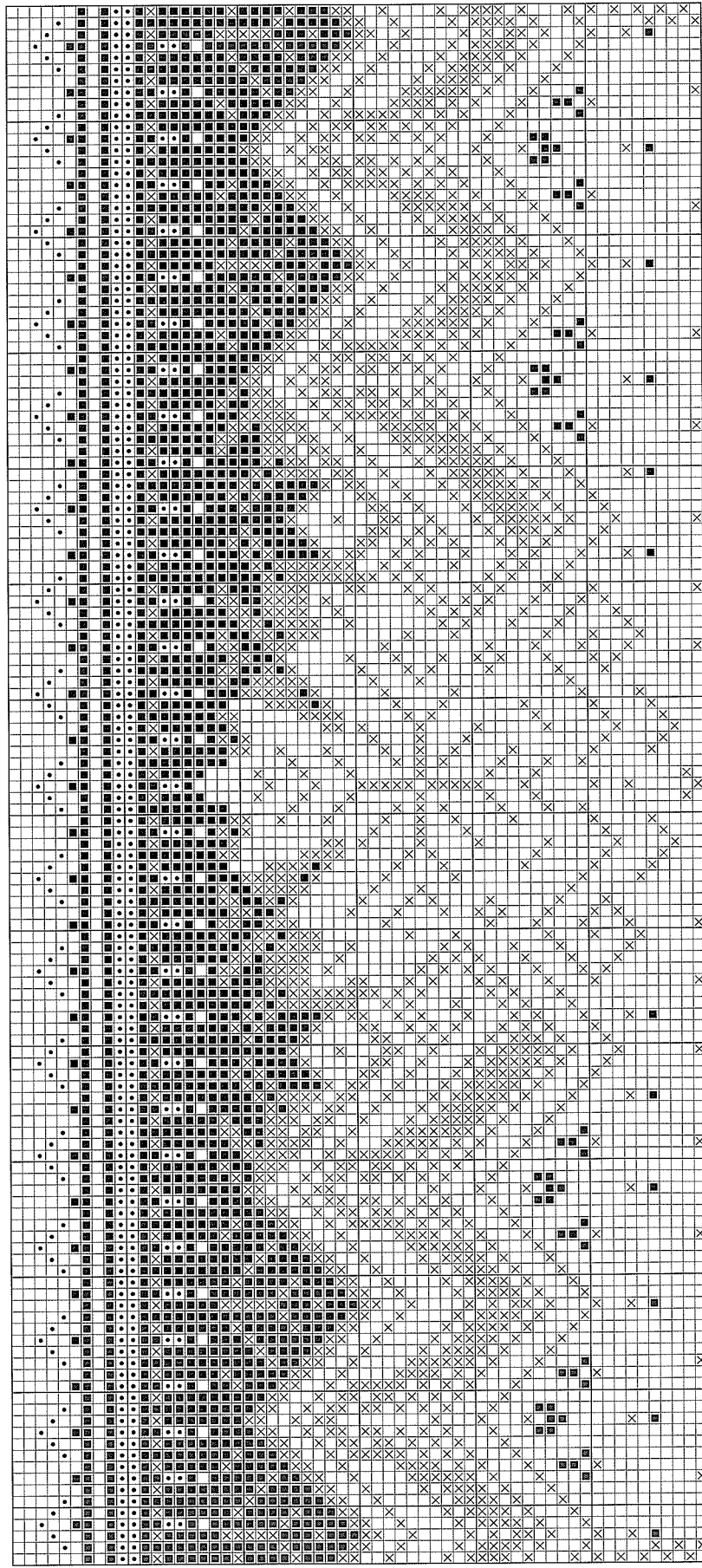
FRONT NECK OPENING: Next rnd, work first 49/54/59/65/70/76 sts as set, C OFF the next 13/13/15/15/17/17 sts for neck opening (the 3 cutting st, plus 5/5/6/6/7/7 sts on either side), then work to end of rnd (209/229/251/275/297/321 sts). Cut yarn and slip left front shoulder sts from left needle to right needle. Reattach yarn and, working back and forth over entire body, beg rows at front neck edges. Cont pattern and C OFF 3 sts at the beg of first 4 rows, 2 sts at the beg of next 6 rows, then dec 1 st at the beg and end of every other row 4 times. AT THE SAME TIME, when 7 rows of pattern rem, shape back neck opening.

BACK NECK OPENING: Work rem front neck dec, and first 39/44/49/55/60/66 sts of back, C OFF the next 33/33/35/35/37/37 sts for back neck opening then work to end of row. Working each side of body separately, cont pattern and C OFF every other row at back neck edge, 2 sts 3 times (66/76/86/98/108/120 sts). Complete pattern. K 1 row on WS (or p 1 row on RS) with MC, then C OFF. Complete other side of body to match, placing back neck shaping on opposite side.

SLEEVES: With smallest dp needles and MC, C O 50/50/54/54/58/58 sts. Join and, working in the rnd, mark beg of rnd and

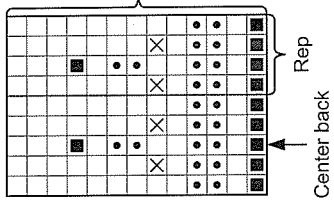
SLEEVE

PATTERN III



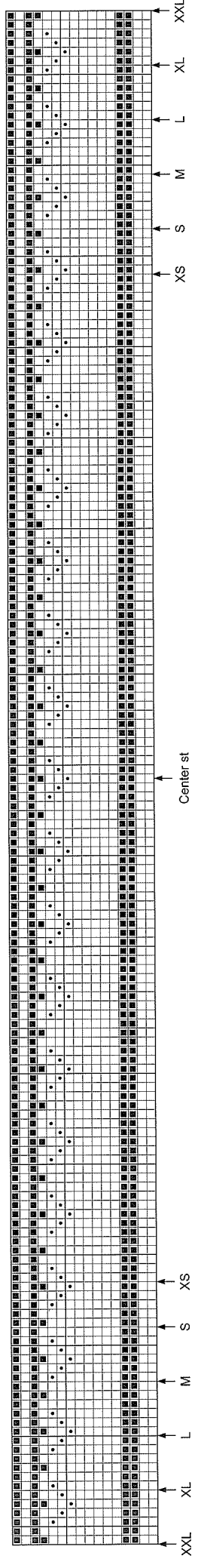
NECKBAND

PATTERN IV

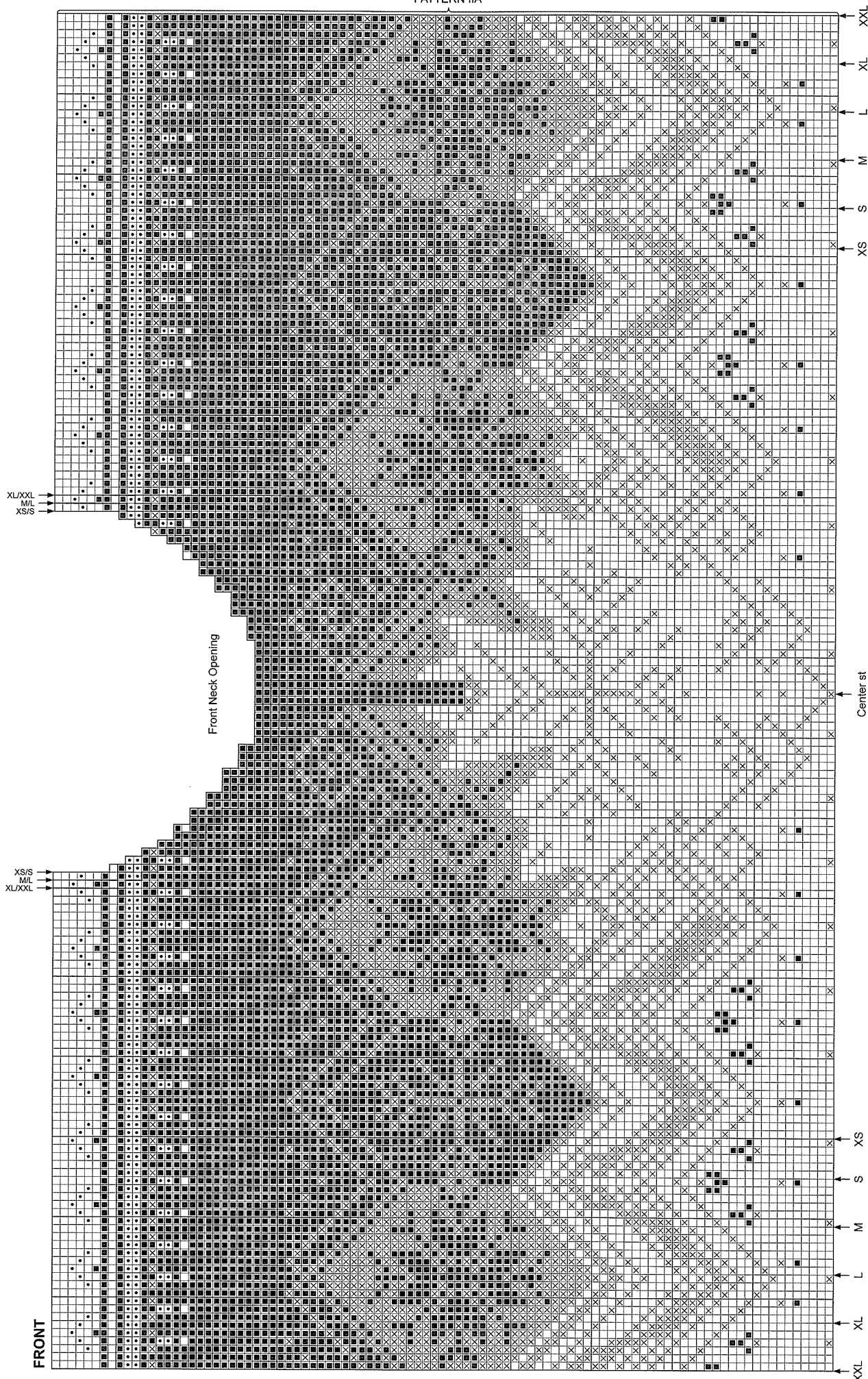


- = MC = black 0090/norwegian blue 5744
- = CC1 = barn red 4137/black 0090
- ◼ = CC2 = goldenrod 2427/bronze 9634
- ⊗ = CC3 = natural 0020/natural 0020

PATTERN I

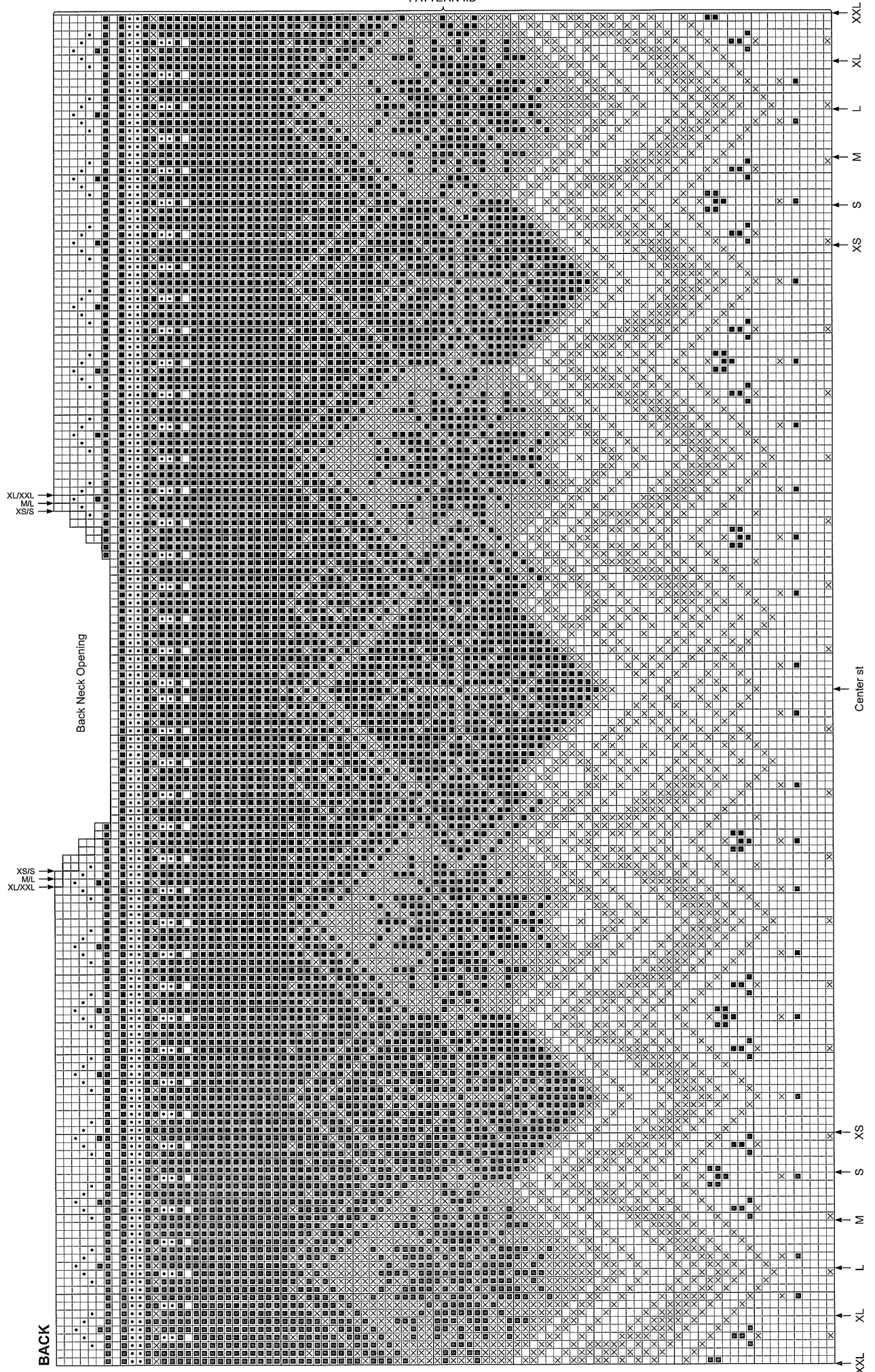


PATTERN IIA



- = MC = black 0090/norwegian blue 5744
- = CC1 = barn red 4137/black 0090
- = CC2 = goldenrod 2427/bronze 9834
- ⊗ = CC3 = natural 0020/natural 0020

PATTERN IIB



work 1 1/8" (3cm) of k1, p1 rib. K 3 rnds, then p 1 rnd for fold line. Change to middle size dp needles, then k 1 rnd and inc 5 sts evenly spaced across rnd (55/55/59/59/63/63 sts). Work Pattern I, placing center st of graph at center of sleeve. Cont St st with MC and, AT THE SAME TIME, inc 1 st at the beg and end of every fourth rnd 28/28/30/30/30/30 times, then every other rnd 2/4/2/4/4/6 times, leaving 2 sts between inc sts, and work until sleeve measures approx 10" (10 5/8", 11 1/4", 11 5/8", 12", 12 3/8")/25.5cm(27cm,28.5cm,29.5cm,30cm,31.5cm) from fold line. Change to largest dp or cir needles. Work Pattern III, placing center st of pattern at center of sleeve and cont rem inc as set, working inc sts into pattern (115/119/123/127/131/135 sts). P 5 rnds with MC for facing, then C OFF loosely. Make second sleeve to match.

FINISHING: Lay body and sleeves out to finished measurements and steam lightly; do not steam ribs. Fold lower edges of body and sleeves to inside along fold lines and sew loosely to WS, leaving an opening at lower right side of body to insert shock cord. Lay sleeves flat and measure width at top of sleeves below facings. Mark this width on each side of body from shoulders down for armholes. Sew 2 machine seams, 2 sts out from where side markers were placed and across bottom of the 4 sts for armhole openings, and along both sides of placket opening. Cut between the pairs of machine stitching, being careful not to cut stitching at bottom of armholes. Sew front and back tog at shoulders as shown on page 1.

NECKBAND: With smallest cir needle, MC and with RS facing, pick up 12 sts per 2" (5cm) along neck edge using a crochet hook 1/2-metric size smaller than needles to pick up an odd number of sts k-wise. Working back and forth, beg with a WS row and work Pattern IV, placing center back of pattern at center back of neck. P 1 row on RS for fold line, then work 3 rows of St st. Beg k1, p1 rib and work until neckband measures approx 1 5/8" (4cm) from fold line. C OFF loosely in rib.

PLACKETS: With smaller dp or cir needles, MC and with RS facing, pick up sts along one side of placket opening, 1 st in on body side from machine seams, and end of neckband to fold line in same manner as neckband. Working back and forth, beg with a WS row and work 3 rows of St st. P 1 row on RS for fold line. Work 3 rows of St st, then C OFF loosely. Work placket along other side of placket opening to match. Fold plackets to

inside along fold lines, covering cut edges, then sew neatly to WS. Neatly sew ends of placket closed, and lower ends to C OFF edge at beg of placket opening.

ZIPPER: Pin zipper into placket opening, placing top of zipper just below neckband fold line, and with edges of plackets meeting at center of zipper. Neatly sew zipper to body along placket pickup rows. Thread shock cord through stopper, then through casing at bottom of body, beg both ends at left side. Securely sew ends of cord tog. Slip cord under casing, then sew rem opening closed. Fold neckband to inside along fold line and sew loosely to WS. Sew ends of neckband to back of zipper tape, making sure zipper will slide past edge of neckband. Pin sleeves into armholes, placing center sts of sleeves at shoulder seams, then neatly sew sleeves to body as shown on page 1. On inside, turn facings toward body, covering cut edges, then loosely sew facings to WS.

CAP
SIZES: XS/S/M L/XL/XXL

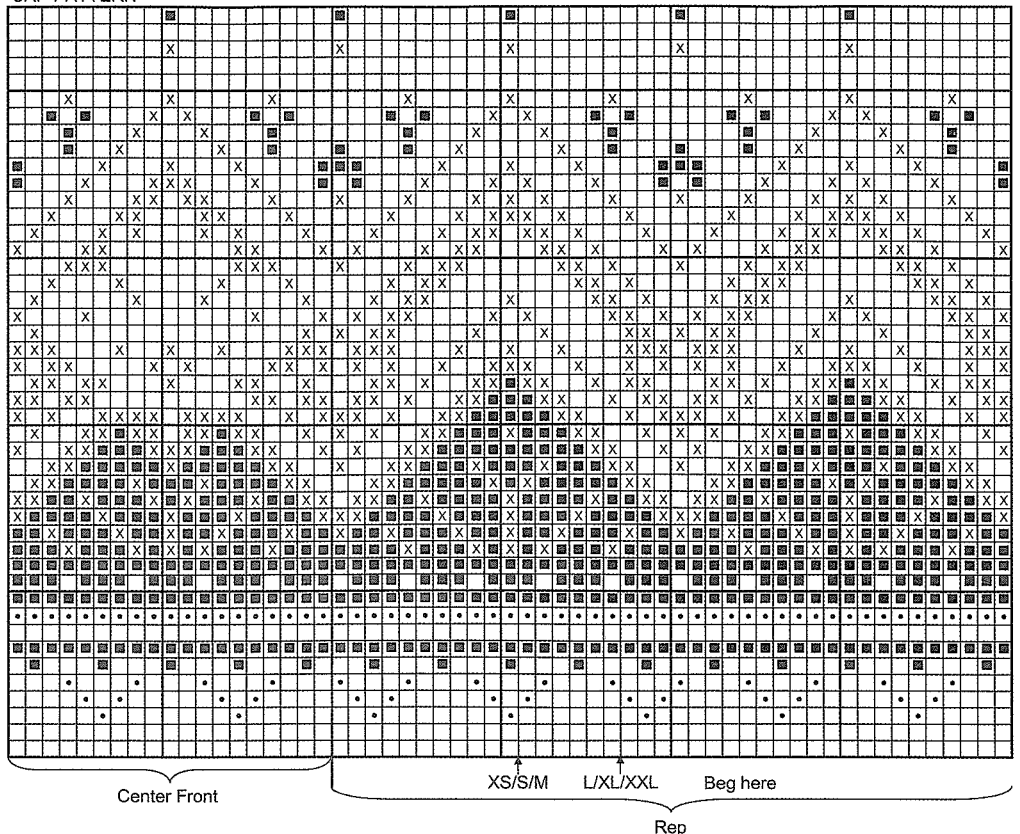
With smallest cir needle and MC, C O 120/132 sts. Join and, working in the rnd, mark beg of rnd and beg rnds at center back. Work 9 rnds of k1, p1 rib. K 2 rnds, then p 1 rnd for fold line and inc 1 st at end of rnd (121/133 sts). Change to middle size cir needle and work Cap Pattern, beg each size as shown on graph and work 40-st rep once, work next 19 sts over center front, then beg at left-hand side of rep and work 40-st rep from left to right, working to end of rnd. When pattern is complete, k 1 rnd with MC and dec 1 st (120/132 sts). Cont St st and work until cap measures approx 6 1/4" (6 3/4")/16cm(17cm) from fold line.

SHAPING: Change to middle size dp needles. Next rnd, * k 8/9 sts, k2tog; rep from * to end of rnd (108/120 sts). K 1 rnd without dec. Next rnd, * k 7/8 sts, k2tog; rep from * to end of rnd (96/108 sts). K 1 rnd without dec. Cont dec next rnd, then every other rnd 5/6 times more, with 1 less st between dec sts each time. Gather rem 24 sts on a piece of yarn and fasten securely.

FINISHING: Fold lower edge of cap to inside along fold line and sew loosely to WS. Make 2 tassels with MC, each approx 2 3/4" (7cm) long. Make a twisted cord with MC, approx 5 1/2" (14cm) long. Securely attach a tassel to each end of cord, then attach center of cord to top of cap.

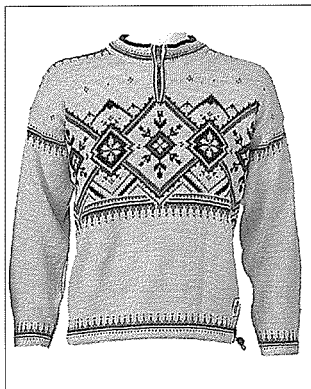
- = MC = black 0090/norwegian blue 5744
- = CC1 = barn red 4137/black 0090
- = CC2 = goldenrod 2427/bronze 9834
- = CC3 = natural 0020/natural 0020

CAP PATTERN



8501-5 MT. ROBSON 2003

PULLOVER & CAP
- DALE DESIGN



MATERIALS: Heilo or Falk

SIZES: XS S M L XL XXL

PULLOVER:

Main Color:	700	750	800	850	900	950 gr
Contrast Color 1:	50	50	100	100	100	150 gr
Contrast Color 2:	100	100	150	150	200	200 gr
Contrast Color 3:	100	100	150	150	200	200 gr

CAP:

Main Color: 100 gr for each size
Contrast Colors 1 - 3: 50 gr or remnants for each color per size

COLORWAYS:

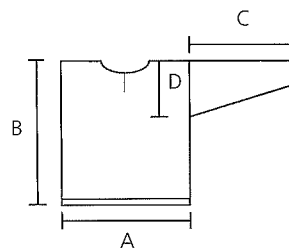
Option	Main Color	Contrast Color
B	barn red 4137	CC1 - goldenrod 2427 CC2 - black 0090 CC3 - off white 0017
J	light sheep heather 2931	CC1 - ochre 2434 CC2 - barn red 4137 CC3 - black 0090

SUGGESTED NEEDLE SIZES: Cir and dp needles in sizes 2.5mm, 3mm and 3.5mm, crochet hook in size 2mm, blunt tapestry needle and st markers. **Note:** US and metric needle sizes often do not match exactly and size equivalencies have changed. The original version of this pattern was written to use metric size needles; if in doubt as to whether a given US needle size is the same as a metric size, use the metric size needle. As always, please take the time to check your gauge carefully and change needle sizes as needed to obtain the correct gauge.

GAUGE: 24 sts and 28 rnds over color work pattern using largest needles, or 30 rnds over St st using middle size needles = 4"(10cm) x 4"(10cm).

ACCESSORIES: Pullover, 5½"(14cm) long zipper and shock cord & stopper.

FINISHED MEASUREMENTS:



- A = Chest Width:** 35⁷/₈"(39³/₄", 43⁵/₈", 47⁵/₈", 51¹/₂", 55⁷/₈")/
91cm(101cm, 111cm, 121cm, 131cm, 142cm)
B = Body Length: 25⁵/₈"(26³/₈", 27¹/₈", 28", 28³/₄", 29¹/₂")/
65cm(67cm, 69cm, 71cm, 73cm, 75cm)
C = Sleeve Length: 18¹/₂"(19¹/₄", 19³/₄", 20¹/₈", 20¹/₂", 20⁷/₈")/
47cm(49cm, 50cm, 51cm, 52cm, 53cm)
D = Armhole Depth: 9"(9¹/₂", 9⁷/₈", 10¹/₄", 10⁵/₈", 11")/
23cm(24cm, 25cm, 26cm, 27cm, 28cm)

Watch gauge carefully to obtain the correct finished measurements!

PULLOVER

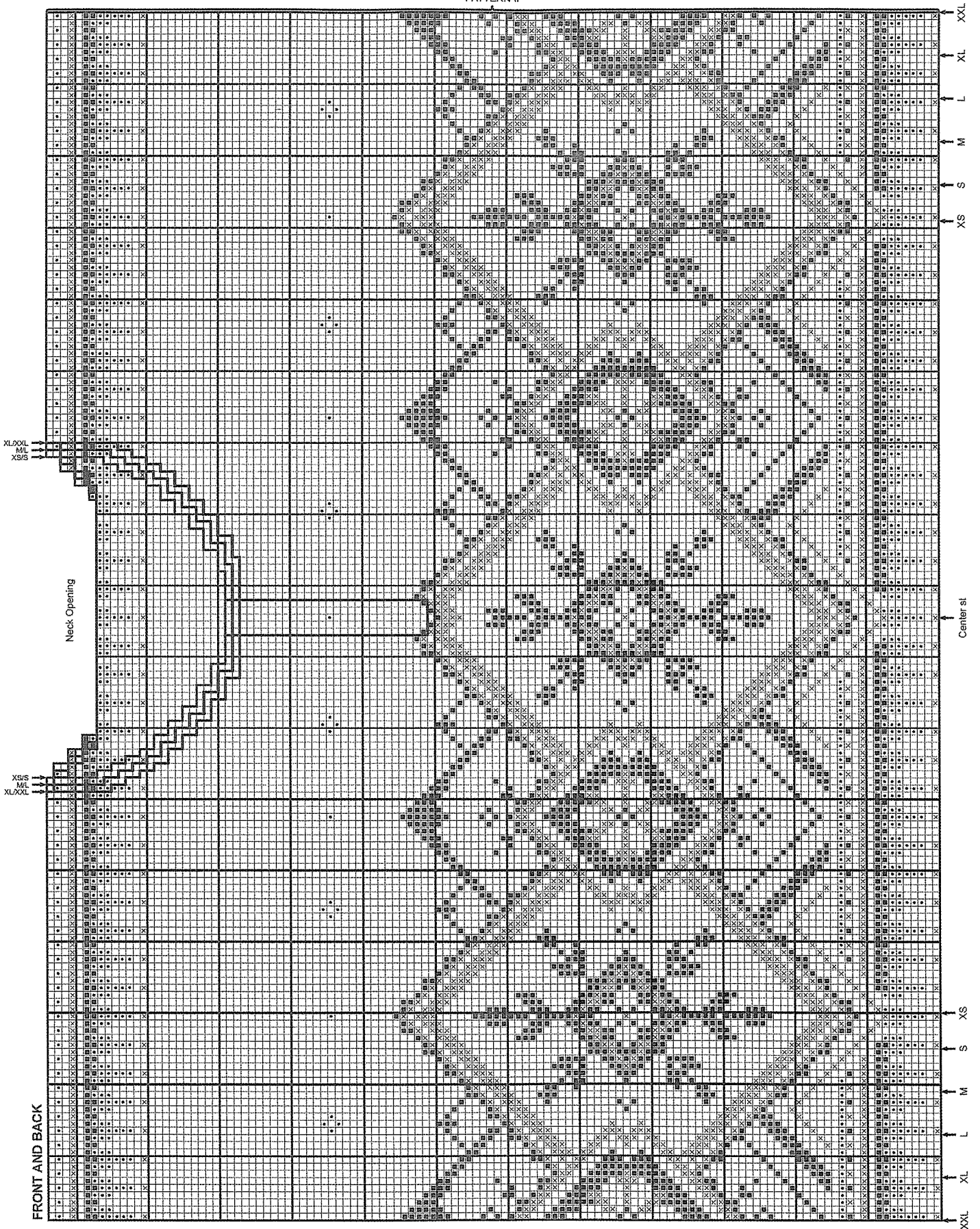
BODY: With smallest cir needle and MC, C O 222/242/266/290/314/338 sts. Join and, working in the rnd, mark beg of rnd and work 7⁷/₈"(2cm) of k1, p1 rib. Next rnd, work first 2 sts, yo, k2tog, work rib to last 4 sts, k2tog, yo, then work rem 2 sts. Cont rib until body measures 1¹/₈"(3cm) from bottom edge. Work 3³/₈"(1cm) of St st, then p 1 rnd for fold line. Change to middle size cir needle and place side markers at the beg of rnd and after 111/121/133/145/157/169 sts. Work Pattern I, beg each size as shown on right-hand side of graph and work to marker, then beg again at right-hand side of graph as before and work to end of rnd. Beg St st with MC and work until body measures approx 8¹/₂"(9¹/₄", 10", 10⁷/₈", 11⁵/₈", 12³/₈")/21.5cm (23.5cm, 25.5cm, 27.5cm, 29.5cm, 31.5cm) from fold line. Change to largest size cir needle. Work Pattern II, beg each size as shown on graph and work to marker, then beg again at right-hand side of graph and work to end of rnd to make pattern on front and back symmetrical. Cont through rnd 71 [**Note:** On pattern rnds 8-10, 12, and 14-15, work with color(s) most prominent in those rnds only, then add additional color(s) with Duplicate St embroidery when body is complete].

PLACKET OPENING: Next rnd, work first 53/58/64/70/76/82 sts as set, C OFF the next 5 sts for placket opening, then work to end of rnd (217/237/261/285/309/333 sts). Next rnd, C O 3 new sts over C OFF sts of previous rnd (these are cutting sts; work in background color throughout and exclude from st counts). Cont as set through rnd 99/99/98/98/97/97 of pattern (**Note:** Change to middle size cir needle on rnd 76, then change back to largest size cir needle on row 111 of pattern).

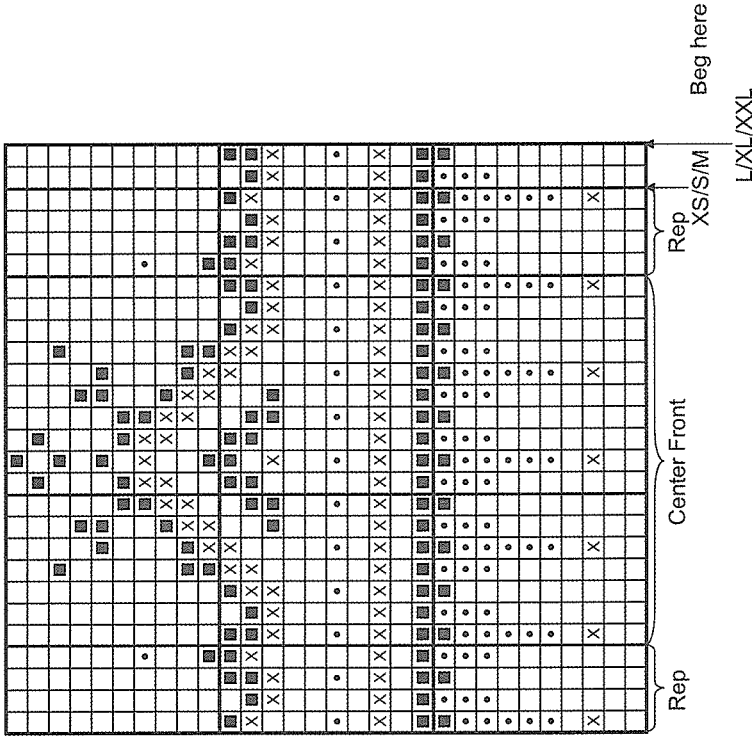
FRONT NECK OPENING: Work first 49/54/59/65/70/76 sts, C OFF the next 11/11/13/13/15/15 sts for front neck opening (the 3 cutting sts, plus 4/4/5/5/6/6 sts on either side), then work to end of rnd (209/229/251/275/297/321 sts). Cut yarn and slip left front shoulder sts from left needle to right needle. Reattach yarn and, working back and forth over entire body, beg rows at front neck edges. Cont pattern and C OFF 3 sts at the beg of next 4 rows, 2 sts at the beg of next 6 rows, then dec 1 st at the beg and end of every other row 4 times. AT THE SAME TIME, when 7 rows of pattern rem, shape back neck opening.

BACK NECK OPENING: Cont pattern and any rem front neck shaping, work front sts and first 39/44/49/55/60/66 sts of back, C OFF the next 33/33/35/35/37/37 sts for back neck opening, then work to end of row. Working each side of body separately, cont pattern and C OFF every other row at back neck edge, 2 sts 3 times (66/76/86/98/108/120 sts). When pattern is complete, p 1

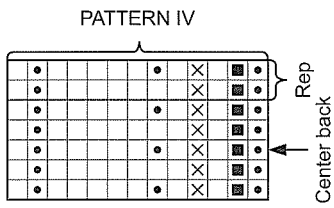
PATTERN II



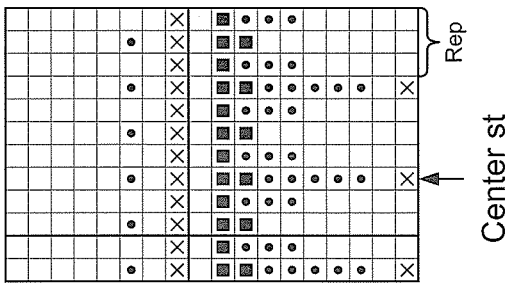
CAP PATTERN



NECKBAND

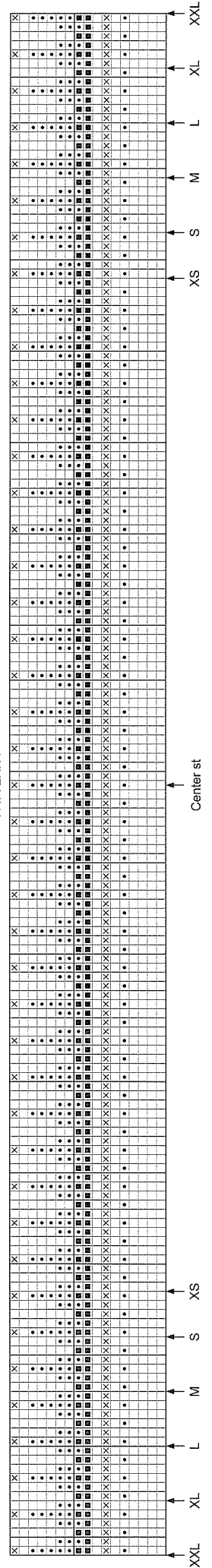


PATTERN III



- ☐ = MC = barn red 4137/lt sheep heather 2931
- ⊗ = CC1 = off white 0017/barn red 4137
- = CC2 = black 0090/black 0090
- ◻ = CC3 = goldenrod 2427/ochre 2434

PATTERN I



row on RS (or k 1 row on WS), then C OFF. Complete other side of body to match, placing back neck shaping on opposite side.

SLEEVES: With smallest dp needles and MC, C O 50/50/54/54/58/58 sts. Join and, working in the rnd, mark beg of rnd and work 1½" (3cm) of k1, p1 rib. K 3 rnds, then p 1 rnd for fold line. Change to middle size dp needles and work Pattern I, placing center st of graph at center of sleeve and inc 5 sts evenly spaced across first rnd (55/55/59/59/63/63 sts). Beg St st with MC and, AT THE SAME TIME, inc 1 st at the beg and end of every fourth rnd 28/29/30/30/31/32 times, then every other rnd 2/3/2/4/3/4 times, leaving 2 sts between inc sts. In the meantime, when sleeve measures approx 16½" (17", 17¾", 17¾", 18½", 18½")/41cm (43cm, 44cm, 45cm, 46cm, 47cm) from fold line, work Pattern I in reverse order (from rnd 17 to rnd 1), placing center st of graph at center of sleeve and work rem inc as set (115/119/123/127/131/135 sts). P 5 rnds with MC, then C OFF loosely. Make second sleeve to match.

FINISHING: Lay body and sleeves out to finished measurements and steam lightly; do not steam ribs. Fold lower edges of body and sleeves to inside along fold lines and sew loosely to WS, leaving an opening at lower right side of body to insert shock cord. Lay sleeves flat and measure width at top of sleeves below facings. Mark this width on each side of body from shoulders down for armholes. Sew 2 machine seams, 2 sts out from where side markers were placed and across bottom of the 4 sts for armhole openings, and along both sides of cutting sts at front placket opening. Cut between the pairs of machine stitching, being careful not to cut stitching at bottom of armholes. Sew front and back tog at shoulders as shown on page 1. Thread blunt tapestry needle with appropriate colors and work Duplicate St embroidery on front and back.

NECKBAND: With smallest cir needle, MC and with RS facing, pick up 12 sts per 2" (5cm) along neck edge using a crochet hook ½-metric size smaller than needles to pick up an odd number of sts k-wise. Working back and forth, beg with a WS row and work Pattern IV, placing center st of graph at center back of neck. P 1 row on RS for fold line. Work 1½" (4cm) of k1, p1 rib, then C OFF loosely in rib.

PLACKETS: With smaller dp or cir needles, MC and with RS facing, pick up sts along one side of placket opening, 1 st in on body side from machine seams, and end of neckband to fold line in same manner as neckband. Working back and forth, change to CC3. Beg with a WS row and p 1 row. Change to CC2 and k 1 row. Change to MC and p 1 row. P 1 row on RS for fold line. Work 3 rows of St st, then C OFF loosely. Work placket along other side of placket opening to match. Fold plackets to inside along fold lines, covering cut edges, then sew neatly to WS. Neat sew ends of placket closed, and lower ends to C OFF edge at beg of placket opening, with fold lines meeting at center of opening.

ZIPPER: Pin zipper into placket opening, placing top of zipper just below neckband fold line, and with edges of plackets meeting at center of zipper. Neatly sew zipper to body along placket pick up rows. Thread shock cord through stopper, then through casing at bottom of body, beg both ends at left side. Securely sew ends of cord tog. Slip cord under casing, then sew rem opening closed. Fold neckband to inside along fold line and sew loosely to WS. Sew ends of neckband to back of zipper tape, making sure zipper will slide past edges of neckband. Pin sleeves into armholes, placing center sts of sleeves at shoulder seams, then neatly sew sleeves to body as shown on page 1. On inside, turn facings toward body, covering cut edges, then loosely sew facings to WS.

CAP

SIZES: XS/S/M L/XL/XXL

With smallest cir needle and MC, C O 120/132 sts. Join and, working in the rnd, mark beg of rnd and beg rnds at center back. Work 9 rnds of k1, p1 rib. K 2 rnds, then p 1 rnd for fold line and inc 1 st at end of rnd (121/133 sts). Change to middle size cir needle. Set Cap Pattern across next rnd in this manner: Beg each size at right-hand side of graph as shown, work 4-st rep 13/14 times, work 17 sts of Center Front, then work 4-st rep to

end of rnd. (**Note:** For rnds 22, 23 and 25-30, k with MC only, then add pattern at center front with Duplicate St Embroidery when cap is complete. For rnd 24, work pattern with MC and CC1, then duplicate st CC2 and CC3 when complete.) Cont St st with MC until cap measures 6¾" (7¼")/17cm (18.5cm) from fold line and dec 1 st at end of last rnd (120/132 sts).

SHAPING: Change to middle size dp needles. Next rnd, * k 4 sts, k2tog; rep from * to end of rnd (100/110 sts). K 5 rnds without dec. Next rnd, * k 3 sts, k2tog; rep from * to end of rnd (80/88 sts). K 3 rnds without dec. Next rnd, * k 2 sts, k2tog; rep from * to end of rnd (60/66 sts). K 2 rnds without dec. K2tog across next rnd, then gather rem 30/33 sts on a piece of yarn and fasten securely.

FINISHING: Thread blunt tapestry needle with appropriate colors and work Duplicate St embroidery at center front. Fold lower edge of cap to inside along fold line, then sew loosely to WS. Make 2 tassels with all colors held tog, each approx 2¾" (7cm) long. Make a twisted cord with MC for Colorway I, or CC3 for Colorway II, approx 5½" (14cm) long. Securely attach a tassel to each end of cord, then securely sew center of cord to top of cap.



Mt. Robson 2003 Pullover & Cap
Heilo or Falk, XS - XXL

Colorways, from left to right:
J, light sheep heather/black; and
B, barn red/off white





Lake Louise 2001 Pullover,
Cap & Headband
Heilo or Falk, XS - XXL

Colorways, (above) from left to right:
B, off white/norwegian blue;
A, natural/barn red

Right, sleeve detail





Le Massif 20034 Pullover & Cap
Heilo or Falk, XS - XXL

Above, sleeve detail

Colorways, clockwise from upper left:
H, norwegian blue/off white;
F, black/natural; and
E, grey heather/off white



Whistler 2005 Pullover & Cap

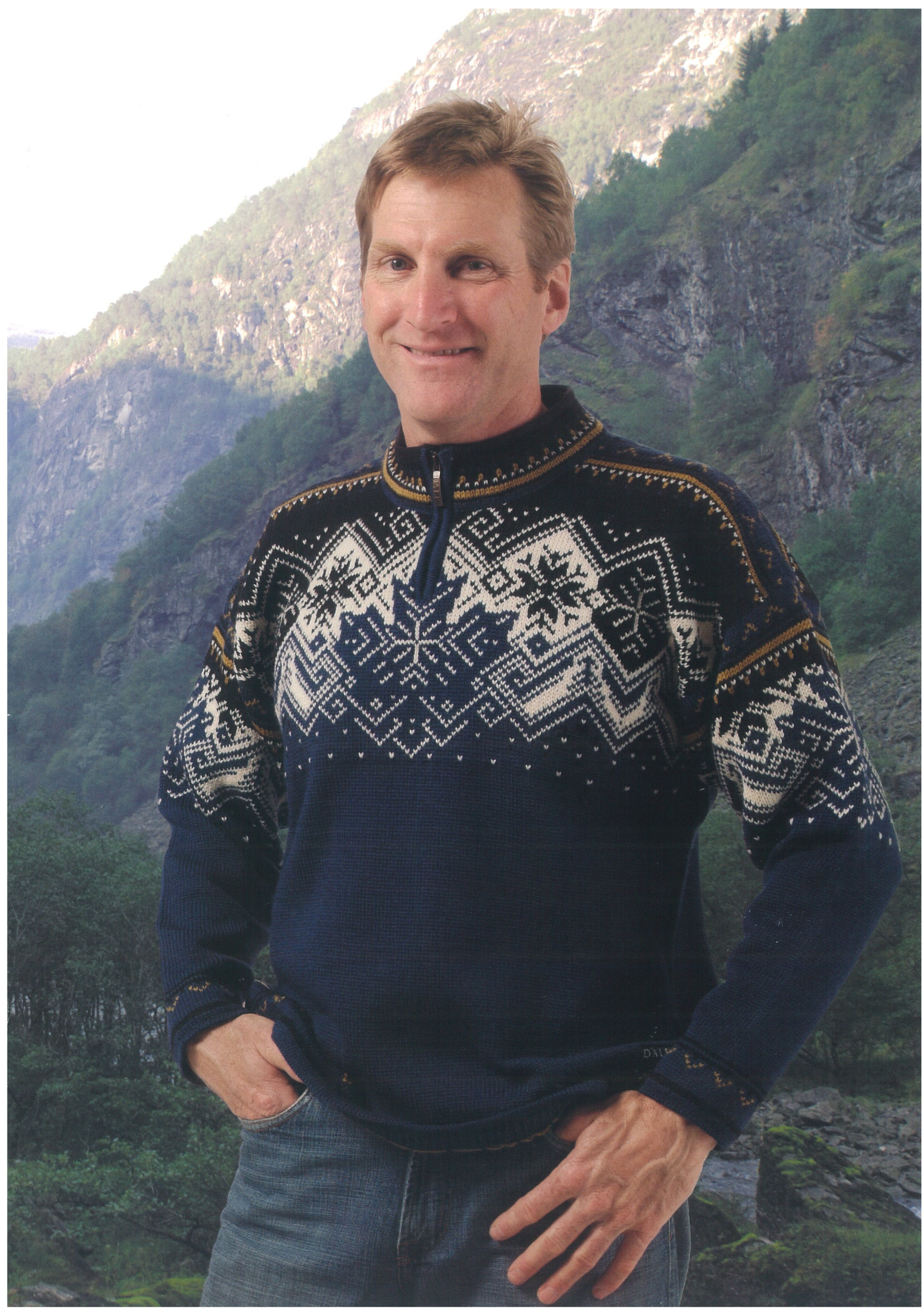
Heilo or Falk, XS - XXL

Colorways, from left to right:

B, black/barn red;

H, norwegian blue/black





Notre Dame 2002,
Colorway F
Heilo or Falk, XS - XXL

0280-8301 © 2003 • 1st Edition • Photography: Dale photo archive and Jeff Clarke Photography • Models: Kelly Lewis, Jill Lewis, Jim Mix • Printing: ecolor Printing, Inc.



Dale of Norway

Dale of Norway, Inc.
4750 Shelburne Rd., Suite 20
Shelburne, VT 05482
Telephone: 802-383-0132 • Fax: 802-383-0133
www.daleofnorway.com