

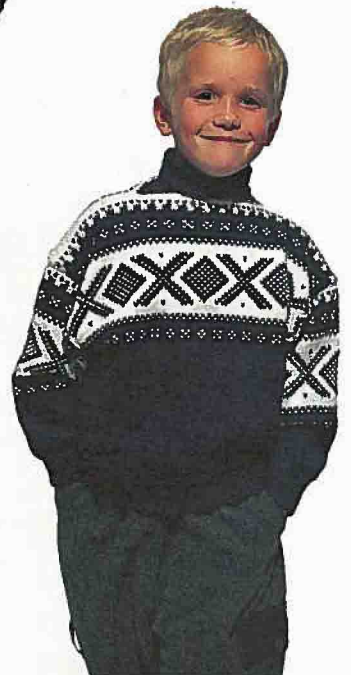
DALE

OFFISIELLE OL-GENSERE
1956-1994

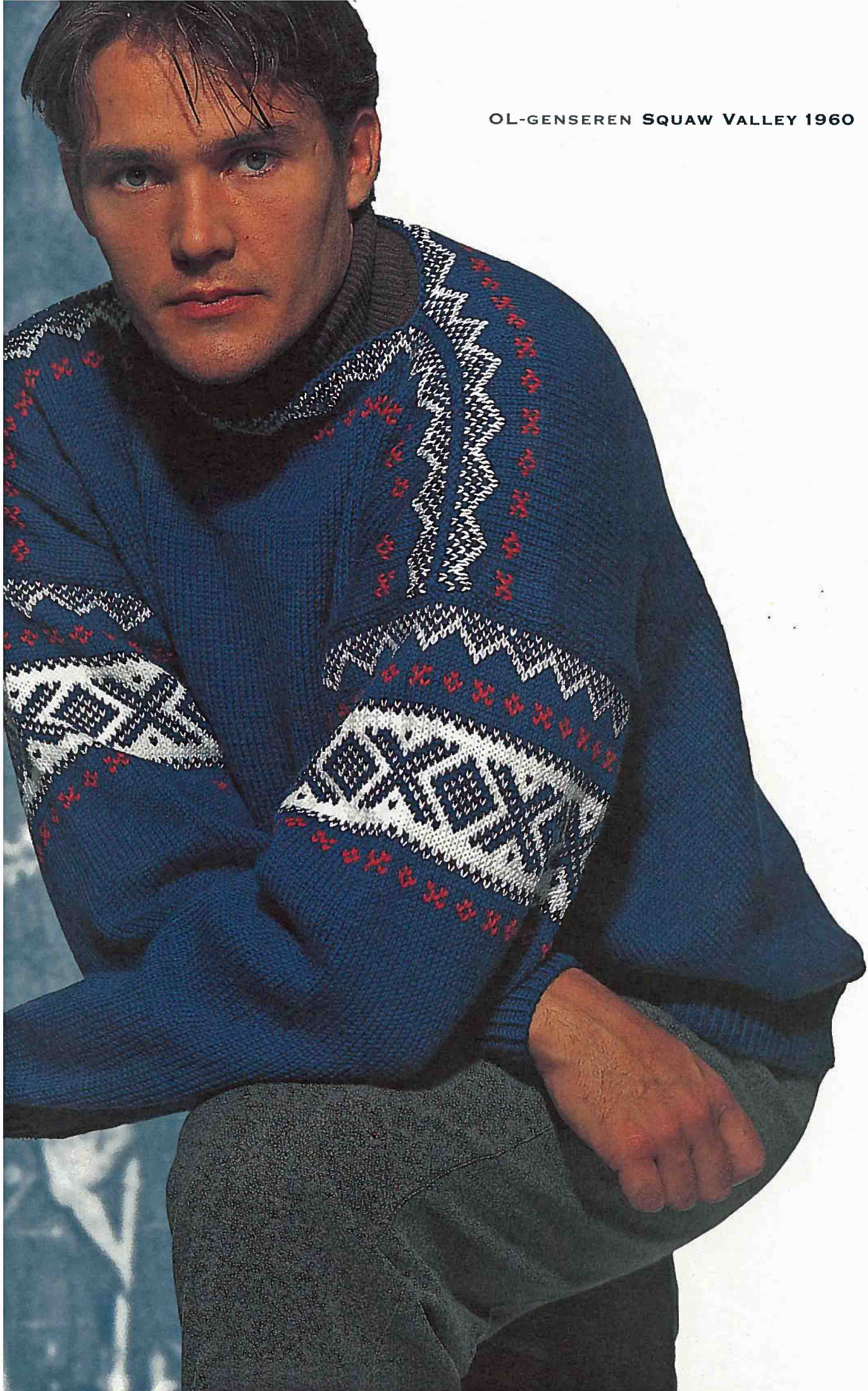


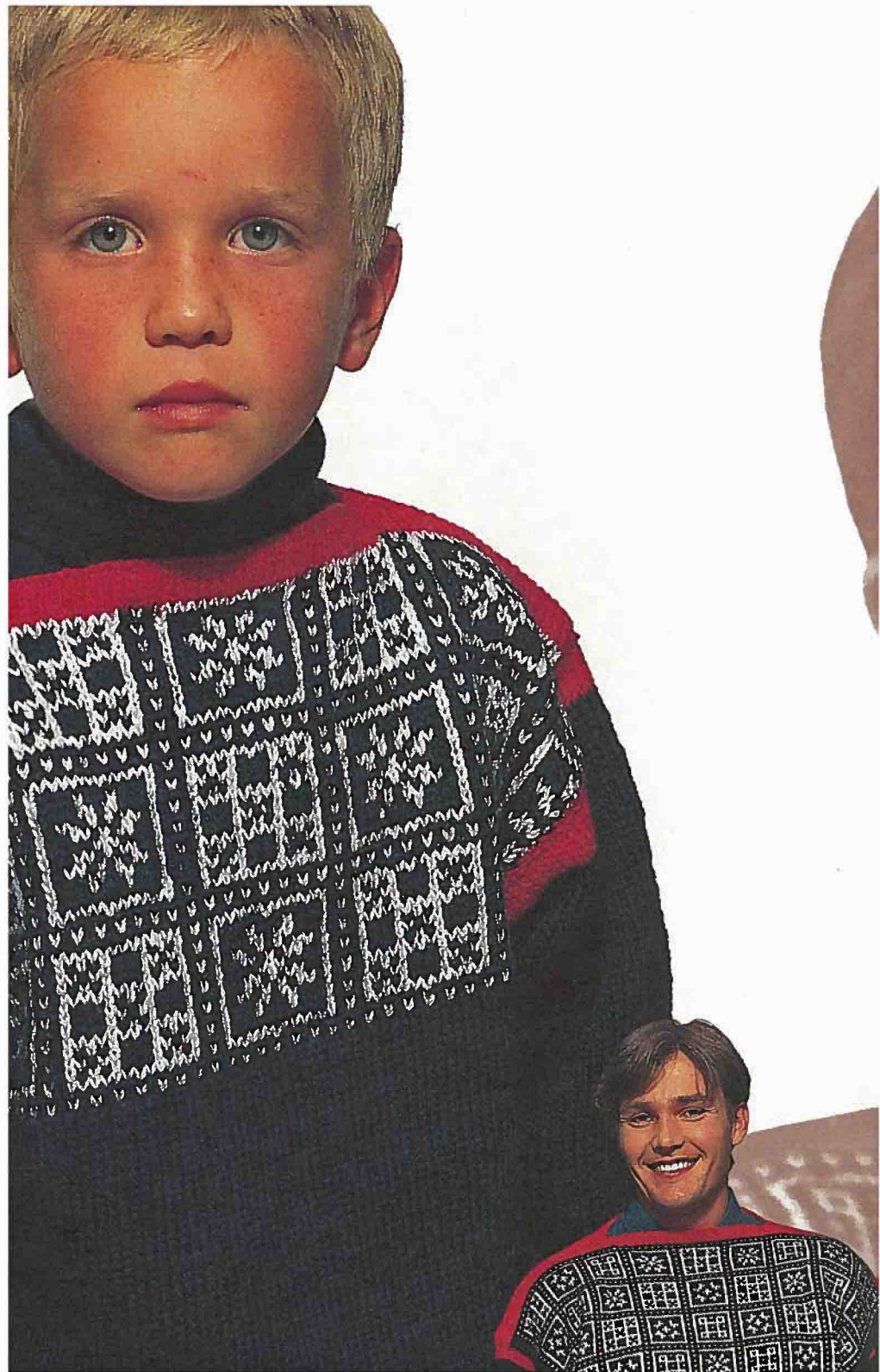
DALEGARN

OL-GENSEREN CORTINA 1956



OL-GENSEREN SQUAW VALLEY 1960





ABBREVIATIONS

beg = beginning
 CC = contrast color
 ch = chain
 cir = circular
 C OFF = cast off (bind off/BO)
 C O = cast on
 cont = continue
 cr h = crochet hook
 cm = centimeter
 dc = double crochet
 dec = decrease
 dp = double pointed
 gr = gram
 g st = garter stitch = knit all rows
 inc = increase
 K = knit
 kn = knitting needle
 K 2 tog = knit 2 together
 K wise = knitwise = as if you were knitting
 M1 = make one = inc by knitting one st in row below
 MC = main color
 mm = millimeter

P = purl
 P wise = purlwise = as if you were purling
 P 2 tog = purl 2 together
 psso = pass slip stitch over
 R(s) = row(s)
 rnd(s) = round(s)
 rem = remain(ing)
 rep = repeat
 rib = ribbing
 RS = right side
 sc = single crochet
 sk = skip
 sl st = slip stitch
 st(s) = stitch(es)
 st st = stockinette stitch
 str = straight
 sl = slip stitch without knitting
 tbl = through back loop
 trc = triple crochet
 WS = wrong side
 yo = yarn over





Please read the following before you begin:

It's important to maintain correct gauge because the finished measurements and shape of your garment are completely dependent on gauge. If you knit looser than the given gauge, change to smaller needles. If you knit tighter, change to larger needles.

Wool is a natural fiber from sheep. Garments knit with pure, new wool have body and elasticity, curl very little, absorb moisture well and hold in warmth. Because of the risk of matting and felting, wool garments should be washed gently with plenty of water and a mild, neutral detergent.

WASHING INSTRUCTIONS:	Hand Wash	Machine Wash	Fabric Softener	Tumble Dry
Dale Baby Ull		40°C	No	No
Daletta		40°C	No	No
Falk		40°C	No	No
Freestyle		30°C	No	No
Heilo	30°C		Yes	No
Kolibri		40°C	Yes	No
Tiur	30°C		No	No

These symbols apply to all yarn qualities:

				30°C = 92°F
Gentle cycle spin	Steam lightly with steam	Dry Clean with perchlorethylene using normal methods	Do not bleach	40°C = 112°F

The patterns in this book have been developed and tested by our design division. Every effort has been made to make the knitting directions in this book as accurate as possible. However, we cannot be responsible for variations due to individual knitters, human error or typographical mistakes.

Copyright 1999, Dale of Norway, Inc. First edition. All rights reserved. No portion of this book may be copied, leased, resold or otherwise distributed without the written permission of Dale of Norway, Inc. For further information write: Dale of Norway, N16 W23390 Stoneridge Drive, Suite A, Waukesha, WI 53188. Patterns in Dalegarn's books are printed on recycled paper.

HEILO/FALK CORTINA 1956



ADULT'S AND CHILD'S PULLOVER

MATERIALS: Heilo or Falk

ADULT SIZES:	XS	S	M	L	XL
Main Color: navy 5563	650	700	750	800	850 gr
Contrast Color: off-white 0017	200	200	250	250	250 gr

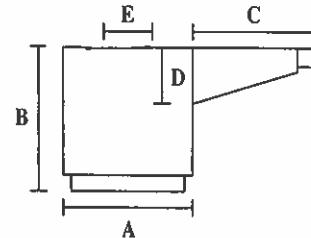
CHILD'S SIZES:	6	8	10 yrs
Main Color: navy 5563	300	350	400 gr
Contrast Color: off-white 0017	150	150	150 gr

SUGGESTED NEEDLE SIZES: Cir and dp needles in US size 2(2.5mm), 3(3mm) and 4(3.5mm). Adjust needle sizes as needed to obtain the correct gauge.

GAUGE: 24 sts and 28 rnds of pattern or 30 rnds of st st = 4"(10cm) x 4"(10cm)

ADULT PULLOVER

FINISHED MEASUREMENTS:



- A = Chest Width:** 21⁵/₈"(23¹/₄", 24", 24³/₄", 26³/₈")/55cm(59cm, 61cm, 63cm, 67cm)
B = Body Length: 25¹/₄"(26", 26³/₄", 27⁵/₈", 28³/₈")/64cm(66cm, 68cm, 70cm, 72cm)
C = Sleeve Length: 17³/₈"(18¹/₂", 19¹/₄", 20¹/₈", 20¹/₂")/45cm(47cm, 49cm, 51cm, 52cm)
D = Armhole Depth: 9⁷/₈"(10¹/₄", 10³/₈", 11", 11¹/₈")/25cm(26cm, 27cm, 28cm, 29cm)
E = Neck Opening Width: 7¹/₈"(7¹/₈", 8¹/₄", 8⁵/₈", 8⁵/₈")/20cm(20cm, 21cm, 22cm, 22cm)

Watch gauge carefully to obtain the correct finished measurements!

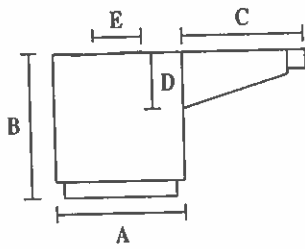
BODY: With MC and cir needle in US size 2(2.5mm), C O 240/256/264/272/288 sts. Join, and working in the rnd, work K 1, P 1 rib for 2"(5cm). Inc 26/30/30/30/34 sts evenly spaced on last rnd of rib (266/286/294/302/322 sts). Change to cir needle in US size 3(3mm) and beg st st, working until body measures 17³/₈"(45cm)/18¹/₂"(47cm)/19¹/₄"(49cm)/20¹/₈"(51cm)/20⁷/₈"(53cm) from bottom of rib. Place side markers at beg of rnd and after 133/143/147/151/161 sts and change to cir needle in US size 4(3.5mm). Work Pattern; beg each size as shown on graph, work to marker, then beg again as shown to make pattern on front and back symmetrical. P 1 rnd with CC, K 5 rnds for facing, then C OFF.

SLEEVES: With MC and dp needles in US size 2(2.5mm), C O 46/48/50/52/54 sts. Join, and working in the rnd, work rib same as body. Inc 21/21/21/23/23 sts evenly spaced on last rnd of rib (67/69/71/75/77 sts). Change to dp needles in US size 3(3mm) and beg st st. **AT THE SAME TIME,** beg inc 1 st at beg and end of every fourth rnd 25 times for all sizes, then every fifth rnd 2/3/4/5/6 times, leaving 2 sts between inc sts (121/125/129/135/139 sts). Work until sleeve measures 10¹/₄"(26cm)/11"(28cm)/11³/₄"(30cm)/12³/₈"(32cm)/13"(33cm) from bottom of rib. Change to dp needles in US size 4(3.5mm) and work Pattern, placing center st of graph at center of sleeve. P 5 rnds with CC for facing, then C OFF. Make second sleeve to match.

FINISHING: Finish body and sleeves, except for shoulder seams, following instructions on page 2. Sew each shoulder tog from RS through P rnd leaving approx 7¹/₈"(20cm)/7¹/₈"(20cm)/8¹/₄"(21cm)/8⁵/₈"(22cm)/8⁵/₈"(22cm) open at center of body for neck opening. Fold top edge of body to inside at P rnd and sew neatly to WS.

CHILD'S PULLOVER

FINISHED MEASUREMENTS:



- A = Chest Width: 16 1/8" (17 3/4", 18 7/8") / 41cm (45cm, 48cm)
- B = Body Length: 17 3/4" (19 1/4", 21 1/4") / 45cm (49cm, 54cm)
- C = Sleeve Length: 13 3/8" (14 1/2", 15 3/8") / 34cm (37cm, 39cm)
- D = Armhole Depth: 7 7/8" (8 5/8", 9") / 20cm (22cm, 23cm)
- E = Neck Opening Width: 5 7/8" (6 1/4", 7 1/8") / 15cm (16cm, 18cm)

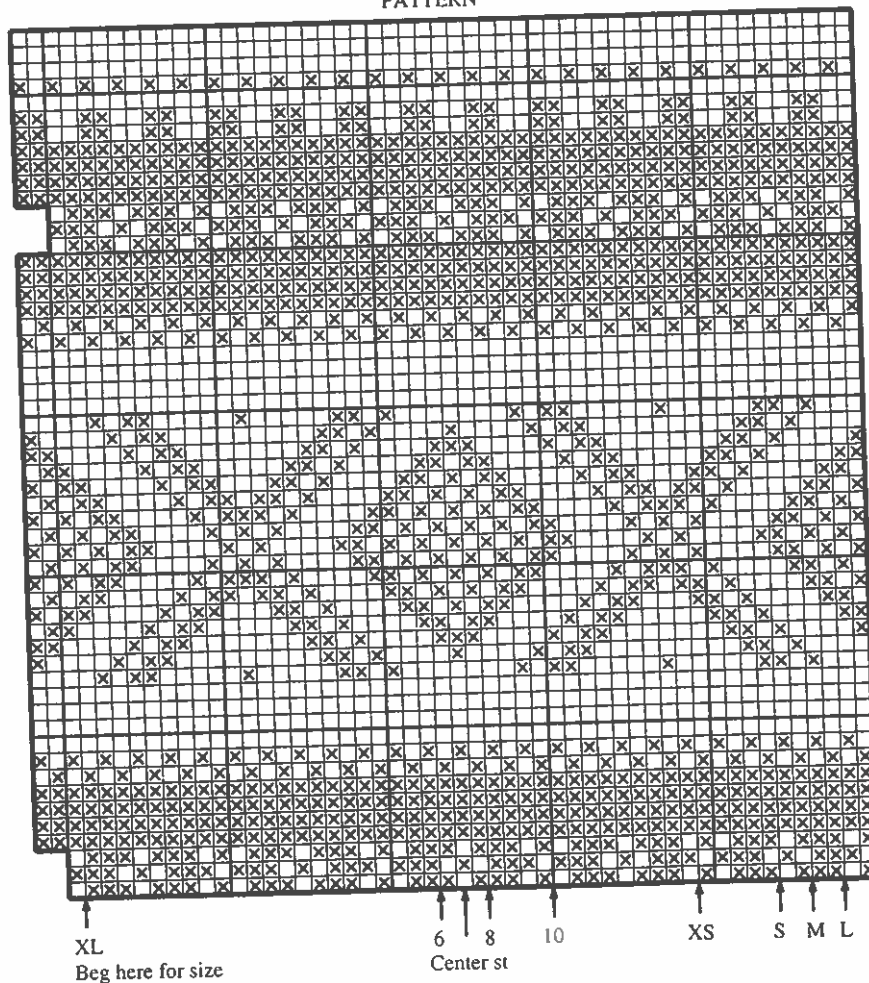
Watch gauge carefully to obtain the correct finished measurements!

BODY: With MC and cir needle in US size 2(2.5mm), C O 178/190/206 sts. Join, and working in the rnd, work K 1, P 1 rib for 2"(5cm). Change to cir needle in US size 3(3mm) and beg st st. Inc 24 sts evenly spaced on first rnd (202/214/230 sts). Cont until body measures 10 1/4"(26cm)/ 11 3/4"(30cm)/13 3/4"(35cm) from bottom of rib. Place side markers at beg of rnd and after 101/107/115 sts and change to cir needle in US size 4(3.5mm). Work Pattern; beg each size as shown on graph, work to marker, then beg again as shown to make pattern on front and back symmetrical. When Pattern is complete, body should measure 17 3/4"(45cm)/ 19 1/4"(49cm)/21 1/4"(54cm) from bottom of rib. P 1 rnd with CC, K 5 rnds for facing, then C OFF.

SLEEVES: With MC and dp needles in US size 2(2.5mm), C O 42/44/46 sts. Join, and working in the rnd, work rib same as body. Inc 15/17/17 sts evenly spaced on last rnd of rib (57/61/63 sts). Change to dp needles in US size 3(3mm) and beg st st. AT THE SAME TIME, beg inc 1 st at beg and end of every fourth rnd, 20/22/24 times, leaving 2 sts between inc sts (97/ 105/111 sts). Work until sleeve measures 5 7/8"(15cm)/7 1/8"(18cm)/ 7 7/8"(20cm) from bottom of rib. Change to dp needles in US size 4(3.5mm) and work Pattern, placing center st of graph at center of sleeve. P 5 rnds with CC for facing, then C OFF. Make second sleeve to match.

FINISHING: Finish body and sleeves same as adult pullover, leaving approx 5 7/8"(15cm)/6 1/4"(16cm)/7 1/8"(18cm) open at center of body for neck opening.

PATTERN



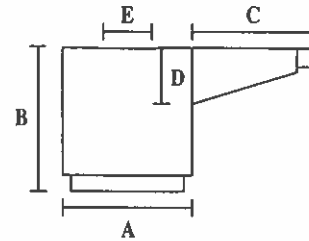
- ☒ = MC = navy 5563
- ☐ = CC = off-white 0017

HEILO/FALK SQUAW VALLEY 1960



ADULT'S PULLOVER

FINISHED MEASUREMENTS:



ADULT'S AND CHILD'S PULLOVER

MATERIALS: Heilo or Falk

ADULT SIZES:	XS	S	M	L	XL
--------------	----	---	---	---	----

Main Color:	700	750	800	850	900 gr
norwegian blue 5744					
Contrast Color 1:	50	50	50	50	50 gr
cherry red 4018					
Contrast Color 2:	100	100	100	100	100 gr
off-white 0017					

CHILD'S SIZES:	6	8	10 yrs
----------------	---	---	--------

Main Color:	400	450	500 gr
norwegian blue 5744			
Contrast Color 1:	50	50	50 gr
cherry red 4018			
Contrast Color 2:	50	50	100 gr
off-white 0017			

SUGGESTED NEEDLE SIZES: Cir and dp needles in US sizes 2(2.5mm), 3(3mm), and 4(3.5mm). Adjust needle sizes as needed to obtain the correct gauge.

GAUGE: 24 sts and 28 rnds of pattern or 30 rnds of st st = 4"(10cm) x 4"(10cm)

- A** = Chest Width: 21⁵/₈"(23¹/₄", 24", 24³/₄", 26³/₈")/55cm(59cm, 61cm, 63cm, 67cm)
B = Body Length: 25¹/₄"(26", 26³/₄", 27⁵/₈", 28³/₈")/64cm(66cm, 68cm, 70cm, 72cm)
C = Sleeve Length: 17³/₈"(18¹/₂", 19¹/₄", 20¹/₈", 20¹/₂")/45cm(47cm, 49cm, 51cm, 52cm)
D = Armhole Depth: 9⁷/₈"(10¹/₄", 10⁵/₈", 11", 11³/₈")/25cm(26cm, 27cm, 28cm, 29cm)
E = Neck Opening Width: 7¹/₈"(7¹/₈", 8¹/₄", 8⁵/₈", 8⁵/₈")/20cm(20cm, 21cm, 22cm, 22cm)

Watch gauge carefully to obtain the correct finished measurements!

BODY: With MC and cir needle in US size 2(2.5mm), C O 242/256/264/272/288 sts. Join, and working in the rnd, work K 1, P 1 rib for 2"(5cm). Inc 24/30/30/30/34 sts evenly spaced on last rnd of rib (266/286/294/302/322 sts). Change to cir needle in US size 3(3mm) and work in st st until body measures 23¹/₄"(59cm)/24"(61cm)/24³/₄"(63cm)/25⁵/₈"(65cm)/26³/₈"(67cm) from bottom of rib. Place side markers at beg of rnd and after 133/143/147/151/161 sts and change to cir needle in US size 4(3.5mm). Work Pattern II; beg each size as shown on graph, work to marker then beg again as shown to make pattern on front and back symmetrical. K 1 rnd with MC, P 1 rnd, K 5 rnds for facing, then C OFF.

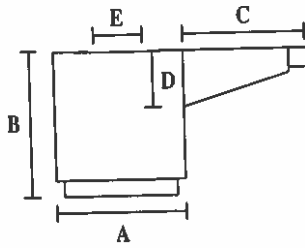
SLEEVES: With MC and dp needles in US size 2(2.5mm), C O 46/48/50/50/52 sts. Join, and working in the rnd, work K 1, P 1 rib for 2"(5cm). Inc 21/21/21/23/23 sts evenly spaced on last rnd of rib (67/69/71/73/75 sts). Change to dp needles in US size 3(3mm) and beg st st. AT THE SAME TIME, beg inc 1 st at beg and end of every fourth rnd 28/29/30/31/33 times, leaving 2 sts between inc sts (123/127/131/135/141 sts). Work until sleeve measures 11³/₈"(29cm)/12¹/₄"(31cm)/13"(33cm)/13³/₄"(35cm)/14¹/₈"(36cm) from bottom of rib. Change to cir needle in US size 4(3.5mm) and work Pattern I, then Pattern II, placing center st of graph at center of sleeve. When Patterns are complete, K 1 rnd with MC, P 5 rnds for facing, then C OFF. Make second sleeve to match.

FINISHING: Finish body and sleeves, except for shoulder seams, following instructions on page 2. Sew each shoulder seam tog from RS through P rnd leaving approx 7¹/₈"(20cm)/7¹/₈"(20cm)/8¹/₄"(21cm)/8⁵/₈"(22cm)/8⁵/₈"(22cm) open at center of body for neck opening. Fold top edge of body to inside at P rnd and sew neatly to WS.

CHILD'S PULLOVER

Watch gauge carefully to obtain the correct finished measurements!

FINISHED MEASUREMENTS:

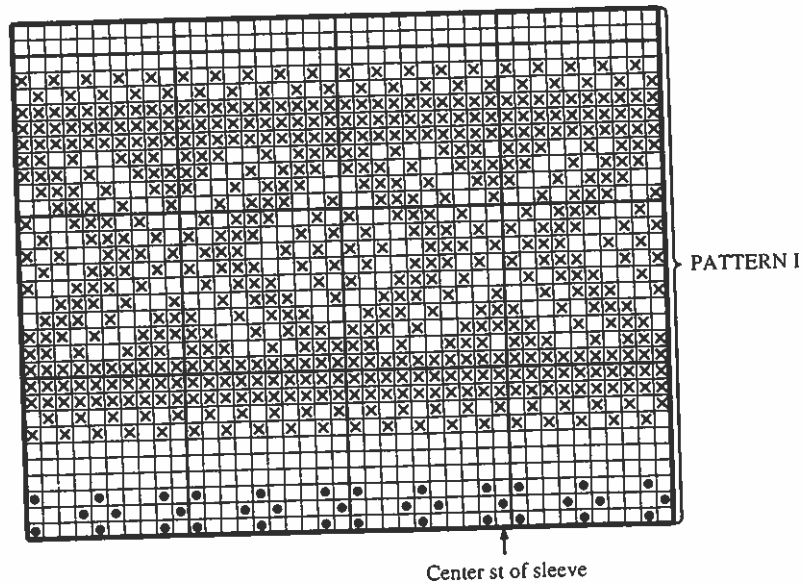
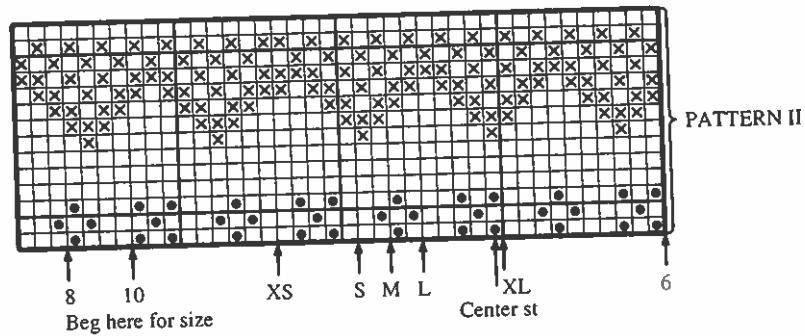


- A = Chest Width: 16¹/₈"(17³/₈", 18⁷/₈")/41cm(45cm, 48cm)
- B = Body Length: 17³/₈"(19¹/₄", 21¹/₄")/45cm(49cm, 54cm)
- C = Sleeve Length: 13³/₈"(14¹/₂", 15³/₈")/34cm(37cm, 39cm)
- D = Armhole Depth: 7⁷/₈"(8⁵/₈", 9")/20cm(22cm, 23cm)
- E = Neck Opening Width: 5⁷/₈"(6¹/₄", 7¹/₈")/15cm(16cm, 18cm)

BODY: With MC and cir needle in US size 2(2.5mm), C O 178/190/206 sts. Join, and working in the rnd, work K 1, P 1 rib for 2"(5cm). Inc 24 sts evenly spaced on last rnd of rib (202/214/230 sts). Change to cir needle in US size 3(3mm) and beg st st, working until body measures 15³/₈"(40cm)/17³/₈"(44cm)/19¹/₄"(49cm). Place side markers at beg of rnd and after 101/107/115 sts. Change to cir needle in US size 4(3.5mm) and work Pattern II. P 1 rnd with MC, K 5 rnds for facing, then C OFF.

SLEEVES: With MC and dp needles in US size 2(2.5mm), C O 42/44/46 sts. Join, and working in the rnd, work K 1, P 1 rib same as body. Change to dp needles in US size 3(3mm), beg st st and inc 15/17/17 sts evenly spaced on first rnd (57/61/63 sts). AT THE SAME TIME, beg inc 1 st at beg and end of every fourth rnd 20/21/23 times, leaving 2 sts between inc sts (97/103/109 sts). Work until sleeve measures approx 6⁷/₈"(17.5cm)/8"(20.5cm)/8⁷/₈"(22.5cm) from bottom of rib. Change to dp needles in US size 4(3.5mm) and work Pattern I, then Pattern II, placing center st of graph at center of sleeve. When Patterns are complete, K 1 rnd with MC, P 5 rnds for facing, then C OFF.

FINISHING: Finish body and sleeves same as adult pullover, leaving approx 5⁷/₈"(15cm)/6¹/₄"(16cm)/7¹/₈"(18cm) open at center of body for neck opening.



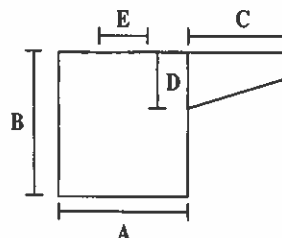
- = MC = norwegian blue 5744
- = CC1 = cherry red 4018
- ⊗ = CC2 = off-white 0017

HEILO/FALK INNSBRUCK 1964



ADULT PULLOVER

FINISHED MEASUREMENTS:



ADULT'S AND CHILD'S PULLOVER

MATERIALS: Heilo or Falk

ADULT SIZES:	XS	S	M	L	XL
Main Color:	700	750	800	850	900 gr
deepest navy 5582					
Contrast Color 1:	100	100	100	150	150 gr
off-white 0017					
Contrast Color 2:	50	50	50	50	50 gr
cherry red 4018					

CHILD'S SIZES:	6	8	10 yrs
Main Color:	350	400	450 gr
deepest navy 5582			
Contrast Color 1:	50	100	100 gr
off-white 0017			
Contrast Color 2:	50	50	50 gr
cherry red 4018			

SUGGESTED NEEDLE SIZES: Cir and dp needles in US size 2(2.5mm), 3(3mm) and 4(3.5mm). Adjust needle sizes as needed to obtain the correct gauge.

GAUGE: 24 sts and 28 rnds of pattern or 30 rnds of st st = 4"(10cm) x 4"(10cm)

A = Chest Width: 22"(23¼", 24¾", 25½", 26¾")/56cm(59cm, 63cm, 65cm, 67cm)

B = Body Length: 25¼"(26", 26¾", 27½", 28¾")/64cm(66cm, 68cm, 70cm, 72cm)

C = Sleeve Length: 17¾"(18½", 19¼", 20½", 20½")/45cm(47cm, 49cm, 51cm, 52cm)

D = Armhole Depth: 9⅞"(10¼", 10½", 11", 11½")/25cm(26cm, 27cm, 28cm, 29cm)

E = Neck Opening Width: 7⅞"(7⅞", 8¼", 8½", 8½")/20cm(20cm, 21cm, 22cm, 22cm)

Watch gauge carefully to obtain the correct finished measurements!

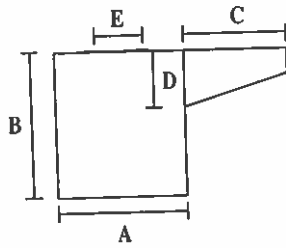
BODY: With MC and cir needle in US size 2(2.5mm), C O 240/256/264/272/288 sts. Join, and working in the rnd, work 2"(5cm) of K 1, P 1 rib. Inc 30/30/38/38/34 sts evenly spaced on last rnd of rib (270/286/302/310/322 sts). Change to cir needle in US size 3(3mm) and work in st st until body measures 13"(33cm)/13¾"(35cm)/14½"(37cm)/15½"(39cm)/16½"(41cm) from bottom of rib. Place side markers at beg of rnd and after 135/143/151/155/161 sts and change to cir needle in US size 4(3.5mm). * K 2/6/2/4/7 sts in MC, work Pattern I as shown on graph, K 2/6/2/4/7 sts in MC, end at marker, then repeat from * to complete rnd. Complete Pattern I, then K 1 rnd with MC. Change to CC2, K 5 rnds, P 1 rnd, K 5 rnds for facing, then C OFF.

SLEEVES: With MC and dp needles in US size 2(2.5mm), C O 46/48/50/50/52 sts. Join, and working in the rnd, make rib same as body and inc 21/21/21/23/23 sts evenly spaced on last rnd of rib (67/69/71/73/75 sts). Change to dp needles in US size 3(3mm) and beg st st. AT THE SAME TIME, beg inc 1 st at beg and end of every fourth rnd 23/24/24/24/25 times, then every fifth rnd 4/4/5/6/7 times, leaving 2 sts between inc sts (121/125/129/135/139 sts). Cont until sleeve measures 17"(43cm)/17¾"(45cm)/18½"(47cm)/19¼"(49cm)/19¾"(50cm) from bottom of rib. Change to CC2, K 5 rnds, P 5 rnds for facing, then C OFF. Make second sleeve to match.

FINISHING: Finish body and sleeves, except for shoulder seams, following instructions on page 2. Sew each shoulder tog from RS through P rnd leaving approx 7⅞"(20cm)/7⅞"(20cm)/8¼"(21cm)/8½"(22cm)/8½"(22cm) open at center of body for neck opening. Fold top edge of body to inside at P rnd and sew neatly to WS.

CHILD'S PULLOVER

FINISHED MEASUREMENTS:



- A = Chest Width: 16¹/₈" (17³/₈", 18⁷/₈")/41cm (45cm, 48cm)
 B = Body Length: 17³/₈" (19¹/₄", 21¹/₄")/45cm (49cm, 54cm)
 C = Sleeve Length: 13³/₈" (14¹/₂", 15³/₈")/34cm (37cm, 39cm)
 D = Armhole Depth: 7¹/₈" (8⁵/₈", 9")/20cm (22cm, 23cm)
 E = Neck Opening Width: 5⁷/₈" (6¹/₄", 7¹/₈")/15cm (16cm, 18cm)

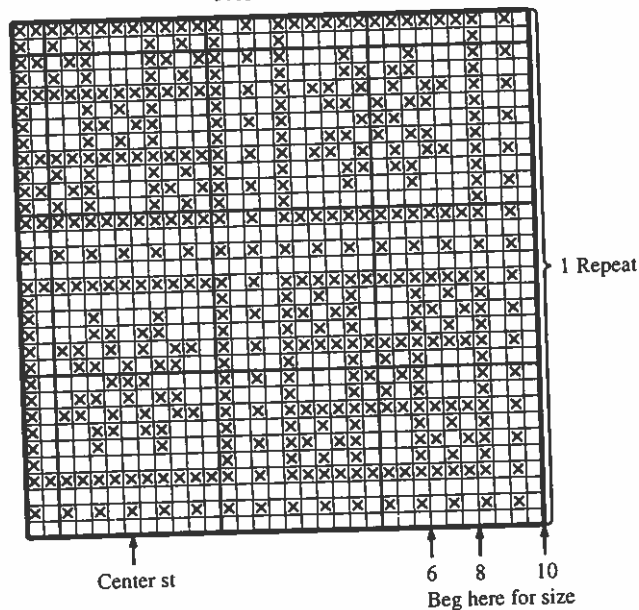
Watch gauge carefully to obtain the correct finished measurements!

BODY: With MC and cir needle in US size 2(2.5mm), C O 178/190/206 sts. Join, and working in the rnd, work K 1, P 1 rib for 1⁵/₈"(4cm)/2"(5cm)/2"(5cm). Change to cir needle in US size 3(3mm) and beg st st. Inc 24 sts evenly spaced on first rnd of st st (202/214/230 sts) and place side markers at beg of rnd and after 101/107/115 sts. Cont until body measures 10¹/₄"(26cm)/11¹/₄"(30cm)/13³/₄" (35cm) from bottom of rib. Change to cir needle in US size 4(3.5mm) and work Pattern II; beg each size as shown on graph, work to marker then beg again as shown to make pattern on front and back symmetrical. Work 1 1/2 rep of Pattern II for sizes 6/8 yrs and 2 rep for size 10 yrs. K 1 rnd with MC. Change to CC2 and K 5 rnds, P 1 rnd, K 5 rnds for facing, then C OFF.

SLEEVES: With MC and dp needles in US size 2(2.5mm), C O 42/44/46 sts. Join, and working in the rnd, make rib same as body. Change to dp needles in US size 3(3mm), beg st st and inc 15/17/17 sts evenly spaced on first rnd (57/61/63 sts). AT THE SAME TIME, beg inc 1 st at beg and end of every fourth rnd 19/22/24 times, leaving 2 sts between inc sts (95/105/111 sts). Work until sleeve measures 12⁵/₈"(32cm)/13³/₄"(35cm)/14¹/₂"(37cm) from bottom of rib. Change to CC2 and K 5 rnds, P 5 rnds for facing, then C OFF. Make second sleeve to match.

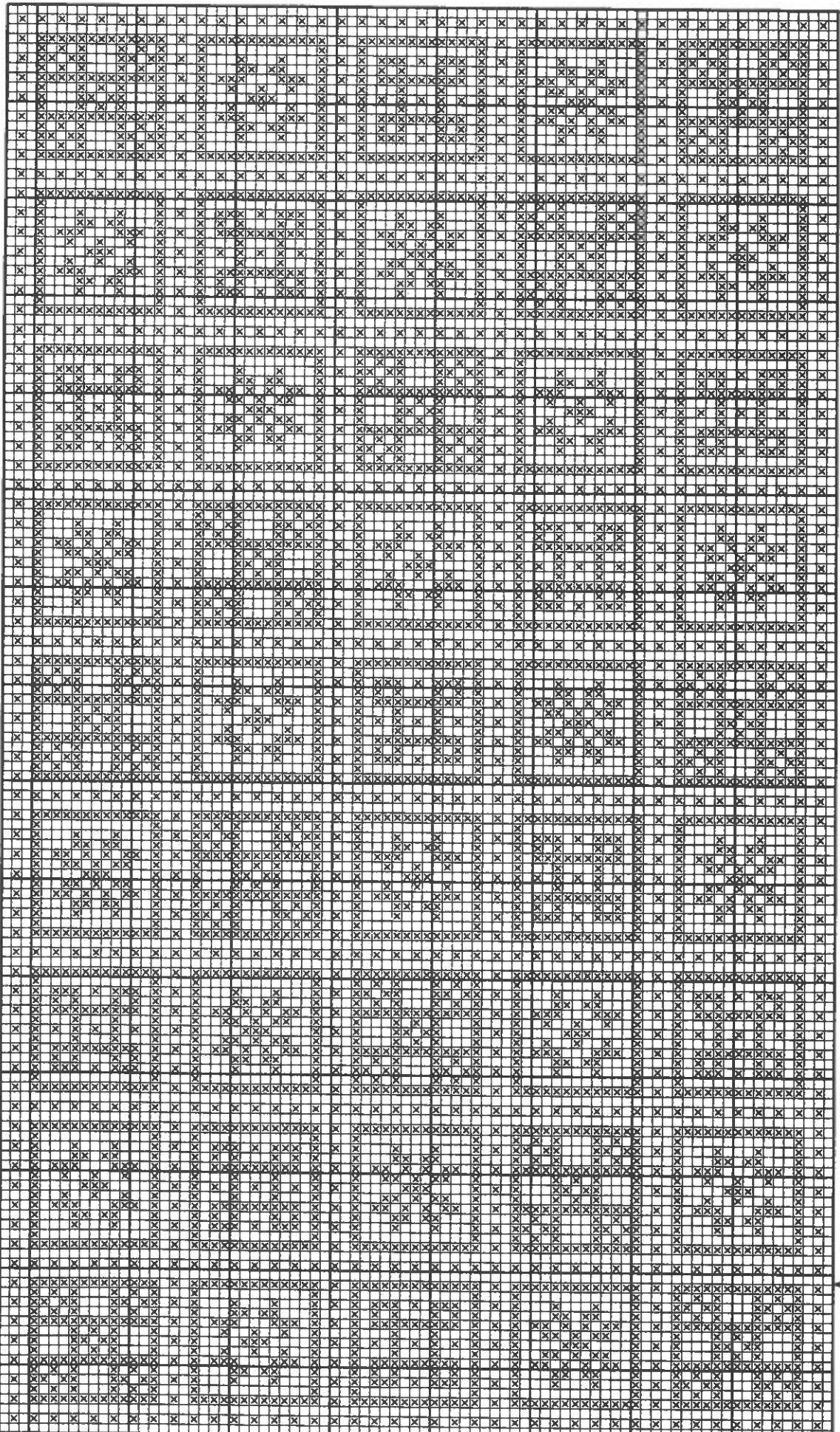
FINISHING: Finish body and sleeves same as adult pullover, leaving approx 5⁷/₈"(15cm)/6¹/₄"(16cm)/7¹/₈"(18cm) open at center of body for neck opening.

PATTERN II



- = MC = deepest navy 5582
 ⊗ = CC1 = off-white 0017

PATTERN I



XS-S-M-L-XL
Beg here for size

☐ = MC = deepest navy 5582
☒ = CC1 = off-white 0017

XS-S

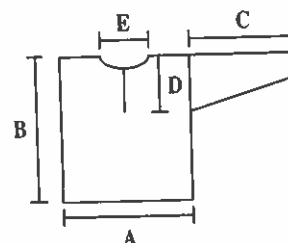
M-L-XL
End here for size

HEILO/FALK GRENOBLE 1968

ADULT PULLOVER



FINISHED MEASUREMENTS:



ADULT'S AND CHILD'S PULLOVER

MATERIALS: Heilo or Falk

ADULT SIZES:	S	M	L
Main Color:	700	750	800 gr
natural 0020/navy 5563			
Contrast Color 1:	250	300	300 gr
navy 5563/natural 0020			
Contrast Color 2:	50	50	50 gr
soft blue 5943/soft blue 5943			

CHILD'S SIZES:	6	8	10 yrs
Main Color:	500	550	600 gr
natural 0020/navy 5563			
Contrast Color 1:	150	200	200 gr
navy 5563/natural 0020			
Contrast Color 2:	50	50	50 gr
soft blue 5943/soft blue 5943			
Contrast Color 3:Remnants or			
cherry red 4018/cherry red 4018			

SUGGESTED NEEDLE SIZES: Cir and dp needles in US size 2(2.5mm) and 3(3mm) or 4(3.5mm). Adjust needle sizes as needed to obtain the correct gauge.

GAUGE: 24 sts and 28 rnds of pattern, or 30 rnds of st st = 4"(10cm) x 4"(10cm)

ACCESSORIES: Adult Pullover, 3 pair of clasps and 1/4 yds(110cm) each of 1"(2.5cm) wide woven navy tape, and 3/8"(1cm) wide red tape. Child's Pullover, 2 pair of clasps.

- A = Chest Width: 22 1/2"(23 3/8", 24 3/4")/57cm(60cm, 63cm)
 B = Body Length: 26"(26 3/4", 27 1/8")/66cm(68cm, 70cm)
 C = Sleeve Length: 19 1/4"(19 3/4", 20 1/8")/49cm(50cm, 51cm)
 D = Armhole Depth: 10 1/4"(10 5/8", 11")/26cm(27cm, 28cm)
 E = Neck Opening Width: 7 1/2"(7 1/8", 8 1/4")/19cm(20cm, 21cm)

Watch gauge carefully to obtain the correct finished measurements!

Picot rnd: * K2tog, yo, rep from * to end of rnd.

BODY: With MC and cir needle in US size 2(2.5mm), C O 254/272/290 sts. Join, and working in the rnd, K 5 rnds, 1 Picot rnd, then K 5 rnds. Inc 16 sts evenly spaced on last rnd (270/288/306 sts). Change to cir needle in US size 3(3mm) or 4(3.5mm) and work Pattern I, Pattern II, then Main Pattern until body measures 15"(38cm)/15 3/4"(40cm)/16 1/2"(42cm) from Picot rnd, ending with 2 rnds of MC. Work Pattern II, then Pattern I and place side markers at beg of rnd and after 135/144/153 sts; for size M, inc 1 st after each marker. Work Pattern III; beg each size as shown on graph, work to marker, then beg again as shown to make pattern on front and back symmetrical. Work Pattern I, and AT THE SAME TIME, beg front neck opening.

FRONT NECK OPENING: C OFF the center 27/29/31 sts of front for neck opening. Working back and forth, beg Rs at neck edge. Cont C OFF at beg of every R 3 sts twice, 2 sts 4 times, then 1 st 6 times. Work until 6 Rs of Pattern I rem.

BACK NECK OPENING: C OFF the center 41/43/45 sts of back for neck opening. Working each side of body separately, cont C OFF every other R at back neck edge 2 sts once, then 1 st once. Complete Pattern I, ending with a WS R. K 2 Rs with MC, then C OFF. Complete other side of body to match.

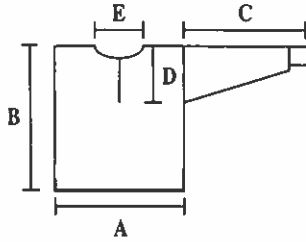
SLEEVES: With MC and dp needles in US size 2(2.5mm), C O 48/50/52 sts. Join, and working in the rnd, K 5 rnds, 1 Picot rnd, then K 5 rnds. Inc 15/17/19 sts evenly spaced on last rnd (63/67/71 sts). Change to dp needles in US size 3(3mm) or 4(3.5mm) and work Pattern I, then Pattern II, placing center st of graph at center of sleeve. AT THE SAME TIME, beg inc 1 st at beg and end of every fourth rnd 31/31/32 times, leaving 2 sts between inc sts (125/129/135 sts). Beg Main Pattern and work until sleeve measures approx 13 3/4"(35cm)/14 1/8"(36cm)/14 1/2"(37cm) from Picot rnd, ending with 2 rnds of MC. Work Pattern II, then Pattern III, placing center st of graph at center of sleeve. When Pattern III is complete, work first 4 rnds of Pattern I. Change to MC and K 1 rnd, P 5 rnds for facing, then C OFF. Make second sleeve to match.

FINISHING: Finish body and sleeves following instructions on page 2.
NECKBAND AND FRONT PLACKETS: With MC and cir needle in US size 2(2.5mm), pick up 125/127/131 sts along neck edge only, do not include sides of placket opening, using a crochet hook and method described on page 2. Work st st for 1 1/8"(3cm), and AT THE SAME TIME, dec 1 st, 3 sts in from beg and end of fourth and sixth Rs. Leaving sts on needle, pick up 24 sts per 4"(10cm) along ends of neckband and each side of placket opening with navy (CC1 or MC). Work 8 Rs of reverse st st, inc 1 st at each corner of neckband on first and third Rs, dec 1 st at each corner

of neckband on fifth and seventh Rs, then C OFF. Fold reverse st st part of edging in half to inside and sew neatly to WS, forming a "piped" edge along neck edge and placket opening. Sew woven tapes around neck and placket opening, mitering corners and turning under cut edges of trim at bottom of placket opening as shown in photo, making sure that knitted piping extends beyond edge of red tape. Sew 3 pair of clasps to placket opening as shown in photo.

CHILD'S PULLOVER

FINISHED MEASUREMENTS:



- A = Chest Width: 16¹/₈" (17³/₄", 18⁷/₈")/41cm (45cm, 48cm)
- B = Body Length: 17³/₄" (19¹/₄", 21¹/₄")/45cm (49cm, 54cm)
- C = Sleeve Length: 13³/₈" (14¹/₂", 15³/₈")/34cm (37cm, 39cm)
- D = Armhole Depth: 7¹/₈" (8³/₈", 9")/20cm (22cm, 23cm)
- E = Neck Opening Width: 5⁷/₈" (6¹/₄", 7¹/₈")/15cm (16cm, 18cm)

Watch gauge carefully to obtain the correct finished measurements!

Picot rnd: * K2tog, yo, rep from * to end of rnd.

BODY: With MC and cir needle in US size 2(2.5mm), C O 204/216/228 sts. Join, and working in the rnd, K 3 rnds, 1 Picot rnd, then K 3 rnds. Change to cir needle in US size 4(3.5mm) and place side markers at beg of rnd and after 102/108/114 sts. Work Pattern I, Pattern II, then beg Main Pattern and work until body measures approx 9⁷/₈" (25cm)/11¹/₈" (29cm)/13³/₈" (34cm) from Picot rnd, ending with 2 rnds MC. Work Pattern II, then C OFF the center 10 sts of front for placket opening. On next rnd, C O 10

new sts over C OFF sts and cont working in the rnd. Dec 1 st on front and back of body. Work Pattern III, beg each size as shown on graph, work to marker, then beg again as shown to make pattern on front and back symmetrical. When Pattern III is complete, work Pattern I, and AT THE SAME TIME, beg front neck opening.

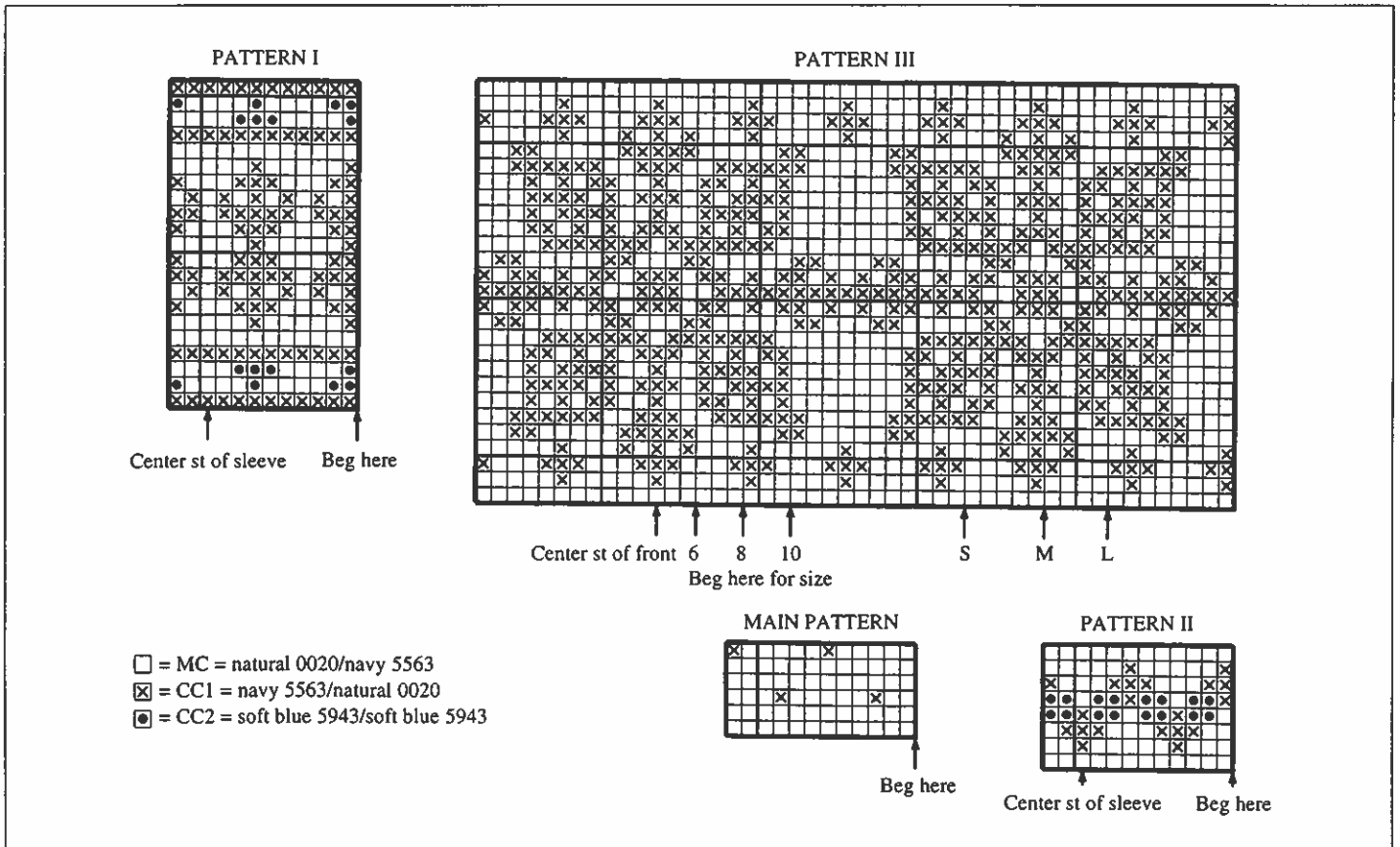
FRONT NECK OPENING: C OFF the center 11 sts of front for neck opening. Working back and forth, beg Rs at neck edge. Cont C OFF at beg of every R, 4/4/6 sts twice, 3 sts twice, 2 sts 4 times, then 1 st 4/6/6 times. When 8 Rs of Pattern I rem, beg back neck opening.

BACK NECK OPENING: C OFF the center 27/29/33 sts of back for neck opening. Working each side of body separately, cont C OFF at back neck edge every other R, 4 sts once, then 1 st once. Complete Pattern I, ending with a WS R. K 2 Rs with MC, then C OFF. Complete other side of body to match.

SLEEVES: With MC and dp needles in US size 2(2.5mm), C O 51/53/55 sts. Join, and working in the rnd, K 3 rnds, 1 Picot rnd, then K 3 rnds. Change to dp needles in US size 3(3mm) or 4(3.5mm) and work Pattern I, then Pattern II, placing center st of graph at center of sleeve. AT THE SAME TIME, beg inc 1 st at beg and end of every fourth rnd 22/20/20 times, then every third rnd 0/6/8 times, leaving 2 sts between inc sts (95/105/111 sts). Beg Main Pattern and work until sleeve measures 9¹/₂" (24cm)/10⁵/₈" (27cm)/11³/₈" (29cm) from Picot rnd, ending with 2 rnds of MC. Work Pattern II, then Pattern I. Change to MC and K 1 rnd, P 5 rnds for facing, then C OFF. Make second sleeve to match.

FINISHING: Finish body and sleeves following instructions on page 2. For placket opening, sew 2 machine seams along both sides of center 11 sts of front, beg at C OFF sts and sewing up to neck edge. Cut away the center 7 sts of placket opening, leaving 2 sts inside machine seams on both sides of opening.

NECKBAND AND FRONT PLACKETS: With navy (CC1 or MC) and cir needle in US size 2(2.5mm), pick up 24 sts per 4" (10cm) along neck edge and sides of placket opening, plus 1 extra st at both top corners of placket opening using a crochet hook and method described on page 2. Place markers at each extra corner st. Working back and forth, beg st st. Work 4 Rs of st st and inc 1 st on both sides of each corner st every other R. Change to CC3 and work 3 Rs of st st, ending with a WS R. Change to navy (CC1 or MC) and K 2 Rs. Work 9 Rs of st st, dec as for earlier inc, then C OFF. Fold neckband and placket to inside at P R and sew loosely to WS. Neatly sew ends of placket to body at center front C OFF sts. Sew 2 pair of clasps to placket opening as shown in photo.



HEILO/FALK SAPPORO 1972



ADULT'S AND CHILD'S CARDIGAN

MATERIALS: Heilo or Falk

ADULT SIZES:	S	M	L
Main Color:	600	650	700 gr
white 0010/white 0010			
Contrast Color:	500	550	600 gr
norwegian blue 5744/cherry red4018			

CHILD'S SIZES:	6	8	10 yrs
Main Color:	400	450	500 gr
white 0010/white 0010			
Contrast Color:	300	350	400 gr
norwegian blue 5744/cherry red4018			

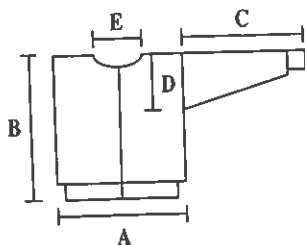
SUGGESTED NEEDLE SIZES: Cir and dp needles in US size 2(2.5mm) and 3(3mm) or 4(3.5mm). Adjust needle sizes as needed to obtain the correct gauge.

GAUGE: 24 sts and 28 rnds of pattern = 4"(10cm) x 4"(10cm)

ACCESSORIES: Adult, 7 pewter buttons; Child, 6 pewter buttons.

ADULT CARDIGAN

FINISHED MEASUREMENTS:



- A = Chest Width: 23⁵/₈"(23⁵/₈" , 25⁵/₈")/60cm(60cm, 65cm)
- B = Body Length: 26³/₄"(27⁵/₈" , 28³/₈")/68cm(70cm, 72cm)
- C = Sleeve Length: 18¹/₂"(19¹/₄" , 20¹/₈")/47cm(49cm, 51cm)
- D = Armhole Depth: 10³/₈"(11" , 11³/₈")/27cm(28cm, 29cm)
- E = Neck Opening Width: 7¹/₈"(8¹/₄" , 8³/₈")/20cm(21cm, 22cm)

Watch gauge carefully to obtain the correct finished measurements!

Rib Pattern: (Multiple of 4 sts)

R 1(RS): K 1, * K 2, P 2, rep from * to end of R, ending with K 3

R 2(WS): * P second st and leave on left needle, P first st and sl both sts to right needle, K 2, rep from * to last st, end K 1.

Repeat Rs 1-2.

BODY: With CC and cir needle in US size 2(2.5mm), C O 276/292/308 sts. Working back and forth, beg Rib Pattern: 3 Rs of CC, 14 Rs of MC, then 2 Rs of CC, after 7¹/₈"(2cm), make buttonhole over 3 sts, 4 sts in from beg or end of R (left or right side of front) using method described on page 2. Place first and last 12 sts of R onto st holders. Change to cir needle in US size 3(3mm) or 4(3.5mm). Beg with RS and CC, K 1 R and inc 33/17/25 sts evenly spaced on R (285/285/309 sts). C O 4 new sts at end of R; join, and working in the rnd, beg rnds at center front (new sts are cutting sts; work in MC every rnd and exclude from st counts). Work for 3 rnds: Pattern I once, Pattern II to last 5 sts of rnd, then mirror image of Pattern I. Cont in this manner: Pattern III once, Main Pattern to last 5 sts of rnd, then mirror image of Pattern III. Work until body measures approx 22⁷/₈"(58cm)/23⁵/₈"(60cm)/24³/₈"(62cm) from bottom of rib, ending after first or eleventh rnd of Main Pattern. Next rnd: work Pattern IV once, Pattern V to last 5 sts of rnd, then mirror image of Pattern IV. Attach a second ball of CC to end of rnd and use on eighth, ninth, twenty-first, and twenty-second rnds of Pattern IV to avoid need to float CC across entire rnd. Cont until 14 rnds of Patterns IV and V rem.

FRONT NECK OPENING: C OFF the 4 cutting sts at center front. Working back and forth, beg Rs at neck edge and C OFF 9/10/11 sts at beg of first 2 Rs. Cont C OFF at beg of every R, 3 sts 4 times, then 1 st 4 times. When 6 Rs of Patterns IV and V rem, beg back neck opening.

BACK NECK OPENING: C OFF the center 41/43/45 sts of back for neck opening. Working each side of body separately, cont C OFF every other R at back neck, 2 sts 1 once, then 1 st once. Complete Patterns IV and V, ending with a WS R. K 2 Rs with MC, then C OFF. Complete other side of body to match.

SLEEVES: With CC and dp needles in US size 2(2.5mm), C O 55/57/59 sts. Join, and working in the rnd, K 6 rnds, P 1 rnd, then K 1 rnd. Change to dp needles in US size 3(3mm) or 4(3.5mm) and work Pattern V, placing center st of graph at center of sleeve. AT THE SAME TIME, beg inc 1 st at beg and end of every third rnd 25 times for all sizes, then every fourth rnd 12/14/15 times, leaving 2 sts between inc sts (129/135/139 sts). Beg Main Pattern and work until sleeve measures 18¹/₈"(46cm)/18⁷/₈"(48cm)/19³/₄"(50cm) from P rnd. Work first 4 rnds of Pattern V. P 5 rnds with MC for facing, then C OFF.

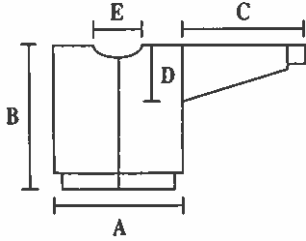
FINISHING: Finish body and sleeves following instructions on page 2.

BUTTON PLACKETS: Sl the 12 sts from st holder on side without buttonhole to dp needle in US size 2(2.5mm). With MC, C O 4 new sts, for facing, on edge that will be sewn to body. Work facing sts in reverse st st, and rem 12 sts in Rib Pattern. Work until placket is same length as front opening to neck edge when slightly stretched. C OFF the 4 facing sts and sl rem sts to st holder. Make placket on other side to match, working 5 buttonholes evenly spaced along length of placket (one additional buttonhole will be made in neckband). Sew plackets neatly to cardigan from RS, through first st of facing and first st inside machine seams on body. Neatly sew facings to WS over cut edges of opening and ends of facings to WS.

NECKBAND: With CC and cir needle in US size 2(2.5mm), pick up 130/134/138 sts along neck edge and placket sts from st holders using a crochet hook and method described on page 2. Working back and forth, work 4 Rs of Rib Pattern. Change to MC and cont Rib Pattern until neckband measures 2"(5cm), making buttonholes after 5¹/₈"(1.5cm) and 1³/₄"(4.5cm) of rib on same side of front as previous buttonholes. C OFF loosely. Fold neckband to inside along middle of rib, sew loosely to WS and neatly sew ends of neckband closed. Sew around buttonholes with buttonhole st and sew buttons to opposite placket under buttonholes.

CHILD'S CARDIGAN

FINISHED MEASUREMENTS:



- A = Chest Width: 16½" (18½", 20½")/42cm (47cm, 52cm)
 B = Body Length: 15" (18⅞", 22⅞")/38cm (48cm, 58cm)
 C = Sleeve Length: 11¾" (14⅞", 15¾")/30cm (36cm, 40cm)
 D = Armhole Depth: 7½" (8¼", 9")/19cm (21cm, 23cm)
 E = Neck Opening Width: 5½" (6¼", 7½")/14cm (17cm, 19cm)

Watch gauge carefully to obtain the correct finished measurements!

Rib Pattern: (Multiple of 4 sts)

- R 1(RS):** K 1, * K 2, P 2, rep from * to end of R, ending with K 3
R 2(WS): * P second st and leave on left needle, P first st and sl both sts to right needle, K 2, rep from * to last st, end K 1.
 Repeat Rs 1-2.

BODY: With CC and cir needle in US size 2(2.5mm), C O 212/238/262 sts. Working back and forth, beg Rib Pattern: 3 Rs of CC, 10 Rs of MC, then 2 Rs of CC; make buttonhole over 3 sts, 3 sts in from beg or end of R (left or right side of front opening) after ⅞" (2cm) using method described on page 2. Sl first and last 12 sts of R onto st holders (these will be worked later for button plackets). Change to cir needle in US size 3(3mm) or 4(3.5mm) and beg with RS, K 1 R and inc 1 st for size 6 yrs, dec 1 st for sizes 8/10 yrs. C O 4 new sts at end of R; join, and working in the rnd, beg rnds at center front (new sts are cutting sts; work in MC every rnd and exclude from st counts). Work for 3 rnds: Pattern I once, Pattern II to last 5 sts of rnd, then mirror image of Pattern I. Cont in this manner: Pattern III once, Main Pattern to last 5 sts of rnd, then mirror image of Pattern III. Work until body measures approx 11" (28cm)/15" (38cm)/18⅞" (48cm) from bottom of rib, ending after first or eleventh rnd of Main Pattern. Next rnd: work Pattern IV once, Pattern V to last 5 sts of rnd, then mirror image of Pattern IV. Attach a second ball of CC to end of rnd and use on eighth, ninth, twenty-first, and twenty-second rnds of Pattern IV to avoid need to float CC across entire rnd. Work until 14 rnds of Patterns IV and V rem.

FRONT NECK OPENING: C OFF the 4 cutting sts at center front. Working back and forth, beg Rs at neck edge. Cont C OFF at beg of every R 6/8/10 sts twice, 3/4/4 sts twice, 2 sts 4 times, then 1 st 6/8/8 times. When 5 Rs of Patterns IV and V rem, beg back neck opening.

BACK NECK OPENING: C OFF the center 25/31/35 sts of back for neck opening. Working each side of body separately, cont C OFF every other R at back neck edge, 3 sts once, then 1 st 1/2/2 times. Complete Patterns IV and V, ending with a WS R. K 2 Rs with MC, then C OFF. Complete other side of body to match.

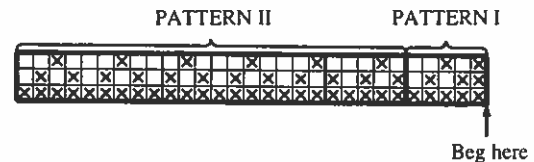
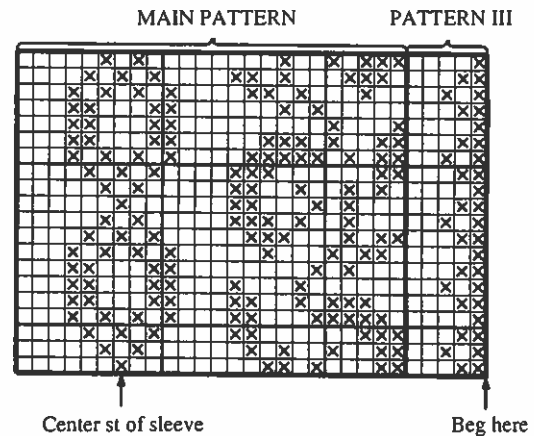
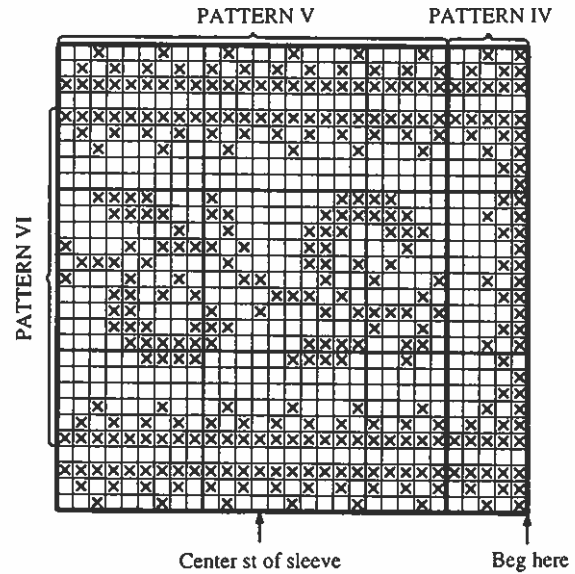
SLEEVES: With MC and dp needles in US size 2(2.5mm), C O 47/49/53 sts. Join, and working in the rnd, K 6 rnds, then P 1 rnd. Change to dp needles in US size 3(3mm) or 4(3.5mm) and K 1 rnd with CC. Work Pattern VI, then Main Pattern, placing center st of graph at center of sleeve. AT THE SAME TIME, beg inc 1 st at beg and end of every fourth rnd, then every third rnd 11/12/14 times, then every fourth rnd 0/1/0 times, leaving 2 sts between inc (91/99/109 sts). Work until sleeve measures 11⅜" (29cm)/13¾" (35cm)/15⅞" (39cm) from bottom of rib. Work first 4 rnds of Pattern V. K 1 rnd with MC, P 5 rnds for facing, then C OFF. Make second sleeve to match.

FINISHING: Finish body and sleeves following instructions on page 2.

BUTTON PLACKETS: Make button plackets same as adult cardigan.

NECKBAND: With CC and cir needle in US size 2(2.5mm), pick up 94/102/110 sts along neck edge and sts from holders using a crochet hook and

method described on page 2. Working back and forth, work 4 Rs Rib Pattern, change to MC and cont until neckband measures 2" (5cm), making buttonholes after ⅞" (1.5cm) and 1¾" (4.5cm) of rib on same side of front as previous buttonholes. C OFF loosely. Fold neckband to inside along middle of rib, sew loosely to WS and neatly sew ends of neckband closed. Sew around buttonholes with buttonhole st and sew buttons to opposite placket under buttonholes.



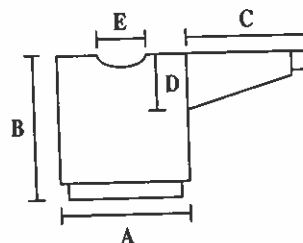
- = MC = white 0010/white 0010
 ⊗ = CC = norwegian blue 5744/cherry red 4018

HEILO/FALK INNSBRUCK 1976

ADULT PULLOVER



FINISHED MEASUREMENTS:



ADULT'S AND CHILD'S PULLOVER

MATERIALS: Heilo or Falk

ADULT SIZES:	XS	S	M	L	XL
Main Color: white 0010	450	500	550	600	650 gr
Contrast Color 1: norwegian blue 5744	250	250	300	300	350 gr
Contrast Color 2: sand gray 0004	200	200	250	250	300 gr

CHILD'S SIZES:	6	8	10 yrs
Main Color: white 0010	300	350	400 gr
Contrast Color 1: norwegian blue 5744	150	200	200 gr
Contrast Color 2: sand gray 0004	150	150	200 gr

SUGGESTED NEEDLE SIZES:

Cir and dp needles in US size 2(2.5mm) and 3(3mm) or 4(3.5mm). Adjust needle sizes as needed to obtain the correct gauge.

GAUGE: 24 sts and 28 rnds of pattern or 30 rnds of st st = 4"(10cm) x 4"(10cm)

- A = Chest Width: 21⁵/₈"(22⁷/₈",24",25¹/₄",26³/₈")/55cm(58cm,61cm,64cm,67cm)
 B = Body Length: 26"(26³/₄",27⁵/₈",28³/₈",28³/₄")/66cm(68cm,70cm,72cm,73cm)
 C = Sleeve Length: 18¹/₈"(18¹/₂",18⁷/₈",19³/₄",20¹/₈")/46cm(47cm,48cm,50cm,51cm)
 D = Armhole Depth: 10¹/₄"(10⁵/₈",11",11³/₈",11³/₈")/26cm(27cm,28cm,29cm,29cm)
 E = Neck Opening Width: 7¹/₂"(7¹/₂",7⁷/₈",8⁵/₈",8⁵/₈")/19cm(19cm,20cm,22cm,22cm)

Watch gauge carefully to obtain the correct finished measurements!

BODY: With CC1 and cir needle in US size 2(2.5mm), C O 230/244/250/264/278 sts. Join, and working in the rnd, work K 1, P 1 rib for 2"(5cm). Inc 36/36/44/44/44 sts evenly spaced on last rnd of rib (266/280/294/308/322 sts). Change to cir needle in US size 3(3mm) or 4(3.5mm), K 1 rnd, then work Pattern I, beg each size as shown on graph. Beg Main Pattern and work until body measures approx 16¹/₈"(41cm)/17"(43cm)/17³/₄"(45cm)/18¹/₂"(47cm)/18⁷/₈"(48cm) from bottom of rib, ending after fourth or eighth rnd of Main Pattern. Place side markers at beg of rnd and after 133/141/147/155/161 sts, and inc 1 st after both markers for sizes S and L. Work Pattern II, Pattern III, then Pattern IV; beg each size as shown on graph, work to marker, then beg again as shown to make patterns on front and back symmetrical. When Pattern IV is complete, beg Pattern I and work until body measures 23³/₄"(59cm)/24"(61cm)/24³/₄"(63cm)/25⁵/₈"(65cm)/26"(66cm) from bottom of rib.

FRONT NECK OPENING: C OFF the center 19/19/19/21/21 sts of front for neck opening. Working back and forth, beg Rs at neck edge, and cont Pattern I. Cont C OFF at beg of every R, 3/3/4/5/5 sts twice, 3 sts twice, 2 sts 4 times, then 1 st 6/6/8/8/8 times. Work until body measures 25¹/₄"(64cm)/26"(66cm)/26³/₄"(68cm)/27¹/₂"(70cm)/28"(71cm) from bottom of rib.

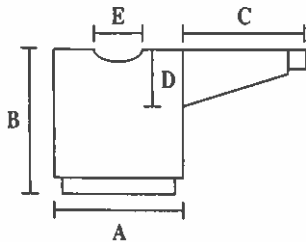
BACK NECK OPENING: C OFF the center 35/35/37/41/41 sts of back for neck opening. Working each side of the body separately, cont C OFF every other R at back neck edge 4 sts once, then 1 st 1/1/2/2/2 times. Complete Pattern I, then work 2 Rs of st st with MC, ending with a WS R. Change to CC1 and K 2 Rs, then C OFF. Complete other side of body to match.

SLEEVES: With CC1 and dp needles in US size 2(2.5mm), C O 44/46/48/50/50 sts. Join, and working in the rnd, work K 1, P 1 rib for 2³/₈"(6cm). Inc 25/25/27/27/27 sts evenly spaced on last rnd of rib (69/71/75/77/77 sts). Change to dp needles in US size 3(3mm) or 4(3.5mm) and K 1 rnd. Work Pattern I, placing center st of graph at center of sleeve. AT THE SAME TIME, beg inc 1 st at beg and end of every fourth rnd 27/28/29/30/30 times, leaving 2 sts between inc sts (123/127/133/137/137 sts). When Pattern I is complete, beg Main Pattern and work until sleeve measures approx 14¹/₈"(36cm)/14¹/₂"(37cm)/15"(38cm)/15³/₄"(40cm)/16¹/₈"(41cm) from bottom of rib, ending after fourth or eighth rnd of Main Pattern. Work Pattern II, K 2 rnds with MC, then work Pattern I. K 1 rnd with CC1, P 5 rnds for facing, then C OFF. Make second sleeve to match.

FINISHING: Finish body and sleeves following instructions on page 2.
NECKBAND: With CC1 and dp needles in US size 2(2.5mm), pick up 122/124/126/128/130 sts along neck edge using a crochet hook and method described on page 2. Join, and working in the rnd, work K 1, P 1 rib for 6¼"(16cm). C OFF loosely in rib. Fold neckband to outside along middle of rib.

CHILD'S PULLOVER

FINISHED MEASUREMENTS:



- A = Chest Width: 17¾"(18½",19¾")/44cm,(47cm,50cm)
- B = Body Length: 17¼"(19¼",21¼")/45cm(49cm,54cm)
- C = Sleeve Length: 13¾"(15",15¾")/34cm(38cm,40cm)
- D = Armhole Depth: 7⅞"(8¼",8⅞")/20cm(21cm,22cm)
- E = Neck Opening Width: 5⅞"(6¼",7⅞")/15cm(17cm,18cm)

Watch gauge carefully to obtain the correct finished measurements!

BODY: With CC1 and cir needle in US size 2(2.5mm), C O 186/200/214 sts. Join, and working in the rnd, work K 1, P 1 rib for 2"(5cm). Inc 24 sts evenly spaced on last rnd of rib (210/224/238 sts). Change to cir needle in US size 3(3mm) or 4(3.5mm) and K 1 rnd. Work Pattern I, beg each size as shown on graph. Beg Main Pattern and work until body measures approx 10⅞"(27cm)/12¼"(31cm)/14⅞"(36cm) from bottom of rib, ending after fourth or eighth rnd of Main Pattern; place side markers at beg of rnd and after 105/113/119 sts and inc 1 st after both markers for size 8 yrs. Work Pattern V, Pattern III, then Pattern V, beg each size as shown, work to marker, then beg again as shown to make patterns on front and back symmetrical. Work until body measures 15¾"(40cm)/17¾"(44cm)/18½"(47cm) from bottom of rib.

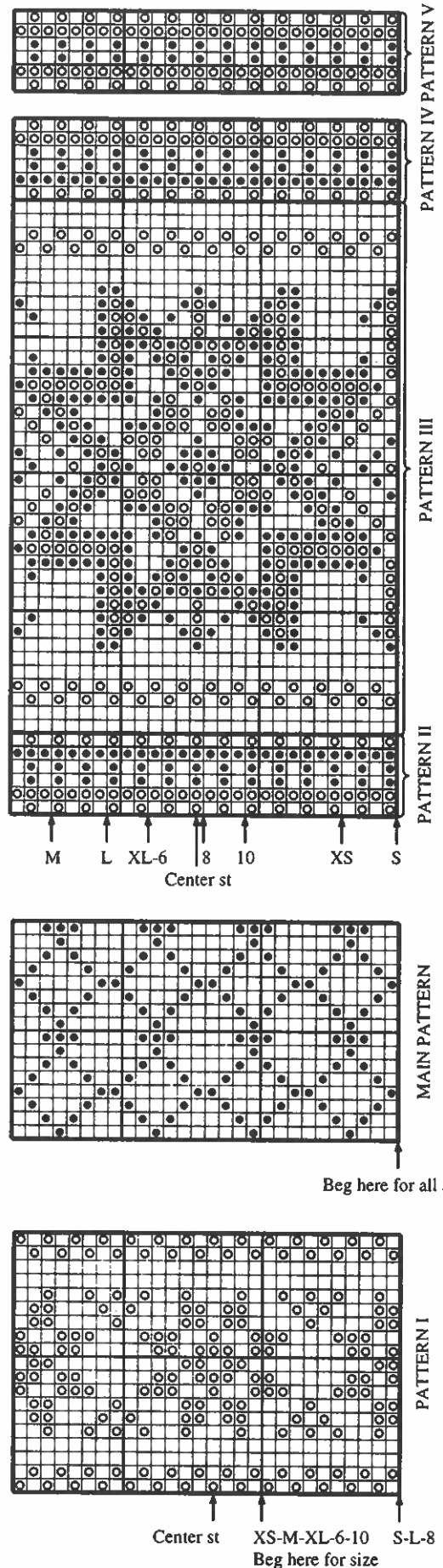
FRONT NECK OPENING: C OFF the center 17/19/21 sts of front for neck opening. Working back and forth, beg Rs at neck edge. Cont C OFF at beg of every R 3/4 sts twice, 3 sts twice, then 1 st 6/8/8 times. When Pattern III is complete, beg back neck opening.

BACK NECK OPENING: C OFF the center 27/31/33 sts of back for neck opening. Working each side of the body separately, cont C OFF every other R at back neck edge, 3 sts once, then 1 st 1/2/2 times. Complete Pattern V, ending with a WS R. K 2 Rs with MC, then C OFF. Complete other side of body to match.

SLEEVES: With CC1 and dp needles in US size 2(2.5mm), C O 42/44/46 sts. Join, and working in the rnd, work K 1, P 1 rib for 2⅞"(6cm). Inc 15/17/17 sts evenly spaced on last rnd of rib (57/61/63 sts). Change to dp needles in US size 3(3mm) or 4(3.5mm) and work Pattern I, placing center st of graph at center of sleeve. AT THE SAME TIME, beg inc 1 st at beg and end of every fourth rnd 19/20/22, times leaving 2 sts between inc sts (95/101/107 sts). Beg Main Pattern and work until sleeve measures approx 9½"(24cm)/11"(28cm)/11¾"(30cm) from bottom of rib, ending after fourth or eighth rnd of Main Pattern. Work Pattern V, K 2 rnds with MC, then work Pattern I. K 1 rnd with MC, P 5 rnds for facing, then C OFF. Make second sleeve to match.

FINISHING: Finish body and sleeves following instructions on page 2.

NECKBAND: With CC1 and dp needles in US size 2(2.5mm), pick up 102/106/110 sts along neck edge using a crochet hook and method described on page 2. Join, and working in the rnd, work K 1, P 1 rib for 2⅞"(6cm). C OFF loosely in rib. Fold neckband to inside along middle of rib and sew loosely to WS.



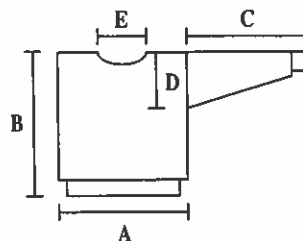
- = MC = white 0010
- ◻ = CC1 = norwegian blue 5744
- ◼ = CC2 = sand gray 0004

HEILO/FALK LAKE PLACID 1980



ADULT PULLOVER

FINISHED MEASUREMENTS:



ADULT'S AND CHILD'S PULLOVER

MATERIALS: Heilo or Falk

ADULT SIZES:	XS	S	M	L	XL
Main Color: off white 0017	400	450	500	550	600 gr
Contrast Color: navy 5563	350	400	450	500	550 gr

CHILD'S SIZES:	6	8	10 yrs
Main Color: off white 0017	250	300	350 gr
Contrast Color: navy 5563	200	250	300 gr

SUGGESTED NEEDLE SIZES:

Cir and dp needles in US size 2(2.5mm) and 3(3mm) or 4(3.5mm). Adjust needle sizes as needed to obtain the correct gauge.

GAUGE: 24 sts and 28 rnds of pattern or 30 rnds of st st = 4"(10cm) x 4"(10cm)

- A = Chest Width: 21³/₈"(23¹/₄", 24", 24³/₄", 26¹/₈")/55cm(59cm, 61cm, 63cm, 67cm)
- B = Body Length: 25¹/₄"(26", 26³/₄", 27³/₈", 28³/₈")/64cm(66cm, 68cm, 70cm, 72cm)
- C = Sleeve Length: 17³/₄"(18¹/₂", 19¹/₄", 20¹/₈", 20¹/₂")/45cm(47cm, 49cm, 51cm, 52cm)
- D = Armhole Depth: 9⁷/₈"(10¹/₄", 10⁵/₈", 11", 11³/₈")/25cm(26cm, 27cm, 28cm, 29cm)
- E = Neck Opening Width: 7¹/₂"(7⁷/₈", 8¹/₄", 8⁵/₈", 8³/₈")/19cm(20cm, 21cm, 22cm, 22cm)

Watch gauge carefully to obtain the correct finished measurements!

BODY: With CC and cir needle in US size 2(2.5mm), C O 240/256/264/272/288 sts. Join, and working in the rnd, work K 1, P 1 rib for 2"(5cm). Inc 26/30/30/30/34 sts evenly spaced on last rnd of rib (266/286/294/302/322 sts). Change to cir needle in US size 3(3mm) or 4(3.5mm) and place side markers at beg of rnd and after 133/143/147/151/161 sts. Work Pattern I, Pattern II, Pattern III, then Main Pattern; beg each size as shown on graph, work to marker, then beg again as shown to make patterns on front and back symmetrical. Work until body measures 15³/₈"(39cm)/16¹/₈"(41cm)/17"(43cm)/17³/₄"(45cm)/18¹/₂"(47cm), ending after 2 rnds of MC. Work Pattern IV, Pattern II, then Pattern I; when 20 rnds of pattern work rem, beg front neck opening.

FRONT NECK OPENING: C OFF the center 23/25/27/29/29 sts of front for neck opening. Working back and forth, beg Rs at neck edge. Cont C OFF at beg of every R 3 sts twice, 2 sts 4 times, then 1 st 8 times. Complete Pattern I, ending with a RS R.

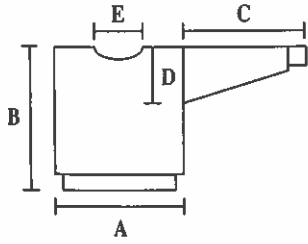
BACK NECK OPENING: C OFF the center 45/47/49/51/51 sts of back for neck opening. Working each side of body separately, work 2 Rs of st st with CC, P 1 R, then C OFF. Complete other side of body to match.

SLEEVES: With CC and dp needles in US size 2(2.5mm), C O 46/48/50/52/54 sts. Join, and working in the rnd, work rib same as body. Inc 15/17/19/21/23 sts evenly spaced on last rnd of rib (61/65/69/73/77 sts). Change to dp needles in US size 3(3mm) or 4(3.5mm) and work Pattern I, Pattern II, then Pattern III. Beg Main Pattern, placing center st of graph at center of sleeve. AT THE SAME TIME, beg inc 1 st at beg and end of every fourth rnd 20/20/25/31/31 times, then every third rnd 10/10/5/0/0 times, leaving 2 sts between inc sts (121/125/131/135/139 sts). Cont until sleeve measures 13³/₈"(34cm)/14¹/₈"(36cm)/15"(38cm)/15³/₄"(40cm)/16¹/₈"(41cm) from bottom of rib. Work Pattern III, Pattern II, then Pattern I. P 5 rnds with CC for facing, then C OFF. Make second sleeve to match.

FINISHING: Finish body and sleeves following instructions on page 2.
NECKBAND: With CC and dp needles in US size 2(2.5mm), pick up approx 120/124/128/130/136 sts along neck edge using a crochet hook and method described on page 2. Join, and working in the rnd, work K 1, P 1 rib for 3¹/₈"(8cm). C OFF loosely in rib. Fold neckband to inside along middle of rib and sew loosely to WS.

CHILD'S PULLOVER

FINISHED MEASUREMENTS:



- A = Chest Width: 16½"(17¼", 18⅞")/42cm(45cm, 48cm)
- B = Body Length: 17¾"(19¼", 21¼")/45cm(49cm, 54cm)
- C = Sleeve Length: 13⅜"(14½", 15⅜")/34cm(37cm, 39cm)
- D = Armhole Depth: 7⅞"(8⅝", 9")/20cm(22cm, 23cm)
- E = Neck Opening Width: 5⅞"(6¼", 6¼")/15cm(16cm, 16cm)

Watch gauge carefully to obtain the correct finished measurements!

BODY: With CC and cir needle in US size 2(2.5mm), C O 178/190/206 sts. Join, and working in the rnd, work K 1, P 1 rib for 2"(5cm). Inc 24 sts evenly spaced on last rnd of rib (202/214/230 sts). Change to cir needle in US size 3(3mm) or 4(3.5mm) and place side markers at beg of rnd and after 101/107/115 sts. Work Pattern I, Pattern II, Pattern III, then Main Pattern; beg each size as shown on graph, work to marker then beg again as shown to make patterns on front and back symmetrical. Work until body measures approx 9⅞"(24cm)/9⅞"(24cm)/11⅞"(29cm) from bottom of rib, ending after 2 rnds of MC. Work Pattern IV, then for sizes 6/8 yrs, work Pattern II, then Pattern III; for size 10 yrs, work Pattern II, then Pattern I, working until 14/16/18 rnds of Pattern III or Pattern I rem.

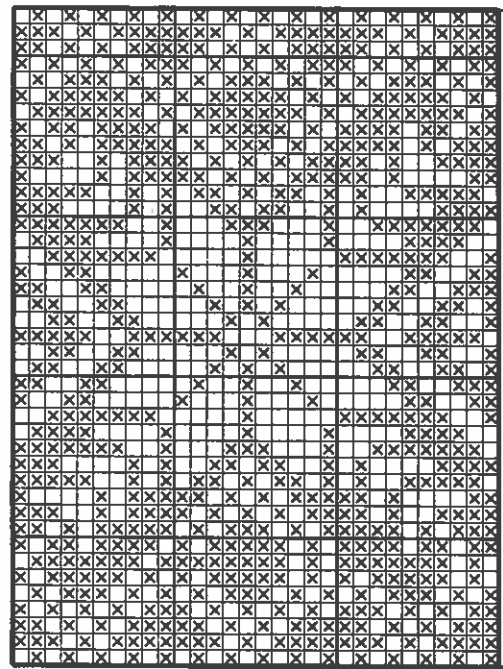
FRONT NECK OPENING: C OFF the center 11/13/13 sts of front for neck opening. Working back and forth, beg Rs at neck edge. Cont C OFF every R at neck edge, 3 sts 4 times, 2 sts 4 times, then 1 st 6 times. Complete Pattern III or I, ending with a RS R.

BACK NECK OPENING: C OFF the center 37/39/39 sts of back for neck opening. Working each side of the body separately, work 2 Rs of st st with CC, P 1 R on RS, then C OFF. Complete other side of body to match.

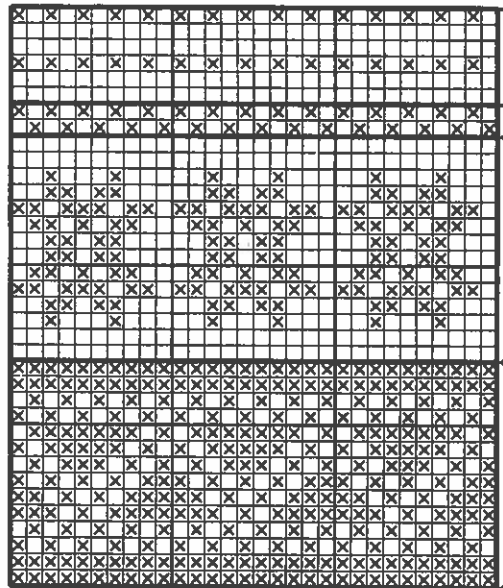
SLEEVES: With CC and dp needles in US size 2(2.5mm), C O 42/44/46 sts. Join, and working in the rnd, work rib same as body. Inc 15/17/17 sts evenly spaced on last rnd of rib (57/61/63 sts). Change to dp needles in US size 3(3mm) or 4(3.5mm) and work Pattern I, Pattern II, then Pattern III. Beg Main Pattern, placing center st of graph at center of sleeve. AT THE SAME TIME, beg inc 1 st at beg and end of every fourth rnd 18/20/20 times, then every third rnd 2/2/4 times, leaving 2 sts between inc sts (97/105/111 sts). Work until sleeve measures 8⅞"(22cm)/9⅞"(25cm)/10⅞"(27cm) from bottom of rib, ending after 2 rnds of MC. Work Pattern III, Pattern II, then Pattern I. P 5 rnds with CC for facing, then C OFF. Make second sleeve to match.

FINISHING: Finish body and sleeves following instructions on page 2.

NECKBAND: With CC and dp needles in US size 2(2.5mm), pick up approx 114/116/118 sts along neck edge using a crochet hook and method described on page 2. Join, and working in the rnd, work K 1, P 1 rib for 3⅞"(8cm). C OFF loosely in rib. Fold neckband to inside along middle of rib and sew loosely to WS.



PATTERN IV



MAIN PATTERN

PATTERN III

PATTERN II

PATTERN I

↑ XL-6 8 10 Center st XS S M L
Beg here for size

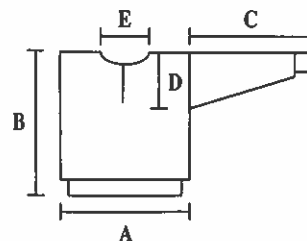
□ = MC = off white 0017
⊗ = CC = navy 5563

HEILO/FALK SARAJEVO 1984



ADULT PULLOVER

FINISHED MEASUREMENTS:



ADULT'S AND CHILD'S PULLOVER

MATERIALS: Heilo or Falk

ADULT SIZES:	XS	S	M	L	XL
Main Color:	550	600	650	700	750 gr
Contrast Color 1:	200	250	250	250	250 gr
Contrast Color 2:	200	250	250	250	250 gr

CHILD'S SIZES:	6	8	10 yrs
Main Color:	350	400	450 gr
Contrast Color 1:	100	150	150 gr
Contrast Color 2:	100	100	150 gr

COLORWAYS:

Option	Main Color	Contrast Color
I	navy 5563	CC1 - off white 0017 CC2 - cherry red 4018
II	off white 0017	CC1 - soft blue 5943 CC2 - norwegian blue 5744

SUGGESTED NEEDLE SIZES:

Cir and dp needles in US size 2(2.5mm), 3(3mm) and 4(3.5mm). Adjust needle sizes as needed to obtain the correct gauge.

GAUGE: 24 sts and 28 rnds of pattern, or 30 rnds of st st = 4"(10cm) x 4"(10cm)

ACCESSORIES: Adult, 3 buttons; Child's, 2 buttons.

- A = Chest Width: 21 $\frac{1}{4}$ "(22 $\frac{1}{2}$ " , 23 $\frac{5}{8}$ " , 24 $\frac{3}{4}$ " , 26")/54cm(57cm,60cm, 63cm,66cm)
 B = Body Length: 25 $\frac{1}{4}$ "(26" , 26 $\frac{3}{4}$ " , 27 $\frac{5}{8}$ " , 28 $\frac{3}{8}$ ")/64cm(66cm,68cm, 70cm,72cm)
 C = Sleeve Length: 18 $\frac{7}{8}$ "(19 $\frac{1}{4}$ " , 19 $\frac{3}{4}$ " , 20 $\frac{1}{8}$ " , 20 $\frac{1}{2}$ ")/48cm(49cm,50cm, 51cm,52cm)
 D = Armhole Depth: 10 $\frac{1}{4}$ "(10 $\frac{5}{8}$ " , 11" , 11 $\frac{3}{8}$ " , 11 $\frac{3}{4}$ ")/26cm(27cm,28cm, 29cm,30cm)
 E = Neck Opening Width: 7 $\frac{7}{8}$ "(7 $\frac{7}{8}$ " , 8 $\frac{1}{4}$ " , 8 $\frac{5}{8}$ " , 8 $\frac{5}{8}$ ")/20cm(20cm, 21cm,22cm,22cm)

Watch gauge carefully to obtain the correct finished measurements!

BODY: With MC and cir needle in US size 2(2.5mm), C O 240/256/272/288/304 sts. Join, and working in the rnd, work K 1, P 1 rib for 2 $\frac{3}{4}$ "(7cm). Inc 16 sts evenly spaced on last rnd of rib (256/272/288/304/320 sts). Change to cir needle in US size 4(3.5mm) and work Pattern I. Change to cir needle in US size 3(3mm) and beg st st with MC, working until body measures 14 $\frac{1}{2}$ "(37cm)/15 $\frac{3}{8}$ "(39cm)/16 $\frac{1}{8}$ "(41cm)/17"(43cm)/17 $\frac{3}{4}$ "(45cm) from bottom of rib. Place side markers at beg of rnd and after 128/136/144/152/160 sts and inc 1 st after both markers. Change to cir needle in US size 4(3.5mm) and work first 9 rnds of Pattern II. On next rnd, C OFF 7 sts at center front for placket opening and complete rnd, then cut yarn. Sl first 61/65/69/73/77 sts of next rnd from left needle to right needle, reattach yarn and beg rnds at placket; cont working Pattern II as shown on graph. C O 4 new sts over C OFF sts (these are cutting sts; work in MC every rnd and exclude from pattern and st counts) and cont working in the rnd. Work until 19 rnds of Pattern II rem.

FRONT NECK OPENING: C OFF the 4 cutting sts at center front. Working back and forth, beg Rs at neck edge. Cont C OFF at beg of every R 8/8/9/10/10 sts twice, 3 sts 4 times, 2 sts 4 times, then 1 st 4 times. Complete Pattern II, ending with a WS R. K 2 Rs with CC2, then C OFF.

SLEEVES: With MC and dp needles in US size 2(2.5mm), C O 44/46/48/50/50 sts. Join, and working in the rnd, work K 1, P 1 rib for 2 $\frac{3}{4}$ "(7cm). Inc 15/15/15/17/17 sts evenly spaced on last rnd of rib (59/61/63/67/67 sts). Change to dp needles in US size 4(3.5mm) and work Pattern I, placing center st of graph at center of sleeve. AT THE SAME TIME, beg inc 1 st at beg and end of every fourth rnd 15/15/15/18/16 times, then every third rnd 18/19/19/16/22 times, leaving 2 sts between inc sts (125/129/133/137/143 sts). Complete Pattern I and change to dp needles in US size 3(3mm). Beg st st in MC and work until sleeve measures 15"(38cm)/15 $\frac{3}{8}$ "(39cm)/15 $\frac{3}{4}$ "(40cm)/16 $\frac{1}{8}$ "(41cm)/16 $\frac{1}{2}$ "(42cm) from bottom of rib. Change to dp needles in US size 4(3.5mm) and work Pattern III, placing center st of graph at center of sleeve. When Pattern III is complete, P 5 rnds with CC2 for facing, then C OFF. Make second sleeve to match.

FINISHING: Finish body and sleeves following instructions on page 2.

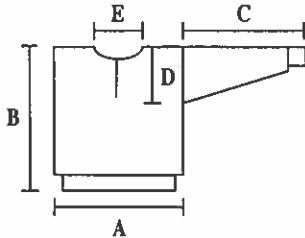
BUTTON PLACKETS: With CC2 and dp needles in US size 2(2.5mm), pick up 24 sts per 4"(10cm) along one side of placket opening using a crochet hook and method described on page 2. Work in st st for 2 $\frac{3}{8}$ "(6cm), then C OFF. Make placket on other side to match, working 2 buttonholes, each over 3 sts, using instructions on page 2 after $\frac{5}{8}$ "(1.5cm) of st st. Place

bottom buttonhole 2¾"(7cm) from bottom edge, and top buttonhole 2¾"(7cm) from top edge. Work 1½"(3cm) of st st, and make 2 more buttonholes, placing them to match. Work ½"(1.5cm) of st st, then C OFF. Fold plackets to inside along middle of placket, lining up buttonholes, and sew neatly to WS. Lay plackets tog with buttonholes on top and neatly sew bottom edges to C OFF sts of placket opening.

NECKBAND: With CC2 and cir needle in US size 2(2.5mm), pick up approx 122/126/130/134/136 sts along neck edge and tops of plackets using a crochet hook and method described on page 2. Work K 1, P 1 rib for 2¾"(6cm) and make buttonholes on same side as placket after ½"(1.5cm) and 1¾"(4.5cm) of st st. C OFF loosely in rib. Fold neckband to inside at middle of rib, lining up buttonholes, sew loosely to WS and neatly sew ends of neckband closed. Sew around buttonholes with buttonhole st, and sew buttons to opposite placket under buttonholes.

CHILD'S PULLOVER

FINISHED MEASUREMENTS:



- A = Chest Width: 15¾"(17", 18½")/40cm(43cm, 47cm)
- B = Body Length: 17¾"(18¾", 20½")/44cm(48cm, 52cm)
- C = Sleeve Length: 13¾"(14½", 16½")/34cm(37cm, 41cm)
- D = Armhole Depth: 8¼"(8¾", 9½")/21cm(22cm, 24cm)
- E = Neck Opening Width: 5½"(5½", 5¾")/13cm(14cm, 15cm)

Watch gauge carefully to obtain the correct finished measurements!

BODY: With MC and cir needle in US size 2(2.5mm), C O 176/192/208 sts. Join, and working in the rnd, work K 1, P 1 rib for 2¾"(6cm). Inc 16 sts evenly spaced on last rnd of rib (192/208/224 sts). Change to cir needle in US size 4(3.5mm) and work Pattern I. Change to cir needle in US size 3(3mm) and beg st st with MC, working until body measures 9¾"(25cm)/11¾"(29cm)/11"(28cm) from bottom of rib. Place side markers at beg of rnd and after 96/104/112 sts and inc 1 st after both markers. On next rnd, C OFF 7 sts at center front for placket opening and complete rnd, then cut yarn. Sl first 45/49/53 sts of next rnd from left needle to right needle, reattach yarn and beg rnds at placket; cont in st st. C O 4 new sts over C OFF sts (these are cutting sts; work in MC every rnd and exclude from pattern and st counts). Change to cir needle in US size 4(3.5mm) and work first 53 rnds of Pattern IV for sizes 6/8 yrs, and all of Pattern IV for size 10 yrs. Work until 10 rnds of Pattern IV rem for sizes 6/8 yrs, and 15 rnds for size 10 yrs.

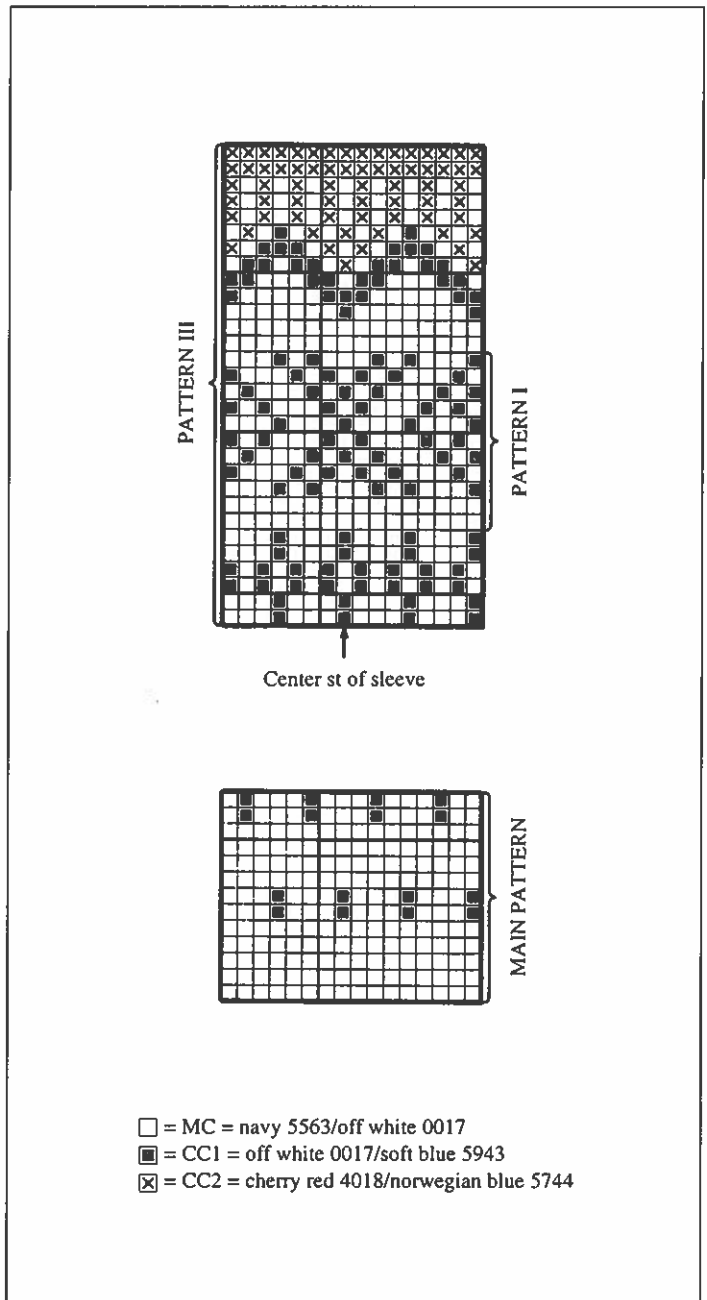
FRONT NECK OPENING: C OFF the 4 cutting sts at center front. Working back and forth, beg Rs at neck edge. Cont C OFF at beg of every R 6/7/8 sts twice, 2 sts 4 times, then 1 st 4 times. Complete Pattern IV, ending with a WS R. K 2 Rs with CC2, then C OFF.

SLEEVES: With MC and dp needles in US size 2(2.5mm), C O 44/44/46 sts. Join, and working in the rnd, work K 1, P 1 rib for 2¾"(7cm). Inc 9/11/11 sts evenly spaced on last rnd (53/55/57 sts). Change to dp needles in US size 4(3.5mm) and work Pattern I, placing center st of graph at center of sleeve. AT THE SAME TIME, beg inc 1 st at beg and end of every third rnd, 24/26/29 times, leaving 2 sts between inc sts (101/107/115 sts). Complete Pattern I, change to dp needles in US size 3(3mm) and beg st st with MC, working until sleeve measures 9"(23cm)/10¼"(26cm)/11¾"(30cm) from bottom of rib. Change to dp needles in US size 4(3.5mm) and work Pattern III, placing center st of graph at center of sleeve. Complete Pattern III, P 5 mds with CC2 for facing, then C OFF.

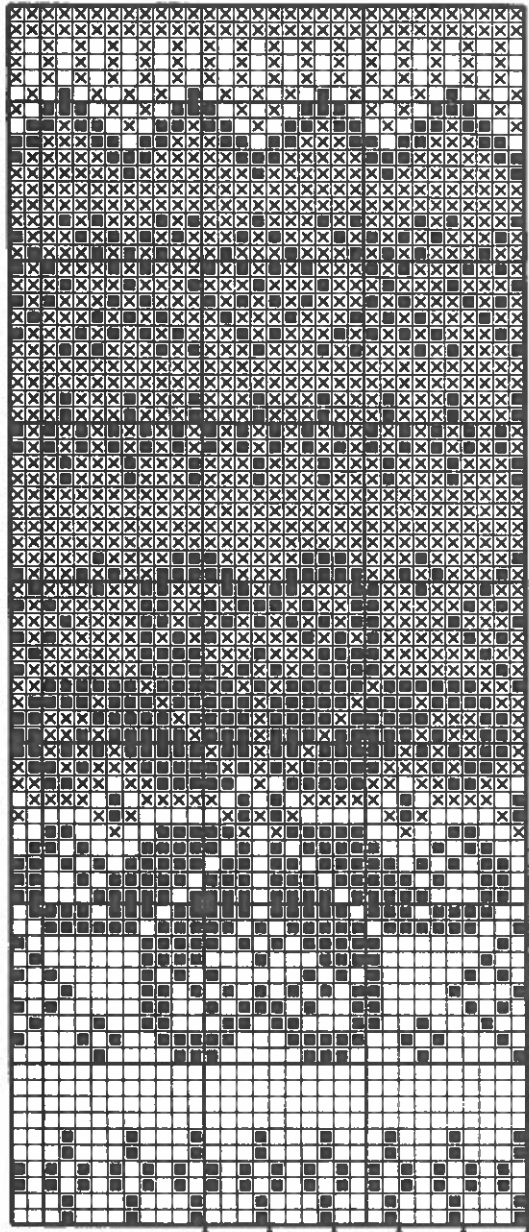
FINISHING: Finish body and sleeves following instructions on page 2.

BUTTON PLACKETS: Pick up sts along edges of placket opening and work same as Adult Pullover, centering one pair of buttonholes on right or left placket.

NECKBAND: Pick up and work 110/114/116 sts along neck edge and tops of button plackets same as Adult Pullover.

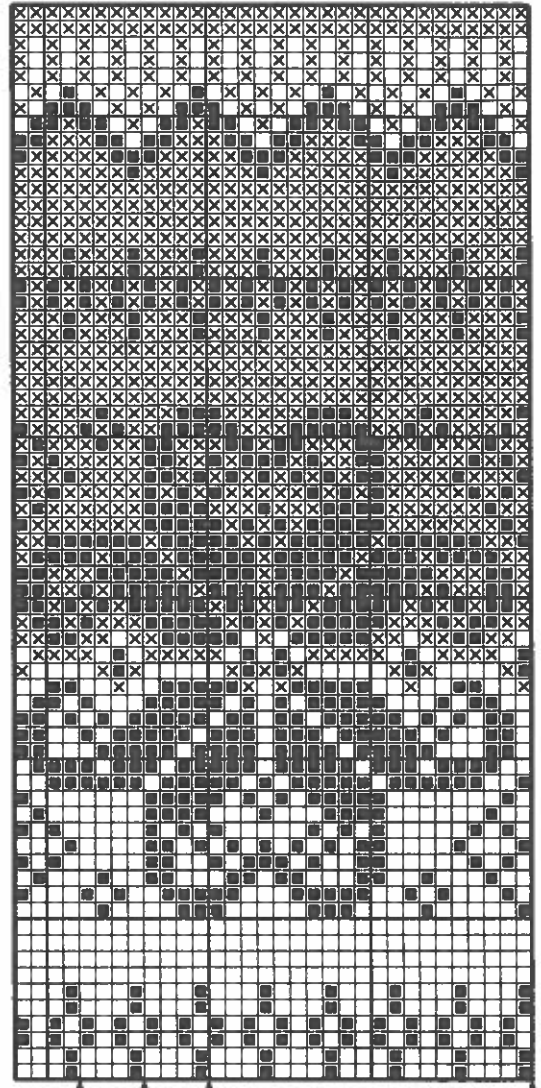


PATTERN II



Beg at center front all sizes
 XS S M L XL
 Beg here at marker

PATTERN IV



8 10 Beg at center front all sizes
 Beg here at marker 6

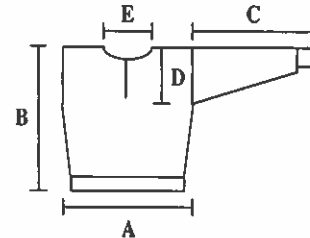
- = MC = navy 5563/off white 0017
- = CC1 = off white 0017/soft blue 5943
- ⊗ = CC2 = cherry red 4018/norwegian blue 5744

HEILO/FALK CALGARY 1988



ADULT PULLOVER

FINISHED MEASUREMENTS:



- A = Chest Width: 21⁵/₈"(22⁷/₈" ,23⁵/₈" ,24³/₄" ,25⁵/₈")/55cm(58cm,60cm, 63cm,65cm)
 B = Body Length: 25⁵/₈"(26³/₈" ,27¹/₈" ,28" ,28³/₄")/65cm(67cm,69cm, 71cm,73cm)
 C = Sleeve Length: 18¹/₈"(18⁷/₈" ,19¹/₄" ,19³/₄" ,20¹/₂")/46cm(48cm,49cm, 50cm,52cm)
 D = Armhole Depth: 10¹/₄"(10⁵/₈" ,10⁵/₈" ,11" ,11³/₈")/26cm(27cm,27cm, 28cm,29cm)
 E = Neck Opening Width: 7¹/₈"(7¹/₈" ,7¹/₂" ,7¹/₂" ,7¹/₂")/18cm(18cm,19cm, 19cm,19cm)

Watch gauge carefully to obtain the correct measurements!

BODY: With MC and cir needle in US size 2(2.5mm), C O 206/218/230/242/254 sts. Join, and working in the rnd, work 3¹/₈"(8cm) of K 1, P 1 rib. Inc 24 sts evenly spaced on last rnd of rib (230/242/254/266/278 sts). Change to cir needle in US size 3(3mm) or 4(3.5mm) and place side markers at beg of rnd and after 115/121/127/133/139 sts. Work Pattern I, beg each size as shown on graph, work to marker then beg again as shown to make pattern on front and back symmetrical. AT THE SAME TIME, beg inc 1 st before and after each marker every 9/9/10/10/11 rnds 9 times (266/278/290/302/314 sts), working inc sts into patterns. When Pattern I is complete, beg Main Pattern, placing center st of graph at center of front and back. Work until body measures 14¹/₈"(36cm)/15"(38cm)/15³/₄"(40cm)/16¹/₂"(42cm)/17³/₈"(44cm) from bottom of rib.

FRONT PLACKET OPENING: Cont Main Pattern, C OFF the center 3 sts. On next rnd, C O 3 new sts over the C OFF sts (these are cutting sts; work in MC throughout and exclude from st counts). Work until body measures approx 15³/₈"(39cm)/16¹/₈"(41cm)/17"(43cm)/17³/₄"(45cm)/18¹/₂"(47cm) from bottom of rib, ending with a "lice" rnd. Work Pattern II, Pattern III, then first 12 rnds of Pattern IV, beg each size as shown. Cut yarn at end of last rnd. Sl first 65/68/71/74/77 sts of rnd from left needle to right needle. Reattach yarn and C OFF the 3 cutting sts.

FRONT AND BACK NECK OPENING: Working back and forth, beg Rs at neck edge and cont Pattern IV. Cont C OFF every R at neck edge 5/5/6/6/6 sts twice, 2 sts 6 times, then 1 st 18 times. Complete Pattern IV, ending with a RS R. Work st st in MC over first 90/96/100/106/112 sts of next R, turn and P 1 R on RS, then C OFF. C OFF next 43/43/45/45/45 sts for back neck opening. Work 1 R of st st over rem 90/96/100/106/112 sts. P 1 R on RS, then C OFF.

SLEEVES: With MC and dp needles in US size 2(2.5mm), C O 50/50/52/54/54 sts. Join, and working in the rnd, work rib same as body. Inc 17/17/19/21/21 sts evenly spaced on last rnd of rib (67/67/71/75/75 sts). Change to dp needles in US size 3(3mm) or 4(3.5mm) and work Pattern I, placing center st of graph at center of sleeve. AT THE SAME TIME, beg inc 1 st at beg and end of every fourth rnd 15/15/29/30/32 times, then every third rnd 14/15/0/0/0 times, leaving 2 sts between inc sts (125/127/129/135/139 sts). When Pattern I is complete, beg Main Pattern and work until sleeve measures 15³/₈"(39cm)/16¹/₈"(41cm)/16¹/₂"(42cm)/17"(43cm)/17³/₄"(45cm) from bottom of rib, ending with a "lice" rnd. Work Pattern II, placing center st of graph at center of sleeve. K 2 rnds with CC, change

ADULT'S AND CHILD'S PULLOVER

MATERIALS: Heilo or Falk

ADULT SIZES:	XS	S	M	L	XL
Main Color:	600	650	700	750	800 gr
Contrast Color:	250	250	300	350	350 gr

CHILD'S SIZES:	6	8	10 yrs
Main Color:	350	400	450 gr
Contrast Color:	150	150	200 gr

COLORWAYS:

Option	Main Color	Contrast Color
I	off white 0017	CC - black 0090
II	black 0090	CC - off white 0017

SUGGESTED NEEDLE SIZES:

Cir and dp needles in US size 2(2.5mm) and 3(3mm) or 4(3.5mm). Adjust needle sizes as needed to obtain the correct gauge.

GAUGE: 24 sts and 28 rnds of pattern or 30 rnds of st st = 4"(10cm) x 4"(10cm)

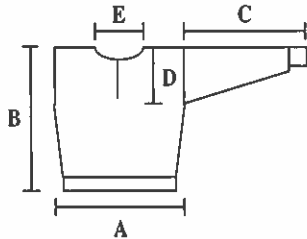
ACCESSORIES: Adult, 1 clasp and approx 1³/₈ yd(126cm) "Telemark" woven braid; Child, 1 clasp and 1 yd(90.5cm) "Telemark" woven braid.

to MC and K 1 rnd, P 5 rnds for facing, then C OFF. Make second sleeve to match.

FINISHING: Finish body and sleeves following instructions on page 2. Pin woven braid to body along placket edge and neck opening, mitering corners as shown in photo and having 1/8" (.5cm) of solid black edge showing on RS (rem 3/4" of black edge will be turned over neck and cut edges of placket). Neatly sew braid by hand, fold edge of braid to inside and loosely sew to WS. Sew clasp to placket opening as shown in photo.

CHILD'S PULLOVER

FINISHED MEASUREMENTS:



- A = Chest Width: 17"(18 1/8", 19 1/4")/43cm(46cm, 49cm)
- B = Body Length: 17 3/4"(18 7/8", 20 1/8")/45cm(48cm, 51cm)
- C = Sleeve Length: 13 3/4"(14 1/2", 15 3/8")/35cm(37cm, 39cm)
- D = Armhole Depth: 7 7/8"(8 1/4", 8 3/8")/20cm(21cm, 22cm)
- E = Neck Opening Width: 5 1/8"(5 1/8", 5 1/2")/13cm(13cm, 14cm)

Watch gauge carefully to obtain the correct measurements!

BODY: With MC and cir needle in US size 2(2.5mm), C O 174/190/200 sts. Join, and working in the rnd, work K 1, P 1 rib for 2"(5cm)/2"(5cm)/2 3/8"(6cm). Inc 20/12/18 sts evenly spaced on last rnd of rib (194/202/218 sts). Change to cir needle in US size 3(3mm) or 4(3.5mm) and place side markers at beg of rnd and after 97/101/109 sts. Work Pattern I, beg each size as shown on graph, work to marker then beg again as shown to make pattern on front and back symmetrical. AT THE SAME TIME, beg inc 1 st before and after each marker every 28/30/32 rnds 4 times (210/218/234 sts), working inc sts into patterns. When Pattern I is complete, beg Main Pattern and work until body measures approx 11"(28cm)/11"(28cm)/12 1/4"(31cm) from bottom of rib, ending with a "lice" rnd.

FRONT PLACKET OPENING: Beg Pattern II and C OFF the center 3 sts of front. On next rnd, C O 3 new sts over the C OFF sts (these are cutting sts; work in MC throughout and exclude from st counts). When Pattern II is complete, work Pattern III, beg each size as shown. Complete Pattern III and cut yarn at end of rnd. Sl 51/53/57 sts at beg of next rnd from left needle to right needle and reattach yarn. Beg Pattern IV and C OFF 3 cutting sts.

FRONT AND BACK NECK OPENING: Working back and forth, beg Rs at neck edge and cont Pattern IV. Cont C OFF at beg of every R, 5 sts twice, 2 sts 4 times, then 1 st 10/10/12 times. Complete Pattern IV as shown for each size, ending with a RS R. Work st st in MC over the first 74/78/84 sts of R, turn and P 1 R on RS, then C OFF. C OFF next 31/31/33 sts for back neck opening. Work 1 R of st st over rem 74/78/84 sts, P 1 R on RS, then C OFF.

SLEEVES: With MC and dp needles in US size 2(2.5mm), C O 40/42/44 sts. Join, and working in the rnd, work rib same as body. Inc 15/17/19 sts evenly spaced on last rnd of rib (55/59/63 sts). Change to dp needles in US size 3(3mm) or 4(3.5mm) and work Pattern I, placing center st of graph at center of sleeve. AT THE SAME TIME, beg inc 1 st at beg and end of every fourth rnd 21/21/22 times, leaving 2 sts between inc sts (97/103/107 sts). When Pattern I is complete, beg Main Pattern and work until sleeve measures 11"(28cm)/11 3/4"(30cm)/12 3/8"(32cm) from bottom of rib, ending with a "lice" rnd. Work Pattern II, placing center st of graph at center of sleeve. P 5 rnds with MC for facing, then C OFF. Make second sleeve to match.

FINISHING: Finish body and sleeves same as adult pullover. Pin braid to body and neatly sew to body same as adult pullover. Sew clasp to front as shown in photo.

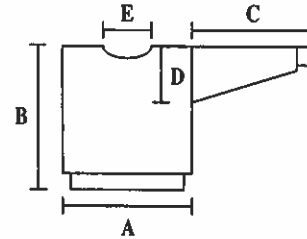
□ = MC = off white 0017/black 0090
 ⊗ = CC = black 0090/off white 0017

HEILO/FALK ALBERTVILLE 1992



ADULT PULLOVER

FINISHED MEASUREMENTS:



ADULT AND CHILD'S PULLOVER

MATERIALS: Heilo or Falk

ADULT SIZES:	XS	S	M	L	XL
Main Color:	350	400	450	500	550 gr
Contrast Color 1:	250	300	300	350	350 gr
Contrast Color 2:	50	50	50	50	50 gr
Contrast Color 3:	50	50	50	50	50 gr
Contrast Color 4:	50	50	50	50	50 gr
Contrast Color 5:	100	100	100	150	150 gr

CHILD'S SIZES:	6	8	10 yrs
Main Color:	250	300	300 gr
Contrast Color 1:	100	150	200 gr
Contrast Color 2:	50	50	50 gr
Contrast Color 3:	50	50	50 gr
Contrast Color 4:	50	50	50 gr
Contrast Color 5:	50	50	50 gr

COLORWAYS:

Option	Main Color	Contrast Color
I	charcoal 0083	CC1 - off white 0017
		CC2 - dk plum 4845
		CC3 - cherry red 4018
		CC4 - teal green 7562
		CC5 - charcoal gray 0007
II	norwegian blue 5744	CC1 - off white 0017
		CC2 - dk aqua 6545
		CC3 - teal green 7562
		CC4 - loden green 8152
		CC5 - dk plum 4845
III	off white 0017	CC1 - navy 5563
		CC2 - sand gray 0004
		CC3 - soft blue 5943
		CC4 - loden green 8152
		CC5 - dk plum 4845

SUGGESTED NEEDLE SIZE:

Cir and dp needles in US size 2(2.5mm) and 3(3mm) or 4(3.5mm). Adjust needle sizes as needed to obtain the correct gauge.

GAUGE: 24 sts and 28 rnds of pattern or 30 rnds of st st = 4"(10cm) x 4"(10cm)

- A = Chest Width: 21⁵/₈"(22⁷/₈" , 23⁵/₈" , 24³/₈" , 26³/₈")/55cm(58cm,60cm, 63cm,67cm)
 B = Body Length: 24³/₈"(25¹/₄" , 26" , 26³/₄" , 27⁵/₈")/62cm(64cm,66cm, 68cm,70cm)
 C = Sleeve Length: 17³/₄"(18¹/₂" , 19¹/₄" , 19³/₄" , 20¹/₂")/45cm(47cm,49cm, 50cm,52cm)
 D = Armhole Depth: 10¹/₄"(10⁵/₈" , 11" , 11³/₄" , 12¹/₄")/26cm(27cm,28cm, 30cm,31cm)
 E = Neck Opening Width: 7¹/₂"(7¹/₂" , 7⁷/₈" , 8¹/₄" , 9")/19cm(19cm,20cm, 21cm,23cm)

Watch gauge carefully to obtain the correct finished measurements!

BODY: With MC and cir needle in US size 2(2.5mm), C O 218/226/234/234/246 sts. Join, and working in the rnd, work K 1 tbl, P 1 rib for 2"(5cm)/2"(5cm)/2"(5cm)/2³/₈"(6cm)/2³/₈"(6cm). Change to CC5, K 1 rnd, then work 2 rnds of rib. Change to CC1, K 1 rnd, then work 2 rnds of rib. Inc 24/24/24/24/28 sts evenly spaced on last rnd of rib (242/250/258/258/274 sts). Next rnd, * K 1 in MC, K 1 in CC1, rep from * to end of rnd. Change to cir needle in US size 3(3mm) or 4(3.5mm) and place side markers at beg of rnd and after 121/125/129/129/137 sts. Work Pattern I, placing center st of graph at centers of front and back; beg each size as shown on graph, work to marker then beg again as shown to make pattern on front and back symmetrical. AT THE SAME TIME, beg inc 1 st on each side of both markers, every twelfth rnd 7 times for sizes XS/S; every eleventh rnd 8 times for M; and every eighth rnd 11/12 times for L/XL, leaving 2 sts between inc sts (270/278/290/302/322 sts). Complete Pattern I, then beg Main Pattern and work until body measures approx 14¹/₈"(36cm)/15"(38cm)/15³/₄"(40cm)/16¹/₂"(42cm)/17³/₈"(44cm) from bottom of rib, ending after seventh or fourteenth rnd of Main Pattern. Work Pattern I, placing center st of graph at centers of front and back; beg each size as shown on graph, work to marker, then beg again to make pattern on front and back symmetrical. Cont until 8 rnds of Pattern I rem.

FRONT NECK OPENING: C OFF the center 19/19/19/19/21 sts of front for neck opening. Working back and forth, beg Rs at neck edge. Complete Pattern I, then work Pattern II. AT THE SAME TIME, cont C OFF at neck edge every R, 3/3/4/5/5 sts twice, 3 sts twice, 2 sts 4/4/4/4/6 times, then 1 st 6/6/8/8/6 times. When 8 Rs of Pattern II rem, beg back neck opening.

BACK NECK OPENING: C OFF the center 33/33/35/37/41 sts of back for neck opening. Working each side of body separately, cont C OFF at back neck edge every other R, 5 sts once, then 1 st 1/1/2/2/2 times. Complete Pattern II, ending with a WS R. K 2 Rs with MC, then C OFF. Complete other side of body to match.

SLEEVES: With MC and dp needles in US size 2(2.5mm), C O 44/46/48/50/52 sts. Join, and working in the rnd, work rib same as body. Inc 23/23/25/25/25 sts evenly spaced on last rnd of rib (67/69/73/75/77 sts). Change to dp needles in US size 3(3mm) or 4(3.5mm) and work Pattern III, placing center st of graph at center of sleeve. AT THE SAME TIME, beg inc 1 st at beg and end of every fourth rnd 15/15/20/10/10 times, then every third rnd 14/15/11/24/26 times, leaving 2 sts between inc sts (125/129/135/143/

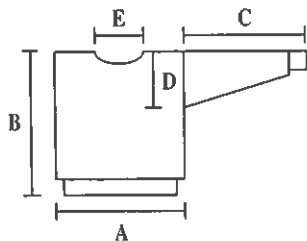
149 sts). Complete Pattern III, then beg Main Pattern and work until sleeve measures 8¼"(21cm)/9"(23cm)/9⅞"(25cm)/10¼"(26cm)/11"(28cm) from bottom of rib. Work Pattern I, then first 12 rnds of Pattern II. K 1 rnd with MC, P 5 rnds for facing, then C OFF. Make second sleeve to match.

FINISHING: Finish body and sleeves following instructions on page 2.

NECKBAND: With MC and dp needles in US size 2(2.5mm), pick up 110/110/110/121/121 sts along neck edge using a crochet hook and method described on page 2. Join, and working in the rnd, work first 12 rnds of Pattern II, dec 1 st over both shoulders on third, fifth, and twelfth rnds. K 1 rnd with MC, then P 1 rnd. K 11 rnds inc as for earlier dec, then C OFF. Fold neckband to inside at P rnd and sew loosely to WS.

CHILD'S PULLOVER

FINISHED MEASUREMENTS:



- A = Chest Width: 16½"(17¾", 18½")/42cm(45cm, 47cm)
- B = Body Length: 19¼"(20⅞", 21⅞")/49cm(51cm, 55cm)
- C = Sleeve Length: 14½"(15⅞", 16⅞")/37cm(39cm, 41cm)
- D = Armhole Depth: 7½"(7⅞", 8¼")/19cm(20cm, 21cm)
- E = Neck Opening Width: 5⅞"(5⅞", 5⅞")/13cm(15cm, 15cm)

Watch gauge carefully to obtain the correct finished measurements!

BODY: With MC and cir needle in US size 2(2.5mm), C O 164/176/188 sts. Join, and working in the rnd, work K 1 tbl, P 1 rib for 1"(2.5cm). Change to CC5, K 1 rnd, then 2 rnds of rib. Change to CC1, K 1 rnd, then 2 rnds of rib. Inc 14/18/18 sts evenly spaced on last rnd of rib (178/194/206 sts). Next rnd, * K 1 in MC, K 1 in CC1, rep from * to end of rnd. Change to cir needle in US size 3(3mm) or 4(3.5mm) and place side markers at beg of rnd and after 89/97/103 sts. For size 6 yrs, work Main Pattern; and sizes 8/10 yrs, work Pattern III, then Main Pattern; beg each size as shown on graph, work to marker then beg again as shown to make patterns on front and back symmetrical. AT THE SAME TIME, beg inc 1 st on each side of both markers, every ninth rnd 6 times for size 6 yrs, every thirteenth rnd 5 times for size 8 yrs, and every fifteenth rnd 5 times for size 10 yrs, leaving 2 sts between inc sts (202/214/226 sts). Work until body measures approx 11"(28cm)/11¾"(30cm)/13⅞"(34cm) from bottom of rib, ending after seventh or fourteenth rnd of Main Pattern. Work Pattern I, beg each size as shown on graph, working until 8 rnds of Pattern I rem.

FRONT NECK OPENING: C OFF the center 13/15/15 sts of front for neck opening. Working back and forth, beg Rs at neck edge. Cont C OFF every R at neck edge, 3 sts 2/4/4 times, 2 sts 4/0/0 times, then 1 st 4/8/8 times. Complete Pattern I, then beg back neck opening.

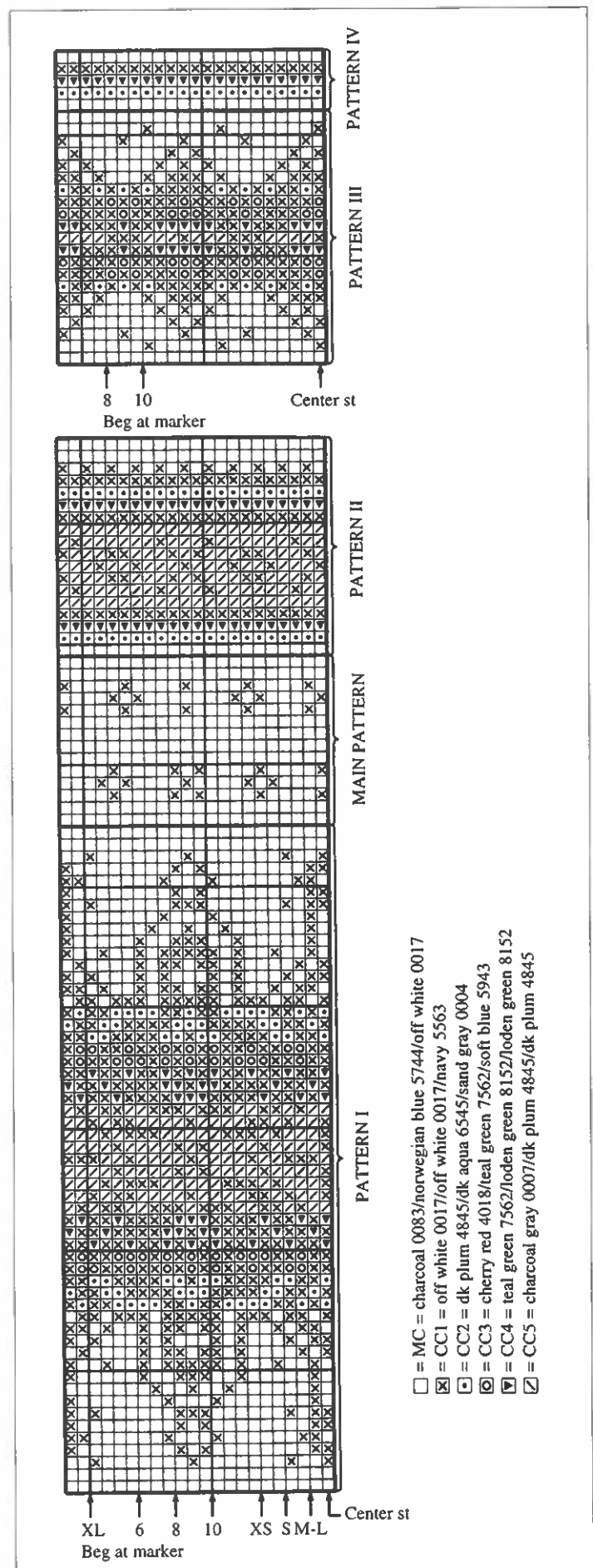
BACK NECK OPENING: Work Pattern IV and C OFF the center 21/25/25 sts of back for neck opening. Working each side of body separately, cont C OFF every other R at back neck edge, 4 sts once, then 1 st once. Complete Pattern IV, ending with a WS R. K 2 Rs with MC, then C OFF. Complete other side of body to match.

SLEEVES: With MC and dp needles in US size 2(2.5mm), C O 40/40/44 sts. Join, and working in the rnd, work rib same as body. Inc 15/17/17 sts evenly spaced on last rnd of rib (55/57/61 sts). Change to dp needles in US size 3(3mm) or 4(3.5mm), work Main Pattern, placing center st of graph at center of sleeve. AT THE SAME TIME, beg inc 1 st at beg and end of every fifth rnd 15/15/15 times, then every fourth rnd 3/5/5 times, leaving 2 sts between inc sts (91/97/101 sts). Work until sleeve measures 10⅞"(27cm)/11⅞"(29cm)/12¼"(31cm) from bottom of rib, ending after seventh or fourteenth rnd of Main Pattern. Work Pattern III, then Pattern IV, placing center st of graph at center of sleeve. K 1 rnd with MC, P 5 rnds

for facing, then C OFF. Make second sleeve to match.

FINISHING: Finish body and sleeves following instructions on page 2.

NECKBAND: With MC and dp needles in US size 2(2.5mm), pick up 90/94/98 sts along neck edge using a crochet hook and method described on page 2. Join, and working in the rnd, work Pattern IV. P 1 rnd with MC, K 6 rnds, then C OFF. Fold neckband to inside at P rnd, and sew loosely to WS.



HEILO/FALK LILLEHAMMER 1994



D	natural 0020	CC1 - norwegian blue 5744
		CC2 - dk aqua 6545
		CC3 - flame red 3918
		CC4 - gold 2537
E	charcoal 0083	CC1 - natural 0020
		CC2 - teal green 7562
		CC3 - flame red 3918
		CC4 - goldenrod 2427

SUGGESTED NEEDLE SIZES:

Cir and dp needles in US size 2(2.5mm) and 3(3mm) or 4 (3.5mm). Adjust needle sizes as needed to obtain the correct gauge.

GAUGE: 24 sts and 28 rnds of pattern = 4"(10cm) x 4"(10cm)

ADULT AND CHILD'S PULLOVER

MATERIALS: Heilo or Falk

ADULT SIZES: S M L XL

Colorways A/D

Main Color:	350	400	450	500 gr
Contrast Color 1:	450	500	550	600 gr
Contrast Color 2:	50	50	50	50 gr
Contrast Color 3:	50	50	50	50 gr
Contrast Color 4:	50	50	50	50 gr

Colorways B/C/E

Main Color:	450	500	550	600 gr
Contrast Color 1:	350	400	450	500 gr
Contrast Colors 2, 3, 4:	Same as Colorways A/D			

CHILD'S SIZES: 6 8 10 yrs

Colorways A/D

Main Color:	200	250	300 gr
Contrast Color 1:	250	300	350 gr
Contrast Color 2:	50	50	50 gr
Contrast Color 3:	50	50	50 gr
Contrast Color 4:	50	50	50 gr

Colorways B/C/E

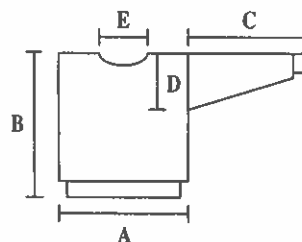
Main Color:	250	300	350 gr
Contrast Color 1:	200	250	300 gr
Contrast Colors 2, 3, 4:	Same as Colorways A/D		

COLORWAYS:

Option	Main Color	Contrast Color
A	natural 0020	CC1 - charcoal gray 0007 CC2 - charcoal 0083 CC3 - flame red 3918 CC4 - teal green 7562
B	flame red 3918	CC1 - natural 0020 CC2 - teal green 7562 CC3 - charcoal 0083 CC4 - gold 2537
C	deepest navy 5582	CC1 - natural 0020 CC2 - dk plum 4845 CC3 - dk aqua 6545 CC4 - dk plum 4845

ADULT PULLOVER

FINISHED MEASUREMENTS:



A = Chest Width:	22 ⁷ / ₈ "(23 ³ / ₈ " , 24 ³ / ₄ " , 26 ³ / ₈ ")/58cm(60cm,63cm,67cm)
B = Body Length:	26"(26 ³ / ₄ " , 27 ⁵ / ₈ " , 28 ³ / ₈ ")/66cm(68cm,70cm,72cm)
C = Sleeve Length:	18 ¹ / ₈ "(18 ⁷ / ₈ " , 19 ³ / ₄ " , 20 ¹ / ₂ ")/46cm(48cm,50cm,52cm)
D = Armhole Depth:	10 ⁵ / ₈ "(11" , 11 ³ / ₄ " , 12 ¹ / ₄ ")/27cm(28cm,30cm,31cm)
E = Neck Opening Width:	7 ¹ / ₂ "(7 ⁷ / ₈ " , 8 ¹ / ₄ " , 9")/19cm(20cm,21cm,23cm)

Watch gauge carefully to obtain the correct finished measurements!

BODY: With MC for colorways B, C and E, or CC1 for colorways A and D and cir needle in US size 2(2.5mm), C O 244/250/264/278 sts. Join, and working in the rnd, work 2³/₈"(6cm) of K 1, P 1 rib. Inc 34/40/38/44 sts evenly spaced on last rnd of rib (278/290/302/322 sts). Change to cir needle in US size 3(3mm) or 4(3.5mm) and place side markers at beg of rnd and after 139/145/151/161 sts. Work Pattern I, beg each size as shown on graph, work to marker then beg again as shown to make pattern on front and back symmetrical. *Note:* For colorways A and D, reverse MC and CC1 when working graph. Beg Main Pattern and work until body measures approx 10¹/₄"(26cm)/11"(28cm)/11³/₄"(30cm)/12⁵/₈"(32cm) from bottom of rib, ending with sixth rnd of Main Pattern. Work Pattern II, reversing MC and CC1 on last rnd for colorways A and D only. When Pattern II is complete, body should measure approx 22⁷/₈"(58cm)/23³/₈"(60cm)/24³/₈"(62cm)/25¹/₄"(64cm) from bottom of rib. Work Sleeve Pattern III. *Note:* For colorways A and D, reverse MC and CC1 when working graph. **AT THE SAME TIME,** beg front neck opening.

FRONT NECK OPENING: C OFF the center 19/19/19/21 sts of front for neck opening. Working back and forth, beg Rs at neck edge. Cont C OFF at beg of every R, 3/4/5/5 sts twice, 3 sts twice, 2 sts 4/4/4/6 times, then 1 st 6/8/8/6 times. Work until 8 Rs of Pattern III rem.

BACK NECK OPENING: C OFF the center 33/35/37/41 sts. Working each side of body separately, cont C OFF every other R at back neck edge 5 sts once, then 1 st 1/2/2/2 times. Complete Pattern III, ending with a WS R. K 2 Rs with MC for colorways B, C and E or CC1 for colorways A and D. C OFF, then complete other side of body to match.

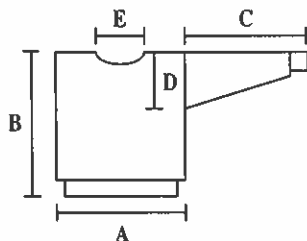
SLEEVES: With MC for colorways B, C and E or CC1 for colorways A and D and dp needles in US size 2(2.5mm), C O 46/48/50/52 sts. Join, and working in the rnd, work rib same as body. Inc 23/25/25/25 sts evenly spaced on last rnd of rib (69/73/75/77 sts). Change to dp needles in US size 3(3mm) or 4(3.5mm). Work Pattern IV, placing center st of graph at center of sleeve. *Note:* For colorways A and D, reverse MC and CC1 when working graph. **AT THE SAME TIME**, beg inc 1 st at beg and end of every fourth rnd 20/21/20/21 times, then every third rnd 9/9/14/14 times, leaving 2 sts between inc sts (127/133/143/147 sts). When Pattern IV is complete, beg Sleeve Main Pattern and work until sleeve measures approx 11³/₈"(29cm)/12¹/₄"(31cm)/13"(33cm)/13³/₄"(35cm) from bottom of rib, ending with sixth rnd of Sleeve Main Pattern. Work Pattern V. *Note:* For colorways A and D, reverse MC and CC1 on the last 14 rnds of Pattern V. When Pattern V is complete, sleeve should measure approx 18¹/₈"(46cm)/18⁷/₈"(48cm)/19³/₄"(50cm)/20¹/₂"(52cm) from bottom of rib. K 1 rnd with MC for colorways B, C and E, or CC1 for colorways A and D, P 5 rnds for facing, then C OFF. Make second sleeve to match.

FINISHING: Finish body and sleeves following instructions on page 2.

NECKBAND: With MC for colorways B, C and E, or CC1 for colorways A and D and dp needles in US size 2(2.5mm), pick up 112/120/128/128 sts along neck edge using a crochet hook and method described on page 2. Join, and working in the rnd, work Neckband Pattern. *Note:* For colorways A and D, reverse MC and CC1 when working graph. Dec 1 st over each shoulder every third rnd. When Neckband Pattern is complete, P 1 rnd with MC for colorways B, C and E or CC1 for colorways A and D. Work 14 rnds of st st, inc as for earlier dec, then C OFF. Fold neckband to inside at P rnd and sew loosely to WS.

CHILD'S PULLOVER

FINISHED MEASUREMENTS:



- A = Chest Width: 16¹/₈"(17³/₈" , 18¹/₂")/41cm(44cm,47cm)
 B = Body Length: 17³/₈"(18⁷/₈" , 20¹/₈")/44cm(48cm,53cm)
 C = Sleeve Length: 13³/₈"(14¹/₂" , 15³/₈")/34cm(37cm,39cm)
 D = Armhole Depth: 7¹/₈"(8³/₈" , 9")/20cm(22cm,23cm)
 E = Neck Opening Width: 5¹/₈"(5¹/₂" , 5¹/₂")/13cm(14cm,14cm)

Watch gauge carefully to obtain the correct finished measurements!

BODY: With MC for colorways B, C and E, or CC1 for colorways A and D and cir needle in US size 2(2.5mm), C O 174/184/198 sts. Join, and working in the rnd, work 2"(5cm) of K 1, P 1 rib. Inc 24/26/28 sts evenly spaced on last rnd of rib (198/210/226 sts). Change to cir needle in US size 3(3mm) or 4(3.5mm) and place side markers at beg of rnd and after 99/105/113 sts. Work Child's Pattern I, beg each size as shown on graph, work to marker then beg again as shown to make pattern on front and back symmetrical. *Note:* For colorways A and D, reverse MC and CC1 when working graph. For size 6 yrs, beg Child's Main Pattern and work until body measures approx 11³/₈"(29cm) from bottom of rib, ending with sixth rnd of Child's Main Pattern. For sizes 8/10 yrs, work Child's Pattern II, then beg Child's Main Pattern, working until body measures 13"(33cm)/15"(38cm) from bottom of rib, ending with sixth rnd of Child's Main Pattern. Work Child's Pattern III for all sizes. *Note:* For colorways A and D, reverse MC and CC1 when working graph. Cont until 14 rnds of Child's Pattern III rem.

FRONT NECK OPENING: C OFF the center 13/15/15 sts of front for neck opening. Working back and forth, beg Rs at neck edge. Cont C OFF at beg of every R, 3 sts 2/4/4 times, 2 sts 4/0/0 times, then 1 st 4/8/8 times. When 5 Rs of Child's Pattern III rem, beg back neck opening.

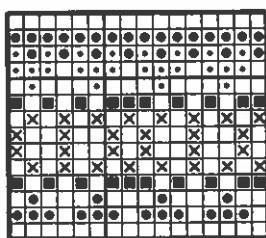
BACK NECK OPENING: C OFF the center 21/25/25 sts of back for neck opening. Working each side of body separately, cont C OFF every other R at back neck edge, 4 sts once, then 1 st once. Complete Child's Pattern III, ending with a WS R. P 1 R with MC for colorways B, C and E, or CC1 for colorways A and D, then C OFF. Complete other side of body to match.

SLEEVES: With MC for colorways B, C and E, or CC1 for colorways A and D and dp needles in US size 2(2.5mm), C O 42/44/46 sts. Join, and working in the rnd, work rib same as body. Inc 16/18/18 sts evenly spaced on last rnd of rib (58/62/64 sts). Change to dp needles in US size 3(3mm) or 4(3.5mm) and work Child's Pattern I, placing center st of graph at center of sleeve. *Note:* For colorways A and D, reverse MC and CC1 when working graph. **AT THE SAME TIME**, beg inc 1 st at beg and end of every fourth rnd 19/21/22 times, leaving 2 sts between inc sts (96/104/108 sts). Complete Child's Pattern I, then beg Child's Main Pattern, working until sleeve measures approx 11³/₈"(29cm)/8³/₈"(22cm)/9¹/₂"(24cm) from bottom of rib, ending with sixth rnd of Child's Main Pattern. For size 6 yrs (if desired) end Child's Main Pattern 7¹/₂"(19cm) from bottom of rib, then work Child's Pattern III; or work Child's Main Pattern to length indicated above, then work last 14 rnds of Child's Pattern III. For sizes 8/10 yrs, work Child's Pattern III only. *Note:* For colorways A and D, reverse MC and CC1 on the last 14 rnds of Child's Pattern III. K 1 rnd with MC for colorways B, C and E, or CC1 for colorways A and D, P 5 rnds for facing, then C OFF. Make second sleeve to match.

FINISHING: Finish body and sleeves following instructions on page 2.

NECKBAND: With MC for colorways B, C and E, or CC1 for colorways A and D, pick up 96/104/104 sts along neck edge same as adult pullover. Join, and working in the rnd, work Child's Neckband Pattern. P 1 rnd with MC for colorways B, C and E, or CC1 for colorways A and D, work 12 rnds of st st, then C OFF. Fold neckband to inside at P rnd and sew loosely to WS.

NECKBAND PATTERN



- = MC = natural 0020/flame red 3918/deepest navy 5655/natural 0020/charcoal 0083
- ⊗ = CC1 = charcoal gray 0007/natural 0020/natural 0020/norwegian blue 5744/natural 0020
- ⊙ = CC2 = charcoal 0083/teal green 7562/dk plum 4845/dk aqua 6545/teal green 7562
- ⊠ = CC3 = flame red 3918/charcoal 0083/dk aqua 6545/flame red 3918/flame red 3918
- = CC4 = teal green 7562/gold 2537/dk plum 4845/gold 2537/goldenrod 2427

Note: For colorways A and D, MC and CC1 should be reversed when working Pattern III, Pattern IV and last 14 rnds of Pattern V.

PATTERN II

MAIN PATTERN

PATTERN I

Odin

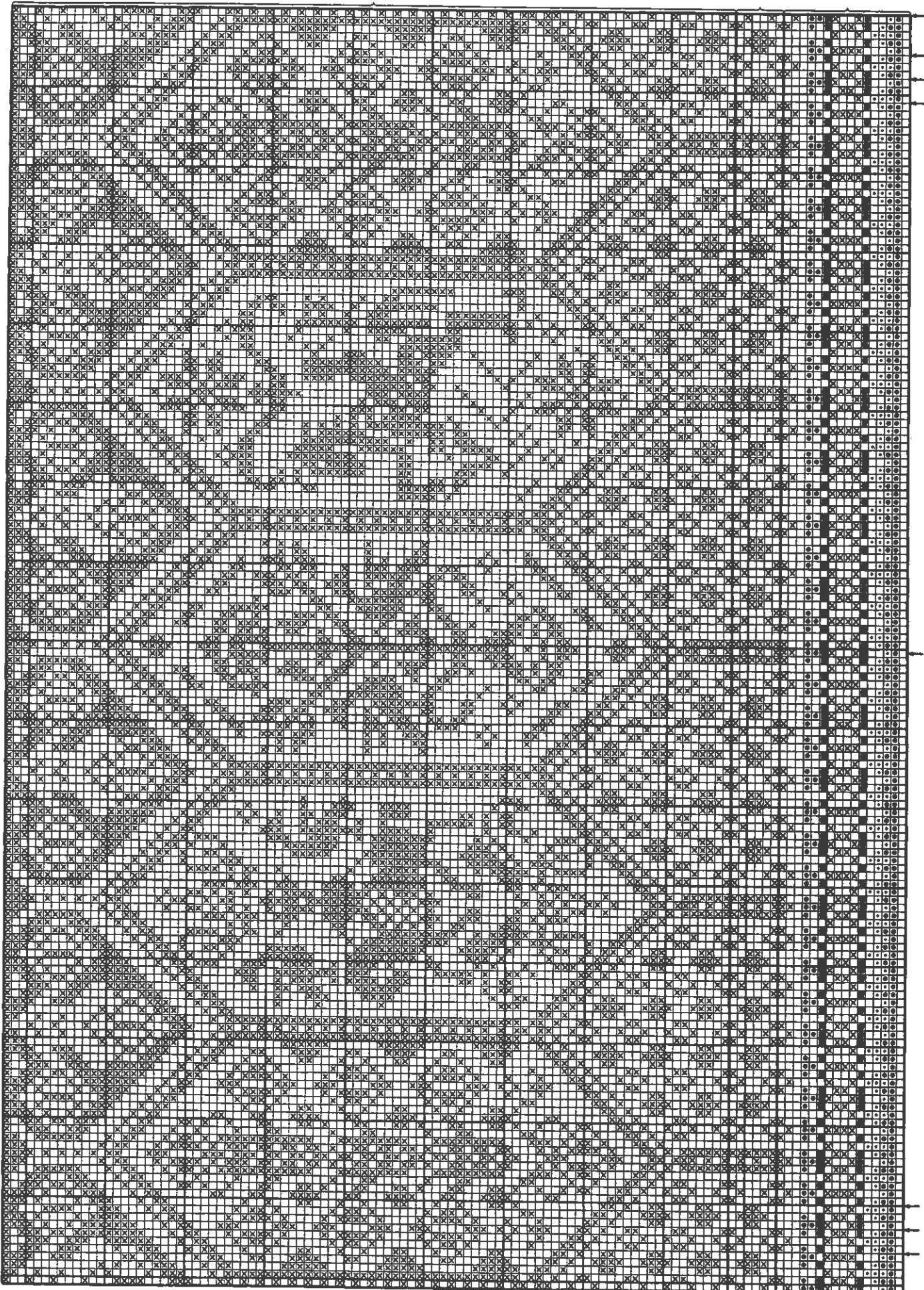
Mugin & Munin

Froya

XL
L
M
S

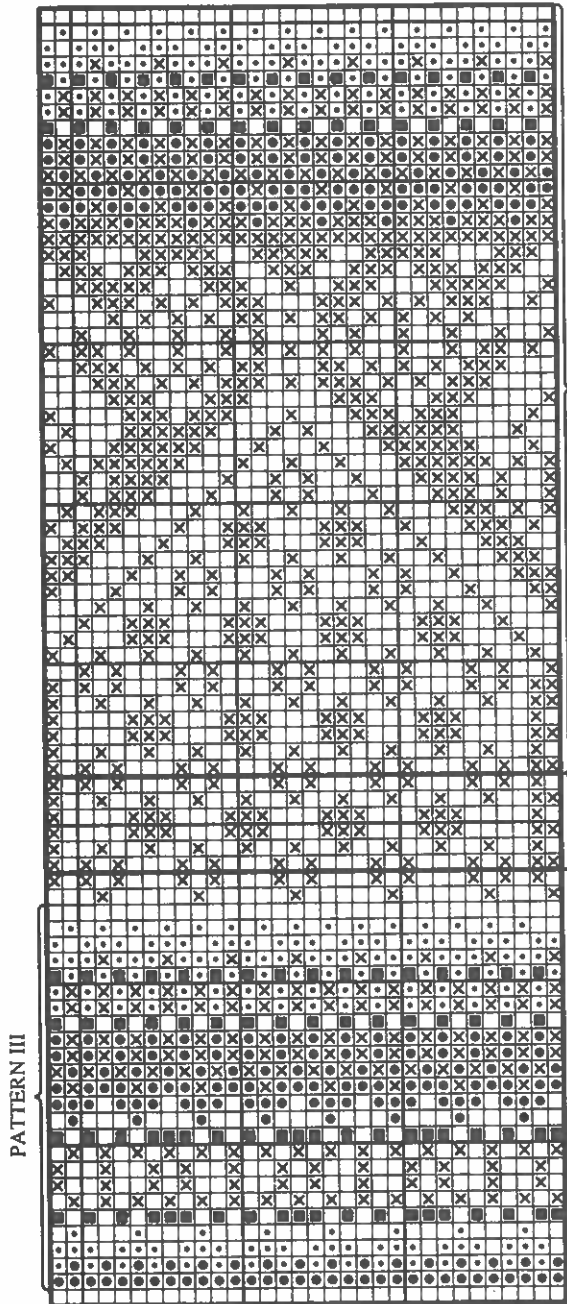
Center st of front/back

XL
L
M
S

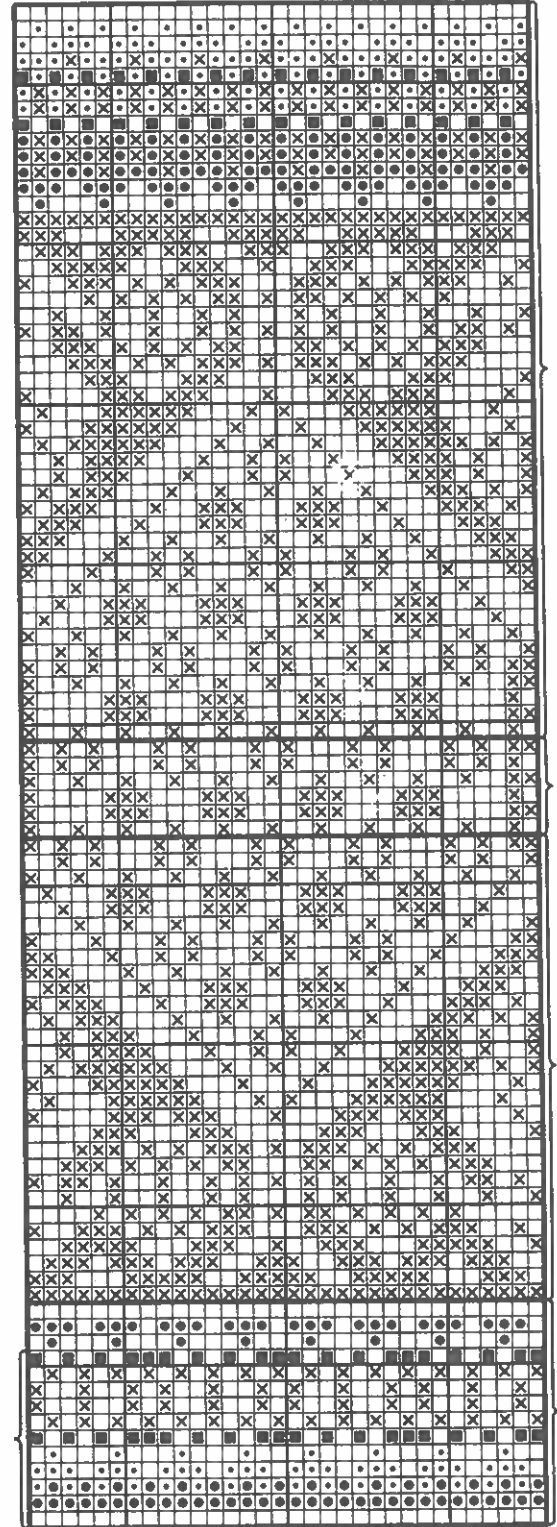


SLEEVE

CHILD'S PULLOVER



Center st of sleeve



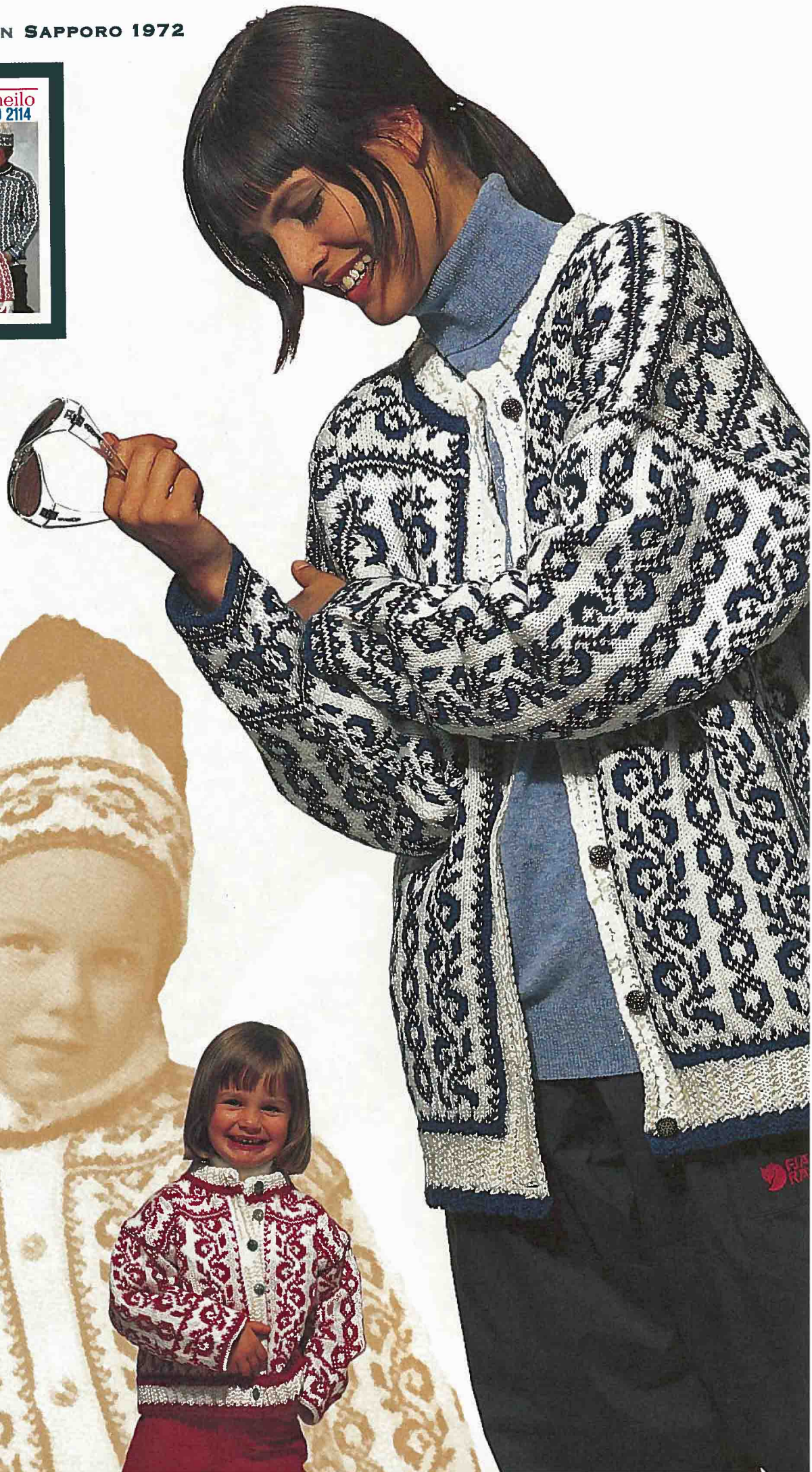
6 8 10 Center st of sleeve and front/back

- = MC = natural 0020/flame red 3918/deepest navy 5655/natural 0020/charcoal 0083
- ⊗ = CC1 = charcoal gray 0007/natural 0020/natural 0020/norwegian blue 5744/natural 0020
- = CC2 = charcoal 0083/teal green 7562/dk plum 4845/dk aqua 6545/teal green 7562
- ▣ = CC3 = flame red 3918/charcoal 0083/dk aqua 6545/flame red 3918/flame red 3918
- = CC4 = teal green 7562/gold 2537/dk plum 4845/gold 2537/goldenrod 2427

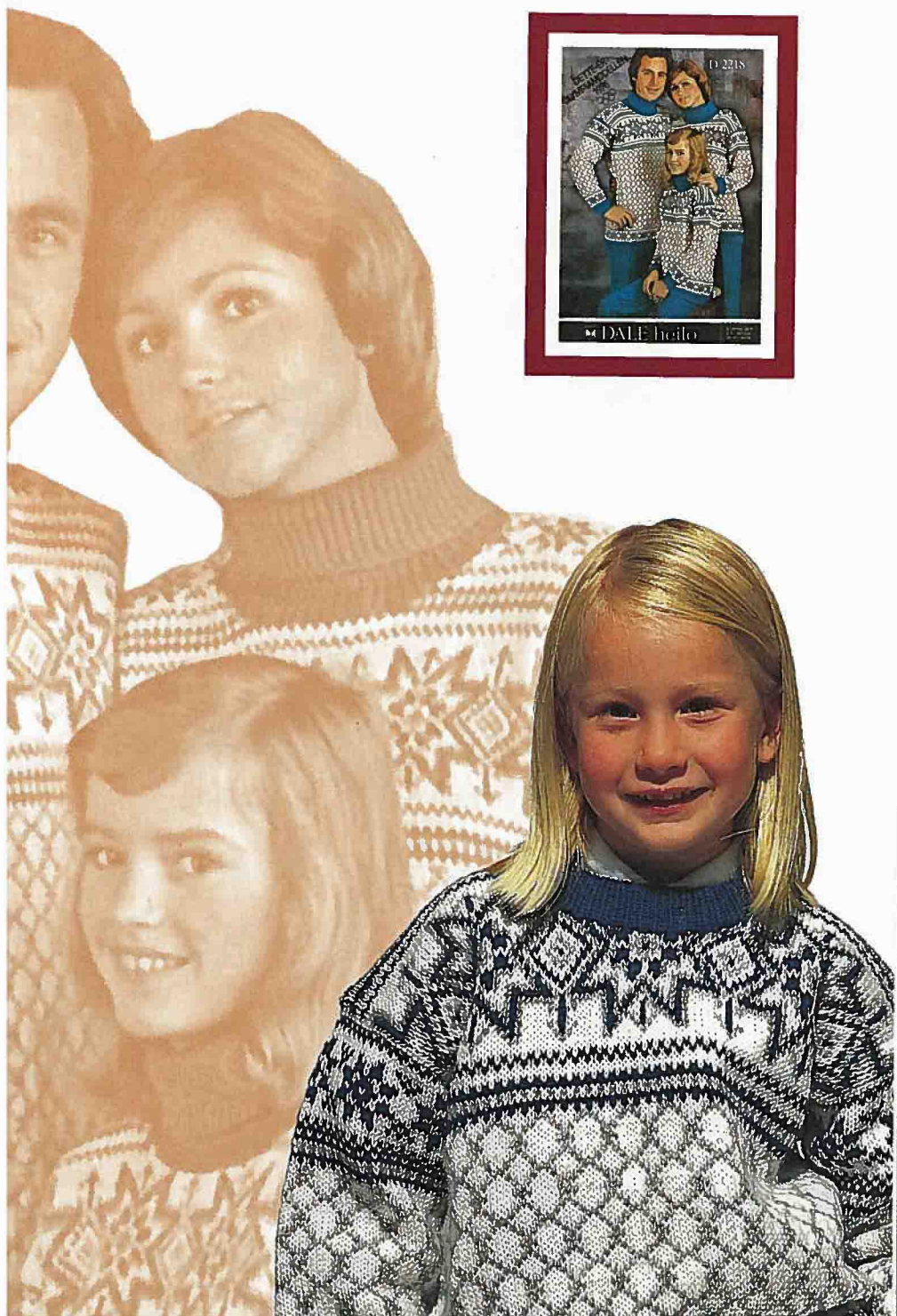
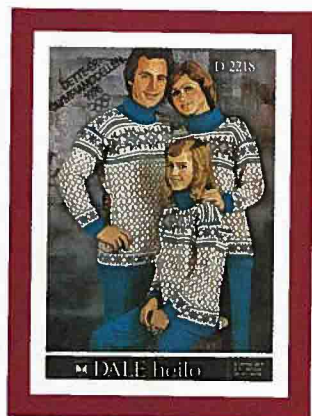
Note: For colorways A and D, MC and CC1 should be reversed when working Pattern III, Pattern IV and last 14 rnds of Pattern V.

L-GENSEREN GRENOBLE 1968





OL-GENSEREN INNSBRUCK 1976



OL-GENSEREN LAKE PLACID 1980



OL-GENSEREN CALGARY 1988

