

NR-8791

Dale of Norway Christmas Stockings



Dale of Norway

Christmas Stockings

During the short, cold days of winter Christmas is a bright, warm time. It's filled with festive lights, greenery brought indoors and gatherings of family and friends.

Christmas stockings have become a part of the holiday celebrations for many, whether used as part of traditional gift giving or simply as decoration.

We hope you enjoy making and giving these special stockings inspired by traditional Norwegian motifs and designs. Knit in Heilo and Harlequin, these stockings are sure to be treasured for many years to come.

You can find these yarns at your local authorized Dale of Norway yarn shop.



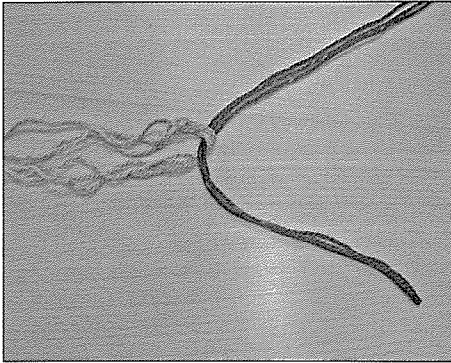




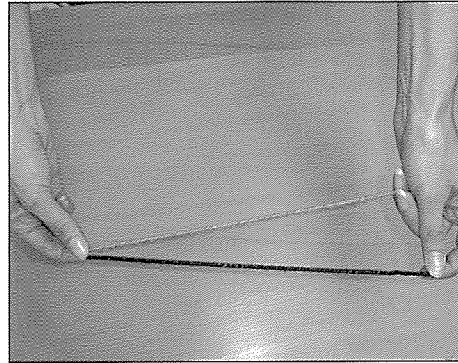
Dale of Norway

Dale of Norway, Inc.
4750 Shelburne Rd., Suite 20
Shelburne, VT 05482
Telephone: 802-383-0132 • Fax: 802-383-0133
www.daleofnorway.com

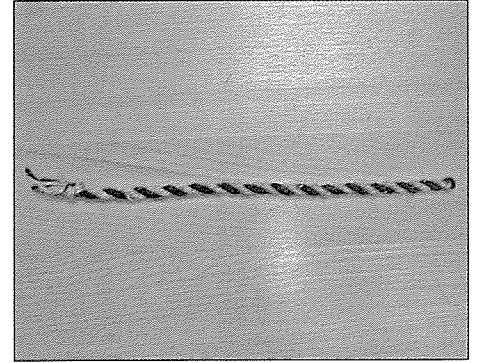
MAKING A 2-COLOR TWISTED CORD



1. Fold strands of first color in half and knot ends tog. Slip strands of second color through loops in end of first color and knot ends.



2. Twist yarn to form a cord, folding where strands loop through each other.



3. Finished cord.

GAUGE

It is important to maintain the correct gauge while knitting because the finished measurements and shape of your garment are completely dependent upon gauge. If you knit looser than the gauge given in the pattern instructions, try needles one size smaller. If you knit tighter, try needles one size larger.



ABBREVIATIONS

approx = approximately	MC = main color
beg = begin(ning)	mm = millimeter(s)
C O = cast on	p = purl
C OFF = cast off	p-wise = purlwise, as if to purl
CC = contrast color	pssso = pass slipped stitch(es) over
cn = cable needle	p2tog = purl 2 stitches together
cir = circular	rem = remain(ing)(der)
cm = centimeter(s)	rep = repeat(s)(ing)
cont = continu(e)(ing)	rnd(s) = round(s)
dec = decreas(e/s)(ing)	RS = right side(s)
dp = double pointed	st(s) = stitch(es)
g st = garter stitch	St st = stockinette stitch
gr = gram(s)	tbl = through the back of the loop(s)
inc = increas(e/s)(ing)	tog = together
k = knit	WS = wrong side(s)
k-wise = knitwise, as if to knit	yd(s) = yard(s)
k2tog = knit 2 stitches together	yo = yarn over needle to make 1 stitch
m = meter(s)	

HARLEQUIN

35% Wool/25% Microfiber/20% Alpaca/10% Cashmere/10% Viscose Worsted Weight yarn. *Care instructions:* Hand wash in cold water using mild/neutral detergent. Dry flat; do not put in dryer. May be dry cleaned.

HEILO

100% Pure New Classic Norwegian Sport Weight Wool. *Care instructions:* Hand wash in cold water using mild/neutral detergent. Dry flat; do not put in dryer. May be dry cleaned.



Do not
bleach



Gentle
cycle spin



Steam lightly with
steam iron, if needed



Dry Clean with perchlorethylene
using normal methods

The patterns in this book have been developed and tested by our design division. Every effort has been made to make the knitting directions in this book as accurate as possible. However, we cannot be responsible for variations due to individual knitters, human error or typographical mistakes.

Copyright 2008, Dale of Norway, Inc. First edition. All rights reserved. No portion of this book may be copied, leased, resold or otherwise distributed without the written permission of Dale of Norway, Inc. For further information write: Dale of Norway, 4750 Shelburne Road, Shelburne, VT 05482.

**MATERIALS: Harlequin**

Color 1: 100 gr autumn gold 2537
Color 2: 50 gr red 0008

SUGGESTED NEEDLE SIZES: Cir and dp needles in size 4.5mm, st holders and markers. **Note:** US and metric needle sizes often do not match exactly and size equivalencies have changed. The original version of this pattern was written to use metric size needles; if in doubt as to whether a given US needle size is the same as a metric size, use the metric size needle. As always, please take the time to check your gauge carefully and change needle sizes as needed to obtain the correct gauge.

GAUGE: 18 sts and 24 rnds over color work pattern = 4" (10cm) x 4" (10cm).

FINISHED MEASUREMENTS:

A = Circumference: 15 $\frac{3}{4}$ " (40cm)
B = Cuff Height: 4" (10cm)
C = Length to Heel: 13" (33cm)
D = Length Heel to Toe: 10 $\frac{3}{8}$ " (26.5cm)

Watch gauge carefully to obtain the correct finished measurements!

CUFF: With cir needle and Color 1, C O 72 sts. Join and, working in the rnd, mark beg of rnd and beg rnds at center back. Work 3 rnds of k1, p1 rib. Work Pattern I, then p 1 rnd with Color 1 for fold line.

LEG: Turn cuff with WS facing (WS now becomes RS). K 1 rnd and dec 2 sts evenly spaced across rnd (70 sts). Cont St st with Color 1 until leg measures approx 3 $\frac{1}{2}$ " (9cm) from fold line. K 1 rnd and inc 2 sts evenly spaced across rnd (72 sts). Work Pattern II. Beg Main Pattern and cont 6-rnd rep until leg measures 10" (25.5cm) from fold line, ending with a rnd 1 or 4 of rep.

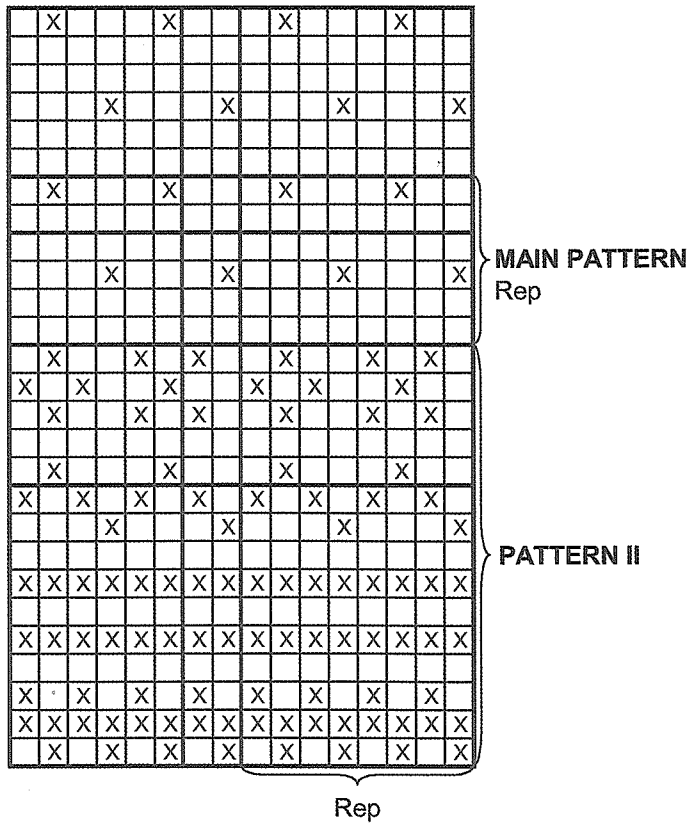
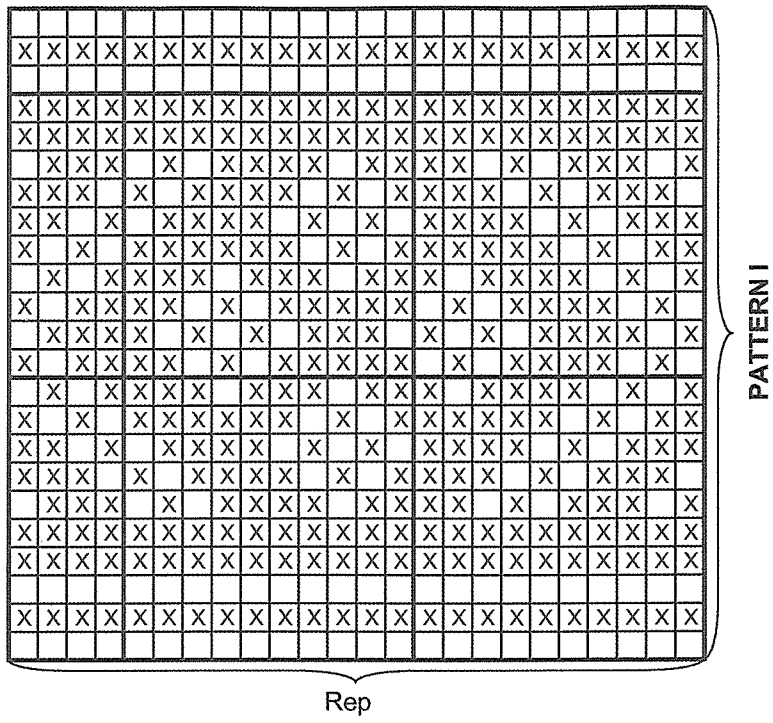
HEEL: Change to Color 2. Working back and forth over first and last 18 sts of rnd, slip rem 36 sts to st holders. K to 1 st before end of row, then turn. Slip first st and tighten it slightly, p to 1 st before end of row, then turn. Slip first st and tighten it slightly, k to 2 sts before end of row, then turn. Slip first st and tighten it slightly, p to 2 sts before end of rnd, then turn. Cont working in this manner 7 times more for each side, working 1 less st at end of each row; 18 sts rem in work at center of heel. Next row, slip first st and tighten it slightly, work to where row was turned before, lift horizontal strand between sts and slip it twisted onto left needle, work it and next st tog, then turn. Rep this row until all heel sts are back in work.

FOOT: With RS facing, slip sts from holders back to cir needle, cut yarn and slip first 18 sts from left needle to right needle. Join and, working in the rnd again, beg rnds at center under foot. Beg with next rnd of graph and, AT THE SAME TIME, dec 8 sts evenly spaced across bottom of stocking, working pattern as set over top of foot and adjusting placement of pattern across bottom

(64 sts). Cont without further shaping until foot measures approx 8 $\frac{5}{8}$ " (22cm) from heel, ending with a rnd 1, 2, 4 or 5 of rep.

TOE: Change to dp needles and Color 2, then k 1 rnd. Next rnd, * k 6 sts, k2tog; rep from * to end of rnd (56 sts). K 1 rnd without dec. Next rnd, * k 5 sts, k2tog; rep from * to end of rnd (48 sts). K 1 rnd without dec. Cont dec next rnd, then every other rnd 4 times more, with 1 less st between dec sts each time. Gather rem 8 sts on a piece of yarn and fasten securely.

FINISHING: Lay stocking out to finished measurements and steam lightly. Fold top edge to outside along fold line and steam lightly. Cut 3 strands of each color, each approx 37 $\frac{3}{4}$ " (96cm) long. Holding strands of Color 1 tog, fold in half and knot ends tog. Slip strands of Color 2 through loop in end of Color 1 and knot ends. Twist yarn to form a cord, folding where strands loop through each other. Secure end of cord. Beg at center back of stocking at fold line, lay cord along edge, then securely sew cord to fold edge, leaving enough to form hanging loop at center back. Tuck ends of cord under cuff between layers and tack to WS. If desired, tightly knot ends of cord before tacking to WS and trim, leaving approx $\frac{5}{8}$ " (1.5cm) on each end and allow ends to untwist.



□ = C1 = autumn gold 2537

⊠ = C2 = red 0008



MATERIALS: Harlequin

Main Color : 100 gr evergreen 7562
 Contrast Color 1: 50 gr autumn gold 2537
 Contrast Color 2: 50 gr red 0008
 Contrast Color 3: 50 gr purple 5072

SUGGESTED NEEDLE SIZES: Cir and dp needles in size 4.5mm, st holders and markers. **Note:** US and metric needle sizes often do not match exactly and size equivalencies have changed. The original version of this pattern was written to use metric size needles; if in doubt as to whether a given US needle size is the same as a metric size, use the metric size needle. As always, please take the time to check your gauge carefully and change needle sizes as needed to obtain the correct gauge.

GAUGE: 18 sts and 24 rnds over color work pattern = 4" (10cm) x 4" (10cm).

ACCESSORIES: Large seed beads in red and gold, sewing thread and needle.

FINISHED MEASUREMENTS:

A = Circumference: 15¾" (40cm)
 B = Length to Heel: 13" (33cm)
 C = Length Heel to Toe: 10¾" (26.5cm)

Watch gauge carefully to obtain the correct finished measurements!

LEG: With cir needle and MC, C O 72 sts. Join and, working in the rnd, mark beg of rnd and beg rnds at center back. Work 3 rnds of k1, p1 rib. Beg St st and work Pattern I. Beg Main Pattern and work until leg measures 10" (25.5cm) from bottom of rib, ending with a complete stripe in CC1 or CC2.

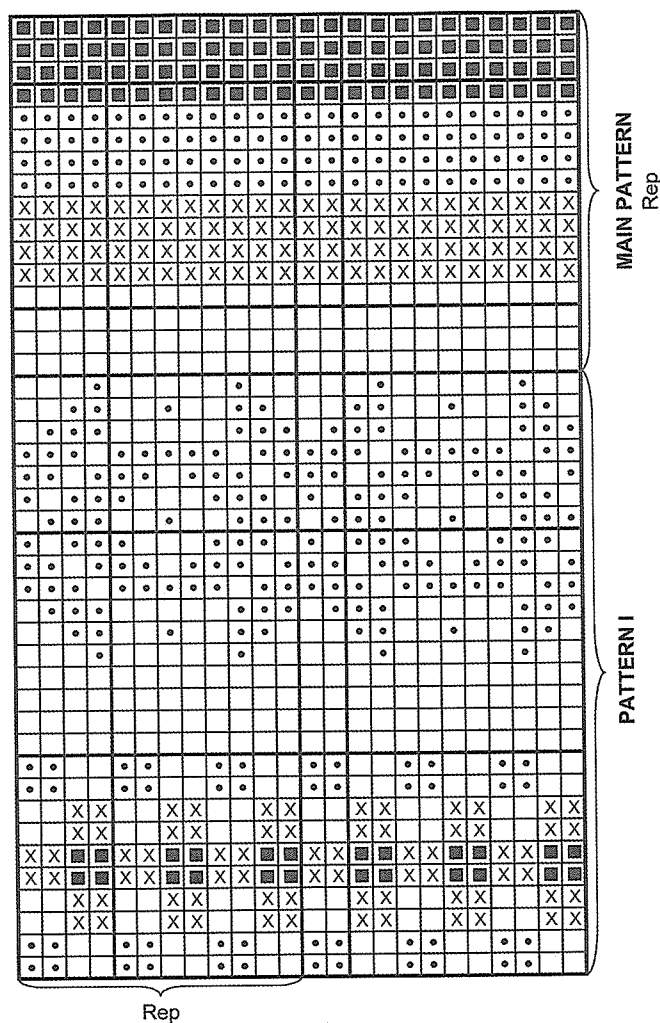
HEEL: Change to MC. Working back and forth over first and last 18 sts of rnd, slip rem 36 sts to st holders. K to 1 st before end of row, then turn. Slip first st and tighten it slightly, p to 1 st before end of row, then turn. Slip first st and tighten it slightly, k to 2 sts before end of row, then turn. Slip first st and tighten it slightly, p to 2 sts before end of row, then turn. Cont working in this manner 7 times more for each side, working 1 less st at end of each row; 18 sts rem in work at center of heel. Next row, slip first st and tighten it slightly, work to where row was turned before, lift horizontal strand between sts and slip it twisted onto left needle, work it and next st tog, then turn. Rep this row until all heel sts are back in work.

FOOT: With RS facing, slip sts from holders back to cir needle, cut yarn and slip first 18 sts from left needle to right needle. Join and, working in the rnd again, beg rnds at center under foot. Beg with next rnd of graph and, AT THE SAME TIME, dec 8 sts evenly spaced across bottom of stocking (64 sts). Cont without

further shaping until foot measures approx 8⅝" (22cm) from heel, ending with a contrast color stripe.

TOE: Change to dp needles and MC, then k 1 rnd. Next rnd, * k 6 sts, k2tog; rep from * to end of rnd (56 sts). K 1 rnd without dec. Next rnd, * k 5 sts, k2tog; rep from * to end of rnd (48 sts). K 1 rnd without dec. Cont dec next rnd, then every other rnd 4 times more, with 1 less st between dec sts each time. Gather rem 8 sts on a piece of yarn and fasten securely.

FINISHING: Lay stocking out to finished measurements and steam lightly. Securely sew seed beads to stocking as shown in photo, evenly spacing beads across stripes with approx 5 sts between beads. Make sure to alternate bead colors and sew gold beads to CC2 and CC3 stripes, and red beads to MC and CC1 stripes as shown.



- = C1 = evergreen 7562
- ◻ = C2 = autumn gold 2537
- ◼ = C3 = purple 5072
- ⊗ = C4 = red 0008

**MATERIALS: Heilo**

Main Color :	100 gr	medium sheep heather 3841
Contrast Color 1:	50 gr	tartan green 7562
Contrast Color 2:	50 gr	barn red 4137
Contrast Color 3:	50 gr	natural 0020
Contrast Color 4:	50 gr	ochre 2434
Contrast Color 5:	50 gr	moss green 9335

SUGGESTED NEEDLE SIZES: Cir and dp needles in size 3mm or 3.5mm, crochet hook in size 2.5mm or 3mm, blunt tapestry needle, st holders and markers. **Note:** US and metric needle sizes often do not match exactly and size equivalencies have changed. The original version of this pattern was written to use metric size needles; if in doubt as to whether a given US needle size is the same as a metric size, use the metric size needle. As always, please take the time to check your gauge carefully and change needle sizes as needed to obtain the correct gauge.

GAUGE: 24 sts and 28 rnds over color work pattern = 4" (10cm) x 4" (10cm).

FINISHED MEASUREMENTS:

- A** = Circumference: 15¾" (40cm)
B = Cuff Height: 3⅛" (8cm)
C = Length to Heel: 13" (33cm)
D = Length Heel to Toe: 10¼" (26cm)

Watch gauge carefully to obtain the correct finished measurements!

CUFF: With cir needle and MC, C O 96 sts. Join and, working in the rnd, mark beg of rnd and beg rnds at center back. Work Pattern I, then p 1 rnd for fold line.

LEG: Turn cuff with WS facing (WS now becomes RS). K 1 rnd with MC and dec 3 sts evenly spaced across rnd (93 sts). Cont St st with MC until leg measures approx 3⅞" (8.5cm) from fold line. K 1 rnd and inc 3 sts evenly spaced across rnd (96 sts). Beg Pattern II and work until leg measures 10" (25.5cm) from fold line, ending with a half or full stripe.

HEEL: Change to CC1. Working back and forth over first and last 24 sts of rnd, slip rem 48 sts to st holders. Cont st st and work until heel measures 3" (7.5cm), ending with a WS row. Next row, k 27 sts, k2tog, k 1 st, then turn. Slip first st and tighten it slightly, p next 7 sts, p2tog, p 1 st, then turn. Slip first st and tighten it slightly, k next 8 sts, k2tog, k 1 st, then turn. Slip first st and tighten it slightly, p next 9 sts, p2tog, p 1 st, then turn. Cont working in this manner, working 1 more st at end of each row until all heel sts have been worked (28 sts).

INSTEP: With RS facing and appropriate background color for next rnd of graph, pick up 16 sts along side of heel using a crochet hook ½-metric size smaller than needles to pick up sts k-wise, k heel sts and dec 2 sts, pick up 16 sts along rem side of heel and place marker for instep, then work pattern as set to beg of rnd

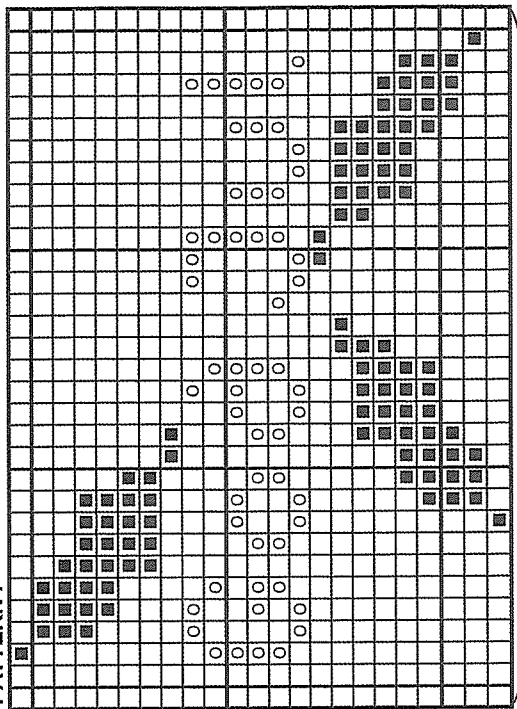
and place marker for instep (106 sts). Cut yarns and slip next 29 sts from left needle to right needle. Reattach yarns and, working in the rnd again, beg rnds at center under foot and mark beg of rnd. Next rnd, adjusting pattern rep placement across sides and bottom of foot to match pattern rep across top of foot, work to 2 sts before instep marker, k2tog, work to next instep marker, ssk, then work to end of rnd (104 sts). Cont dec in this manner every rnd 10 times more (82 sts).

FOOT: Work without further dec until foot measures 7½" (19cm) from heel, ending with a full stripe if possible, or half of a wide stripe.

TOE: Change to CC1 and dp needles, and place side markers 21 sts out from beg and 20 sts before end of rnd. Next rnd, k 18 sts, k2tog, k 1 st, ssk, k 36 sts, k2tog, k 1 st, ssk, then k rem 18 sts (78 sts). K 1 rnd without dec. Cont dec next rnd, then every other rnd 9 times more, with fewer sts between dec sts each time, ending with a dec rnd (38 sts). Dec next rnd as before and, AT THE SAME TIME, dec 1 st at the beg and center of rnd (32 sts). Slip sts to 2 dp needles, with 16 sts from top of foot on one needle and rem 16 sts from bottom of foot on second needle. Using blunt tapestry needle threaded with CC1, join sts at toe using Kitchener St.

FINISHING: Thread blunt tapestry needle with CC1 and, with RS of cuff facing, work ivy leaves in Duplicate St embroidery as shown on graph. Lay stocking out to finished measurements and steam lightly. Fold top edge of stocking to outside along fold line to form cuff and steam lightly. With a double strand of CC2, work French knots for berries. With single strand of CC5 and CC4, work pine branches using Straight and Stem sts as shown in photo. Cut 3 strands each of CC1 and CC2, each approx 37¾" (96cm) long. Holding strands of CC1 tog, fold in half and knot ends tog. Slip strands of CC2 through loop in end of CC1 and knot ends. Twist yarn to form a cord, folding where strands loop through each other. Secure end of cord. Beg at center back of stocking at fold line, lay cord along edge, then securely sew cord to fold edge, leaving enough to form hanging loop at center back. Tuck ends of cord under cuff between layers and tack to WS. If desired, tightly knot ends of cord before tacking to WS and trim, leaving approx ⅝" (1.5cm) on each end and allow ends to untwist.

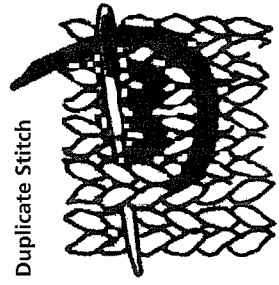
PATTERN I



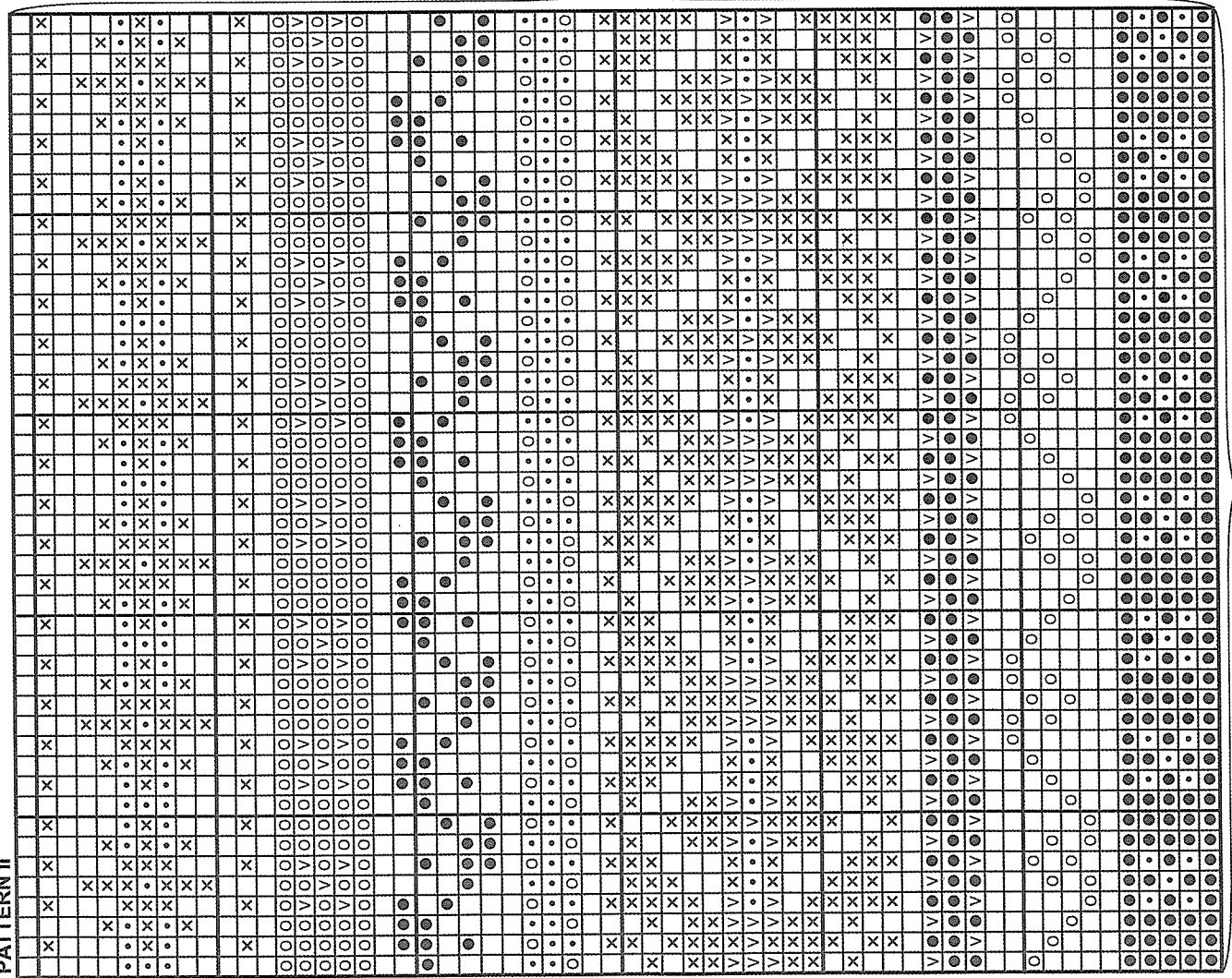
Rep

- ☐ = MC = med sheep hea 3841
- = CC1 = tartan green 7562
- = CC1 = k with MC, then work in Duplicate St embroidery when complete
- = CC2 = barn red 4137
- ✕ = CC3 = natural 0020
- ∇ = CC4 = ochre 2434
- = CC5 = moss green 9335

Duplicate Stitch

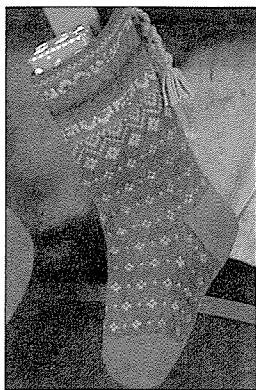


PATTERN II



Rep

Rep

**MATERIALS: Heilo**

Main Color:	100 gr	tartan green 7562
Contrast Color 1:	50 gr	bronze 9834
Contrast Color 2:	50 gr	fern green 9155
Contrast Color 3:	50 gr	cranberry 4227
Contrast Color 4:	50 gr or remnants	antique rose 4232
Contrast Color 5:	50 gr or remnants	dark plum 4845
Contrast Color 6:	50 gr or remnants	deep teal 6664

SUGGESTED NEEDLE SIZES: Cir needle in size 2.5mm, cir and dp needles in size 3mm or 3.5mm, crochet hook in size 2.5mm or 3mm, blunt tapestry needle, st holders and markers.

Note: US and metric needle sizes often do not match exactly and size equivalencies have changed. The original version of this pattern was written to use metric size needles; if in doubt as to whether a given US needle size is the same as a metric size, use the metric size needle. As always, please take the time to check your gauge carefully and change needle sizes as needed to obtain the correct gauge.

GAUGE: 24 sts and 28 rnds over color work pattern = 4" (10cm) x 4" (10cm).

FINISHED MEASUREMENTS:

A = Circumference: 15¾" (40cm)

B = Length to Heel: 13" (33cm)

C = Length Heel to Toe: 10¼" (26cm)

Watch gauge carefully to obtain the correct finished measurements!

LEG: With smaller cir needle and MC, C O 96 sts. Join and, working in the rnd, mark beg of rnd and beg rnds at center back. Work 1⅛" (3cm) of St st, then p 1 rnd for fold line. Change to larger cir needle. Work first 3 rnds of Pattern I. Next rnd, k 2 sts as set, k2tog, yo, k to 4 sts before end of rnd, yo, k2tog, then k rem 2 sts. Complete pattern. Beg Main Pattern and cont 16-rnd rep until leg measures 10" (25.5cm) from fold line, ending with a rnd 1 or 8 of rep.

HEEL: Change to CC3. Working back and forth over first and last 24 sts of rnd, slip rem 48 sts to st holders. Cont st st and work until heel measures 3" (7.5cm), ending with a WS row. Next row, k 27 sts, k2tog, k 1 st, then turn. Slip first st and tighten it slightly, p next 7 sts, p2tog, p 1 st, then turn. Slip first st and tighten it slightly, k next 8 sts, k2tog, k 1 st, then turn. Slip first st and tighten it slightly, p next 9 sts, p2tog, p 1 st, then turn. Cont working in this manner, working 1 more st at end of each row until all heel sts have been worked (28 sts).

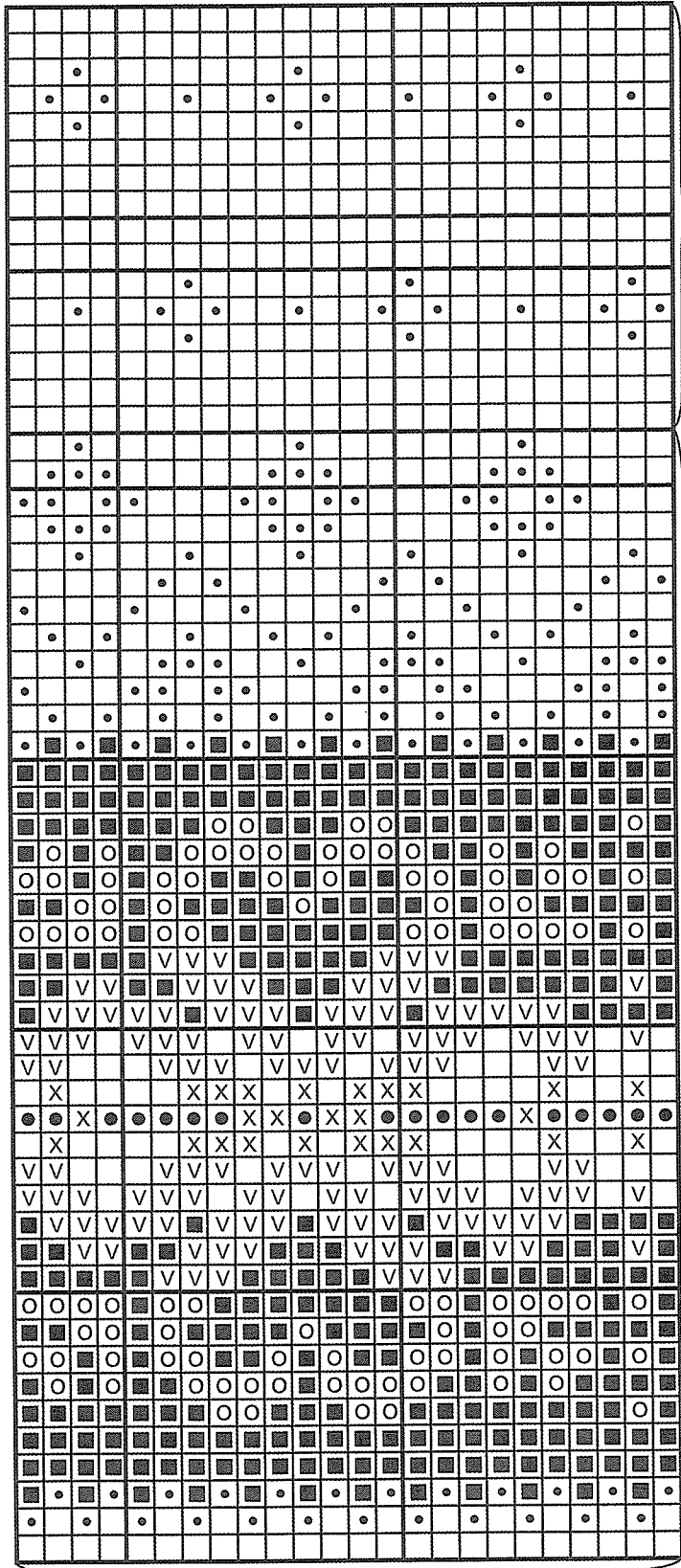
INSTEP: With RS facing and MC, pick up 15 sts along side of heel using a crochet hook ½-metric size smaller than needles to pick up sts k-wise, k heel sts and dec 2 sts, pick up 15 sts along rem side of heel and place marker for instep, then work pattern as set to beg of rnd and place marker for instep (104 sts). Cut yarns and

slip next 29 sts from left needle to right needle. Reattach yarns and, working in the rnd again, beg rnds at center under foot and mark beg of rnd. Next rnd, adjusting pattern rep placement across sides and bottom of foot to match pattern rep across top of foot, work to 2 sts before instep marker, k2tog, work to next instep marker, ssk, then work to end of rnd (102 sts). Cont dec every rnd 11 times more in this manner (80 sts).

FOOT: Work without further dec until foot measures 7½" (19cm) from heel, ending with at least 2 rnds of MC.

TOE: Change to CC3 and dp needles, and place side markers 20 sts out from beg and end of rnd. Next rnd, k 17 sts, k2tog, k 2 sts, ssk, k next 34 sts, k2tog, k 2 sts, ssk, then k rem 17 sts (76 sts). K 1 rnd without dec. Cont dec next rnd, then every other rnd 9 times more, with fewer sts between dec sts each time (36 sts). Slip sts to 2 dp needles, with 18 sts from top of foot on one needle and rem 18 sts from bottom of foot on second needle. Using blunt tapestry needle threaded with CC3, join sts at toe using Kitchener St.

FINISHING: Lay stocking out to finished measurements and steam lightly. Turn top edge to inside along fold line and sew neatly to WS. Cut 12 strands of CC1 approx 48" (122cm) long, and make a twisted cord. Thread cord through eyelets at top of stocking, then adjust to desired length. Make 2 tassels with CC1, each approx 2¾" (7cm) long. Securely attach a tassel to each end of cord.



MAIN PATTERN
Rep

PATTERN I

- ☐ = MC = tartan green 7562
- = CC1 = bronze 9834
- = CC2 = fern green 9155
- ∇ = CC3 = cranberry 4227
- = CC4 = antique rose 4232
- X = CC5 = dk plum 4845
- ◐ = CC6 = dp teal 6664

Rep

8701 Christmas Stocking Book

Color Suggestions using Falk and Freestyle

8701-1 Freestyle (Interchangeable with Harlequin)

Color 1: 100 gr 8045 Green

Color 2: 50 gr 4018 Red

8701-2 Freestyle (Interchangeable with Harlequin)

Main Color: 100 gr 8045 Green

Contrast Color 1: 50 gr 0010 White

Contrast Color 2: 50 gr 4018 Red

Contrast Color 3: 50 gr 5072 Purple

8701-3 Falk (Interchangeable with Heilo)

Main Color: 100 gr 3841 Medium Sheep Heather

Contrast Color 1: 50 gr 8246 Green

Contrast Color 2: 50 gr 4137 Barn Red

Contrast Color 3: 50 gr 0020 Natural

Contrast Color 4: 50 gr 2642 Caramel

Contrast Color 5: 50 gr 9133 Palm

8701-4 Falk (Interchangeable with Heilo)

Main Color: 100 gr 8246 Green

Contrast Color 1: 50 gr 9725 (Lt. Green) or 2642 (Caramel)

Contrast Color 2: 50 gr 9155 Fern Green

Contrast Color 3: 50 gr 4227 Cranberry

Contrast Color 4: 50 gr 4203 lt. Pink

Contrast Color 5: 50 gr 4536 Purple Rose

Contrast Color 6: 50 gr 7053 Teal