

NR 209

# DALEGARN

## AKVARIET

Dale Baby Ull  
Falk  
Freestyle



DALEGARN

[dalegarn.no](http://dalegarn.no)

Nr. 20901 (forsiden)  
Design: Kari Haugen  
Freestyle, str 1-4 år

Nr. 20902  
Design: Kari Haugen  
Falk, str 2-6 år



# DALEGARN

## Akvariet

Kolleksjonen i dette heftet er laget i samarbeid med Akvariet i Bergen. Akvariet i Bergen har helt siden de åpnet i 1960 gledet både turister og Bergens befolkning med gode opplevelser. I dette hefte presenterer Dalegarn en flott kolleksjon der inspirasjonen er hentet fra Akvariet. Strikk en nydelig aqua farget fiskestimgenser, eller en skummel hai i intarsia strikk. Flott anemonefiskgenser med raglanfelling eller en nydelig kjole med lange armer. Det er også mulig å strikke en pingvindrakt til de aller minste. Kolleksjonen er strikket i Dalegarns myke og gode garnkvaliteter Dale Baby Ull, Falk og Freestyle.



Nr. 20903  
Design: Kari Haugen  
Falk, str 2-8 år



## NORWEGIAN PATTERNS

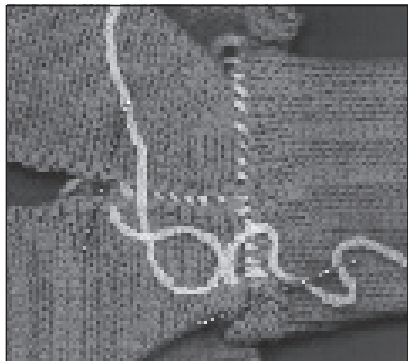
**Most Norwegian knitting designs, especially those involving color work, are symmetrical in nature along central stitches of both front and back.** Thus, due to the complexity of Norwegian patterning, an even number of repeats often does not occur as in Fair Isle knitting; the knitter is instructed to place markers at specified points in the work, marking the patterns' side edges. It is important to take care when reading instructions and charts to keep the designs centered on both the garment's front and back. To work from a Norwegian pattern graph begin at the first marker (left side of front for pullovers or right front opening for cardigans) with the stitch marked "Beg here" on the graph and work to the next marker (right side of front/back for pullovers and cardigans). Work the back of the body, beginning again as instructed on the graph. For pullovers, complete the round or for cardigans, work to the next marker and begin the left front so that the left front is a mirror image of the right front. The pattern will be centered on both front and back of the garment, matching at the shoulders.

## SIZES & GAUGE

**Study the finished measurements listed in the pattern; the smallest size is listed first on both the graphs and in the pattern instructions.** Many of the designs are generously sized, especially the unisex sweaters, so it is important to choose the size that will fit properly.

**It is important to maintain the correct gauge while knitting because the finished measurements and shape of your garment are completely dependent upon gauge.** If you knit looser than the gauge given in the pattern instructions, try needles one size smaller. If you knit tighter, try needles one size larger.

## SLEEVE & SHOULDER SEAMS



PURE NEW WOOL

## ABBREVIATIONS

approx = approximately	mm = millimeter(s)
beg = begin(ning)	p = purl
C O = cast on	p-wise = purlwise, as if to purl
C OFF = cast off	pssO = pass slipped stitch(es) over
CC = contrast color	p2tog = purl 2 stitches together
cn = cable needle	rem = remain(ing)(der)
cir = circular	rep = repeat(s)(ing)
cm = centimeter(s)	rnd(s) = round(s)
cont = continu(e)(ing)	RS = right side(s)
dec = decreas(e/s)(ing)	ssk = slip next two sts, one at a time, then insert tip of left needle into fronts of these 2 sts and knit them together
dp = double pointed	st(s) = stitch(es)
g st = garter stitch	St st = stockinette stitch
gr = gram(s)	tbl = through the back of the loop(s)
inc = increas(e/s)(ing)	tog = together
k = knit	WS = wrong side(s)
k-wise = knitwise, as if to knit	yd(s) = yard(s)
k2tog = knit 2 stitches together	yo = yarn over needle to make 1 stitch
m = meter(s)	
MC = main color	

## DALE BABY ULL

100% Pure Merino Superwash Fingering Weight Wool. *Care Instructions:* Machine wash (delicate cycle) or hand wash in warm water using mild/neutral detergent. Dry flat; do not put in dryer. May be dry cleaned.

## FALK

100% Pure Superwash Sport Weight Wool. *Care instructions:* Machine wash (delicate cycle) or hand wash in cold water using mild/neutral detergent. Dry flat; do not put in dryer. May be dry cleaned.

## FREE STYLE

100% Pure Superwash Worsted Weight Wool. *Care instructions:* Machine wash (delicate cycle) or hand wash in cool water using mild/neutral detergent. Dry flat; do not put in dryer. May be dry cleaned.



Do not  
bleach



Gentle  
cycle spin



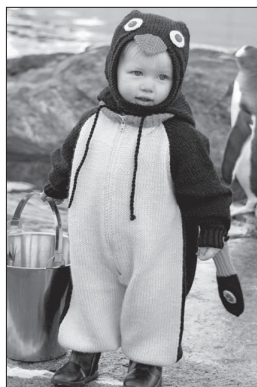
Steam lightly with  
steam iron, if needed



Dry Clean with perchlorethylene  
using normal methods

The patterns in this book have been developed and tested by our design division. Every effort has been made to make the knitting directions in this book as accurate as possible. However, we cannot be responsible for variations due to individual knitters, human error or typographical mistakes.

Copyright 2010, Dale of Norway, Inc. First edition. All rights reserved. No portion of this book may be copied, leased, resold or otherwise distributed without the written permission of Dale of Norway, Inc. For further information write: Dale of Norway, 4750 Shelburne Road, Shelburne, VT 05482.



## FREE STYLE

**SIZES:** 1 2 3 4 years

## PLAYSUIT:

Color 1:	300	350	400	450 gr
black 0090				
Color 2:	150	150	200	200 gr
natural 0020				
Color 3:	50	50	50	50 gr
orange 3309				

## HELMET CAP:

Color 1:	100	100	100	100 gr
black 0090				
Color 2:	50 gr or remnants for all sizes			
natural 0020				
Color 3:	50 gr or remnants for all sizes			
orange 3309				

## MITTENS:

Color 1:	50	50	50	50 gr
black 0090				
Color 2:	50 gr or remnants for all sizes			
natural 0020				
Color 3:	50	50	50	50 gr
orange 3309				

## SOCKS:

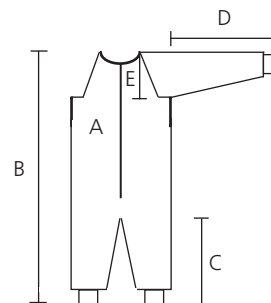
Color 3:	50	50	50	50 gr
orange 3309				

**SUGGESTED NEEDLE SIZES:** Cir and dp needles in sizes 4 mm and 5 mm, crochet hooks in sizes 3 mm and 3.5 mm, st holders and markers. **Note:** US and metric needle sizes often do not match exactly and size equivalencies have changed. The original version of this pattern was written to use metric size needles; if in doubt as to whether a given US needle size is the same as a metric size, use the metric size needle. As always, please take the time to check your gauge carefully and change needle sizes as needed to obtain the correct gauge.

**GAUGE:** 18 sts and 24 rnds over St st using larger needles = 4"/10 cm x 4"/10 cm.

**ACCESSORIES:** Playsuit, off white 16" (16", 18", 18")/40 (40, 45, 45) cm long zipper, 2 blue buttons and 2 black buttons; Helmet Cap, 2 blue buttons; and Mittens, 2 blue buttons.

## FINISHED MEASUREMENTS:



- A** = Chest Width: 26 $\frac{3}{4}$ " (29 $\frac{1}{8}$ ", 31 $\frac{1}{2}$ ", 34 $\frac{5}{8}$ ")/  
68 (74, 80, 88) cm
- B** = Body Length: 25 $\frac{1}{4}$ " (27 $\frac{1}{8}$ ", 29 $\frac{1}{2}$ ", 32 $\frac{1}{4}$ ")/  
64 (69, 75, 82) cm
- C** = Leg Length: 8 $\frac{5}{8}$ " (10 $\frac{1}{4}$ ", 12 $\frac{1}{4}$ ", 14 $\frac{1}{2}$ ")/  
22 (26, 31, 37) cm
- D** = Sleeve Length to Underarm: 8 $\frac{1}{4}$ " (9 $\frac{1}{2}$ ", 10 $\frac{5}{8}$ ", 11 $\frac{3}{4}$ ")/  
21 (24, 27, 30) cm
- E** = Armhole Depth: 5 $\frac{7}{8}$ " (6 $\frac{1}{4}$ ", 7 $\frac{1}{8}$ ", 7 $\frac{7}{8}$ ")/  
15 (16, 18, 20) cm

**Watch gauge carefully to obtain the correct finished measurements!**

**Note:** Back and Back Legs of body are wider than Fronts, so side seams will be slightly forward of the actual sides of body.

## PLAYSUIT

**BACK RIGHT LEG:** With larger cir needle and Color 1, C O 32 (34, 36, 38) sts. Working back and forth, work first and last st of every row in g st, and beg St st over rem sts. AT THE SAME TIME, inc 1 st, 1 st in from edge sts, at the end of every other RS row 4 (4, 0, 0) times, then every third RS row 3 (4, 9, 10) times – 39 (42, 45, 48) sts. Work without further inc until leg measures 6 $\frac{1}{4}$ " (7 $\frac{5}{8}$ ", 9 $\frac{1}{2}$ ", 11 $\frac{5}{8}$ ")/16 (19.5, 24, 29.5) cm from bottom edge, ending with a RS row. Next row, C OFF 1 st, then work to end of row – 38 (41, 44, 47) sts. Set let aside.

**BACK LEFT LEG:** With larger cir needle and Color 1, C O 32 (34, 36, 38) sts. Working back and forth, work first and last st of every row in g st, and beg St st over rem sts. AT THE SAME TIME, inc 1 st, 1 st in from edge sts, at the beg of every other RS row 4 (4, 0, 0) times, then every third RS row 3 (4, 9, 10) times – 39 (42, 45, 48) sts. Work without further inc until leg measures 6 $\frac{1}{4}$ " (7 $\frac{5}{8}$ ", 9 $\frac{1}{2}$ ", 11 $\frac{5}{8}$ ")/16 (19.5, 24, 29.5) cm from bottom edge, ending with a WS row. Next row, C OFF 1 st, then work to end of row – 38 (41, 44, 47) sts.

**BACK:** With RS facing, slip sts for both legs to larger cir needle and place marker where pieces meet – 76 (82, 88, 94) sts. Working back and forth, cont first and last st of every row in g st, and St st over rem sts. Beg with a RS row and knit to 3 sts before marker, ssk, k2, k2tog, then knit to end of row – 74 (80, 86, 92) sts. Work 1 row without dec. Rep last 2 rows 3 more times – 68 (74, 80, 86) sts. Cont without further dec until back measures 17" (18 $\frac{3}{8}$ ", 19 $\frac{3}{4}$ ", 21 $\frac{1}{2}$ ")/43 (46.5, 50, 54.5) cm from bottom edge, ending with a WS row.

**ARMHOLES:** C OFF 6 sts at the beg of next 2 rows – 56 (62, 68, 74) sts. Next row, k1, k2tog, knit to last 3 sts, ssk, k1 – 54 (60, 66, 72) sts. Work 1 row without dec. Rep last 2 rows 17 (19, 21, 23) more times – 20 (22, 24, 26) sts. C OFF rem sts.

**FRONT RIGHT LEG & FRONT:** With larger cir needle and Color 2, C O 28 (30, 32, 34) sts. Working back and forth, work first and last st of every row in g st, and beg St st over rem sts. AT THE SAME TIME, inc 1 st, 1 st in from edge sts, at the beg of every other RS row 4 (4, 0, 0) times, then every third RS row 3

(4, 9, 10) times – 35 (38, 41, 44) sts. Work without further inc until leg measures 6¼" (7⅝", 9½", 11⅝")/16 (19.5, 24, 29.5) cm from bottom edge, ending with a WS row. Place marker at beg of last RS row for crotch.

Next row, k1, k2tog, then knit to end – 34 (37, 40, 43) sts. Work 1 row without dec. Rep last 2 rows 3 more times – 31 (34, 37, 40) sts. Next RS row, C OFF 1 st for bottom of zipper opening, then knit to end – 30 (33, 36, 39) sts. Cont without further shaping until front measures 17" (18⅜", 19¾", 21½")/43 (46.5, 50, 54.5) cm from bottom edge, ending with a RS row.

**ARMHOLE:** Next row, C OFF 2 sts for armhole, then work to end of row – 28 (31, 34, 37) sts. Next row, knit to last 3 sts, ssk, k1 – 27 (30, 33, 36) sts. Work 1 row without dec. Rep last 2 rows 11 (13, 15, 17) more times – 16 (17, 18, 19) sts.

**NECK OPENING:** Cont raglan shaping at end of RS rows and C OFF at the beg of RS rows, 5 (6, 7, 8) sts once, 3 sts, once, then 2 sts once. C OFF rem 3 sts.

**FRONT LEFT LEG & FRONT:** With larger cir needle and Color 2, C O 28 (30, 32, 34) sts. Working back and forth, work first and last st of every row in g st, and beg St st over rem sts. AT THE SAME TIME, inc 1 st, 1 st in from edge sts, at the end of every other RS row 4 (4, 0, 0) times, then every third RS row 3 (4, 9, 10) times – 35 (38, 41, 44) sts. Work without further inc until leg measures 6¼" (7⅝", 9½", 11⅝")/16 (19.5, 24, 29.5) cm from bottom edge, ending with a WS row. Place marker at end of last RS row for crotch.

Next row, knit to last 3 sts, ssk, k1 – 34 (37, 40, 43) sts. Work 1 row without dec. Rep last 2 rows 3 more times – 31 (34, 37, 40) sts. Next WS row, C OFF 1 st for bottom of zipper opening, then work to end – 30 (33, 36, 39) sts. Cont without further shaping until front measures 17" (18⅜", 19¾", 21½")/43 (46.5, 50, 54.5) cm from bottom edge, ending with a WS row.

**ARMHOLE:** Next row, C OFF 2 sts for armhole, then knit to end – 28 (31, 34, 37) sts. Work 1 row without dec. Next row, k1, k2tog, then knit to end of row – 27 (30, 33, 36) sts. Work 1 row without dec. Rep last 2 rows 11 (13, 15, 17) more times – 16 (17, 18, 19) sts.

**NECK OPENING:** Cont raglan shaping at beg of RS rows and C OFF at the beg of WS rows, 5 (6, 7, 8) sts once, 3 sts, once, then 2 sts once. C OFF rem 3 sts.

**RIGHT SLEEVE:** With smaller dp needle and Color 1, C O 26 (28, 30, 32) sts. Join and, working in the rnd, mark beg of rnd. Work 2" (2⅛", 2⅜", 2½")/5 (5.5, 6, 6.5) cm of k1 tbl, p1 rib. Knit 1 rnd and inc 10 sts evenly spaced across rnd – 36 (38, 40, 42) sts.

Change to larger dp needles. Beg St st and, AT THE SAME TIME, inc 1 st at the beg and end of every sixth rnd 3 times, then every fifth rnd 3 (4, 5, 6) times, leaving 2 sts between inc sts – 48 (52, 56, 60) sts. Cont without further shaping until sleeve measures 8¼" (9½", 10⅝", 11¾")/21 (24, 27, 30) cm from bottom edge, ending last rnd 4 sts before end of rnd.

**SLEEVE CAP:** C OFF the next 8 sts for underarm, then knit to end of rnd – 40 (44, 48, 52) sts. Working back and forth, work first and last st of every row in g st and cont St st over rem sts. Beg with a WS row and work 1 row without dec. Next row, k1, k2tog, knit to last 3 sts, ssk, k1 – 38 (42, 46, 50) sts. Rep last 2 rows 14 (16, 18, 20) more times, ending with a WS row – 10 sts. Cont raglan shaping at end of RS rows, C OFF at the beg of every RS row, 2 sts twice, then 1 st once. C OFF rem 2 sts.

**LEFT SLEEVE:** Work left sleeve same as right to underarm, ending last rnd 4 sts before end of rnd.

**SLEEVE CAP:** C OFF the next 8 sts for underarm, then knit to end of rnd – 40 (44, 48, 52) sts. Working back and forth, work first and last st of every row in g st and cont St st over rem sts. Beg with a WS row and work 1 row without dec. Next row, k1, k2tog, knit to last 3 sts, ssk, k1 – 38 (42, 46, 50) sts. Rep last 2 rows 14 (16, 18, 20) more times, ending with a RS row – 10 sts. Cont raglan shaping at beg of RS rows, C OFF at the beg of every WS row, 2 sts twice, then 1 st once. C OFF rem 2 sts.

**FINISHING:** Lay body and sleeves out to finished measurements and steam lightly; do not steam ribs. Sew fronts and back tog along sides and inseams. Sew fronts tog along center from crotch to bottom of zipper opening. Pin sleeves into armholes, placing

C OFF sts of underarms at C OFF sts of bottom of armholes. Neatly sew sleeves to body.

**FRONT EDGING:** With smaller cir needle, Color 2 and with RS facing, pick up 9 sts per 2"/5 cm along left edge of zipper opening from neck edge to bottom of opening, using a crochet hook ½-metric size smaller than needles to pick up sts k-wise. Working back and forth, beg with a WS row, and C OFF neatly k-wise. Work edging along right front edge of opening to match.

**NECKBAND:** With smaller cir needle, Color 3 and with RS facing, pick up 9 sts per 2"/5 cm along neck edge in same manner as front edgings (total number of sts picked up should be divisible by 2 + 1). Working back and forth, beg with a WS row and set rib in this manner: K1, \*p1 tbl, k1; rep from \* to end of row. Next row, k1, \*k1 tbl, p1, rep from \* to last 2 sts, k1 tbl, k1. Rep these 2 rows until neckband measures 2" (2⅜", 2⅜", 2⅜")/5 (6, 6, 6) cm. C OFF loosely in rib.

**ZIPPER:** Pin zipper into front opening, placing top of zipper approx 1" (1⅛", 1⅛", 1⅛")/2.5 (3, 3, 3) cm above neck edge, and bottom of zipper at or below bottom of opening, and having edgings next to zipper teeth; make sure zipper will not catch edgings when opened and closed. Neatly sew zipper into opening. Fold neckband to inside along middle of rib, making sure zipper will not catch ends of neckband. Loosely sew neckband to WS, and neatly sew ends of neckband closed.

**CUFFS:** With smaller dp needles, Color 3 and with RS facing, beg at inseam and pick up 32 (34, 36, 38) sts along bottom of one leg in same manner as front edgings. Join and, working in the rnd, mark beg of rnd. Work 2⅜" (2½", 2¾", 3")/6 (6.5, 7, 7.5) cm of k1 tbl, p1 rib. C OFF loosely in rib. Make cuff on bottom of rem leg to match.

**HOOD:** With larger cir needle and Color 1, C O 56 (59, 62, 65) sts. Place markers 22 (23, 24, 25) sts from beg and end of row. Working back and forth, beg St st and knit 1 row. C OFF 2 sts at the beg of next 2 rows, then dec 1 st at the beg and end of every other row twice. AT THE SAME TIME, inc 1 st before first marker and after second marker every RS row 3 (4, 5, 6) times – 54 (59, 64, 69) sts. Work without further shaping until hood measures 7⅛" (7½", 7⅞", 8¼")/18 (19, 20, 21) cm from bottom edge along center back.

**TOP SHAPING:** C OFF 17 (19, 21, 23) sts at the beg of next 2 rows – 20 (21, 22, 23) sts. Cont St st over rem sts and, AT THE SAME TIME, dec 1 st, 1 st in from edges, at the beg and end of every sixth (sixth, eighth, eighth) row 3 times and dec 1 st at center of last dec row for sizes 1 (3) yrs only – 13 (15, 15, 17) sts. Work without further dec until top of hood measures approx 3¾" (4⅛", 4½", 5⅛")/9.5 (10.5, 11.5, 13) cm. Slip sts to holder. Neatly sew top of hood to sides along C OFF edges.

**FRONT EDGING:** With smaller cir needle, Color 1 and with RS facing, pick up 9 sts per 2"/5 cm along front edge of hood, and k sts from holder. Working back and forth, beg with a WS row and purl 1 row. Next row, k4, yo, k2tog, knit to last 6 sts, end k2tog, yo, k4. Work 2 rows of St st. K 1 row on WS for fold line. Work 4 rows of St st. C OFF loosely. Fold edging to inside along fold line and sew loosely to WS.

**BEAK:** With smaller dp needle, 2 strands of Color 3 held tog, and with RS facing, pick up 13 (15, 15, 17) sts along fold line at top of hood in same manner as front edgings. Working back and forth, beg with a WS row and knit 1 row. Next row, k5 (6, 6, 7) sts, slip 1 st, k2tog, psso, knit to end – 11 (13, 13, 15) sts. Knit 1 row without dec. Next row, k4 (5, 5, 6) sts, slip 1 st, k2tog, psso, knit to end – 9 (11, 11, 13) sts. Knit 1 row without dec. Cont dec every RS row 3 (4, 4, 5) more times, with 1 less st before and after dec each time, ending with a RS row. Next row, k3tog, then fasten off rem st.

**EYES:** With smaller crochet hook and Color 2, ch 4, then join with a slip st in first ch to form ring.

**Rnd 1:** Ch 1, work 11 sc around ring, then join with a slip st in ch at beg of rnd – 12 sts.

**Rnd 2:** Ch 1, work 2 sc, \* 2 sc in next st, 1 sc in each of next 2 sts; rep from \* to end of rnd – 16 sts. Rep rnd 2 until eye measures approx 1⅝"/4 cm in diameter. Fasten off. Make second eye to match.

Pin eyes to top of hood as shown in photo, then sew securely to hood. Securely sew a button at center of each eye. Pin hood to inside of neckband at neck edge, with ends of hood at ends of neckband. Neatly sew hood to body. Make a twisted cord with Color 1, approx 24" (26¾", 29½", 32¼")/61 (68, 75, 82) cm, or desired length. Thread cord through front edging of hood, beg and end at eyelets at bottom of front edging.

### HELMET CAP

With larger dp needles and Color 1, C O 56 (60, 64, 68) sts. Join and, working in the rnd, mark beg of rnd and work 2" (2⅛", 2⅜", 2½")/5 (5.5, 6, 6.5) cm of k1 tbl, p1 rib. Knit 1 rnd and inc 14 (16, 18, 20) sts evenly spaced across rnd – 70 (76, 82, 88) sts. Slip last 8 (9, 10, 11) sts to st holder for front opening – 62 (67, 72, 77) sts. Working back and forth, cont St st and C OFF 2 sts at the beg of first 2 rows, then dec 1 st at the beg and end of every other row twice – 54 (59, 64, 69) sts. Cont without further shaping until cap measures 5½" (5⅞", 6¼", 6¾")/14 (15, 16, 17) cm from top of rib along center back.

**TOP SHAPING:** C OFF 17 (19, 21, 23) sts at the beg of next 2 rows – 20 (21, 22, 23) sts. Cont St st over rem sts and, AT THE SAME TIME, dec 1 st, 1 st in from edges, at the beg and end of every sixth (sixth, eighth, eighth) row 3 times and dec 1 st at center of last dec row for sizes 1 (3) yrs only – 13 (15, 15, 17) sts. Work without further dec until top of hood measures approx 3¾" (4⅛", 4½", 5⅛")/9.5 (10.5, 11.5, 13) cm. Slip sts to holder. Neatly sew top of cap to sides along C OFF edges.

**FRONT EDGING:** With smaller cir needle, Color 1 and with RS facing, knit sts from bottom holder, pick up 9 sts per 2"/5 cm along front edge of hood, and k sts from top holder, then pick up sts along rem front edge. Join and, working in the rnd, mark beg of rnd. Knit 4 rnds, purl 1 rnd for fold line. Knit 4 rnds. C OFF loosely. Fold edging to inside along fold line and sew loosely to WS.

**BEAK & EYES:** Make beak and eyes same as for Romper hood.

### MITTENS

**LEFT MITTEN:** With smaller dp needles and Color 3, C O 24 (26, 28, 30) sts. Join and, working in the rnd, mark beg of rnd. Work 2" (2⅜", 2⅜", 2¾")/5 (6, 6, 7) cm of k1 tbl, p1 rib. Change to larger dp needles and Color 1. Beg St st and work until hand measures ⅝" (⅞", 1", 1⅛")/1.5 (2, 2.5, 3) cm above rib.

**THUMB OPENING:** Next rnd, knit to last 3 (4, 4, 5) sts, k 3 (4, 4, 5) sts with a piece of contrast yarn for thumb opening, slip these sts back to left needle, then k with Color 1. Cont working until hand measures approx 1⅝" (2", 2⅜", 2¾")/4 (5, 6, 7) cm, or ⅝" (⅝", ⅞", ⅞")/1.5 (1.5, 2, 2) cm short of desired length from top of rib.

**TOP SHAPING:** Place side markers at the beg of rnd and after 12 (13, 14, 15) sts. Next rnd, \*k1, ssk, knit to 3 sts before next marker, k2tog, k1; rep from \* once more – 20 (22, 24, 26) sts. Cont dec every rnd 4 (4, 5, 5) more times, with 2 fewer sts between dec sts each time. Gather rem 4 (6, 4, 6) sts on a piece of yarn and fasten securely.

**THUMB:** Remove contrast yarn from thumb opening and slip resulting 6 (8, 8, 10) loops to larger dp needles and pick up 1 st on each side of opening – 8 (10, 10, 12) sts. Join and, working in the rnd, mark beg of rnd. Beg St st with Color 3 and work until thumb measures approx ⅞" (1", 1⅛", 1⅜")/2 (2.5, 3, 3.5) cm, or desired length. K2tog across next rnd, then gather rem 4 (5, 5, 6) sts on a piece of yarn and fasten securely.

**RIGHT MITTEN:** Work right mitten same as left mitten, placing thumb opening after 12 (13, 14, 15) sts.

**EYES:** With smaller crochet hook and Color 2, ch 4, then join with a slip st in first ch to form ring.

**Rnd 1:** Ch 1, work 11 sc around ring, then join with a slip st in ch at beg of rnd – 12 sts.

**Rnd 2:** Ch 1, work 2 sc, \* 2 sc in next st, 1 sc in each of next 2 sts; rep from \* to end of rnd – 16 sts. Eye should measure approx 1⅛"/3 cm in diameter. Fasten off. Make second eye to match.

Pin eyes to back of hands as shown in photo, then sew securely to mittens. Securely sew a button at center of each eye.

### SOCKS

With smaller dp needles and Color 3, C O 30 (32, 34, 36) sts. Join and, working in the rnd, mark beg of rnd and beg rnds at center back. Work 2¾" (3⅛", 3⅛", 3½")/7 (8, 8, 9) cm of k1 tbl, p1 rib. Change to larger dp needles and knit 1 rnd.

**HEEL:** Working back and forth over first and last 8 (8, 9, 9) sts of rnd for heel, slip rem 14 (16, 16, 18) sts to holders. Cont St st and beg with a RS row, k to 1 st before end of row, then turn. Slip first st and tighten it slightly, p to 1 st before end of row, then turn. Slip first st and tighten it slightly, k to 1 st before where row was turned before, then turn. Slip first st and tighten it slightly, p to 1 st before where row was turned before, then turn. Cont working in this manner, working 1 less st at end of every row until 4 sts rem in work at center of heel, then turn. Slip first st and tighten it slightly, work to where row was turned before, pick up horizontal strand between sts and place it twisted on left needle, work it and next st tog, then turn. Rep this row until all heel sts are back in work.

**INSTEP:** Slip sts from holders back to dp needles – 30 (32, 34, 36) sts. Join and, working in the rnd again, beg rnds at center under foot. Knit 1 rnd and dec 4 sts evenly spaced across rnd – 26 (28, 30, 32) sts. Cont St st without further dec until foot measures approx 3½" (4", 4⅜", 4¾")/9 (10, 11, 12) cm, or ⅜" (⅝", ⅝", ⅞")/1 (1.5, 1.5, 2) cm short of desired length from heel. Knit 1 rnd and dec 2 (0, 2, 0) sts evenly spaced across rnd – 24 (28, 28, 32) sts.

**TOE:** Next rnd, \* k4 (5, 5, 6) sts, k2tog; rep from \* to end of rnd – 20 (24, 24, 28) sts. Next rnd, \*k3 (4, 4, 5) sts, k2tog; rep from \* to end of rnd – 16 (20, 20, 24) sts. Cont dec every rnd 2 (3, 3, 4) more times, with 1 less st between dec sts each time. Gather rem 8 sts on a piece of yarn and fasten securely. Make second sock to match.



## FALK

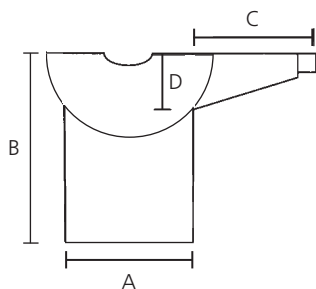
## SIZES: 2 4 6 years

Color 1:	100	150	150 gr
pansy blue 5545			
Color 2:	100	100	150 gr
pastel green 7502			
Color 3:	50	50	50 gr
dandelion 2417			
Color 4:	100	100	150 gr
aquamarine 6604			
Color 5:	100	100	150 gr
cerulean 6215			
Color 6:	100	100	150 gr
blue bell 5624			

**SUGGESTED NEEDLE SIZES:** Cir and dp needles in sizes 3 mm and 3.5 mm, stitch holders and markers. **Note:** US and metric needle sizes often do not match exactly and size equivalencies have changed. The original version of this pattern was written to use metric size needles; if in doubt as to whether a given US needle size is the same as a metric size, use the metric size needle. As always, please take the time to check your gauge carefully and change needle sizes as needed to obtain the correct gauge.

**GAUGE:** 22 sts and 29 rnds over St st, and 27 rnds over colorwork using larger needles = 4"/10 cm x 4"/10 cm.

## FINISHED MEASUREMENTS:



**A** = Chest Width: 36" (39<sup>3</sup>/<sub>8</sub>", 43<sup>1</sup>/<sub>2</sub>")/  
91.5 (101, 110.5) cm

**B** = Body Length: 18<sup>1</sup>/<sub>2</sub>" (20<sup>1</sup>/<sub>2</sub>", 22<sup>1</sup>/<sub>2</sub>")/  
47 (52, 57) cm

**C** = Sleeve Length to Underarm: 9" (10<sup>1</sup>/<sub>4</sub>", 11")/  
23 (26, 28) cm

**D** = Armhole Depth: 4<sup>3</sup>/<sub>8</sub>" (4<sup>3</sup>/<sub>4</sub>", 5<sup>1</sup>/<sub>8</sub>")/  
11 (12, 13) cm

**Watch gauge carefully to obtain the correct finished measurements!**

## SPECIAL ABBREVIATIONS:

M1 = make 1 = insert left needle under strand between sts, from front to back, and knit through the back of the loop

**Note:** Dress is worked from the neck down.

**NECKBAND:** With smaller dp or cir needle and Color 1, C O 72 (80, 88) sts. Join and, working in the rnd, mark beg of rnd. Work 2"/5 cm of k1 tbl, p1 rib. Work rnd 1 of Pattern A, and m1 after every other st as shown – 108 (120, 132) sts.

**YOKE:** Change to larger dp or cir needle and complete Pattern A. Knit 2 (2, 3) rnds with Color 2. Next rnd, \*k4, m1; rep from \* to end of rnd – 135 (150, 165) sts. Knit 2 (3, 3) rnds.

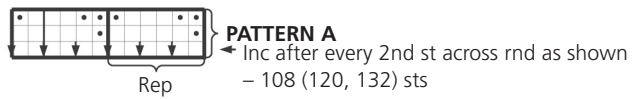
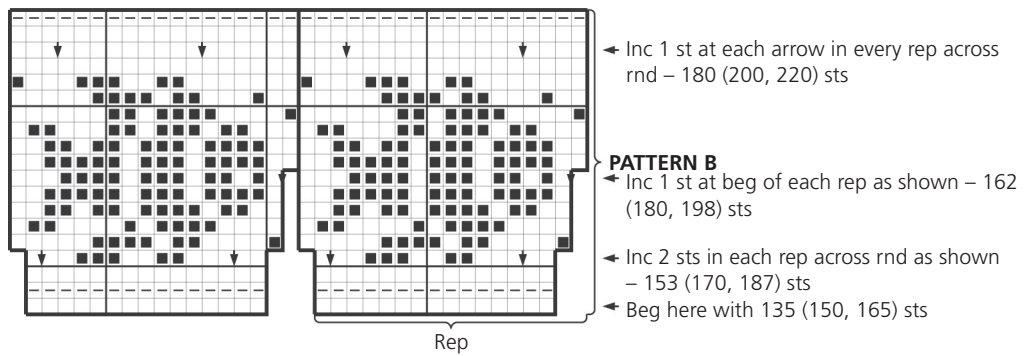
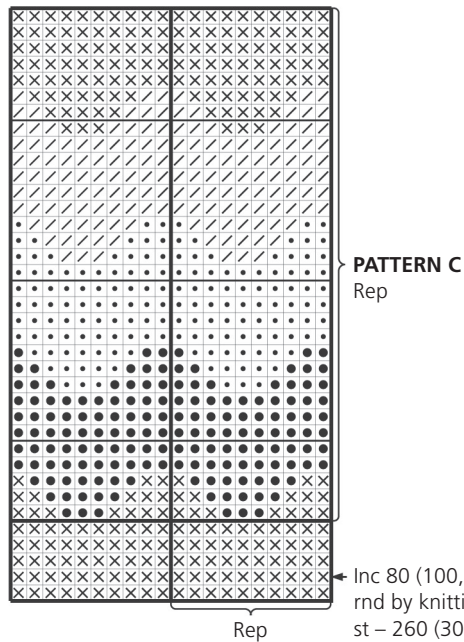
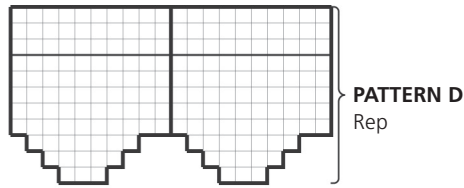
Work Pattern B and inc as shown on graph – 180 (200, 220) sts. Beg Pattern C and inc 80 (100, 120) sts evenly spaced across second rnd – 260 (300, 340) sts. Cont 32-rnd rep without further inc and work until yoke measures 3<sup>3</sup>/<sub>8</sub>" (3<sup>3</sup>/<sub>4</sub>", 4<sup>1</sup>/<sub>8</sub>")/8.5 (9.5, 10.5) cm from top of rib.

**BODY:** Next rnd, work 90 (100, 110) sts for back, slip next 40 (50, 60) sts to holders for sleeve, C O 10 sts for underarm, work next 90 (100, 110) sts for front, sl rem 40 (50, 60) sts to holder for sleeve, then C O 10 sts for underarm – 200 (220, 240) sts. Cont pattern as set and work until body measures 16" (17<sup>1</sup>/<sub>8</sub>", 19<sup>7</sup>/<sub>8</sub>")/40.5 (45.5, 50.5) cm from top of rib, ending with a rnd 8, 16, 24 or 32 of rep. Work Pattern D and cont last "wave" color into first 3 rnds of pattern as shown on graph and in photo. Work a Picot rnd for fold line (\*yo, k2tog; rep from \* to end of rnd). Knit 2 rnds, then C OFF loosely.

**SLEEVES:** Slip sts for one sleeve to larger dp needles and C O 10 new sts at bottom of underarm – 50 (60, 70) sts. Cont pattern as set without dec until sleeve measures approx 6<sup>3</sup>/<sub>4</sub>" (7<sup>5</sup>/<sub>8</sub>", 8<sup>1</sup>/<sub>4</sub>")/17 (19.5, 21) cm, ending with a rnd 7, 15, 23 or 31 of rep. Knit 1 rnd and dec 12 (18, 24) sts evenly spaced across rnd – 38 (42, 46) sts. Change to smaller dp needles and Color 1. Work 2<sup>3</sup>/<sub>8</sub>" (2<sup>1</sup>/<sub>2</sub>", 2<sup>3</sup>/<sub>4</sub>")/6 (6.5, 7) cm of k1 tbl, p1 rib. C OFF loosely in rib. Make second sleeve to match.

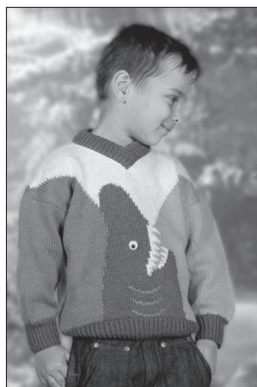
**FINISHING:** Lay dress out to finished measurements and steam lightly; do not steam ribs. Neatly sew body and sleeves tog at underarms. Fold lower edge of dress to inside along fold line and sew neatly to WS. Fold neckband to outside along middle of rib.





**Note:** Inc for Patterns A & B are worked by lifting the horizontal strand between sts and k tbl to make 1 (m1)

- = Color 1 = k = pansy blue 5545
- ◻ = Color 1 = p
- ◻ = Color 2 = k = pastel green 7502
- = Color 3 = k = dandelion 2417
- ⊗ = Color 4 = k = aquamarine 6604
- = Color 5 = k = cerulean 6215
- ◻ = Color 6 = k = blue bell 5624



## FALK

## SIZES: 2 4 6 8 years

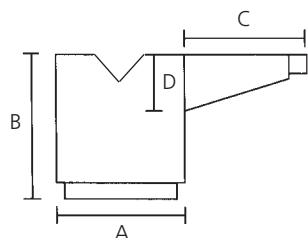
Color 1:	100	100	100	100 gr
pansy blue 5545				
Color 2:	100	100	100	150 gr
ocean blue 6027				
Color 3:	100	100	100	150 gr
cerulean 6215				
Color 4:	50	50	50	100 gr
pastel green 7502				
Color 5:	50	50	50	50 gr
steel grey 5762				
Color 6:	50 gr or remnants	for all sizes		
off white 0017				

**SUGGESTED NEEDLE SIZES:** Cir and dp needles in sizes 3 mm and 3.5 mm, and blunt tapestry needle. **Note:** US and metric needle sizes often do not match exactly and size equivalencies have changed. The original version of this pattern was written to use metric size needles; if in doubt as to whether a given US needle size is the same as a metric size, use the metric size needle. As always, please take the time to check your gauge carefully and change needle sizes as needed to obtain the correct gauge.

**GAUGE:** 22 sts and 29 rows over St st using larger needles = 4"/10 cm x 4"/10 cm.

**ACCESSORIES:** One large eye button, or 1 black button and 1 larger white button.

## FINISHED MEASUREMENTS:



**A** = Chest Width: 27<sup>1</sup>/<sub>8</sub>" (29<sup>1</sup>/<sub>8</sub>", 31<sup>1</sup>/<sub>2</sub>", 33<sup>1</sup>/<sub>2</sub>")/  
69 (74, 80, 85) cm

**B** = Body Length: 15<sup>3</sup>/<sub>8</sub>" (17", 18<sup>1</sup>/<sub>2</sub>", 20<sup>1</sup>/<sub>8</sub>")/  
39 (43, 47, 51) cm

**C** = Sleeve Length: 9<sup>7</sup>/<sub>8</sub>" (11", 12<sup>1</sup>/<sub>4</sub>", 13<sup>3</sup>/<sub>4</sub>")/  
25 (28, 31, 35) cm

**D** = Armhole Depth: 5<sup>5</sup>/<sub>8</sub>" (5<sup>7</sup>/<sub>8</sub>", 6<sup>1</sup>/<sub>4</sub>", 6<sup>3</sup>/<sub>4</sub>")/  
14.5 (15, 16, 17) cm

*Watch gauge carefully to obtain the correct finished measurements!*

TWIST ST RIB  
(multiple of 2 sts)

## Worked back and forth:

**Row 1 (RS):** K1, \* p1, k1 tbl; rep from \* to last st, end k1.

**Row 2 (WS):** K1, \* p1 tbl, k1; rep from \* to end of row.

Rep these 2 rows for pattern.

## Worked in the rnd:

**Rnd 1:** \* K1 tbl, p1; rep from \* to end of rnd.

Rep this rnd for pattern.

**FRONT:** With smaller cir needle and Color 1, C O 78 (84, 90, 96) sts. Working back and forth, work 1<sup>5</sup>/<sub>8</sub>" (2", 2<sup>3</sup>/<sub>8</sub>", 2<sup>3</sup>/<sub>8</sub>")/4 (5, 6, 6) cm of Twist St Rib, ending with a WS row. Change to larger cir needle. Beg St st and work Front Pattern, making sure to twist yarns when changing colors to avoid leaving holes. AT THE SAME TIME, when front measures 11" (12<sup>1</sup>/<sub>4</sub>", 13<sup>3</sup>/<sub>8</sub>", 14<sup>1</sup>/<sub>2</sub>")/28 (31, 34, 37) cm from bottom of rib, divide front at center to beg shaping front neck opening – 39 (42, 45, 48) sts on each side of front.

**FRONT NECK OPENING:** Working each side of front separately, cont pattern and dec 1 st, 1 st in from neck edge, every RS row 13 (14, 15, 16) times – 26 (28, 30, 32) sts. In the meantime, when graph is complete, cont to widen Color 4 by 1 st on each side of front every other row. Work without further shaping until front measures 15<sup>3</sup>/<sub>8</sub>" (17", 18<sup>1</sup>/<sub>2</sub>", 20<sup>1</sup>/<sub>8</sub>")/39 (43, 47, 51) cm from bottom of rib, then C OFF. Complete other side of front to match, placing neck shaping on opposite side.

**BACK:** With smaller cir needle and Color 1, C O 78 (84, 90, 96) sts. Working back and forth, work 1<sup>5</sup>/<sub>8</sub>" (2", 2<sup>3</sup>/<sub>8</sub>", 2<sup>3</sup>/<sub>8</sub>")/4 (5, 6, 6) cm of Twist St Rib, ending with a WS row. Change to larger cir needle. Beg St st and work Back Pattern, making sure to twist yarns when changing colors to avoid leaving holes. AT THE SAME TIME, when back measures 14<sup>1</sup>/<sub>2</sub>" (16<sup>1</sup>/<sub>8</sub>", 17<sup>3</sup>/<sub>4</sub>", 19<sup>1</sup>/<sub>4</sub>")/37 (41, 45, 49) cm from bottom of rib, shape back neck opening.

**BACK NECK OPENING:** Next row, work 30 (32, 34, 36) sts, C OFF the next 18 (20, 22, 24) sts for neck opening, then work to end of row. Working each side of back separately, cont pattern and C OFF every other row at neck edge, 2 sts twice – 26 (28, 30, 32) sts. Cont without further dec until back measures 15<sup>3</sup>/<sub>8</sub>" (17", 18<sup>1</sup>/<sub>2</sub>", 20<sup>1</sup>/<sub>8</sub>")/39 (43, 47, 51) cm from bottom of rib, then C OFF. Complete other side of back to match, placing neck shaping on opposite side.

**RIGHT SLEEVE:** With smaller dp needles and Color 1, C O 42 (44, 46, 48) sts. Join and, working in the rnd, mark beg of rnd. Work 1<sup>5</sup>/<sub>8</sub>" (2", 2<sup>3</sup>/<sub>8</sub>", 2<sup>3</sup>/<sub>8</sub>")/4 (5, 6, 6) cm of Twisted St Rib. Knit 1 rnd and inc 8 sts evenly spaced across rnd – 50 (52, 54, 56) sts. Change to larger dp needles and Color 2. Cont St st and, AT THE SAME TIME, inc 1 st at the beg and end of every ninth rnd 3 (4, 4, 5) times, then every eighth rnd 3 (3, 4, 4) times, leaving 2 sts between inc sts – 62 (66, 70, 74) sts. Work without further inc until sleeve measures 9<sup>7</sup>/<sub>8</sub>" (11", 12<sup>1</sup>/<sub>4</sub>", 13<sup>3</sup>/<sub>4</sub>")/25 (28, 31, 35) cm from bottom of rib. C OFF.

**LEFT SLEEVE:** Make left sleeve same as right, changing to Color 3 above rib.

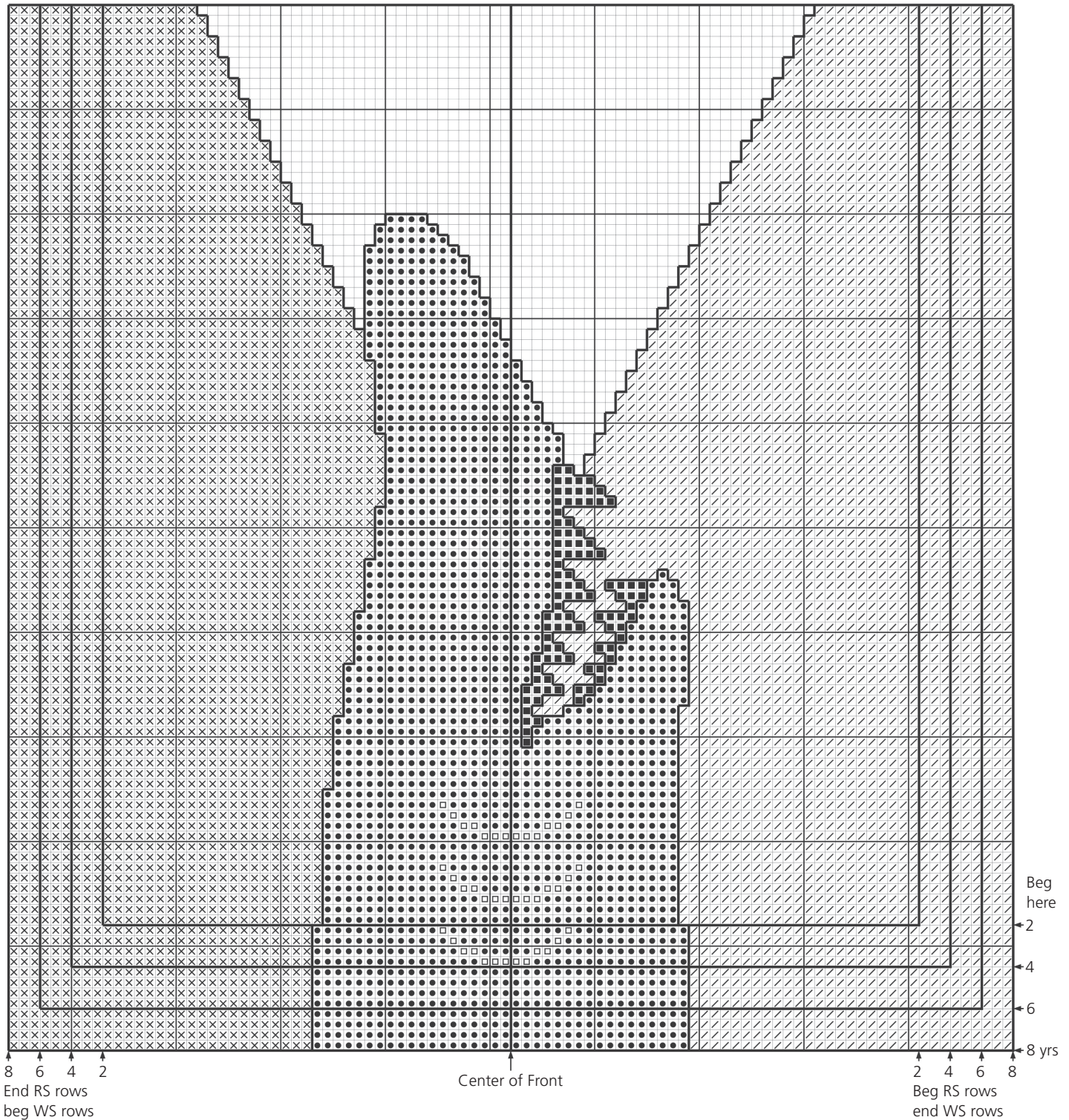
**FINISHING:** Work Colors 3 and 5 in Duplicate St Embroidery on front as shown on graph. Lay pieces out to finished measurements and steam lightly; do not steam ribs. Sew front and back tog at shoulders.

**NECKBAND:** With smaller cir needle, Color 4 and with RS facing, beg at bottom of v-neck and pick up 11 sts per 2"/5 cm along neck edge using a crochet hook 1/2-metric size smaller than needles to pick up an even number of sts k-wise. Working back and forth, change to Color 1 and beg with a RS row. Knit 1 row. Work 2<sup>3</sup>/<sub>8</sub>" (2<sup>3</sup>/<sub>8</sub>", 2<sup>3</sup>/<sub>4</sub>", 2<sup>3</sup>/<sub>4</sub>")/6 (6, 7, 7) cm of Twisted St Rib. C OFF loosely in rib.

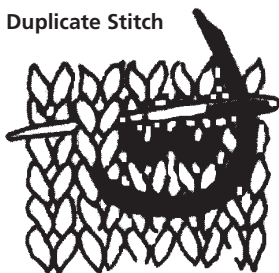
Fold neckband to inside along middle of rib and sew loosely to WS. Neatly sew ends of neckband to neck edge, lapping right edge over left edge on RS. Sew front and back tog along sides of body, leaving approx 5<sup>5</sup>/<sub>8</sub>" (5<sup>7</sup>/<sub>8</sub>", 6<sup>1</sup>/<sub>4</sub>", 6<sup>3</sup>/<sub>4</sub>")/14.5 (15, 16, 17)

cm open below shoulders for armholes. Pin sleeves into armholes, placing centers of sleeves at shoulder seams. Neatly sew sleeves to body. Securely sew eye button to front of body as shown in photo (if using 2 buttons, sew buttons to front at same time).

FRONT

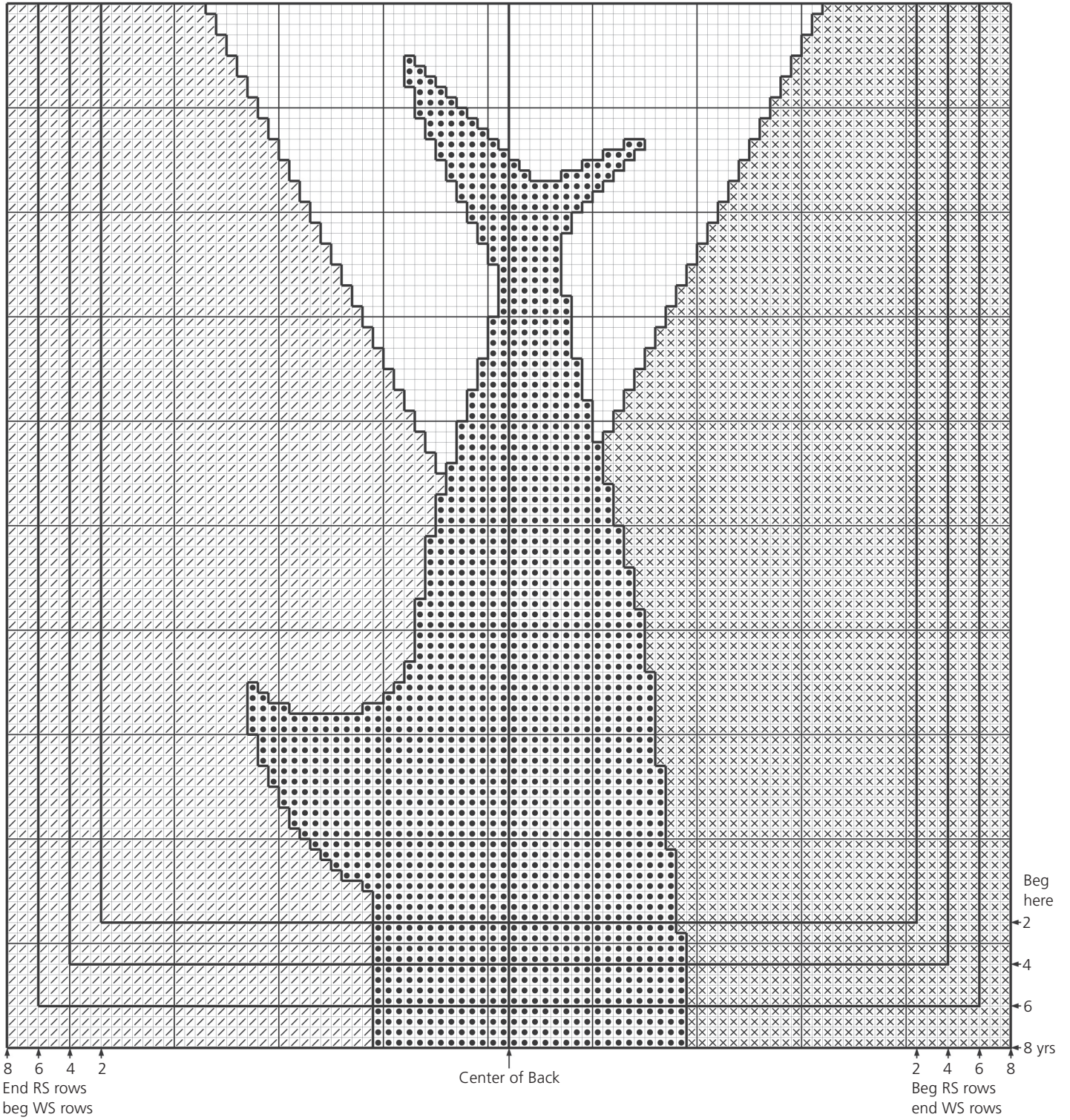


Duplicate Stitch



- ⊗ = Color 2 = ocean blue 6027
- ⊘ = Color 3 = cerulean 6215
- = Color 4 = pastel green 7502
- = Color 5 = steel grey 5762
- = Knit with Color 3, then work in Duplicate St Embroidery with Color 6 when body is complete
- ◻ = Knit with Color 5, then work in Duplicate St Embroidery with Color 2 when body is complete

BACK



- ⊗ = Color 2 = ocean blue 6027
- ▨ = Color 3 = cerulean 6215
- = Color 4 = pastel green 7502
- = Color 5 = steel grey 5762



## FALK &amp; FREE STYLE

**SIZES:** 1/2 3/4 5/6 years

**PULLOVER (Falk):**

Color 1:	50	100	100 gr
pansy blue 5545			
Color 2:	50	100	100 gr
ocean blue 6027			
Color 3:	50	100	100 gr
cerulean 6215			
Color 4:	50	100	100 gr
aquamarine 6604			
Color 5:	100	100	150 gr
pastel green 7502			
Color 6:	100	100	100 gr
dandelion 2417			
Color 7:	50 gr or remnants for each size		
off white 0017			
Color 8:	50 gr or remnants for each size		
black 0090			

**CAP & MITTENS (Free Style):**

Color 1:	50	50	50 gr
Color 2:	50	50	50 gr
Color 3:	50 gr or remnants for each size		
Color 4:	50 gr or remnants for each size		

**COLORWAYS:**

Option	Color Number
I	C1 - cornflower 5626 C2 - horizon 6015 C3 - white 0010 C4 - black 0090
II	C1 - horizon 6015 C2 - yellow 2106 C3 - white 0010 C4 - black 0090

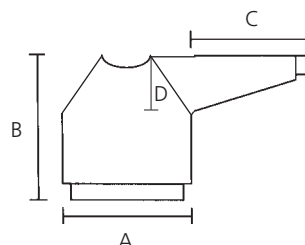
**SUGGESTED NEEDLE SIZES:** *Falk*, cir and dp needles in sizes 3 mm and 3.5 mm, crochet hook in size 2.5 mm, st markers and blunt tapestry needle; and *Free Style*, cir and dp needles in sizes 4 mm and 5 mm, st markers and blunt tapestry needle.

**Note:** US and metric needle sizes often do not match exactly and size equivalencies have changed. The original version of this pattern was written to use metric size needles; if in doubt as to whether a given US needle size is the same as a metric size, use the metric size needle. As always, please take the time to check your gauge carefully and change needle sizes as needed to obtain the correct gauge.

**GAUGE:** *Falk*, 22 sts and approx 29 rnds over St st, and 27 rnds over colorwork pattern using larger needles = 4"/10 cm x 4"/10 cm;

*Free Style*, 18 sts and 24 rnds over St st using larger needles = 4"/10 cm x 4"/10 cm.

**ACCESSORIES:** Pullover, 1 large eye button and 1 smaller blue button; and Mittens, 2 medium eye buttons and 2 smaller blue buttons.

**FINISHED MEASUREMENTS:****Pullover:**

**A** = Chest Width: 25<sup>5</sup>/<sub>8</sub>" (28<sup>3</sup>/<sub>8</sub>", 31<sup>1</sup>/<sub>2</sub>")/65 (72, 80) cm

**B** = Body Length: 15<sup>3</sup>/<sub>4</sub>" (17<sup>3</sup>/<sub>8</sub>", 18<sup>7</sup>/<sub>8</sub>")/40 (44, 48) cm

**C** = Sleeve Length: 9<sup>7</sup>/<sub>8</sub>" (11", 12<sup>1</sup>/<sub>4</sub>")/25 (28, 31) cm

**D** = Armhole Depth: 5<sup>1</sup>/<sub>8</sub>" (5<sup>1</sup>/<sub>2</sub>", 5<sup>7</sup>/<sub>8</sub>")/13 (14, 15) cm

**Watch gauge carefully to obtain the correct finished measurements!**

**PULLOVER**

**BODY:** With smaller cir needle and Color 1, C O 144 (160, 176) sts. Join and, working in the rnd, mark beg of rnd. Work 1" (1<sup>1</sup>/<sub>8</sub>", 1<sup>1</sup>/<sub>8</sub>")/2.5 (3, 3) cm of k1 tbl, p1 rib. Change to larger cir needle and Color 5, and place side markers at the beg of rnd and after 72 (80, 88) sts. Beg St st and Main Pattern, beg each size as shown on graph, then cont 16-st rep to end of rnd. When pattern is complete, cont St st with Color 5 until body measures 10<sup>1</sup>/<sub>4</sub>" (11", 11<sup>3</sup>/<sub>4</sub>")/26 (28, 30) cm from bottom of rib, ending last rnd 5 sts before end of rnd.

**ARMHOLES:** C OFF next 10 sts for armhole, k next 62 (70, 78) sts, C OFF the next 10 sts for armhole, then knit to end of rnd. Set body aside and make sleeves.

**SLEEVES:** With smaller dp needles and Color 1, C O 38 (40, 42) sts. Join and, working in the rnd, mark beg of rnd. Work 2" (2<sup>3</sup>/<sub>8</sub>", 2<sup>3</sup>/<sub>8</sub>")/5 (6, 6) cm of k1 tbl, p1 rib. Knit 1 rnd and inc 18 (20, 22) sts evenly spaced across rnd – 56 (60, 64) sts. Change to larger dp needles. Work Sleeve Stripe Pattern (see page 12), beg each size as shown on graph. When pattern is complete, cont St st with Color 5 until sleeve measures 9<sup>7</sup>/<sub>8</sub>" (11", 12<sup>1</sup>/<sub>4</sub>")/25 (28, 31) cm from bottom of rib, ending last rnd 5 sts before end of rnd. C OFF the next 10 sts for underarm, then knit to end of rnd – 46 (50, 54) sts. Set sleeve aside and make second sleeve to match.

**YOKE:** With RS facing, slip sts for all pieces to larger cir needle in this order: Front, sleeve, back, then sleeve and place st markers where pieces meet – 216 (240, 264) sts. Join and, working in the rnd, mark beg of rnd and beg rnds at back of left sleeve. Knit 1 rnd with Color 5. Next rnd, \* k1 st, k2tog, knit to 3 sts before next marker, ssk, k1 st; rep from \* across rnd – 208 (232, 256) sts. Rep last 2 rnds 14 (16, 18) more times, ending with a dec rnd – 96 (104, 112) sts.

**FRONT NECK OPENING:** Next rnd, knit left sleeve sts and first 12 (13, 14) sts of front, C OFF the next 8 (10, 12) sts for neck opening, then work to end of rnd – 88 (94, 100) sts. Cut yarn and slip sts for left sleeve and left front shoulder from left needle to right needle. Reattach yarn and, working back and forth, beg with a RS row. Cont St st and C OFF 2 sts at the beg of next 4

rows, then dec 1 st at the beg and end of every RS row 3 (4, 4) times. AT THE SAME TIME, cont shaping raglan every RS row – 36 (34, 38) sts; when 2 or 3 sts rem in work on each side of the front, cont raglan shaping on back and sleeves only.

**NECKBAND:** Change to smaller cir or dp needles. With Color 5 and RS facing, pick up 11 sts per 2"/5 cm along neck edge using a crochet hook 1/2-metric size smaller than needles to pick up an even number of sts k-wise. Join and, working in the rnd, mark beg of rnd. Change to Color 1 and knit 1 rnd. Work 2" (2", 2 3/8")/5 (5, 6) cm of k1 tbl, p1 rib. C OFF loosely in rib.

**FINISHING:** Lay body and sleeves out to finished measurements and steam lightly; do not steam ribs. Neatly sew body and sleeves tog at underarms. Fold neckband to inside along middle of rib and sew loosely to WS. Work Duplicate St Embroidery in large fish on front, using colors as shown on graph. Work Chain St Embroidery around fish with Color 8 as shown in photo. Securely sew eye button to front of body over top of blue button as shown in photo.

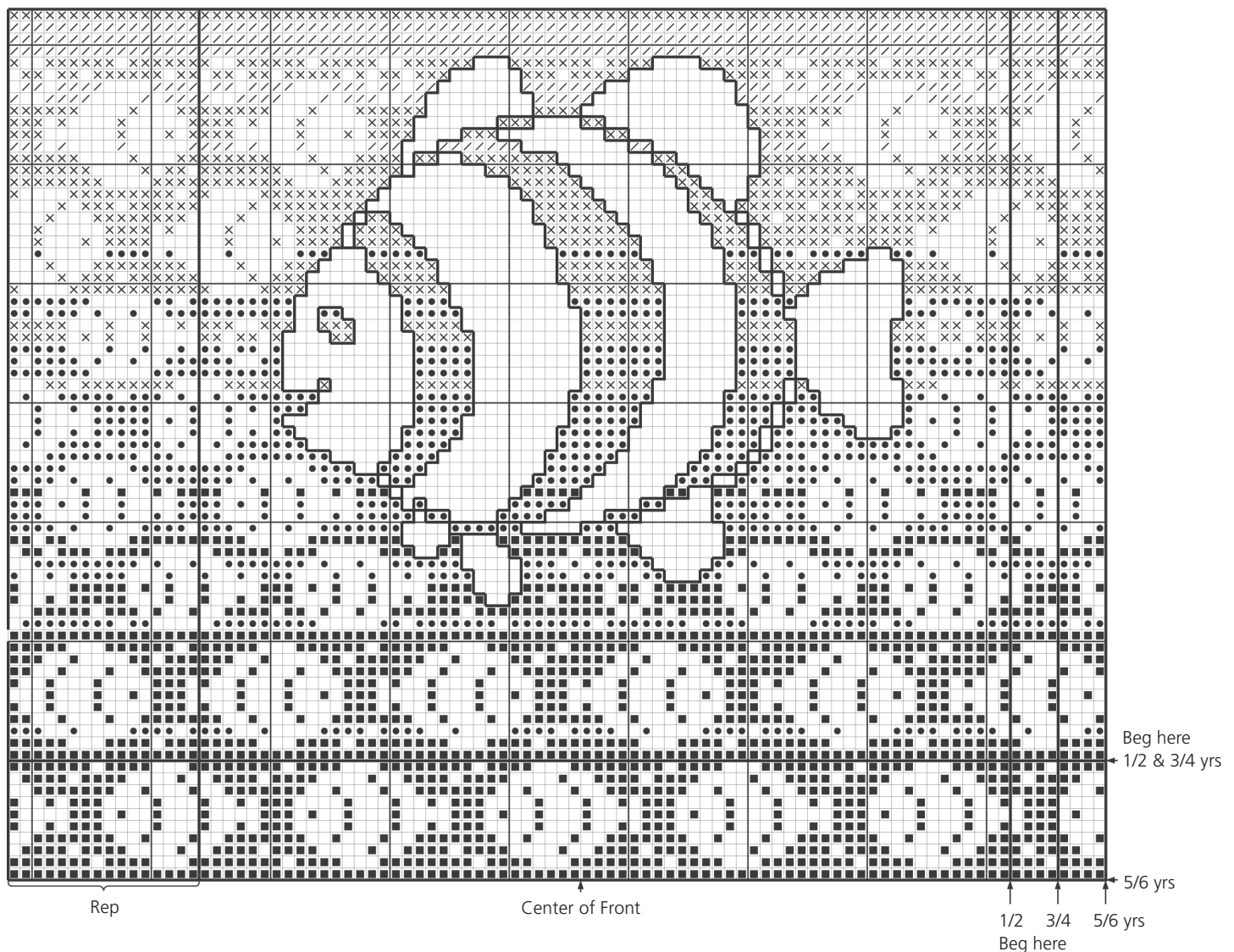
## CAP

**STRIPE PATTERN:** 1 rnd with Color 4, 5 rnds with Color 2, 1 rnd with Color 4, 5 rnds with Color 3, then 1 rnd with Color 4.

With smaller dp needles an Color 1, C O 70 (76, 80) sts. Join and, working in the rnd, mark beg of rnd and beg rnds at center of back. Work 1 5/8"/4 cm of k1 tbl, p1 rib and dec 0 (1, 0) st on last rnd – 70 (75, 80) sts. Change to larger dp needles. Beg St st and work Stripe Pattern (above). Change to Color 2 and cont St st until cap measures approx 4 3/8" (4 3/4", 5 1/8")/11 (12, 13) cm from bottom of rib.

**SHAPING:** Next rnd, \* k12 (13, 14) sts, k2tog; rep from \* to end of rnd – 65 (70, 75) sts. Knit 1 rnd without dec. Next rnd, \* k11 (12, 13) sts, k2tog; rep from \* to end of rnd – 60 (65, 70) sts. Knit 1 rnd without dec. Cont dec next rnd, then every other rnd 9 (10, 11) more times, with 1 less st between dec sts each time. Gather rem 10 sts on a piece of yarn and fasten securely. Make a pom-pom with Color 1 and securely attach to top of cap as shown in photo.

## MAIN PATTERN



- = Color 2 = ocean blue 6027
- = Color 3 = cerulean 6215
- ⊗ = Color 4 = aquamarine 6604
- ▨ = Color 5 = pastel green 7502
- = Color 6 = dandelion 2417
- ▭ = Color 7 = off white 0017
- ▾ = Color 8 = black 0090

## MITTENS

**STRIPE PATTERN:** 1 rnd with Color 4, 5 rnds with Color 3, 1 rnd with Color 4, 5 rnds with Color 2, 1 rnd with Color 4, 5 rnds with Color 3, then 1 rnd with Color 4.

### LEFT MITTEN

With smaller dp needles and Color 1, C O 24 (28, 30) sts. Join and, working in the rnd, mark beg of rnd. Work 2" (2<sup>3</sup>/<sub>8</sub>" , 2<sup>3</sup>/<sub>4</sub>" )/5 (6, 7) cm of k1 tbl, p1 rib. Change to larger dp needles. Beg St st and work first 5 (5, 6) rnds of Stripe Pattern (above).

**THUMB OPENING:** Next rnd, cont pattern and work to last 4 (5, 5) sts, knit rem sts with a piece of scrap yarn for thumb opening, slip these sts back to left needle and work in pattern to end of rnd. Complete Stripe Pattern. Cont St st with Color 2 until hand measures 3<sup>1</sup>/<sub>8</sub>" (3<sup>1</sup>/<sub>2</sub>" , 4")/8 (9, 10) cm, or approx <sup>5</sup>/<sub>8</sub>" (7/<sub>8</sub>" , 7/<sub>8</sub>" )/1.5 (2, 2) cm short of desired length from top of rib. Place side markers at the beg of rnd and after 12 (14, 15) sts.

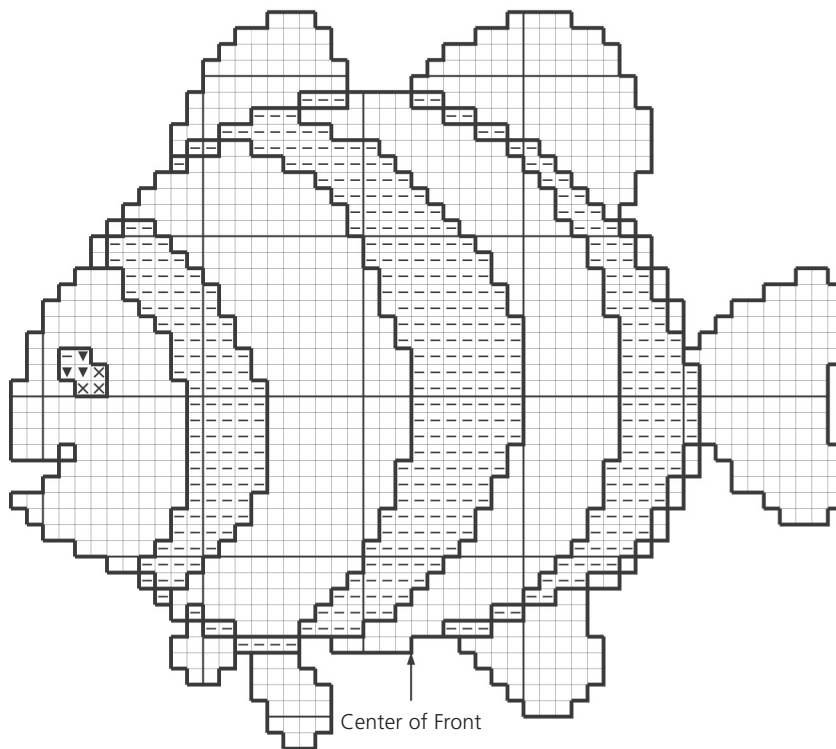
**TOP SHAPING:** Next rnd, \* k2tog, knit to 2 sts before next marker, ssk; rep from \* once more – 20 (24, 26) sts. Cont dec every rnd 4 (5, 5) more times in this manner, with 2 fewer sts between dec sts each time. Gather rem 4 (4, 6) sts on a piece of yarn and fasten securely.

**THUMB:** Remove scrap yarn from thumb opening and slip resulting loops to larger dp needles, and pick up 1 st on each side of thumb opening – 10 (12, 12) sts. Join and, working in the rnd, mark beg of rnd. Beg St st with Color 2 and work until thumb measures desired length. K2tog across next rnd, then gather rem 5 (6, 6) sts on a piece of yarn and fasten securely.

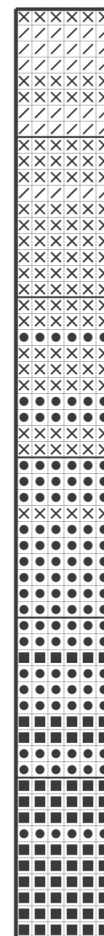
**RIGHT MITTEN:** Work right mitten same as left, placing thumb opening after 12 (14, 15) sts.

**FINISHING:** Securely sew eye button to back of mitten over top of blue button as shown in photo. Embroider mouth using Chain St Embroidery with Color 8 as shown in photo.

Detail diagram, showing Duplicate St Embroidered areas. Work Chain St Embroidery with Color 8 around all areas as shown in photo.

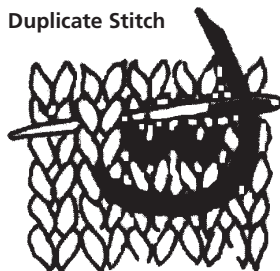


### PULLOVER SLEEVE STRIPE PATTERN

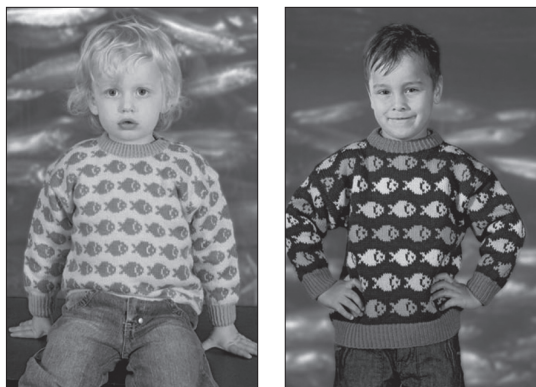


← 1/2  
← 3/4  
← 5/6 yrs  
Beg here

### Duplicate Stitch



- = Color 2 = ocean blue 6027
- = Color 3 = cerulean 6215
- ⊗ = Color 4 = aquamarine 6604
- ⊘ = Color 5 = pastel green 7502
- = Color 6 = dandelion 2417
- ▢ = Color 7 = off white 0017
- ▼ = Color 8 = black 0090



## FALK or DALE BABY ULL

### FALK PULLOVER:

SIZES: 2 4 6 years

Color 1:	150	200	250 gr
navy 5563			
Color 2:	50	50	100 gr
ocean blue 6027			
Color 3:	50	100	100 gr
cerulean 6215			
Color 4:	50	100	100 gr
aquamarine 6604			
Color 5:	50	50	100 gr
pastel green 7502			

### DALE BABY ULL PULLOVER:

SIZES: 1 2 3 4 years

Color 1:	100	150	150	200 gr
pastel green 7502				
Color 2:	50	100	100	100 gr
bright turquoise 6714				
Color 3:	50	50	100	100 gr
lagoon 6435				

**SUGGESTED NEEDLE SIZES:** *Falk*, cir and dp needles in sizes 2.5 mm and 3 mm or 3.5 mm, crochet hook in size 2 mm and st markers; *Dale Baby Ull*, cir and dp needles in sizes 2 mm and 2.5 mm, crochet hook in size 1.5 mm and st markers.  
**Note:** US and metric needle sizes often do not match exactly and size equivalencies have changed. The original version of this pattern was written to use metric size needles; if in doubt as to whether a given US needle size is the same as a metric size, use the metric size needle. As always, please take the time to check your gauge carefully and change needle sizes as needed to obtain the correct gauge.

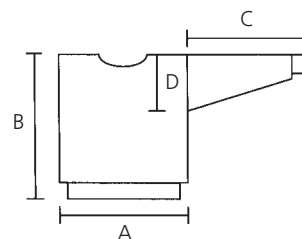
**GAUGE:** *Falk*, 24 sts and 28 rnds over colorwork pattern using larger needles = 4"/10 cm x 4"/10 cm;

*Dale Baby Ull*, 32 sts and 38 rnds over colorwork pattern using larger needles = 4"/10 cm x 4"/10 cm.

**ACCESSORIES:** Dale Baby Ull Pullover, 3 (3, 4, 4) buttons.

### FINISHED MEASUREMENTS:

#### Falk Pullover:



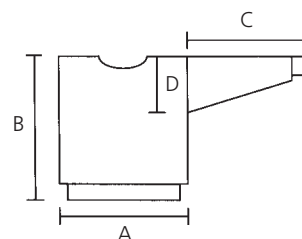
**A** = Chest Width: 27<sup>1</sup>/<sub>8</sub>" (29<sup>1</sup>/<sub>2</sub>", 31<sup>7</sup>/<sub>8</sub>")/  
69 (75, 81) cm

**B** = Body Length: 14<sup>1</sup>/<sub>2</sub>" (16<sup>1</sup>/<sub>2</sub>", 18<sup>7</sup>/<sub>8</sub>")/  
37 (42, 48) cm

**C** = Sleeve Length: 9<sup>7</sup>/<sub>8</sub>" (11", 12<sup>1</sup>/<sub>4</sub>")/  
25 (28, 31) cm

**D** = Armhole Depth: 5<sup>1</sup>/<sub>4</sub>" (5<sup>5</sup>/<sub>8</sub>", 6<sup>1</sup>/<sub>8</sub>")/  
13.5 (14.5, 15.5) cm

#### Dale Baby Ull Pullover:



**A** = Chest Width: 24" (26", 27<sup>5</sup>/<sub>8</sub>", 29<sup>1</sup>/<sub>2</sub>")/  
61 (66, 70, 75) cm

**B** = Body Length: 12<sup>5</sup>/<sub>8</sub>" (14<sup>1</sup>/<sub>2</sub>", 16<sup>1</sup>/<sub>8</sub>", 17<sup>3</sup>/<sub>4</sub>")/  
32 (37, 41, 45) cm

**C** = Sleeve Length: 9" (9<sup>7</sup>/<sub>8</sub>", 10<sup>5</sup>/<sub>8</sub>", 11<sup>3</sup>/<sub>8</sub>")/  
23 (25, 27, 29) cm

**D** = Armhole Depth: 5<sup>1</sup>/<sub>4</sub>" (5<sup>5</sup>/<sub>8</sub>", 5<sup>7</sup>/<sub>8</sub>", 6<sup>1</sup>/<sub>4</sub>")/  
13.5 (14.5, 15, 16) cm

**Watch gauge carefully to obtain the correct finished measurements!**

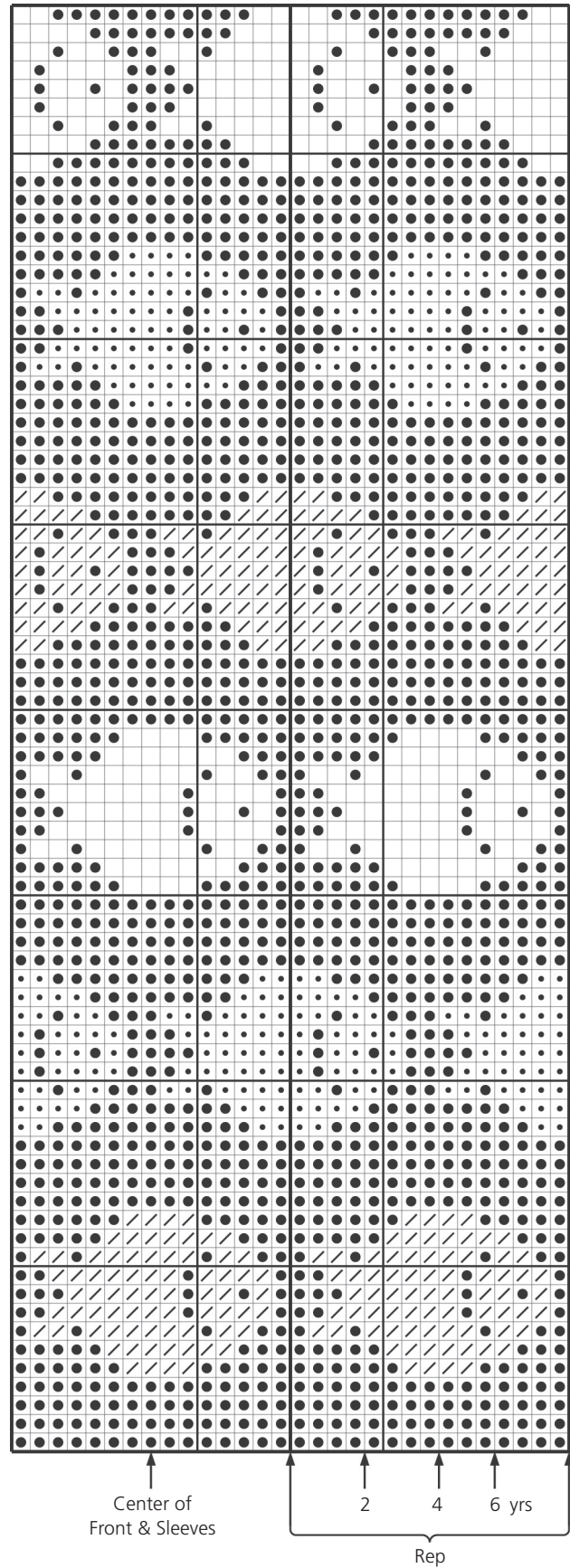
### FALK PULLOVER

**BODY:** With smaller cir needle and Color 2, C O 164 (180, 194) sts. Join and, working in the rnd, mark beg of rnd. Work 1<sup>5</sup>/<sub>8</sub>" (2", 2")/4 (5, 5) cm of k1 tbl, p1 rib and inc 1 (0, 1) st on last rnd – 165 (180, 195) sts. Change to larger cir needle and place side markers at the beg of rnd and after 83 (91, 97) sts. Beg St st and Pattern A, beg each size as shown on graph and work 15-st rep to end of rnd. Cont 78-rnd rep until body measures approx 12<sup>5</sup>/<sub>8</sub>" (14<sup>1</sup>/<sub>2</sub>", 16<sup>1</sup>/<sub>2</sub>")/32 (37, 42) cm from bottom of rib, ending with 2 – 4 rnds of Color 1 after a fish.

**FRONT NECK OPENING:** Next rnd, work first 37 (40, 43) sts as set, C OFF the next 9 (11, 11) sts for front neck opening, then work to end of rnd – 156 (169, 184) sts. Cut yarn and slip left front shoulder sts from left needle to right needle. Reattach yarn and, working back and forth, beg rows at front neck edges. Cont pattern and C OFF 4 sts at the beg of first 2 rows, 2 sts at the beg of next 4 rows, then dec 1 st at the beg and end of every other row 2 (2, 3) times. AT THE SAME TIME, when body measures 13<sup>3</sup>/<sub>4</sub>" (15<sup>3</sup>/<sub>4</sub>", 18<sup>1</sup>/<sub>8</sub>")/35 (40, 46) cm from bottom of rib, shape back neck opening.

**BACK NECK OPENING:** Next row, cont rem front neck shaping and work front sts, and first 30 (33, 35) sts of back, C OFF the next 22 (23, 28) sts for back neck opening, then work to end of row. Working each side of body separately (over both front and





PATTERN A  
Rep

Center of  
Front & Sleeves

2

4

6 yrs

Rep

- = Color 1 = navy 5563
- ▨ = Color 3 = cerulean 6215
- ◻ = Color 4 = aquamarine 6604
- = Color 5 = pastel green 7502

back of same shoulder), cont pattern and C OFF every other row at back neck edge, 2 sts once, then 1 st once – 54 (60, 64) sts. Work without further shaping until body measures 14½" (16½", 18⅞")/37 (42, 48) cm from bottom of rib, then C OFF. Complete other side of body to match.

**SLEEVES:** With smaller dp needles and Color 2, C O 42 (44, 46) sts. Join and, working in the rnd, mark beg of rnd. Work 2"/5 cm of k1 tbl, p1 rib. Knit 1 rnd and inc 12 sts evenly spaced across rnd – 54 (56, 58) sts. Change to larger dp needles. Beg St st and Pattern A, placing center st of graph at center of sleeve. AT THE SAME TIME, inc 1 st at the beg and end of every seventh rnd 7 (8, 5) times, then every sixth rnd 0 (0, 5) times, leaving 2 sts between inc sts and working inc sts into pattern – 68 (72, 78) sts. Cont without further inc until sleeve measures approx 9⅞" (11", 12¼")/25 (28, 31) cm from bottom of rib, ending with 4 rnds of Color 1 after a fish. Purl 5 rnds with Color 1 for facing, then C OFF loosely. Make second sleeve to match.

**FINISHING:** Lay body and sleeves out to finished measurements and steam lightly; do not steam ribs. Lay sleeves flat and measure width at top of sleeves below facings. Mark this width on each side of body from shoulders down for armholes. Sew 2 machine seams, 2 sts out from where the side markers were placed and across bottom of the 4 sts for armholes. Cut between the pairs of machine stitching, being careful not to cut stitching at bottom of armholes. Sew front and back tog at shoulders.

**NECKBAND:** With smaller cir or dp needles, Color 1 and with RS facing, pick up 12 sts per 2"/5 cm along neck edge using a crochet hook ½-metric size smaller than needles to pick up an even number of sts k-wise. Join and, working in the rnd, mark beg of rnd. Change to Color 2 and work 2" (2", 2⅜")/5 (5, 6) cm of k1 tbl, p1 rib. C OFF loosely in rib. Fold neckband to inside along middle of rib and sew loosely to WS. Sew sleeves into armholes as shown on page 1. On inside, turn facings toward body, covering cut edges, then sew neatly to WS.

### DALE BABY ULL PULLOVER

**BODY:** With smaller cir needle and Color 2, C O 194 (210, 224, 240) sts. Join and, working in the rnd, mark beg of rnd. Work 1⅝" (1⅝", 2", 2")/4 (4, 5, 5) cm of k1 tbl, p1 rib and inc 1 (0, 1, 0) st on last rnd – 195 (210, 225, 240) sts. Change to larger cir needle and place side markers at the beg of rnd and after 97 (105, 113, 121) sts. Beg St st and Pattern B, beg each size as shown on graph and work 15-st rep to end of rnd. Cont 26-rnd rep until body measures approx 11" (12⅝", 14⅞", 15¾")/28 (32, 36, 40) cm from bottom of rib, ending with 3 – 4 rnds of Color 1 after a fish.

**FRONT NECK OPENING:** Next rnd, work first 42 (45, 48, 51) sts as set, C OFF the next 13 (15, 17, 19) sts for front neck opening, then work to end of rnd – 182 (195, 208, 221) sts. Cut yarn and slip left front shoulder sts from left needle to right needle. Reattach yarn and, working back and forth, beg rows at front neck edges. Cont pattern and C OFF 3 sts at the beg of first 2 rows, 2 sts at the beg of next 4 rows, then dec 1 st at the beg and end of every other row 3 times. AT THE SAME TIME, when body measures 11¾" (13¾", 15⅝", 17")/30 (35, 39, 43) cm from bottom of rib, shape back neck opening.

**BACK NECK OPENING:** Next row, cont rem front neck shaping and work front sts, and first 38 (40, 43, 46) sts of back, C OFF the next 22 (25, 26, 27) sts for back neck opening, then work to end of row. Working each side of body separately (over both front and back of same shoulder), cont pattern and C OFF every other row at back neck edge, 2 sts twice, then 1 st once – 65 (70, 76, 82) sts. Work without further shaping until body measures 12⅝" (14½", 16⅞", 17¾")/32 (37, 41, 45) cm from bottom of rib, then C OFF. Complete other side of body to match.

**SLEEVES:** With smaller dp needles and Color 2, C O 48 (50, 52, 54) sts. Join and, working in the rnd, mark beg of rnd. Work 1⅝" (1⅝", 2", 2")/4 (4, 5, 5) cm of k1 tbl, p1 rib. Knit 1 rnd and inc 12 (14, 16, 18) sts evenly spaced across rnd – 60 (64, 68, 72) sts. Change to larger dp needles. Beg St st and Pattern B, placing center st of graph at center of sleeve. AT THE SAME

TIME, inc 1 st at the beg and end of every fifth rnd 10 (15, 13, 17) times, then every fourth rnd 4 (0, 3, 0) times, leaving 2 sts between inc sts and working inc sts into pattern – 88 (94, 100, 106) sts. Work without further inc until sleeve measures approx 9" (9⅞", 10⅝", 11⅜")/23 (25, 27, 29) cm from bottom of rib, ending with 4 rnds of Color 1 after a fish. P 5 rnds with Color 1 for facing, then C OFF loosely. Make second sleeve to match.

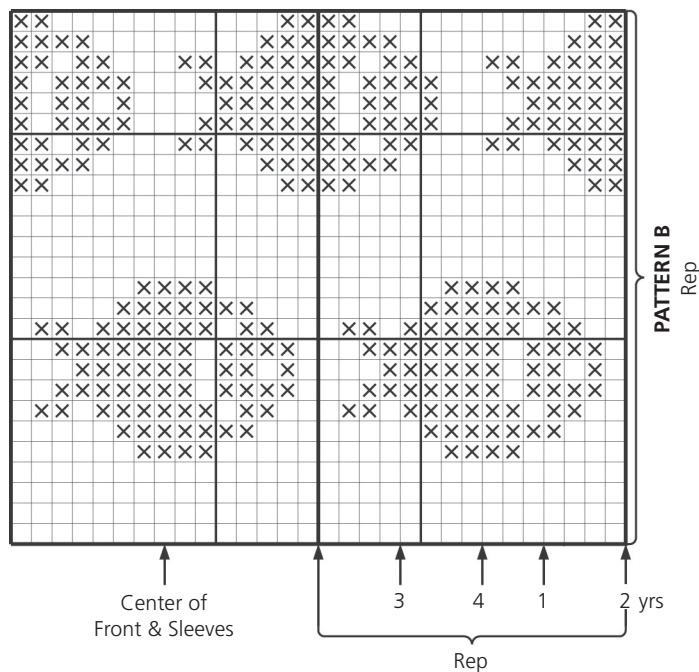
**FINISHING:** Lay body and sleeves out to finished measurements and steam lightly; do not steam ribs. Lay sleeves flat and measure width at top of sleeves below facings. Mark this width on each side of body from shoulders down for armholes. Sew 2 machine seams, 2 sts out from where the side markers were placed and across bottom of the 4 sts for armholes. Cut between the pairs of machine stitching, being careful not to cut stitching at bottom of armholes. Sew front and back tog at right shoulder. Beg at armhole and sew tog approx 1"/2.5 cm along left shoulder.

**NECKBAND:** With smaller cir or dp needles, Color 1 and with RS facing, beg at left shoulder and pick up 16 sts per 2"/5 cm along neck edge using a crochet hook ½-metric size smaller than needles to pick up an odd number of sts k-wise. Working back and forth, beg with a RS row and change to Color 2.

**Row 1 (RS):** \* K1 tbl, p1; rep from \* to last st, end k1 tbl.

**Row 2 (WS):** \* P1 tbl, k1; rep from \* to last st, end p1 tbl.

Rep these 2 rows until neckband measures 2" (2", 2⅜", 2⅜")/5 (5, 6, 6) cm. C OFF loosely in rib. Fold neckband to inside along middle of rib and sew loosely to WS, and neatly sew ends of neckband closed. Mark placement for buttons along left back shoulder and end of neckband, centering button on neckband, and evenly spacing rem buttons along open edge of shoulder. Make button loops on left front shoulder over buttons. Securely sew buttons to back shoulder and end of neckband as marked. Sew sleeves into armholes as shown on page 1. On inside, turn facings toward body, covering cut edges, then sew neatly to WS.



□ = Color 1 = pastel green 7502  
 ⊗ = Color 3 = lagoon 6435



Nr. 20904  
Design: Kari Haugen  
Falk, str 2 – 6 år



Nr. 20905  
Design: Kari Haugen  
Falk, str. 2-6 år  
Dale Baby Ull, str. 1-4 år





Nr. 20901  
Design: Kari Haugen  
Freestyle, str 1-4 år



Nr. 20904  
Design: Kari Haugen  
Falk, str 2-6 år



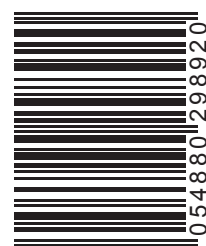
0210-0209 Dalegarn AS 2009 © - I opplag - Foto: Tommy Næss. - Layout/Repro: Trinn2 AS - Trykk: Havel AS.  
Takk til Akvariet i Bergen for svært godt samarbeid og Barnas Hus for lån av klær og tilbehør. Tusen takk til modellene: Adrian, Henrik, Jonathan, Kari, Noah og Pernille.



**DALEGARN**  
dalegarn.no

Dalegarn AS, 5721 Dalekvam, Norge  
Tlf. + 47 56595400 Faks + 47 56595450

FORHANDLER:



7