

NR 219 DALEGARN

Tilbehør

Daletta
Heilo
Hubro



DALEGARN

dalegarn.no



• HELO • design: Daledesign

• HEILO • design: Daleedesign



• HEILO • design: Daleedesign



• HEILO • design: Daleedesign



• HEILO • design: Daleedesign

NORWEGIAN PATTERNS

Most Norwegian knitting designs, especially those involving color work, are symmetrical in nature along central stitches of both front and back. Thus, due to the complexity of Norwegian patterning, an even number of repeats often does not occur as in Fair Isle knitting; the knitter is instructed to place markers at specified points in the work, marking the patterns' side edges. It is important to take care when reading instructions and charts to keep the designs centered on both the garment's front and back. To work from a Norwegian pattern graph begin at the first marker (left side of front for pullovers or right front opening for cardigans) with the stitch marked "Beg here" on the graph and work to the next marker (right side of front/back for pullovers and cardigans). Work the back of the body, beginning again as instructed on the graph. For pullovers, complete the round or for cardigans, work to the next marker and begin the left front so that the left front is a mirror image of the right front. The pattern will be centered on both front and back of the garment, matching at the shoulders.

SIZES & GAUGE

Study the finished measurements listed in the pattern; the smallest size is listed first on both the graphs and in the pattern instructions. Many of the designs are generously sized, especially the unisex sweaters, so it is important to choose the size that will fit properly.

It is important to maintain the correct gauge while knitting because the finished measurements and shape of your garment are completely dependent upon gauge. If you knit looser than the gauge given in the pattern instructions, try needles one size smaller. If you knit tighter, try needles one size larger.



ABBREVIATIONS

approx = approximately	mm = millimeter(s)
beg = begin(ning)	p = purl
C O = cast on	p-wise = purlwise, as if to purl
C OFF = cast off	pssso = pass slipped stitch(es) over
CC = contrast color	p2tog = purl 2 stitches together
cn = cable needle	rem = remain(ing)(der)
cir = circular	rep = repeat(s)(ing)
cm = centimeter(s)	rnd(s) = round(s)
cont = continu(e)(ing)	RS = right side(s)
dec = decreas(e/s)(ing)	ssk = slip next two sts, one at a time, then insert tip of left needle into fronts of these 2 sts and knit them together
dp = double pointed	st(s) = stitch(es)
g st = garter stitch	St st = stockinette stitch
gr = gram(s)	tbl = through the back of the loop(s)
inc = increas(e/s)(ing)	tog = together
k = knit	WS = wrong side(s)
k-wise = knitwise, as if to knit	yd(s) = yard(s)
k2tog = knit 2 stitches together	yo = yarn over needle to make 1 stitch
m = meter(s)	
MC = main color	

DALETTA

100% Pure Superwash Fingering Weight Wool. *Care instructions:* Machine wash (delicate cycle) or hand wash in cool water using mild/neutral detergent. Dry flat; do not put in dryer. May be dry cleaned.

FALK

100% Pure Superwash Sport Weight Wool. *Care instructions:* Machine wash (delicate cycle) or hand wash in cold water using mild/neutral detergent. Dry flat; do not put in dryer. May be dry cleaned.

HEILO

100% Pure New Classic Norwegian Sport Weight Wool. *Care instructions:* Hand wash in cold water using mild/neutral detergent. Dry flat; do not put in dryer. May be dry cleaned.

HUBRO

100% Pure New Super Bulky Weight Wool. *Care instructions:* Hand wash in cold water using mild/neutral detergent. Dry flat; do not put in dryer. May be dry cleaned.

LERKE

52% Merino Wool/48% Cotton DK Weight Yarn. *Care Instructions:* Machine wash (delicate cycle) or hand wash in cold water using mild/neutral detergent. Dry flat; do not put in dryer. May be dry cleaned.



Do not
bleach



Gentle
cycle spin



Steam lightly with
steam iron, if needed



Dry Clean with perchlorethylene
using normal methods

The patterns in this book have been developed and tested by our design division. Every effort has been made to make the knitting directions in this book as accurate as possible. However, we cannot be responsible for variations due to individual knitters, human error or typographical mistakes.

Copyright 2010, Dale of Norway, Inc. First edition. All rights reserved. No portion of this book may be copied, leased, resold or otherwise distributed without the written permission of Dale of Norway, Inc. For further information write: Dale of Norway, 4750 Shelburne Road, Shelburne, VT 05482.



DALETTA

ONE SIZE

CAP: 100 gr
dark taupe 2671

NECK WARMER: 200 gr
dark taupe 2671

MITTENS: 100 gr
dark taupe 2671

SUGGESTED NEEDLE SIZES: Cir and dp needles in size 2.5 mm, crochet hook in size 2 mm, and st markers. **Note:** US and metric needle sizes often do not match exactly and size equivalencies have changed. The original version of this pattern was written to use metric size needles; if in doubt as to whether a given US needle size is the same as a metric size, use the metric size needle. As always, please take the time to check your gauge carefully and change needle sizes as needed to obtain the correct gauge.

GAUGE: 26 sts over Seed St = 4"/10 cm

ACCESSORIES: 8 pearl buttons, approx 1"/2.5 cm; 1 for Cap, and 7 for Neck Warmer.

Watch gauge carefully to obtain the correct finished measurements!

SEED ST:

(multiple of 2 sts)

Worked in the round:

Rnd 1: * P 1 st, k 1 st; rep from * to end of rnd.

Rnd 2: * K 1 st, p 1 st; rep from * to end of rnd.

Rep these 2 rnds for pattern.

Worked back and forth:

Row 1: * P 1 st, k 1 st; rep from * to end of row.

Rep Row 1 for pattern.

CAP

Fits head approx 22½"/57 cm

LOWER BAND: With dp needles, C O 12 sts. Working back and forth, beg g st and work until band measures approx 22⁷/₈"/58 cm, or desired length to fit around head, plus 2"/5 cm. C OFF neatly.

CROWN: With cir needle, beg at end of one long edge of band and pick up 146 sts, ending 2"/5 cm before other end of band, using a crochet hook ½-metric size smaller than needles to pick up sts k-wise. Cut yarn. Slip first 37 sts from left needle to right needle. Reattach yarn and, working in the rnd, mark beg of rnd; beg rnds at center back of cap.

Beg Seed St and work until cap measures approx 7⁷/₈"/20 cm from bottom of lower band.

SHAPING: Next rnd, * p2tog, k2tog; rep from * to end of rnd – 73 sts.

Next rnd, k 1 st, * p2tog, k2tog; rep from * to end of rnd – 37 sts.

Next rnd, p 1 st, * k2tog, p2tog; rep from * to end of rnd – 19 sts.

Gather rem sts on a piece of yarn and fasten securely. Pin loose end of lower band over top of other end, then securely sew a button to band through both layers, placing button approx 1"/2.5 cm from end of band as shown.

NECK WARMER

Size: 42⁷/₈" x 11"/109 x 28 cm

Note: The neck warmer is shown wrapped twice around the neck; to do this, button the ends, twist the piece into a figure eight, and then bring both loops together and slip over your head.

With cir needle, C O 280 sts. Working back and forth, beg Seed St and work until neck warmer measures 1⁵/₈"/4 cm, ending with a WS row. * Next row, work 8 sts, C OFF the next 6 sts for buttonhole, then work to end of row. Next row, C O 6 new sts over C OFF sts of previous row. Work approx 2"/5 cm of Seed St; rep from * 3 more times, then work one more buttonhole. Cont working until neck warmer measures 11"/28 cm. C OFF loosely.

FINISHING: Sew 5 buttons to left side of neck warmer under buttonholes. If desired, sew 2 buttons to the WS under the top 2 buttons; these buttons will show on RS when top edge of neck warmers when folded to the outside.

MITTENS

Hand Circumference: 8¼"/21 cm

RIGHT MITTEN: With dp needles, C O 54 sts. Join and, working in the rnd, mark beg of rnd. Work 2³/₄"/7 cm of k1, p1 rib. Work 1 rnd of Seed St and inc 4 sts evenly spaced across rnd – 58 sts. Place side markers at the beg of rnd and after 29 sts.

HAND: Cont Seed St and work until hand measures 2"/5 cm from top of rib.

Next rnd, k first 12 sts with a piece of contrast yarn for thumb opening, then slip these sts back to left needle, work these sts in Seed St, then work to end of rnd. Cont Seed St until hand measures approx 5⁷/₈"/15 cm, or 1³/₈"/3.5 cm short of desired length from top of rib.

SHAPING: Next rnd, * k 1 st, ssk, work to 2 sts before next marker, k2tog; rep from * once more – 54 sts. Work 1 rnd without dec. Cont dec next rnd, then every other rnd 5 more times – 30 sts rem. Divide sts evenly on 2 dp needles and graft tog using Kitchener st. **Option:** turn mitten with WS out, divided sts evenly on 2 dp needles and C OFF using 3-needle C OFF.

THUMB: Remove contrast yarn from thumb opening and slip resulting loops to dp needles, and pick up 1 st on each end of opening – 26 sts. Join and, working in the rnd, mark beg of rnd. Cont Seed St until thumb measures approx 2³/₈"/6 cm, or just short of desired length.

Next rnd, work 2 sts, * k2tog, work 2 sts; rep from * to end of rnd – 20 sts. Next rnd, * work 2 sts, k2tog; rep from * to end of rnd. Gather rem 15 sts on a piece of yarn and fasten securely.

LEFT MITTEN: Work left mitten same as right, placing thumb opening after 17 sts.



HUBRO

ONE SIZE

SCARF, CAP & MITTENS:

Color 1:	200 gr
ruby 4636	
Color 2:	200 gr
cerise 4526	
Color 3:	200 gr
cranberry 4227	

SUGGESTED NEEDLE SIZES: Cir and dp needles in size 9 mm, crochet hook in size 9 mm, st markers and holders. **Note:** US and metric needle sizes often do not match exactly and size equivalencies have changed. The original version of this pattern was written to use metric size needles; if in doubt as to whether a given US needle size is the same as a metric size, use the metric size needle. As always, please take the time to check your gauge carefully and change needle sizes as needed to obtain the correct gauge.

GAUGE: 10 sts and 13 rows over St st = 4"/10 cm x 4"/10 cm

Watch gauge carefully to obtain the correct finished measurements!

SCARF

Size: 7¹/₈"/18 cm wide

Cut a strand of each color approx 11 yds/10 m long for fringe to be attached later.

With cir or dp needles and Color 1, C O 18 sts. Working back and forth, k 6 rows.

* Cont g st over first and last 2 sts of every row, beg with a RS row and work 20 rows of St st. K 4 rows. Rep from * until the ball of Color 1 has been used up, making sure to end with a complete row. Change to Color 2 and cont working until that ball has been used up, then change to Color 3 and cont working until enough yarn rem to work 7 more rows. K 6 rows, then C OFF. (**Note:** The last section of St st may not be 20 rows long when you reach the ending point; adjust the scarf to the desired length.)

FRINGE: Using colors in desired order, crochet fringe of varying lengths along both ends of scarf in this manner: With crochet hook, attach yarn to edge of scarf with a slip st. Make a ch approx 2³/₄" – 5⁷/₈"/7 – 15 cm long. Work 4 dc in fourth ch from hook, then work a slip st in top of first dc to form a ball. Cut yarn and draw through loop. Fasten end to ch at base of ball. Work 3 fringe of each color along both ends of scarf.

MITTENS

Hand Circumference: 8⁷/₈"/22.5 cm

LEFT MITTEN: With dp needles and Color 1, C O 20 sts. Join and, working in the rnd, mark beg of rnd. P 1 rnd, k 1 rnd, then p 1 rnd.

Beg St st and work until mitten measures 3¹/₈"/8 cm from bottom edge. P 1 rnd, k 1 rnd, then p 1 rnd.

HAND: K 1 rnd and inc 2 sts evenly spaced across rnd – 22 sts. Place side markers at the beg of rnd and after 11 sts. Change to Color 2. Cont St st and work until hand measures 2"/5 cm from top of cuff. Next rnd, k 7 sts, k next 3 sts with a piece of scrap yarn for thumb opening, slip these sts back to left needle, then k to end of rnd. Cont working until hand measures 5⁷/₈"/15 cm, or approx 1¹/₈"/3 cm short of desired length from top of cuff.

SHAPING: Next rnd, * ssk, k to 2 sts before next marker, k2tog; rep from * once more – 18 sts. Cont dec every rnd in this manner 3 more times. Gather rem 6 sts on a piece of yarn and fasten securely.

THUMB: Remove scrap yarn from thumb opening and slip resulting loops to dp needles and pick up 1 st on each end of opening – 8 sts. Join and, working in the rnd, mark beg of rnd. Beg St st with Color 1 and work until thumb measures 2³/₄"/7 cm, or desired length. Next rnd, k2tog across rnd, then gather rem 4 sts on a piece of yarn and fasten securely.

CORD: With crochet hook and Color 3, leave a tail approx 29⁷/₈"/76 cm long, and crochet a chain 19³/₄"/50 cm long. Work 4 dc in fourth ch from hook, then work a slip st in top of first dc to form a ball. Cut yarn and draw through loop. Fasten end to ch at base of ball.

Thread beg end through mitten above cuff where Colors 1 and 2 meet, beg and end at outside edge of hand as shown in photo. Insert hook into beg ch and, using long end of yarn at beg of ch, work a ball at rem end of ch.

RIGHT MITTEN: Work right mitten same as left, placing thumb opening after 1 st at beg of rnd.

CAP

Fits head approx 20⁷/₈"/53 cm

With cir needle and Color 1, C O 42 sts. Join and, working in the rnd, mark beg of rnd and beg rnds at center back. P 1 rnd, k 1 rnd, then p 1 rnd. Beg St st and work until cap measures approx 2³/₈"/6 cm from bottom edge. P 1 rnd, k 1 rnd, then p 1 rnd. K 1 rnd and inc 10 sts evenly spaced across rnd – 52 sts. *K 12 rnds, p 1 rnd, k 1 rnd, then p 1 rnd; rep from * until cap measures approx 10¹/₄"/26 cm from bottom edge. AT THE SAME TIME, when cap measures 4"/10 cm from bottom edge, change to Color 2, then when cap measures 7⁷/₈"/20 cm from bottom edge, change to Color 3.

SHAPING: Change to dp needles. Next rnd, * k 2 sts, k2tog; rep from * to end of rnd – 39 sts. K 3 rnds without dec. Next rnd, k 1 st, * k2tog; rep from * to end of rnd – 20 sts. K 2 rnds without dec. Gather rem sts on a piece of yarn and fasten securely.



DALETTA

WOMEN'S SHOE SIZES: 6 (36) 7½ (38) 9 (40) 10 (42)

Note: Sizes are shown in US and (European sizes)**4-COLOR STRIPED SOCKS:**

Color 1:	50	50	50	50 gr
Color 2:	50	50	50	50 gr
Color 3:	50	50	50	50 gr
Color 4:	50	50	50	50 gr

COLORWAYS:**Option** **Color Number**

- I** C1 - tangerine 2817
C2 - yellow 2015
C3 - fuchsia 4516
C4 - pastel pink 4711

- II** C1 - horizon 6015
C2 - natural 0020
C3 - pastel blue 5703
C4 - midnight blue 5473

2-COLOR STRIPED SOCKS:

Color 1:	50	50	50	50 gr
pastel blue 5703				
Color 2:	50	50	50	50 gr
natural 0020				

SOLID COLOR SOCKS: 100 100 100 100 gr**COLORWAYS:****Option** **Color Number**

- I** tangerine 2817

- II** midnight blue 5473

SUGGESTED NEEDLE SIZES: Dp needles in size 3 mm, st markers and holders. **Note:** US and metric needle sizes often do not match exactly and size equivalencies have changed. The original version of this pattern was written to use metric size needles; if in doubt as to whether a given US needle size is the same as a metric size, use the metric size needle. As always, please take the time to check your gauge carefully and change needle sizes as needed to obtain the correct gauge.

GAUGE: 28 sts and 38 rnds over rib, slightly stretched = 4"/10 cm x 4"/10 cm.

FINISHED MEASUREMENTS:

Leg Circumference: 7½" (7½", 8", 8")/19 (19, 20.5, 20.5) cm
Foot Length: 7⅝" (8⅞", 9¼", 9⅝")/19.5 (22.5, 23.5, 24.5) cm

Watch gauge carefully to obtain the correct finished measurements!

SUGGESTED STRIPE PATTERNS

2-Color Striped Sock: For the cuff, work 1 rnd of each color; and for the leg and foot, beg with next color after last stripe of cuff and work 6 rnds of each color.

4-Color Striped Sock: For socks with equal stripes, work 6 rnds of each color.

For socks with alternating wide and narrow stripes, work 2 rnds with Color 2 between wide stripes of 12 rnds each.

SOLID COLOR SOCKS

With dp needles, C O 52 (52, 56, 56) sts. Join and, working in the rnd, mark beg of rnd. Work k2, p2 rib until cuff measures 5⅞" (6¼", 6¾", 7⅛")/15 (16, 17, 18) cm from bottom of rib.

HEEL: Working back and forth in St st over first and last 13 (15, 15, 17) sts, slip rem 26 (22, 26, 22) sts to st holders. Work until heel flap measures 2" (2", 2⅜", 2⅜")/5 (5, 6, 6) cm, ending with a WS row.

TURNING THE HEEL: K 15 (17, 17, 19) sts, k2tog tbl, k 1 st, then turn. Slip first st, p 5 sts, p2tog, p 1 st, then turn. Slip first st, k 6 sts, k2tog tbl, k 1 st, then turn. Slip first st, p 7 sts, p2tog, p 1 st, then turn. Cont working in this manner, working 1 more st at end of each row before next dec until all heel sts have been worked – 16 (18, 18, 20) sts rem.

INSTEP: With RS facing, k heel sts, pick up 12 (14, 15, 15) sts along side of heel flap, place marker, work sts from holder in rib, place marker, pick up 12 (14, 15, 15) sts along rem side of heel flap, then k 8 (9, 9, 10) heel sts – 66 (68, 74, 72) sts. Working in the rnd again, beg rnds at center under foot.

Next rnd, k to 2 sts before first instep marker, k2tog, work in rib to next instep marker, ssk, then k to end of rnd – 64 (66, 72, 70) sts. Cont dec every rnd in this manner 6 (7, 8, 7) more times – 52 (52, 56, 56) sts.

FOOT: Work without further dec until foot measures 6¼" (7½", 7⅞", 8¼")/16 (19, 20, 21) cm, or approx 1⅜"/3.5 cm short of desired length from heel. K 3 rnds.

TOE: Place side markers 13 (13, 14, 14) sts out from beg and end of rnd. Next rnd, * k to 3 sts before side marker, k2tog, k 2 sts, ssk; rep from * once more, then k to end of rnd – 48 (48, 52, 52) sts. Cont dec every rnd in this manner 9 more times – 12 (12, 16, 16) sts rem.

FINISHING: Evenly divide sts on 2 needles. Graft toe tog using Kitchener st. Make second sock to match.

STRIPED SOCKS

Work striped socks in same manner as solid color socks, working desired stripe pattern. For heels and toes, use same color for heel and toe as color used to C O, or use next stripe color as shown in photos.



DALETTA

ONE SIZE

CAP:

Color 1: 50 gr
grey heather 0007

Color 2: 50 gr or remnants
black 0090

SCARF:

Color 1: 150 gr
grey heather 0007

Color 2: 50 gr or remnants
black 0090

GLOVES:

Color 1: 100 gr
grey heather 0007

Color 2: 50 gr or remnants
black 0090

SUGGESTED NEEDLE SIZES: Cir and dp needles in size 2.5 mm, blunt tapestry needle, st markers and holders. **Note:** US and metric needle sizes often do not match exactly and size equivalencies have changed. The original version of this pattern was written to use metric size needles; if in doubt as to whether a given US needle size is the same as a metric size, use the metric size needle. As always, please take the time to check your gauge carefully and change needle sizes as needed to obtain the correct gauge.

GAUGE: 28 sts and 38 rows/rnds over St st = 4"/10 cm x 4"/10 cm.

Watch gauge carefully to obtain the correct finished measurements!

SPECIAL ABBREVIATIONS:

M1-p = make 1 purlwise = insert left needle under strand between stitches, from front to back, and purl through the back of the loop

CAP

Size: Fits head to 21½"/54.5 cm

With cir needle and Color 2, C O 152 sts. Join and, working in the rnd, mark beg of rnd; beg rnds at center back. Work 1 rnd of k2, p2 rib. Change to Color 1 and cont rib until cap measures 1⅝"/4 cm.

Beg reverse St st (p every rnd) and dec 2 sts evenly spaced across first rnd – 150 sts. Place 6 markers evenly spaced across rnd, with 25 sts between each marker.

Next rnd, * M1-p, p 24 sts, M1-p, p 1 st; rep from * to end of rnd – 162 sts. P 5 rnds without inc. Next rnd, * M1-p, p 26 sts, M1-p, p 1 st; rep from * to end of rnd – 174 sts. P 5 rnds without inc. Inc next rnd, then every sixth rnd once more, with 2 more sts between inc sts each time – 198 sts. Work Pattern A.

SHAPING: Cont reverse St st and change to dp needles when needed.

Next rnd, slip first st, * p to 2 sts before marker, slip 1 st p-wise, k2tog, pss0; rep from * to end of rnd, working slip st from beg of rnd in last dec at end of rnd – 186 sts. P 2 rnds without dec. Rep these 3 rnds 15 more times. Gather rem 6 sts on a piece of yarn and fasten securely.

With blunt tapestry needle threaded with Color 2, work small crosses over twisted sts on rnds 1, 7 and 13 of Pattern A as shown in photo, stranding yarn across WS so cap does not pucker on RS.

SCARF

Size: 8⅞" x 58⅝"/22.5 x 149 cm

With cir needle and Color 2, C O 62 sts. Working back and forth, k 3 rows. Change to Color 1. Working first and last 3 sts of every row in g st, beg reverse St st (p side of St st is RS of scarf), and work until scarf measures 3⅞"/8 cm from bottom edge, ending with a WS row.

Keeping first and last 3 sts in g st, work Pattern B. Cont reverse St st and work until scarf measures approx 53½"/136 cm from bottom edge, ending with a WS row.

Work Pattern B again. Work 3"/7.5 cm of reverse St st, ending with a WS row.

Change to Color 2. K 3 rows, then C OFF neatly k-wise.

FINISHING: Lay scarf out to finished measurements and steam lightly. With blunt tapestry needle threaded with Color 2, work small crosses over twisted sts on rnds 1, 7 and 13 of Pattern B as shown in photo, stranding yarn across WS so scarf does not pucker on RS.

GLOVES

Hand circumference: 7⅝"/19.5 cm

RIGHT GLOVE: With dp needles and Color 2, C O 56 sts. Join and, working in the rnd, mark beg of rnd. Work 1 rnd of k2, p2 rib. Change to Color 1 and cont rib until glove measures 4"/10 cm. P 1 rnd and dec 2 sts evenly spaced across rnd – 54 sts.

HAND: Beg reverse St st (p every rnd), and work until hand measures ⅞"/2 cm above rib. Work Pattern A.

Next rnd, p 27 sts, p next 10 sts with a piece of scrap yarn for thumb opening, slip these sts back to left needle, then p to end of rnd. Cont working until hand measures approx 3½"/9 cm above rib and inc 2 sts evenly spaced across last rnd – 56 sts.

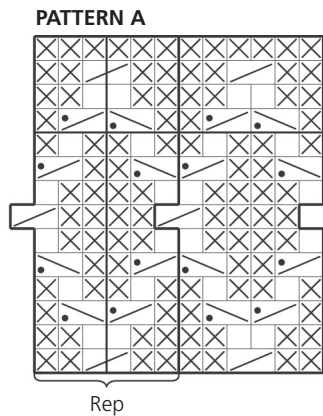
LITTLE FINGER: Slip first and last 6 sts to separate needles, then rem 44 sts to st holders. Redistribute sts for little finger onto 3 dp needles and C O 2 new sts across opening next to ring finger – 14 sts. Join and, working in the rnd, mark beg of rnd. Cont reverse St st until little finger measures approx 2⅞"/7.5 cm, or just short of desired length.

Next rnd, * p2tog, p 2 sts; rep from * to last 2 sts, end p2tog – 10 sts.

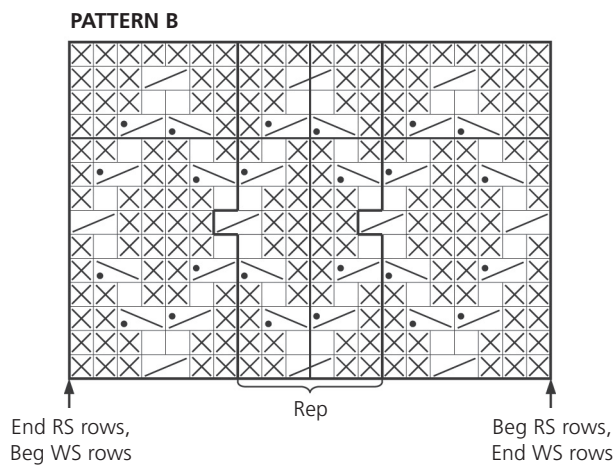
Next rnd, * p 1 st, p2tog; rep from * to last st, end p1 – 7 sts. Gather rem sts on a piece of yarn and fasten securely.

RING FINGER: Slip next 7 sts from palm and next 7 sts from back of hand to dp needles, pick up 2 sts in C O sts of little finger, and C O 2 new sts across opening next to middle finger – 18 sts. Join and, working in the rnd, mark beg of rnd. Cont reverse St st until ring finger measures approx 2¾"/7 cm, or just short of desired length.

Next rnd, * p2tog, p 2 sts; rep from * to last 2 sts, end p2tog – 13 sts.



- = k on RS, p on WS
- ⊗ = p on RS, k on WS
- ↙ = slip 1 st to cn and hold in back, k 1 st, then k st from cn
- ↘ = slip 1 st to cn and hold in back, k 1 st, then p st from cn
- ↗ = slip 1 st to cn and hold in front, p 1 st, then k st from cn



Next rnd, * p 1 st, p2tog; rep from * to last st, end p1 – 9 sts. Gather rem sts on a piece of yarn and fasten securely.

MIDDLE FINGER: Slip next 7 sts from palm and next 7 sts from back of hand to dp needles, pick up 2 sts in C O sts of ring finger, and C O 2 new sts across opening next to index finger – 18 sts. Join and, working in the rnd, mark beg of rnd. Cont reverse St st until middle finger measures approx 3"/7.5 cm, or just short of desired length. Complete middle finger same as ring finger.

INDEX FINGER: Slip rem 16 sts to dp needles and pick up 2 sts in C O sts of middle finger – 18 sts. Join and, working in the rnd, mark beg of rnd. Cont reverse St st until index finger measures approx 2½"/6.5 cm, or just short of desired length. Complete index finger same as ring finger.

THUMB: Remove scrap yarn from thumb opening and slip resulting loops to dp needles – 20 sts. Join and, working in the rnd, mark beg of rnd. Cont reverse St st until thumb measures approx 2⅔"/6 cm, or just short of desired length.

Next rnd, * p2tog, p 2 sts; rep from * to end of rnd – 15 sts.

Next rnd, * p 1 st, p2tog; rep from * to end of rnd – 10 sts. Gather rem sts on a piece of yarn and fasten securely.

FINISHING: With blunt tapestry needle threaded with Color 2, work small crosses over twisted sts on rnds 1, 7 and 13 of Pattern A as shown in photo, stranding yarn across WS so glove does not pucker on RS.

LEFT GLOVE: Work right glove same as left, placing thumb opening after 17 sts.

**HEILO, FALK or LERKE**

SIZES:	Women's	Men's
Color 1:	100	150 gr
Color 2:	50	50 gr

COLORWAYS:

Option	Color Number
I	C1 - cherry red 4018 C2 - white 0010
II	C1 - black 0090 C2 - white 0010

SUGGESTED NEEDLE SIZES: Dp needles in sizes 2.5 mm and 3 mm or 3.5 mm, st markers and holders. **Note:** US and metric needle sizes often do not match exactly and size equivalencies have changed. The original version of this pattern was written to use metric size needles; if in doubt as to whether a given US needle size is the same as a metric size, use the metric size needle. As always, please take the time to check your gauge carefully and change needle sizes as needed to obtain the correct gauge.

GAUGE: 24 sts and 28 rnds over color work pattern using larger needles = 4"/10 cm x 4"/10 cm.

FINISHED MEASUREMENTS:

Hand Circumference: 9⁵/₈" (10¹/₄")/9.5 (10.5) cm

Watch gauge carefully to obtain the correct finished measurements!

RIGHT MITTEN

With smaller dp needles and Color 1, C O 48 (52) sts. Join and, working in the rnd, mark beg of rnd. Work 3¹/₈"/8 cm of k1, p1 rib. Change to larger dp needles. Place side markers at the beg of rnd and after 28 (30) sts for back of hand; rem 20 (22) sts are for palm.

HAND: Set pattern across next rnd in this manner: K 1 st with Color 2, k 1 st with Color 1, beg each size as shown on graph and work Pattern A over the next 25 (27) sts, k 1 st with Color 1, k 1 st with Color 2, k 1 st with Color 1, work Pattern B over the next 17 (19) sts, end k 1 st with Color 1.

Next rnd, k 2 sts with Color 1, work Pattern A over the next 25 (27) sts, k 3 sts with Color 1, work Pattern B over the next 17 (19) sts, end k 1 st with Color 1. Work 4 more rnds as set.

THUMB GUSSET: Work 30 (32) sts as set, place marker for gusset, inc 1 st by lifting horizontal strand between sts and k tbl with Color 2, k 1 st with Color 1, inc 1 st with Color 2, place marker for other side of gusset, then work to end of rnd – 50 (54) sts. Following patterns for back of hand and palm as set, work

Pattern C over thumb gusset and inc 1 st on each side of gusset every third rnd and work inc sts into pattern as shown – 58 (62) sts, with 11 sts between markers for gusset.

Next rnd, work to first gusset marker, slip 11 gusset sts to st holder for thumb opening, C O 11 new sts over thumb opening, then work to end of rnd. Cont working patterns as set, working new sts in Pattern B. Work until hand measures approx 4³/₈" (4³/₄")/11 (12) cm from thumb opening, or 1⁵/₈" (1³/₄")/4 (4.5) cm short of desired length.

SHAPING: Keeping to pattern at sides and over back of hand and palm, * k 1 st, ssk, work to 2 sts before side marker, k2tog; rep from * to end of rnd – 54 (58) sts. Cont dec every rnd 11 (12) more times in this manner, with 2 fewer sts between dec sts each time. Gather rem 10 sts on a piece of yarn and fasten securely.

THUMB: Slip sts from holder back to dp needles, pick up 11 sts along C O edge at top of thumb opening, and 1 st on each side of opening – 24 sts. Join and, working in the rnd, mark beg of rnd and beg rnds at side of thumb. Work Pattern D over outside half of thumb, and Pattern B over inside half of thumb, lining up pattern with palm. Cont as set until thumb measures 2¹/₈" (2³/₈")/5.5 (6) cm, or approx ³/₈"/1 cm short of desired length.

Next rnd, keeping to pattern at sides and front and back of thumb, * k 1 st, ssk, work 7 sts, k2tog; rep from * once more – 20 sts. Next rnd, * k 1 st, ssk, work 5 sts, k2tog; rep from * once more – 16 sts. Cont dec every rnd twice more, with 2 fewer sts between dec sts each time. Gather rem 8 sts on a piece of yarn and fasten securely.

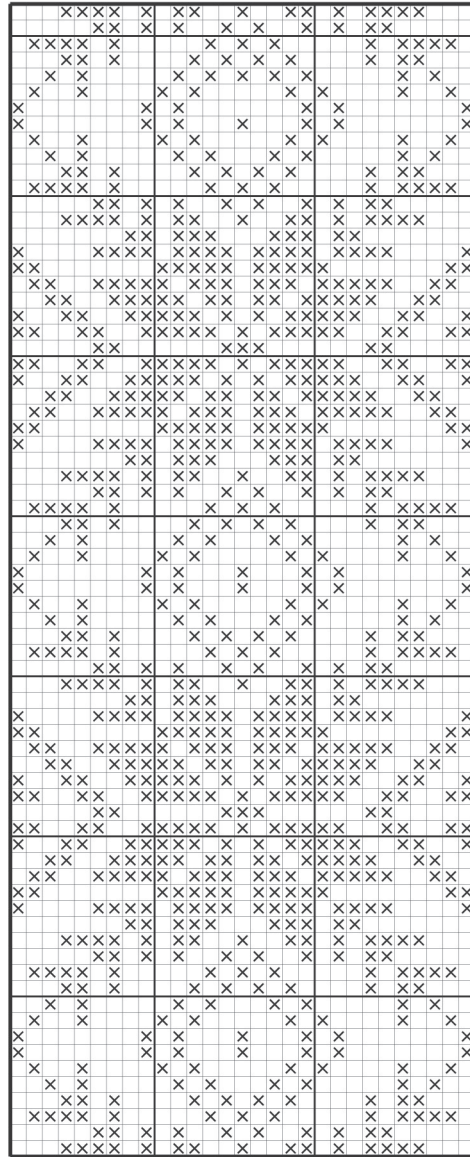
LEFT MITTEN: C O sts and work cuff same as right mitten. Place side markers at the beg of rnd and after 20 (22) sts for palm; rem 28 (30) sts are for back of hand.

HAND: Set pattern across next rnd in this manner: K 1 st with Color 1, work Pattern B over the next 17 (19) sts, k 1 st with Color 1, k 1 st with Color 2, k 1 st with Color 1, beg each size as shown on graph and work Pattern A over the next 25 (27) sts, end k 1 st with Color 1, k 1 st with Color 2.

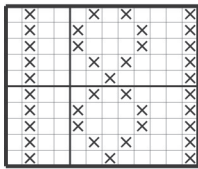
Next rnd, k 1 st with Color 1, work Pattern B over the next 17 (19) sts, k 3 sts with Color 1, work Pattern A over the next 25 (27) sts, end k 2 sts with Color 1. Work 4 more rnds as set.

THUMB GUSSET: Work 17 (19) sts, place marker for gusset, inc 1 st by lifting horizontal strand between sts and k tbl with Color 2, k 1 st with Color 1, inc 1 st with Color 2, place marker for other side of gusset, then work to end of rnd – 50 (54) sts. Cont inc for gusset, then complete left mitten same as right.

PATTERN A



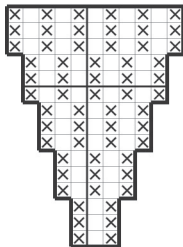
PATTERN D



PATTERN B



PATTERN C



← Beg Women's

← Beg Men's

Men's ↑ Women's
End here

Women's ↑ Men's
Beg here

- = Color 1 = cherry red 4018/black 0090
- ⊗ = Color 2 = white 0010/white 0010



HEILO, FALK or LERKE

SIZES:	Women's	Men's
Color 1: white 0010	100	150 gr
Color 2: grey heather 0007	50	50 gr

SUGGESTED NEEDLE SIZES: Dp needles in sizes 2.5 mm and 3mm or 3.5 mm, st markers and holders. **Note:** US and metric needle sizes often do not match exactly and size equivalencies have changed. The original version of this pattern was written to use metric size needles; if in doubt as to whether a given US needle size is the same as a metric size, use the metric size needle. As always, please take the time to check your gauge carefully and change needle sizes as needed to obtain the correct gauge.

GAUGE: 24 sts and 28 rnds over colorwork pattern using larger needles = 4"/10 cm x 4"/10 cm.

FINISHED MEASUREMENTS:

Hand Circumference: 10" (10⁵/₈")/25.5 (27) cm

Watch gauge carefully to obtain the correct finished measurements!

RIGHT MITTEN

With smaller dp needles and Color 1, C O 54 (56) sts. Join and, working in the rnd, mark beg of rnd. Work 1"/2.5 cm of k1, p1 rib.

Change to Color 2 and knit 1 rnd, then work 1 rnd of rib. Change to Color 1 and knit 1 rnd, then work 1 rnd of rib. Change to Color 2 again and knit 1 rnd, then work 1 rnd of rib. Change back to Color 1 and knit 1 rnd. Cont rib until cuff measures 2³/₄"/7 cm.

Change to larger dp needles. Beg Hand Pattern for appropriate size and, AT THE SAME TIME, inc as shown for thumb gusset every fourth rnd once, then every third rnd 2 (3) times, working inc sts into pattern as shown on graph – 60 (64) sts. Work through rnd 10 (13).

THUMB OPENING: Next rnd, work 33 (35) sts, work next 9 (11) sts and slip them to st holder for thumb opening, then work to end of rnd. Next rnd, C O 9 (11) new sts over opening, then cont working in the rnd through rnd 44 (48) of graph.

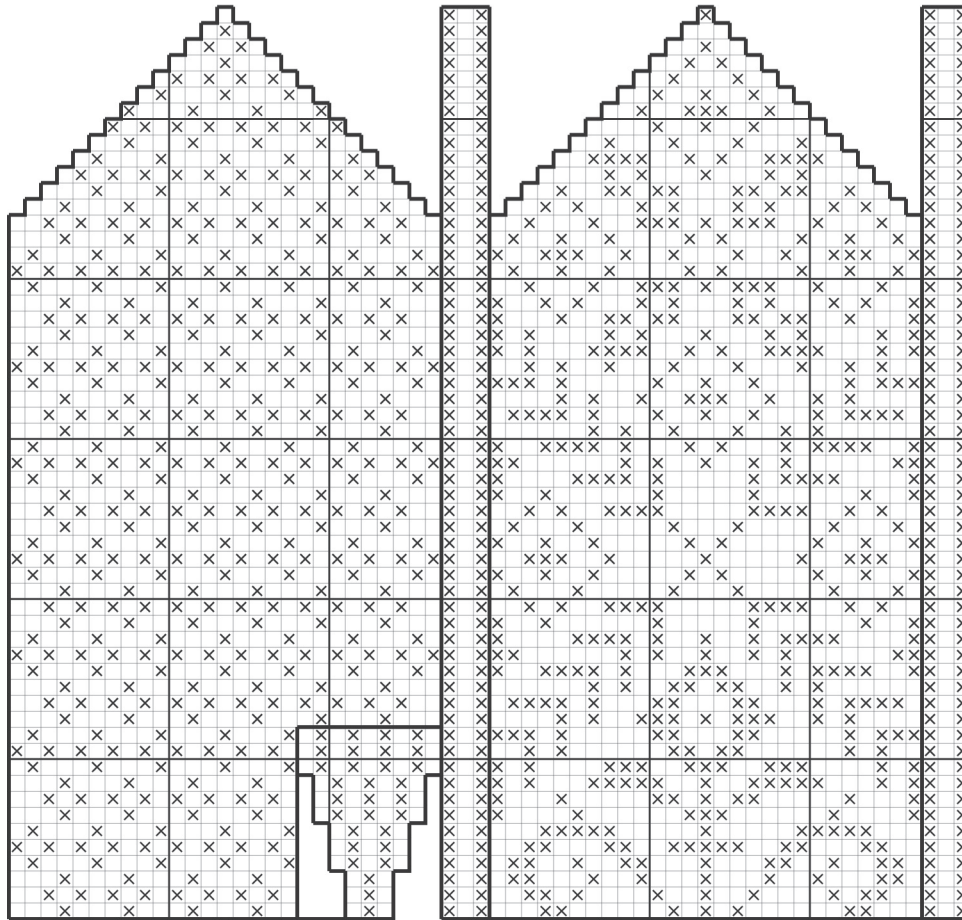
TOP SHAPING: Keeping to pattern, slip 1 st, work 1 st, ssk, work 25 (27) sts, k2tog, work 1 st, ssk, work to last st, k tog last st of rnd with first st of rnd – 56 (60) sts. Cont dec every rnd 12 (13) more times in this manner, with 2 fewer sts between dec sts each time. Gather rem 8 sts on a piece of yarn and fasten securely.

THUMB: Slip sts from holder to larger dp needles and pick up 10 (12) sts along top of opening, and 1 st on each side of opening – 21 (25) sts. Join and, working in the rnd, mark beg of rnd, beg rnds at side of hand. Work Thumb Pattern and dec as shown on graph. Gather rem 4 (2) sts on a piece of yarn and fasten securely.

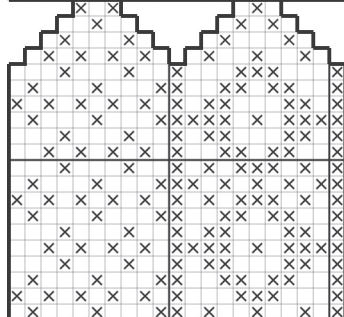
LEFT MITTEN

Work left mitten same as right, placing thumb gusset after 51 (53) sts.

WOMEN'S HAND PATTERN

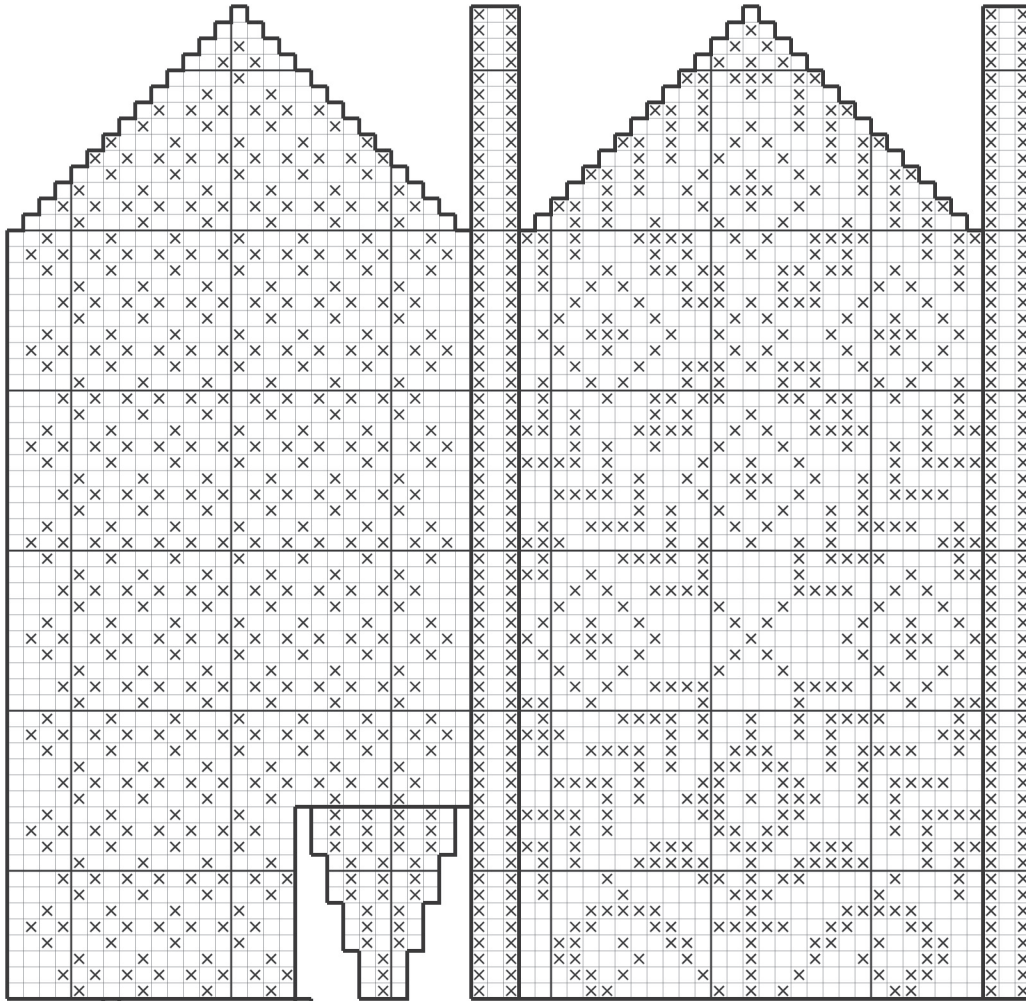


THUMB PATTERN

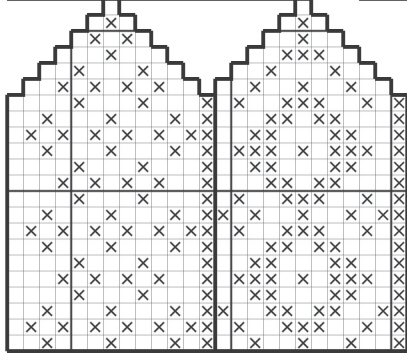


□ = Color 1 = white 0010
⊗ = Color 2 = grey hea 0007

MEN'S HAND PATTERN



THUMB PATTERN



□ = Color 1 = white 0010
x = Color 2 = grey hea 0007



HEILO, FALK or LERKE

SIZES:	Women's	Men's
Color 1: white 0010	100	150 gr
Color 2: black 0090	50	50 gr

SUGGESTED NEEDLE SIZES: Dp needles in sizes 2.5 mm and 3 mm, st markers and st holders. **Note:** US and metric needle sizes often do not match exactly and size equivalencies have changed. The original version of this pattern was written to use metric size needles; if in doubt as to whether a given US needle size is the same as a metric size, use the metric size needle. As always, please take the time to check your gauge carefully and change needle sizes as needed to obtain the correct gauge.

GAUGE: 24 sts and 28 rnds over colorwork pattern using larger needles = 4"/10 cm x 4"/10 cm.

FINISHED MEASUREMENTS:

Hand Circumference: 10" (10⁵/₈")/25.5 (27) cm

Watch gauge carefully to obtain the correct finished measurements!

RIGHT MITTEN

Using smaller dp needles and Color 1, C O 50 (54) sts. Join and, working in the rnd, mark beg of rnd. Work 2³/₄" (3¹/₈")/7 (8) cm of k1, p1 rib, and inc 1 (0) st on last rnd – 51 (54) sts. Change to larger dp needles. Work Mitten Pattern, beg each size as shown on graph and working side sts for both sizes. AT THE SAME TIME, inc for thumb gusset on second (third) rnd, then every third rnd 4 more times, working inc sts into pattern (**Note:** On last inc rnd, inc only 1 st for Women's Size as shown) – 60 (64) sts.

THUMB OPENING: Next rnd, slip first 11 (12) sts to st holder for thumb opening, C O 11 (12) new sts over opening, then work to end of rnd – 60 (64) sts. Work through rnd 44 (45) of of graph.

TOP SHAPING: Next rnd, slip 1 st, work 25 (27) sts, k2tog, work 1 st, ssk, work to last 4 sts, k2tog, work 1 st, last st and first st of rnd tog as ssk – 56 (60) sts. Cont dec every rnd 12 (13) more times in this manner, with 2 fewer sts between dec sts each time. Gather rem 8 sts on a piece of yarn and fasten securely.

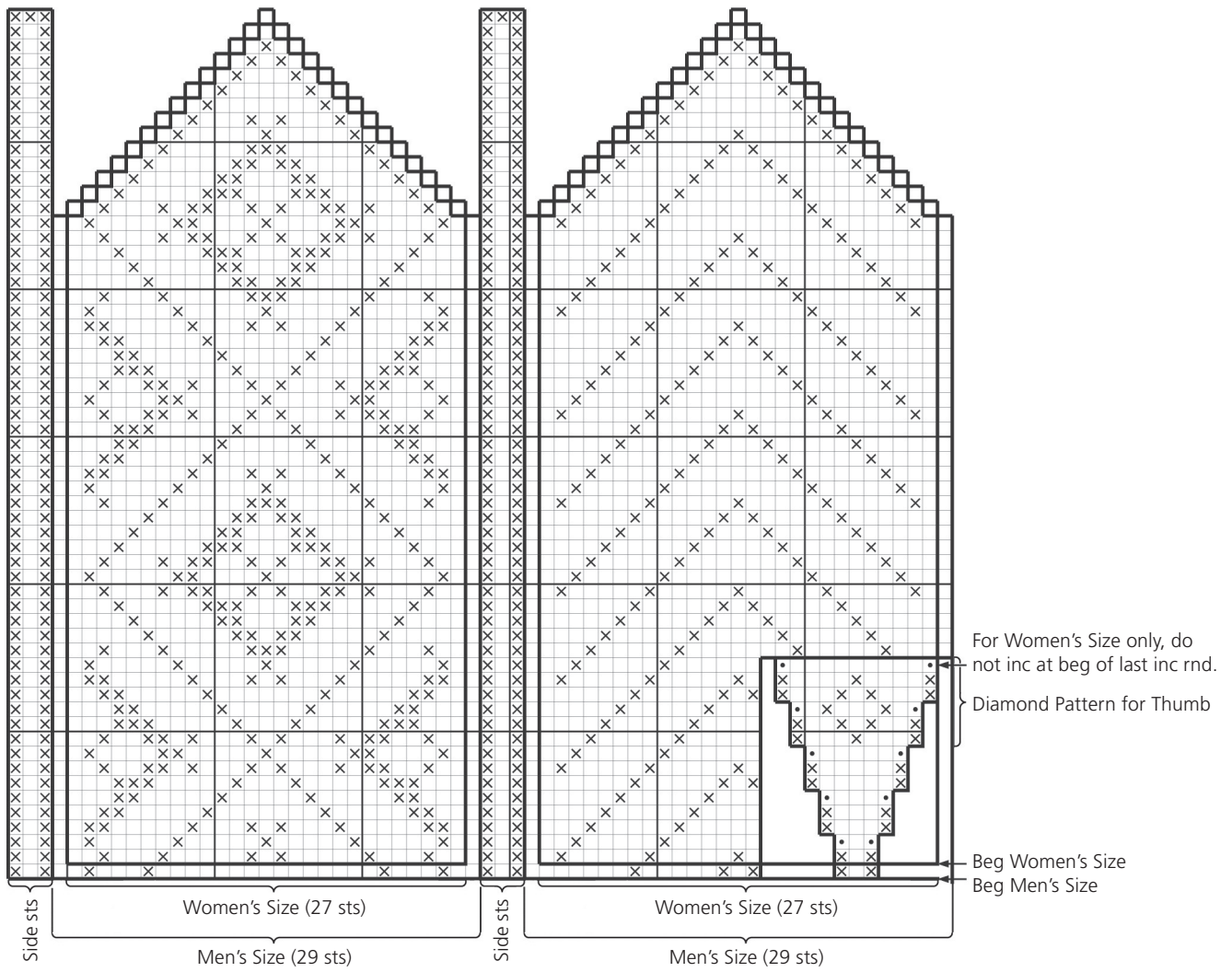
THUMB: Slip sts from holder to larger dp needles, pick up and k 11 sts along top of opening, and 1 st on each side of opening – 24 (25) sts. Join and, working in the rnd, mark beg of rnd. Following Diamond Pattern as shown on graph, dec 0 (1) st on first rnd – 24 sts. Cont stripes up each side of thumb and work 3 more diamonds on both front and back of thumb as shown in

photo. AT THE SAME TIME, when thumb measures 2¹/₈" (2³/₈")/ 5.5 (6) cm, or approx ³/₈"/1 cm short of desired length, shape top of thumb same as hand. Gather rem 8 sts on a piece of yarn and fasten securely.

LEFT MITTEN

Make left mitten same as right, placing thumb gusset after 15 (16) sts.

MITTEN PATTERN



- = Color 1 = white 0010
- ⊗ = Color 2 = black 0090
- = Color 2 inc = knit into front and back of st to inc 1 st



LEFT MITTEN

Work left mitten same as right, placing thumb gusset after 51 (53) sts.

HEILO, FALK or LERKE

SIZES:	Women's	Men's
Color 1: white 0010	100	100 gr
Color 2: black 0090	100	100 gr

SUGGESTED NEEDLE SIZES: Dp needles in sizes 2.5 mm and 3 mm, st markers and st holders. **Note:** US and metric needle sizes often do not match exactly and size equivalencies have changed. The original version of this pattern was written to use metric size needles; if in doubt as to whether a given US needle size is the same as a metric size, use the metric size needle. As always, please take the time to check your gauge carefully and change needle sizes as needed to obtain the correct gauge.

GAUGE: 24 sts and 28 rnds over colorwork pattern using larger needles = 4"/10 cm x 4"/10 cm.

FINISHED MEASUREMENTS:

Hand Circumference: 10" (10⁵/₈")/25.5 (27) cm

Watch gauge carefully to obtain the correct finished measurements!

RIGHT MITTEN

With smaller dp needles and Color 1, C O 52 (56) sts. Join and, working in the rnd, mark beg of rnd. Work 2³/₄" (3¹/₈")/7 (8) cm of k1, p1 rib and inc 2 (0) sts evenly spaced across last rnd – 54 (56) sts. Change to larger dp needles.

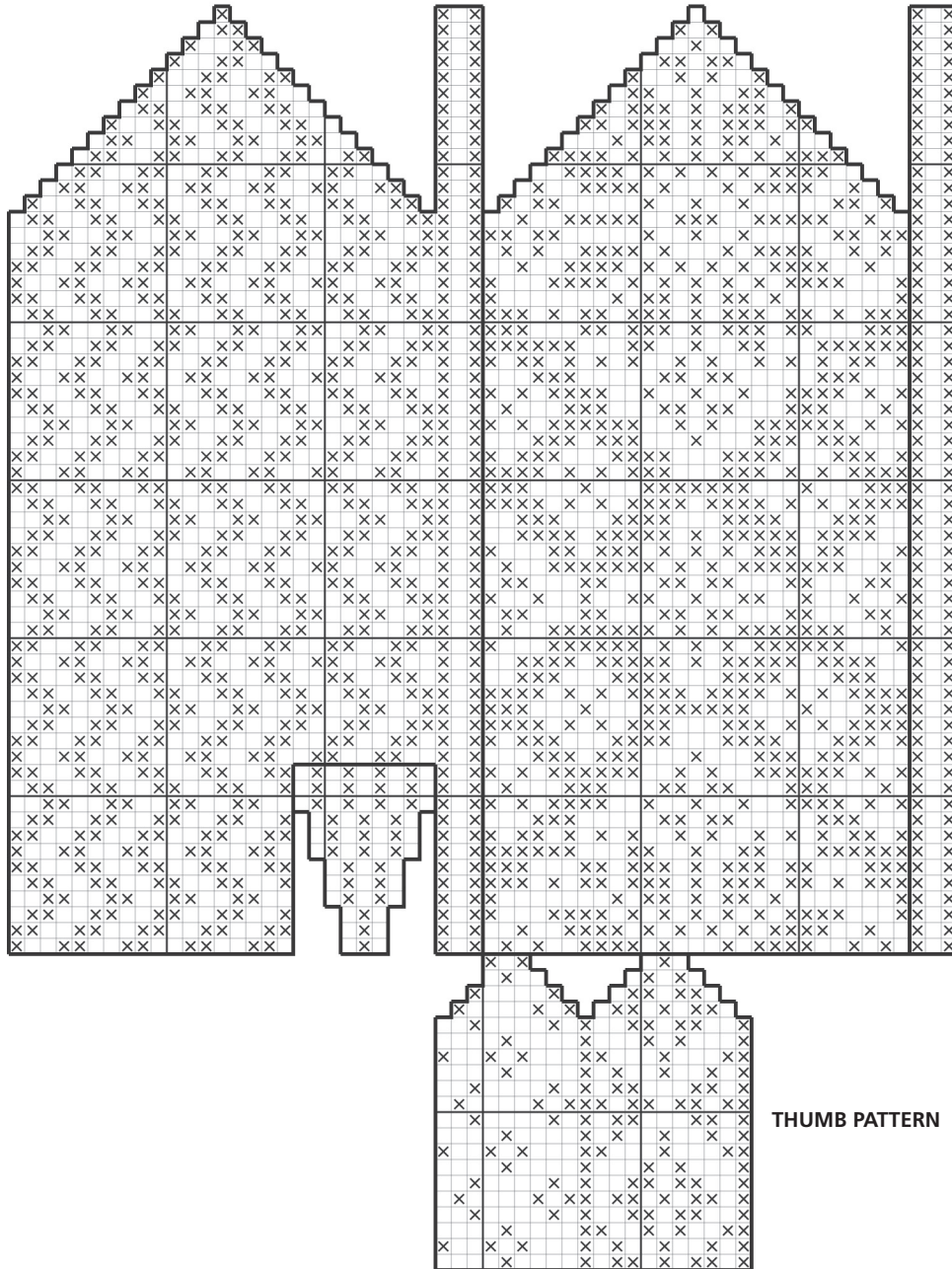
Beg Hand Pattern for appropriate size and, AT THE SAME TIME, inc for thumb gusset every fourth rnd 3 (4) times, working inc sts into pattern as shown – 60 (64) sts. Work through rnd 10 (12).

THUMB OPENING: Next rnd, work 33 (35) sts, work next 9 (11) sts and slip to st holder for thumb opening, then work to end of rnd. Next rnd, C O 9 (11) new sts over opening, then cont working in the rnd through rnd 47 (48) of graph.

TOP SHAPING: Next rnd, slip 1 st, work 1 st, ssk, work 25 (27) sts, k2tog, work 1 st, ssk, work to last st, k tog last st rnd and first st of rnd – 56 (60) sts. Cont dec every rnd 12 (13) more times in this manner, with 2 fewer sts between dec sts each time. Gather rem 8 sts on a piece of yarn and fasten securely.

THUMB: Sl sts from holder to larger dp needles, pick up 10 (12) sts along top of opening, and 1 st on each side of opening – 21 (25) sts. Join and, working in the rnd, mark beg of rnd, beg rnds at side of hand. Work Thumb Pattern and dec as shown on graph. Gather rem 4 (2) sts on a piece of yarn and fasten securely.

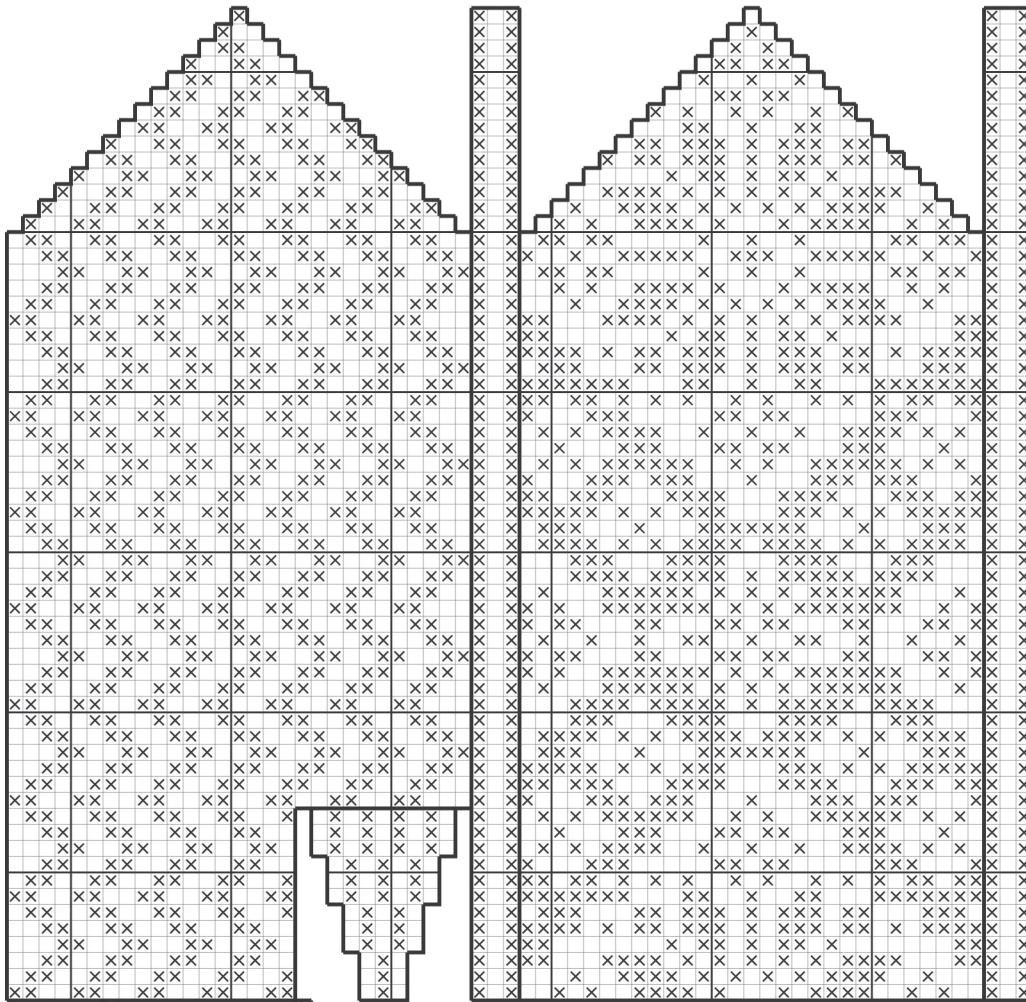
WOMEN'S HAND PATTERN



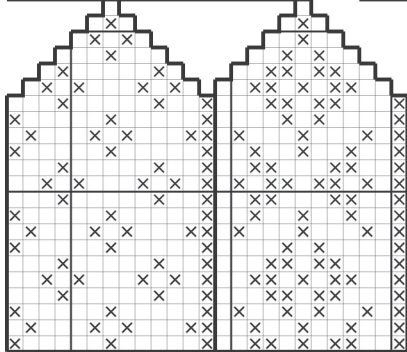
THUMB PATTERN

□ = Color 1 = white 0010
⊗ = Color 2 = black 0090

MEN'S HAND PATTERN



THUMB PATTERN

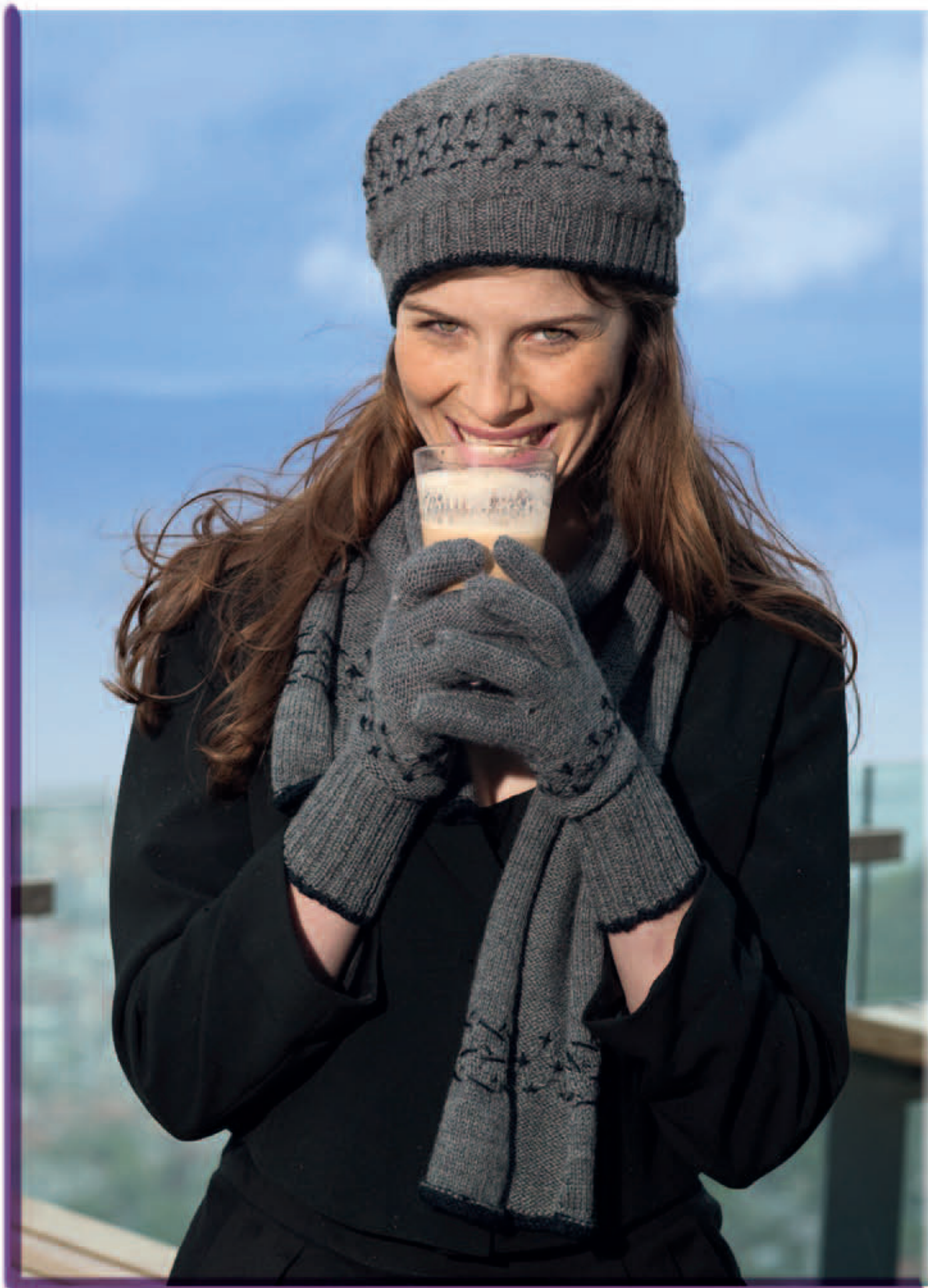


□ = Color 1 = white 0010
x = Color 2 = black 0090



• DALETTA • design: Daledesign





• DALETTA • design: Trine Bertelsen

