

DALE

Garn



The RAULAND cardigan

The RAULAND cardigan

HEILO 3104

RAULAND WOMAN'S CARDIGAN

SIZES:	S	M	L
--------	---	---	---

MATERIALS: Heilo

Main Color:	500	550	600 gr
Contrast Color 1:	200	200	250 gr
Contrast Color 2:	50	50	50 gr
Contrast Color 3:	50	50	50 gr
Contrast Color 4:	50	50	50 gr
Contrast Color 5:	50	50	50 gr

COLOR SUGGESTIONS:

	I	II
Main Color:	tomato red 3928	norwegian blue 5744
Contrast Color 1:	black 0090	navy 5563
Contrast Color 2:	teal green 7562	jade 7336
Contrast Color 3:	goldenrod 2427	burgundy 4545
Contrast Color 4:	violet 5236	fuchsia 4716
Contrast Color 5:	off-white 0017	goldenrod 2427

SUGGESTED NEEDLE SIZE:

Cir and dp needles in US sizes 2 (2 1/2mm) and 3 (3mm) or 4 (3 1/2mm). Use size to obtain correct gauge. Crochet hook in US size B/1 (2mm).

GAUGE:

24 sts and 28 rds of pattern = 4" (10cm).

FINISHED MEASUREMENTS:

Chest:			
40 1/2" (103cm)	43" (109cm)	44 1/2" (113cm)	
Length:			
22" (56cm)	22 3/4" (58cm)	23 1/2" (60cm)	
Sleeve Length:			
14 1/2" (37cm)	15" (38cm)	16" (41cm)	

BODY: Using MC and smaller cir needle, C O 219 - 227 - 235 sts. Work in a rd. Work 13 rds st st. Last 4 sts of rd are cutting sts, to be worked in MC all rds and not included in graphs or st counts. P 1 rd = fold line. K 1 rd and change to larger cir needle. Place a marker 54 - 56 - 58 sts to each side of the 4 cutting sts = side markers. Work Pattern I, beg at center front as shown on graph, stop at side marker and beg again as shown on graph. At the same time, inc 1 st before and after each side marker, always leaving 2 sts between inc sts, approximately every 3/4" (2cm) 8 - 10 - 11 times (= 4 sts inc each time). Work the inc sts into pattern gradually. When Pattern I is complete, work Main Pattern over rem of body. Work until body measures 10 1/4" (26cm) - 11" (28cm) - 11 3/4" (30cm) from P rd.

ARMHOLE SHAPING: Cont to work Main Pattern. C OFF last 5 sts of next rd and first 5 sts of following rd (= 5 sts C OFF on each side of side marker), totaling 10 sts C OFF at one time. On the same rd, C OFF 5 sts on each side of other side marker. On next rd, C O 4 new sts over each armhole = cutting sts. Cont to shape armholes by dec 1 st on each side of each armhole every rd 8 times, and every other rd 3 times. Work until body measures 19 1/4" (49cm) - 20" (51cm) - 20 3/4" (53cm) from P rd.

FRONT NECK SHAPING: C OFF the 4 cutting sts at center front. Work back and forth and cont to C OFF, 10 - 10 - 11 sts at beg of first 2 Rs, 2 sts at beg of next 4 Rs and 1 st at beg of next 6 Rs. Work until body measures 20 3/4" (53cm) - 21 1/2" (55cm) - 22 1/4" (57cm) from P rd. C OFF the 4 cutting sts over each armhole and work back and front separately.

BACK, BACK NECK AND SHOULDER SHAPING: C OFF 25 - 25 - 27 center sts for back neck opening. Work each side separately and cont to C OFF at neck opening every other R, 2 sts 1 time and 1 st 2 times. But at the same time, move sts from outside edge of shoulder to holder every other R, 9 - 11 - 11 sts 1 time and 10 - 11 - 12 sts 2 times. Work 1 R over all shoulder sts (including sts from holder). C OFF. Complete other side to match, reversing shaping.

FRONT, FRONT NECK AND SHOULDER SHAPING: Complete front neck opening and shape shoulders as for back.

SLEEVES: Using MC and smaller dp needles, C O 49 - 51 - 53 sts. Work in a rd. Work 13 rds st st, P 1 rd = fold line. K 1 rd and change to larger dp needles. Work Pattern I, center st on graph = center st of sleeve. At the same time, inc 1 st at beg and end of rd, always leaving 2 sts between inc sts, approximately every 1/2" (1cm) 35 - 36 - 37 times. When Pattern I is complete, work Main Pattern. Work until sleeve measures 14 1/2" (37cm) - 15" (38cm) - 16" (41cm).

SLEEVE SHAPING: C OFF the last 5 sts of next rd and first 5 sts of following rd. Work back and

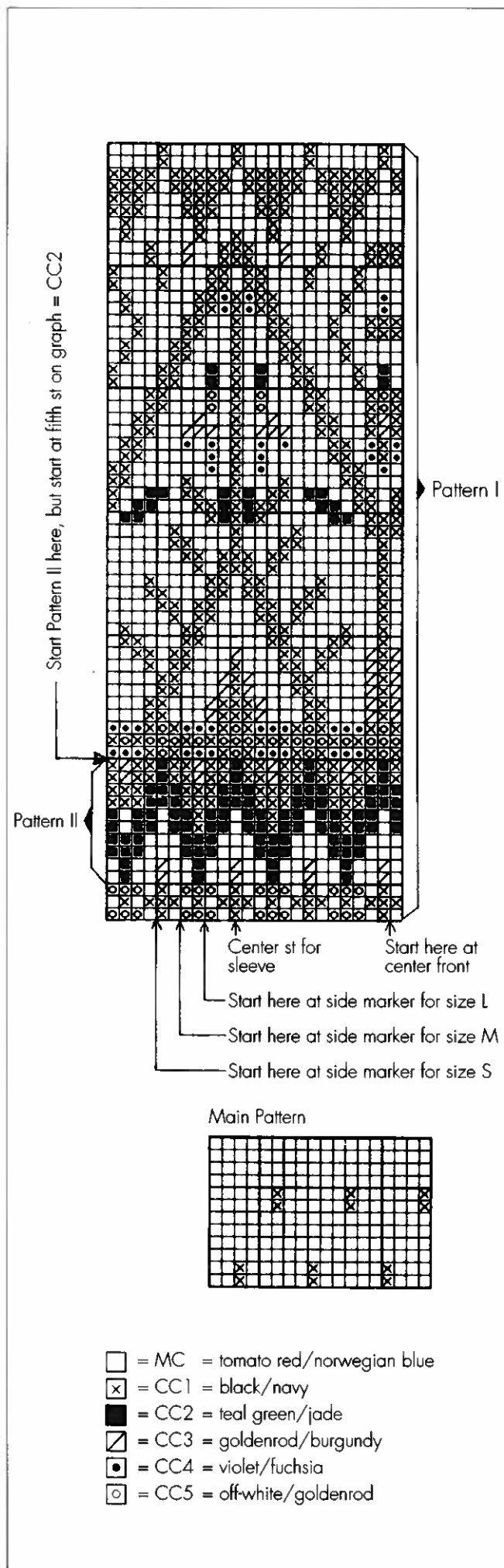
forth and cont to C OFF, 3 sts at beg of next 10 Rs and 2 sts at beg of next 20 Rs. C OFF rem sts.

FINISHING: Steam pieces lightly from WS. Sew seams with yarn, using back st and 1 st seam allowance. Sew 2 machine seams along sides of the 4 cutting sts at center front and the 4 cutting sts at each armhole. Cut between pairs of machine seams. Sew shoulders tog. Sew sleeves in and finish cut edges on WS of body with buttonhole st or with a R of single crochet. Fold body and sleeves at lower P rd and sew neatly to WS.

LEFT BUTTON BAND: Using MC, crochet hook and smaller cir needle, pick up 24 sts per 4" (10cm) along left front opening, from inside (body side) of machine seams. Hold crochet hook as a knitting needle and knit sts up from RS of work. Push sts up shank of hook and onto needle. Work st st for 1 1/4" (3cm), P 1 R on RS, work st st again for 1 1/4" (3cm). C OFF.

RIGHT BUTTON BAND: Work as for left band, but work 7 buttonholes, each over 3 sts, after 5/8" (1 1/2cm) and again after 1 3/4" (4 1/2cm). Place bottom buttonhole 1/2" (1cm) from bottom of band and top buttonhole 1/2" (1cm) from top of band. Space rem buttonholes evenly. Fold band at P R and sew loosely to WS. Sew around buttonholes with buttonhole st and sew on buttons.

NECKBAND: Using MC, crochet hook and larger cir needle, pick up 109 - 109 - 115 sts around neckband, including tops of button bands. Pick up as for button bands. Work back and forth. Work Pattern II upside down, starting from tenth R, and fifth st on graph = CC2. Using MC, P 1 R on RS, then work 11 Rs st st for facing. C OFF. Fold neckband at P R and sew loosely to WS. Sew ends closed.

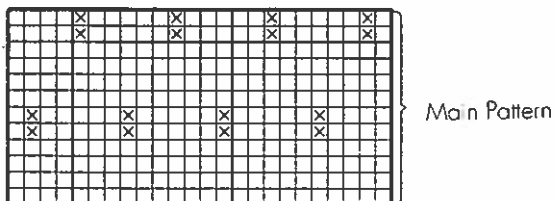
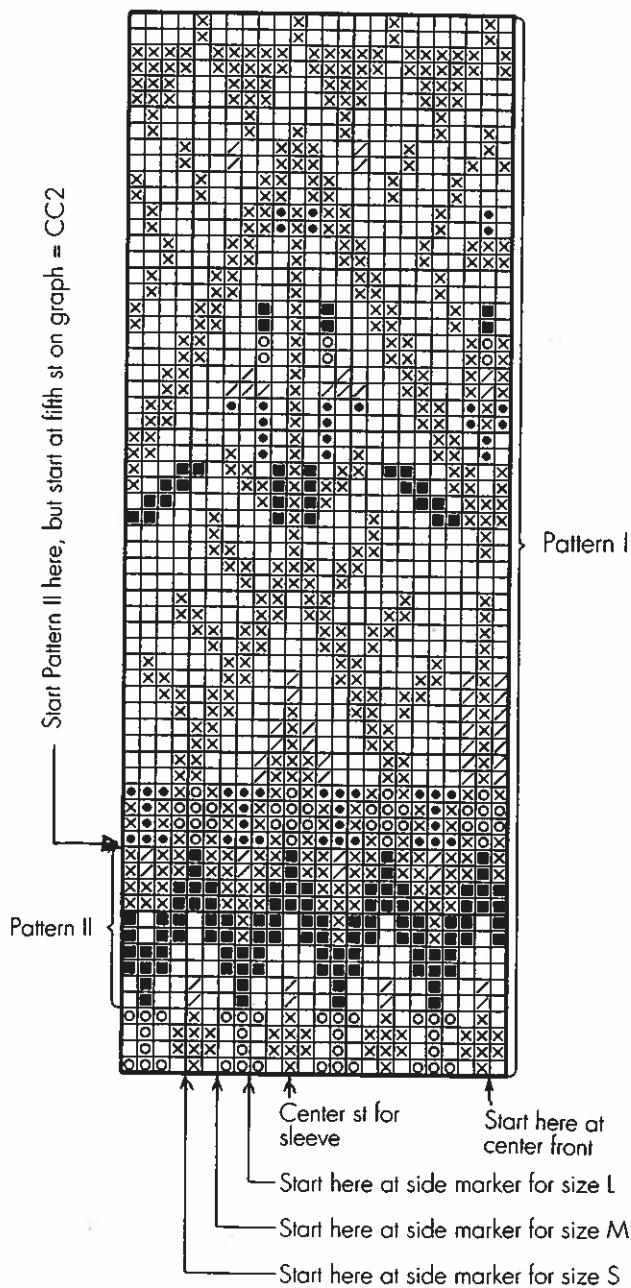


- = MC = tomato red/norwegian blue
- ⊗ = CC1 = black/navy
- = CC2 = teal green/jade
- ▧ = CC3 = goldenrod/burgundy
- = CC4 = violet/fuchsia
- ⊙ = CC5 = off-white/goldenrod

Rauland Correction - 6/94

Correction 3/95:

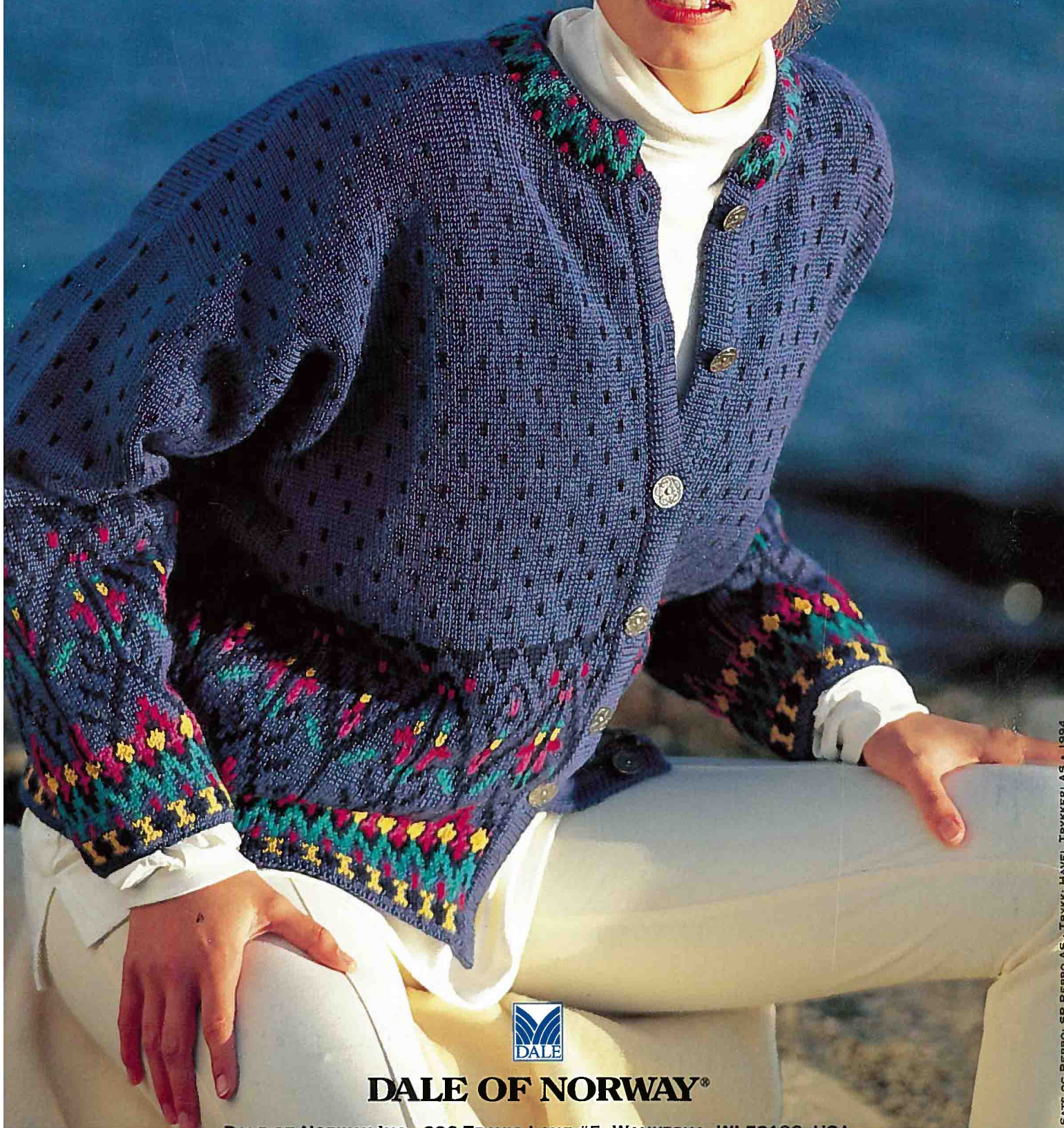
Sleeves: Work increases every third rd (1 cm) (instead of every 1/2") 35 - 36 - 37 times



- = MC = tomato red/norwegian blue
- × = CC1 = black/navy
- = CC2 = teal green/jade
- ◻ = CC3 = goldenrod/burgundy
- = CC4 = violet/fuchsia
- ◻ = CC5 = off-white/goldenrod

RAULAND

HEILO - DESIGN: IRENE HAUGLAND ZAHL



DALE OF NORWAY®

SATS OG REPRO: SP REPRO AS · TRYKK: HAVEL TRYKKERI AS · 1994

DALE OF NORWAY INC. 206 TRUMP LANE #5 WATKINS, WI 53402 USA