

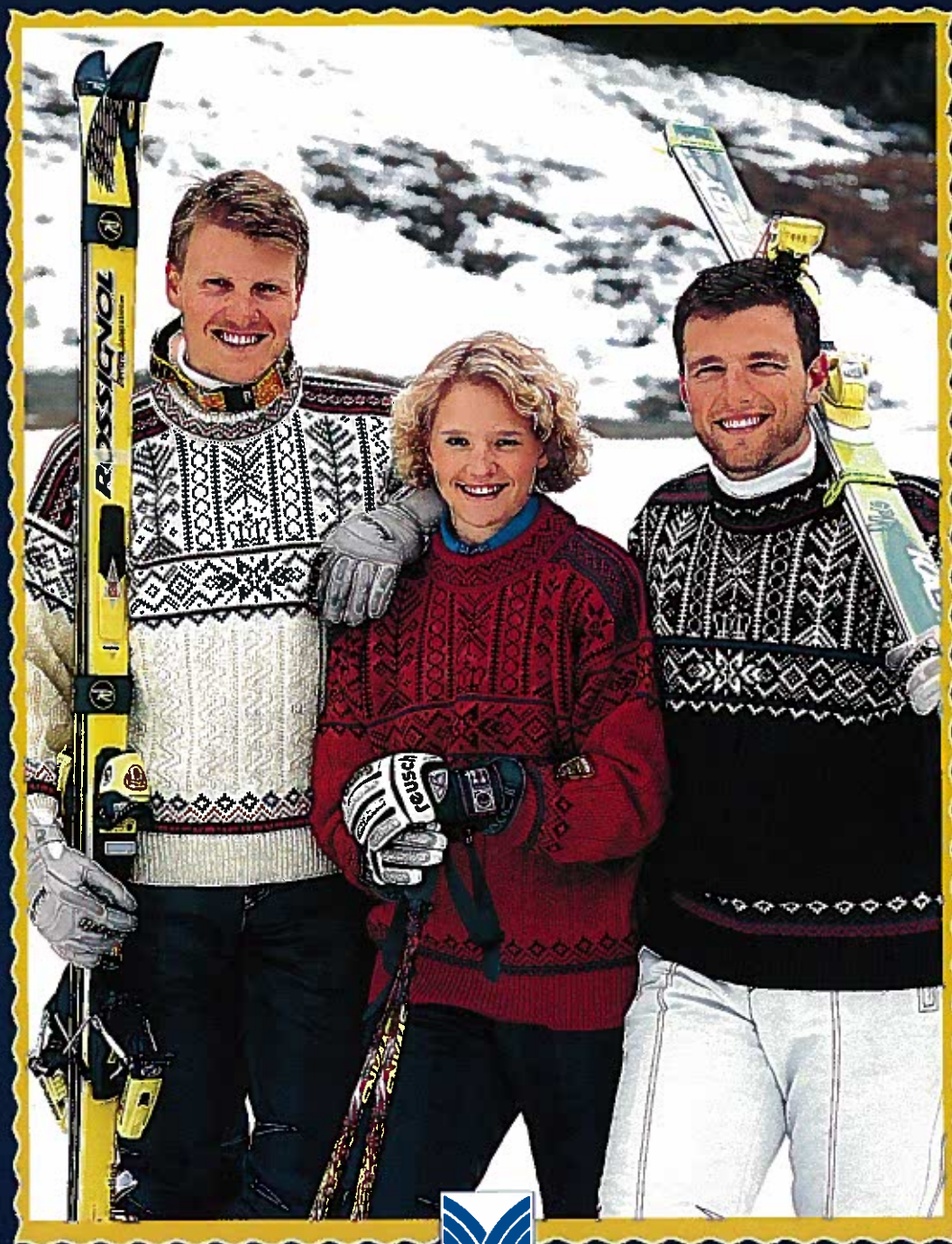
TRONDHEIM

VM-GENSEREN



1997

DALE ER OFFISIELL UTSTYRSLEVERANDØR TIL
DET NORSKE SKILANDSLAGET UNDER VM I TRONDHEIM 1997



DALEGARN



Vi ønsker alpinistene våre lykke til skisesongen 1997.

Bak fra Venstre: Harald Chr. Strand Nilsen, Aile Skårdal, Tom Stiansen, Finn Chr. Jagge, Gro Kvinlog, Ingeborg H. Marken

TRONDHEIM VM-GENSEREN 1997

DALE ER OFFISIELL UTSTYRS-
LEVERANDØR TIL DET
NORSKE SKILANDSLAGET UNDER
VM I TRONDHEIM 1997



Husk å be om Trondheim-merket!
Merket får du kun når du kjøper originalgarnet
Heilo eller Falk.

HEILO

Klassikeren fra Dale i 100% ren ny ull har vært produsert i over 50 år, og er det ledende kofte- og sportsgarn på markedet. Plaggene blir svært slitesterke og får en jevn, fin overflate, fordi vi bruker den beste ullen fra de norske sauene, samt at garnet går gjennom en grundig karding-, strekking- og kjempeprosess.

FALK

Et flott garn fra Dale i 100% ren ny ull som kan maskinvaskes. Det er mykt og behagelig mot huden, og plaggene får en god spenst.



REN NY ULL



NORGES SKIFORBUND

VM-genseren skal strikkes i originalgarnet Heilo, eller i garnkvaliteten Falk fra Dalegarn



DALE OF NORWAY®



Dale of Norway, the official outfitter to the Norwegian National Ski Team, introduces the Trondheim sweater for the 1997 World Championship Nordic Ski Events in Trondheim, Norway. The designer, Jorunn Heggdal, of CLOUD NINE, deserves high praise for her creation of the Trondheim design.

Ancient double woven textiles from Trondelag, the country surrounding Trondheim, provided inspiration for this exquisite pattern. This particular weaving technique has a long tradition in Norway.

The design features motifs from ancient, established patterns from the "Primstav" and the runes. The "Primstav" were old calendars or almanacs, carved out of pieces of wood, often depicting certain holy days, but also with a strong element of ancient, pre-Christian symbolism. The runes were secretive symbols with magical charms from times long gone, containing distinct references to history, but at the same time a message for today.

The motifs are the tree of life, the crown and the eight leaf rose. The tree of life symbolizes justice, knowledge and wisdom. The crown is the symbol of kings. (Trondheim is the ancient royal city where kings of Norway were crowned 1000 years ago and still are today.) The crown motif strengthens the connection to Trondheim's millennial celebration which also takes place in 1997.

The eight leaf rose motif is interpreted as a sun and its placement in the middle of the design forms a focus point. We also see the eight leaf rose used in a context that may suggest an attractive flower.

An elegant and colorful border, much like a woven ribbon typical of many Norwegian folk costumes, completes the design at the shoulder. On the back side the words "VM Trondheim 1997," subtly tie the design directly to the World Championship Event.

Our Patterns are designed exclusively for Dale yarns.

Heilo: Classic Norwegian 100% pure new wool.

Care instructions: Hand wash in cold or warm water. Dry flat (please do not dry in the dryer).

Falk: 100% pure superwash sport weight wool.

Care instructions: Machine wash in warm water. Use mild/neutral detergent. Dry flat (please do not dry in the dryer).



PURE NEW WOOL

Dale Of Norway, Inc.
N16 W23390 Stoneridge Drive, Suite A
Waukesha, WI 53188

3rd Printing

TRONDHEIM 1997



WOMAN'S/MAN'S PULLOVER

SIZES: XS S M L XL

MATERIALS: Heilo or Falk

Main Color:	600	650	700	750	800 gr
Contrast Color 1:	50	50	50	50	50 gr
Contrast Color 2:	50	50	50	50	50 gr
Contrast Color 3:	50	50	50	50	50 gr
Contrast Color 4:	100	100	150	150	150 gr

COLOR SUGGESTIONS:

Option	Main Color	Contrast Color
A	natural 0020	CC1 - charcoal 0083 CC2 - deep olive 9472 CC3 - flame red 3918 CC4 - charcoal gray 0007
B	red heather 4028	CC1 - dark plum 4845 CC2 - deep blue 5655 CC3 - deep teal 7382 CC4 - black 0090
C	navy 5563	CC1 - grape 5264 CC2 - china blue 0688 CC3 - warm burgundy 4246 CC4 - sand gray 0004
E	charcoal 0083	CC1 - china blue 0688 CC2 - copper 3046 CC3 - charcoal gray 0007 CC4 - sand gray 0004
G	deep teal 7382	CC1 - copper 3046 CC2 - dark taupe 2671 CC3 - red heather 4028 CC4 - light sheep heather 2931
F	black 0090	CC1 - warm burgundy 4246 CC2 - midnight blue 5962 CC3 - deep olive 9472 CC4 - natural 0020

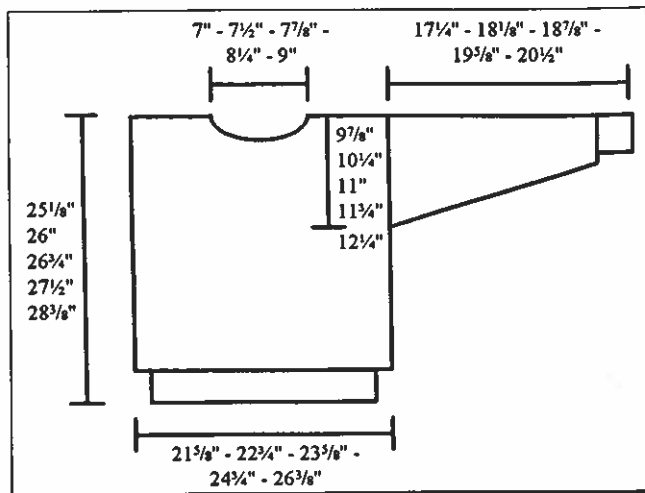
NOTE: All colors are available in both Heilo and Falk, except CC4 in Colorway G. Substitute Falk natural 0020 for Heilo light sheep heather 2931.

SUGGESTED NEEDLE SIZES:

Cir and dp needles in US sizes 2 (2½mm) and 3 (3mm) or 4 (3½mm). Use size to obtain correct gauge.

GAUGE: 24 sts and 30 rds of plain st st or 28 rds of pattern = 4" (10cm)

FINISHED MEASUREMENTS:



WATCH GAUGE CAREFULLY TO OBTAIN CORRECT FINISHED MEASUREMENTS!

BODY: Using MC and smaller cir needle, C O 234 - 242 - 252 - 264 - 280 sts. Join and work in a rd. Work K 1, P 1 ribbing for 2¾" (6cm) and inc on last rd 32 - 36 - 38 - 38 - 42 sts evenly spaced. Change to larger cir needle. K 1 rd and place a marker at beg and middle of rd = side markers. Work Pattern I, beg as shown on graph, work up to and including center st, work mirror image to next side marker, then beg again as shown on graph in order to make pattern uniform on front and back, work up to and including center st, and work mirror image again to next side marker to complete rd. When Pattern I is complete, work Main Pattern. **NOTE:** P st curves in Main Pattern should go in the same direction all the time; don't change direction of curves when mirror image is worked. Work until body measures 11" (28cm) - 11¼" (30cm) - 12½" (32cm) - 13½" (34cm) - 14½" (36cm), then work Pattern II, followed by Pattern III. When Pattern III is complete, body should measure 22¾" (57cm) - 23¼" (59cm) - 24" (61cm) - 24¾" (63cm) - 25½" (65cm), then beg front neck opening.

FRONT NECK OPENING: C OFF 17 - 19 - 19 - 19 - 21 center sts of front for front neck opening. Work back and forth, Rs beg at neck opening. Work Pattern IV. **NOTE:** The text "VM Trondheim 1997" is only worked on back; on front, work pattern as it appears on sides of body, with no text. ("VM" is short for Verdens Mesterskap, meaning World Championship, held in Trondheim, Norway in 1997 for the sport of skiing.) At the same time, cont to C OFF, 3 - 3 - 4 - 5 - 5 sts at beg of next 2 Rs, then 3 sts at beg of next 2 Rs, then 2 sts at beg of next 4 - 4 - 4 - 4 - 6 Rs, then 1 st at beg of next 6 - 6 - 8 - 8 - 6 Rs, but when there are 4 Rs of Pattern IV rem, beg back neck opening.

BACK NECK OPENING: C OFF 39 - 41 - 45 - 47 - 51 center sts of back for back neck opening. Work each side separately and cont to C OFF at back neck every other R, 2 sts 1 time. Complete Pattern IV, and body should now measure 25½" (64cm) - 26" (66cm) - 26¾" (68cm) - 27½" (70cm) - 28¾" (72cm). Using MC, K 1 R on RS, K 1 R on WS. C OFF. Complete second side to match first.

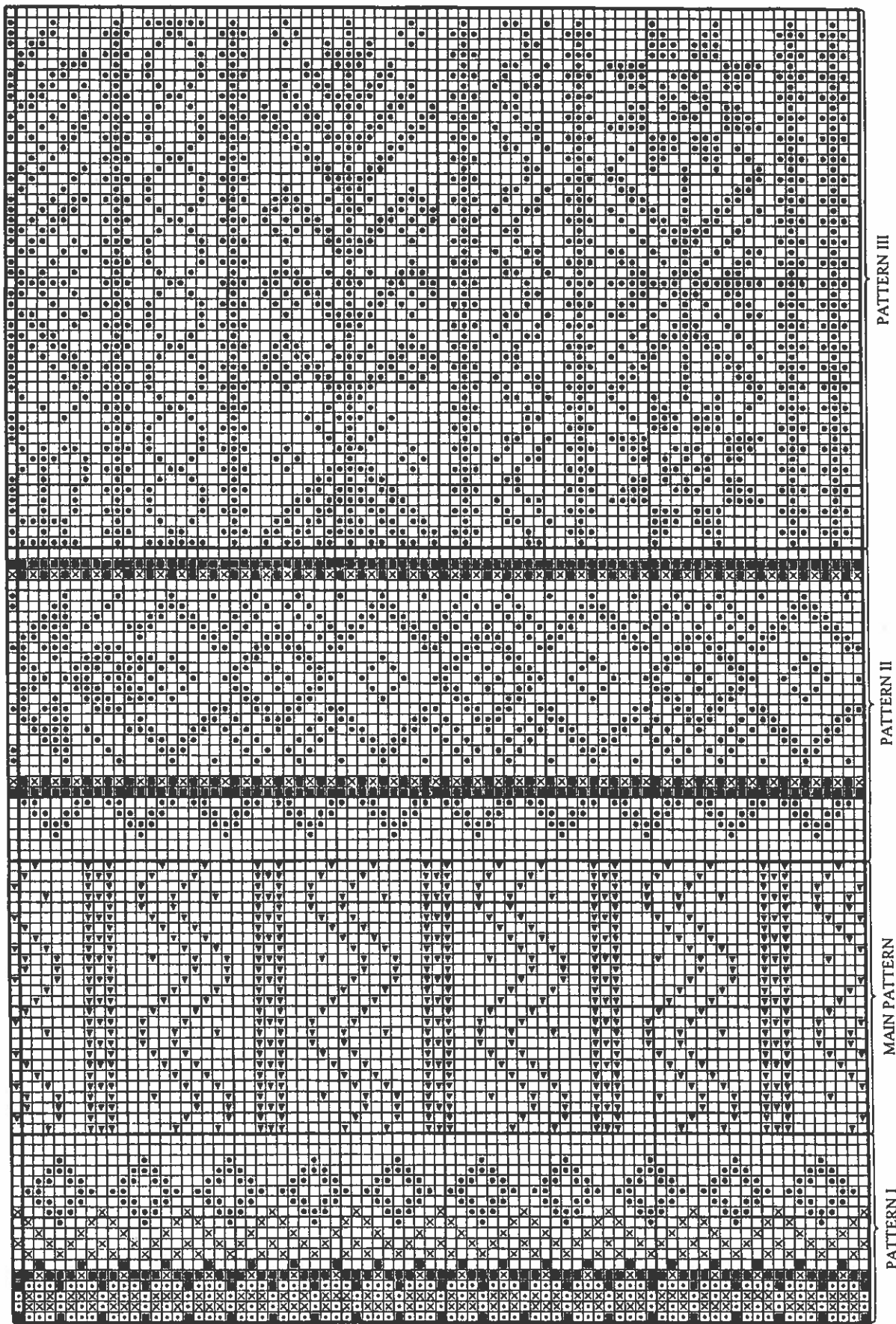
SLEEVES: Using MC and smaller dp needles, C O 44 - 46 - 48 - 50 - 52 sts. Join and work in a rd. Work K 1, P 1 ribbing for 2¾" (6cm) and inc on last rd 23 - 23 - 25 - 25 - 25 sts evenly spaced. Change to larger dp needles. K 1 rd, then work Pattern I, center st on graph = center st of sleeve. At the same time, start to inc 1 st at beg and end of rd, always leaving 2 sts between inc sts, every fourth rd 28 - 29 - 30 times for sizes XS - S - M, and every fourth rd 27 - 29 times then every other rd 7 - 6 times for sizes L - XL. When Pattern I is complete, work Main Pattern until sleeve measures 13" (33cm) - 13¾" (35cm) - 14½" (37cm) - 15½" (39cm) - 16½" (41cm). **NOTE:** P st curves in Main Pattern should go in the same direction all the time; don't change direction of curves when mirror image is worked. Now work Pattern II, center st on graph = center st of sleeve, the "rose" motif should appear at center top of sleeve. When Pattern II is complete, sleeve should measure 17¼" (44cm) - 18¼" (46cm) - 18¾" (48cm) - 19½" (50cm) - 20½" (52cm). Using MC, K 2 rds, the P 5 rds for sleeve facing. C OFF.

FINISHING: Steam pieces lightly from WS. Sew seams with yarn.

Measure upper edge of sleeves without stretching. Mark off this width on each side of the body, from the top down, for armholes. Sew 2 machine seams along each side and across bottom of each armhole area = 4 sts in width. Cut between pairs of machine seams. Sew shoulders tog from RS through P R = K on WS. Sew sleeves in from RS through first st inside machine seams on body, and through lower loops of first P rd of sleeve facing. Sew facing over cut edges on WS of body.

NECKBAND: Using MC and larger dp needles, pick up 112 - 112 - 120

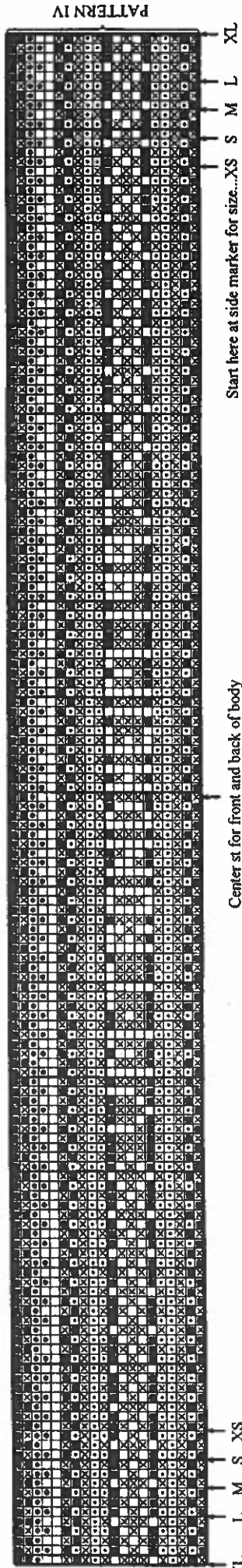
- 120 - 128 sts around neck opening. Pick up using method described on page 2. Join and work in a rd. Work Neckband Pattern, then change to smaller dp needles. Using MC work 4 rds K 1, P 1 ribbing, then K 1 rd, then P 1 rd = fold line, then work 4 more rds K 1, P 1 ribbing. Now change to CC2 and work 2 more rds ribbing, then change to MC and work 2 more rds ribbing, then change to CC4 and work 2 more rds ribbing, then change to MC and work 8 more rds ribbing. C OFF in ribbing. Fold neckband at fold line and sew loosely to WS.



Center st for front and back of body and for sleeves

Start here at side marker for size...XS S M L XL

WOMAN'S/MAN'S PULLOVER

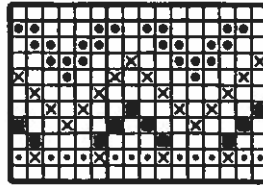


Center st for front and back of body

Stop here at side marker for size...
XL L M S XS

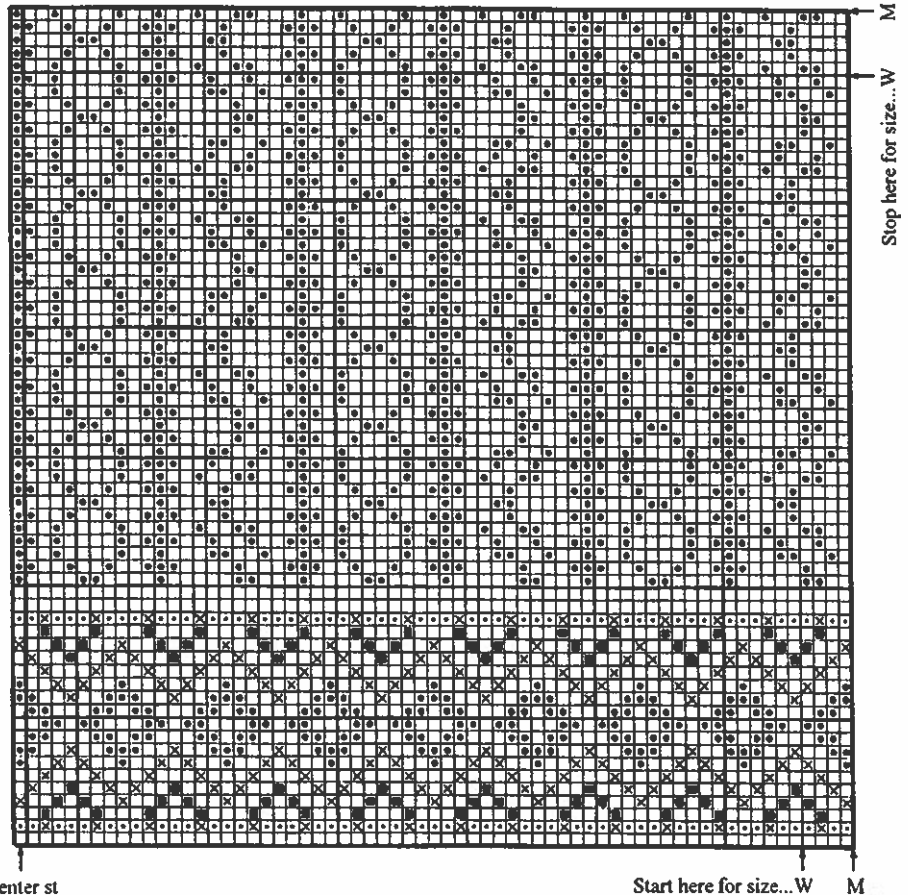
Start here at side marker for size...XS
XL L M L XL

WOMAN'S/MAN'S PULLOVER
NECKBAND PATTERN



- = MC = A. natural, B. red heather, C. navy,
E. charcoal, G. deep teal, F. black
- ◻ = CC1 = A. charcoal, B. dark plum, C. grape,
E. china blue, G. copper, F. warm burgundy
- = CC2 = A. deep olive, B. deep blue, C. china blue,
E. copper, G. dark taupe, F. midnight blue
- ⊗ = CC3 = A. flame red, B. deep teal, C. warm burgundy,
E. charcoal gray, G. red heather, F. deep olive
- ◻ = CC4 = A. charcoal gray, B. black, C. sand gray,
E. sand gray, G. light sheep heather, F. natural
- ▼ = P st in MC

WOMAN'S/MAN'S CAP 2
CAP PATTERN



Center st

Start here for size...W M

Stop here for size...M

TRONDHEIM 1997



WOMAN'S/MAN'S CAP 1

TRONDHEIM 1997



WOMAN'S/MAN'S CAP 2

SIZES: Woman Man

MATERIALS: Heilo or Falk
 Main Color: 100 100 gr
 Contrast Colors 1 thru 4: 50 gr or remnants, for both sizes

CAP: Using MC and smaller dp needles, C O 112 - 128 sts. Join and work in a rd. Work 4 rds K 1, P 1 ribbing, K 1 rd, then work Pattern I as shown on graphs for woman's/man's pullover. When Pattern I is complete, P 1 rd, then K 5 rds. Now turn work with WS facing out. Work Main Pattern until cap measures 5 7/8" (15cm) - 6 1/4" (16cm) from P rd. NOTE: P st curves in Main Pattern should go in the same direction all the time; don't change direction of curves when mirror image is worked.

SHAPING: On next rd, K 2 tog before and after each vertical stripe (= 3 sts in width) created by P sts in Main Pattern = 14 - 16 sts dec on rd. Cont to work the vertical P st stripes but work all rem sts in st st; don't work P st curves. Dec at stripes every fourth rd until there are 14 - 16 sts rem. Gather rem sts on a piece of yarn and fasten off. Using all colors, braid 2 short ties and make a small pom pom to fasten to each tie. Sew ties to top of cap.

SIZES: Woman Man

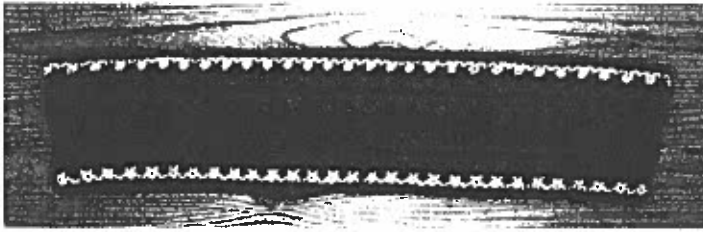
MATERIALS: Heilo or Falk
 Main Color: 100 100 gr
 Contrast Colors 1 thru 3: 50 gr or remnants, for both sizes
 Contrast Color 4: 50 50 gr

CAP: Using MC and smaller dp needles, C O 121 - 129 sts. Join and work in a rd. Work 22 rds st st, then P 1 rd. Change to larger dp needles. Work Cap Pattern, beg as shown on graph, work up to and including center st, then work mirror image to complete rd. Work entire Cap Pattern graph for Man's size, and stop for Woman's size as shown on graph.

SHAPING: Using MC, K 2 tog over entire next rd, K 1 rd without dec, then K 2 tog over entire next rd, and K 1 rd without dec again. Gather rem sts on a piece of yarn and fasten off. Using all colors, make a pom pom and fasten to top of cap. Fold cap at P rd and sew loosely to WS.

(See Page 4 for Woman's/Man's Cap 2 - Cap Pattern)

TRONDHEIM 1997



WOMAN'S/MAN'S HEADBAND

SIZES: Woman Man

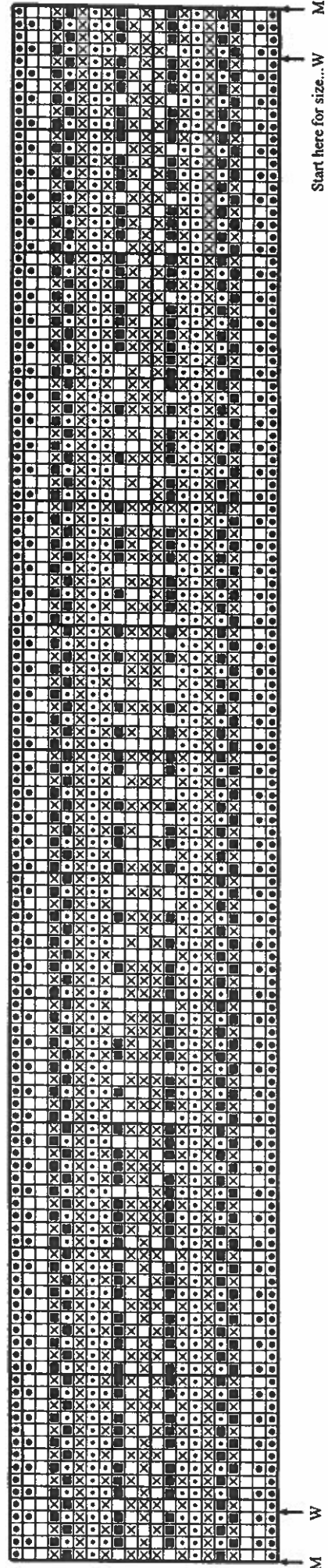
MATERIALS: Heilo or Falk

Main Color: 50 50 gr

Contrast Colors 1 thru 4: 50 gr or remnants, for both sizes

HEADBAND: Using CC4 and smaller dp needles, C O 117 - 125 sts. Join and work in a rd. Work 13 rds st st, P 1 rd, then change to larger dp needles. Work Headband Pattern, beg as shown on graph. When Headband Pattern is complete, change to smaller dp needles and using CC4, P 1 rd then work 13 rds st st. C OFF. Fold headband at both P rds and sew C O edge to C OFF edge.

WOMAN'S/MAN'S HEADBAND
HEADBAND PATTERN



- = MC = A. natural, B. red heather, C. navy,
 E. charcoal, G. deep teal, F. black
- ◻ = CC1 = A. charcoal, B. dark plum, C. grape,
 E. china blue, G. copper, F. warm burgundy
- ◼ = CC2 = A. deep olive, B. deep blue, C. china blue,
 E. copper, G. dark taupe, F. midnight blue
- ⊗ = CC3 = A. flame red, B. deep teal, C. warm burgundy,
 E. charcoal gray, G. red heather, F. deep olive
- ◻ = CC4 = A. charcoal gray, B. black, C. sand gray,
 E. sand gray, G. light sheep heather, F. natural
- ◻ = P st in MC

TRONDHEIM 1997



WOMAN'S/MAN'S STOCKINGS

SIZES: Woman Man

MATERIALS: Heilo or Falk

Main Color: 250 300 gr

Contrast Colors 1 thru 4: 50 gr or remnants, for both sizes

LEG: Using CC and smaller dp needles, C O 84 - 96 sts. Join and work in a rd. Work K 1, P 1 ribbing for 4¾" (12cm) - 5½" (14cm). Change to larger dp needles and work Pattern I, beg as shown on graph for each size, work up to and including center st, then work mirror image to complete rd. When Pattern I is complete, work Main Pattern. NOTE: P st curves in Main Pattern should go in the same direction all the time; don't change direction of curves when mirror image is worked. Work 3 center back sts in a stripe all rds as shown on graph, and dec on each side of center back stripe as shown. Complete entire Main Pattern graph as shown for each size.

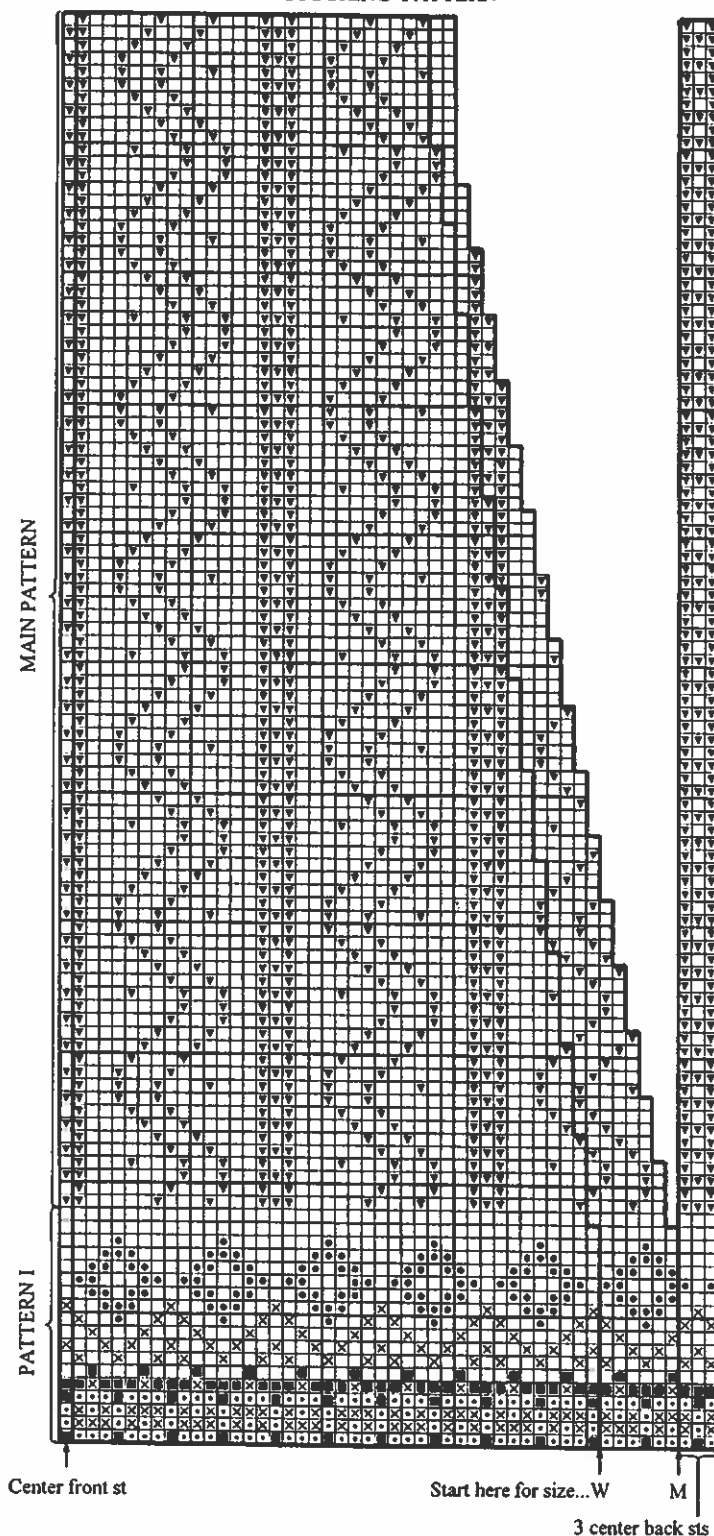
HEEL: Using MC, work back and forth in st st over 27 - 29 center back sts for heel. Place instep sts on a holder. Work until heel measures 2⅞" (6cm) - 2½" (6½cm).

HEEL SHAPING: Working from RS, K 18 - 19, turn, and always sl first st after turn and tighten it slightly, P 10, turn, K up to 1 st before "hole" left by first turn, K 2 tog, K 1, turn, P up to 1 st before "hole," P 2 tog, P 1, turn, and cont in this manner until all heel sts have been worked = 18 - 19 sts on R.

FOOT: Pick up approx 12 - 14 sts along each side of heel flap and pick up instep sts from holder. Now work in a rd again over all sts. Work Main Pattern over instep sts and st st over rem sts. Dec 1 st on each side of instep sts every rd until there are 58 - 62 sts rem on rd. Work until foot measures 7" (18cm) - 7⅞" (20cm) or desired length from heel.

TOE SHAPING: Place a marker at center right and center left of foot. Dec 1 st on each side of each marker (= 4 sts dec on rd), always leaving 1 st between dec sts, every rd until there are 10 sts rem. Gather rem sts on a piece of yarn and fasten off.

WOMAN'S/MAN'S STOCKINGS STOCKING PATTERN



- = MC = A. natural, B. red heather, C. navy, E. charcoal, G. deep teal, F. black
- ◻ = CC1 = A. charcoal, B. dark plum, C. grape, E. china blue, G. copper, F. warm burgundy
- ◼ = CC2 = A. deep olive, B. deep blue, C. china blue, E. copper, G. dark taupe, F. midnight blue
- ⊗ = CC3 = A. flame red, B. deep teal, C. warm burgundy, E. charcoal gray, G. red heather, F. deep olive
- ◐ = CC4 = A. charcoal gray, B. black, C. sand gray, E. sand gray, G. light sheep heather, F. natural
- ▽ = P st in MC

TRONDHEIM 1997



WOMAN'S/MAN'S MITTENS

SIZES: Woman Man

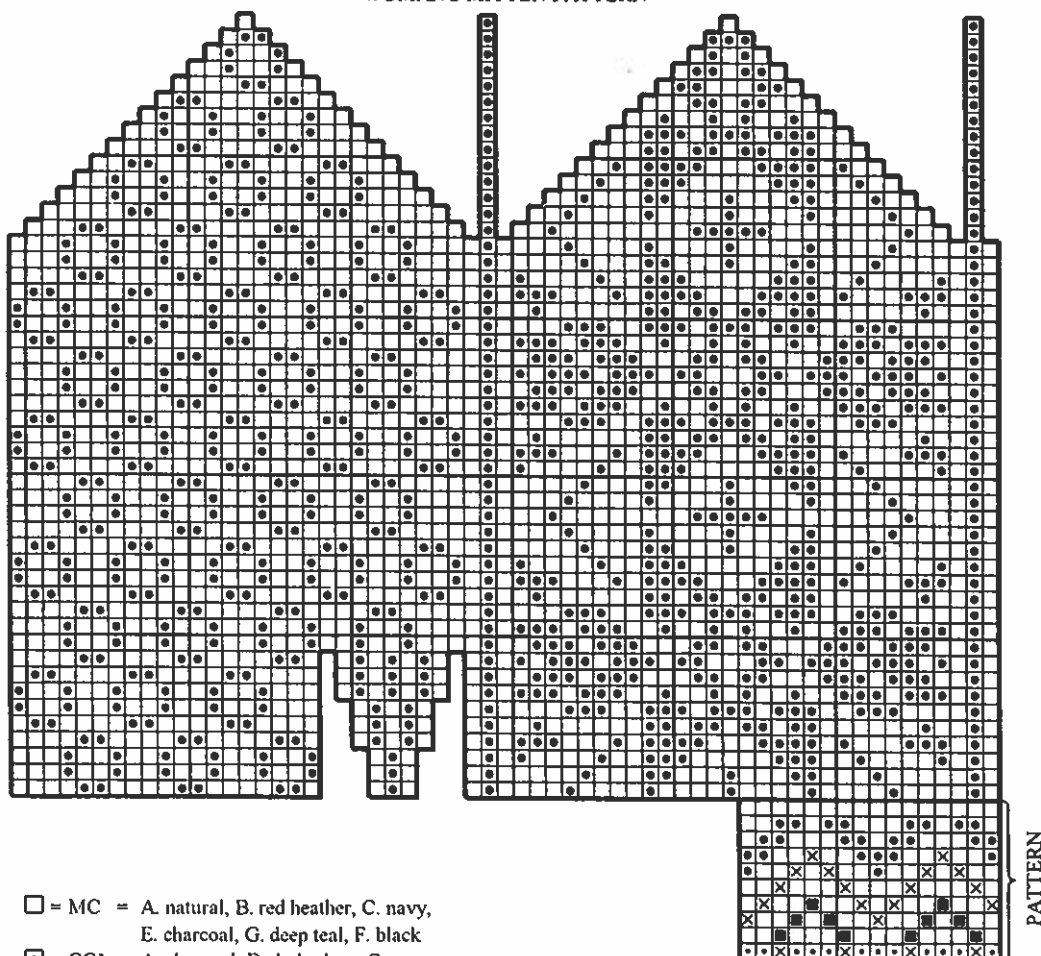
MATERIALS: Heilo or Falk

Main Color: 100 100 gr
 Contrast Colors 1 thru 3: 50 gr or remnants, for both sizes
 Contrast Color 4: 50 50 gr

HAND: Using MC and smaller dp needles, C O 48 - 52 sts. Join and work in a rd. Work K 1, P 1 ribbing for 2 3/4" (6cm) and inc 8 - 4 sts evenly spaced on last rd. Change to larger dp needles. Work Pattern then Woman's Mitten Pattern or Man's Mitten Pattern as shown on graph, and for Woman's size, dec 1 st at beg of first rd, and for Man's size inc 1 st at beg of first rd. Inc for thumb as shown. Place the 9 - 11 thumb sts on a holder and on next rd, C O 9 - 11 new sts over thumb opening. Complete entire Mitten graph and dec at top of hand as shown on graph until there are 4 - 8 sts rem. Gather rem sts on a piece of yarn and fasten off.

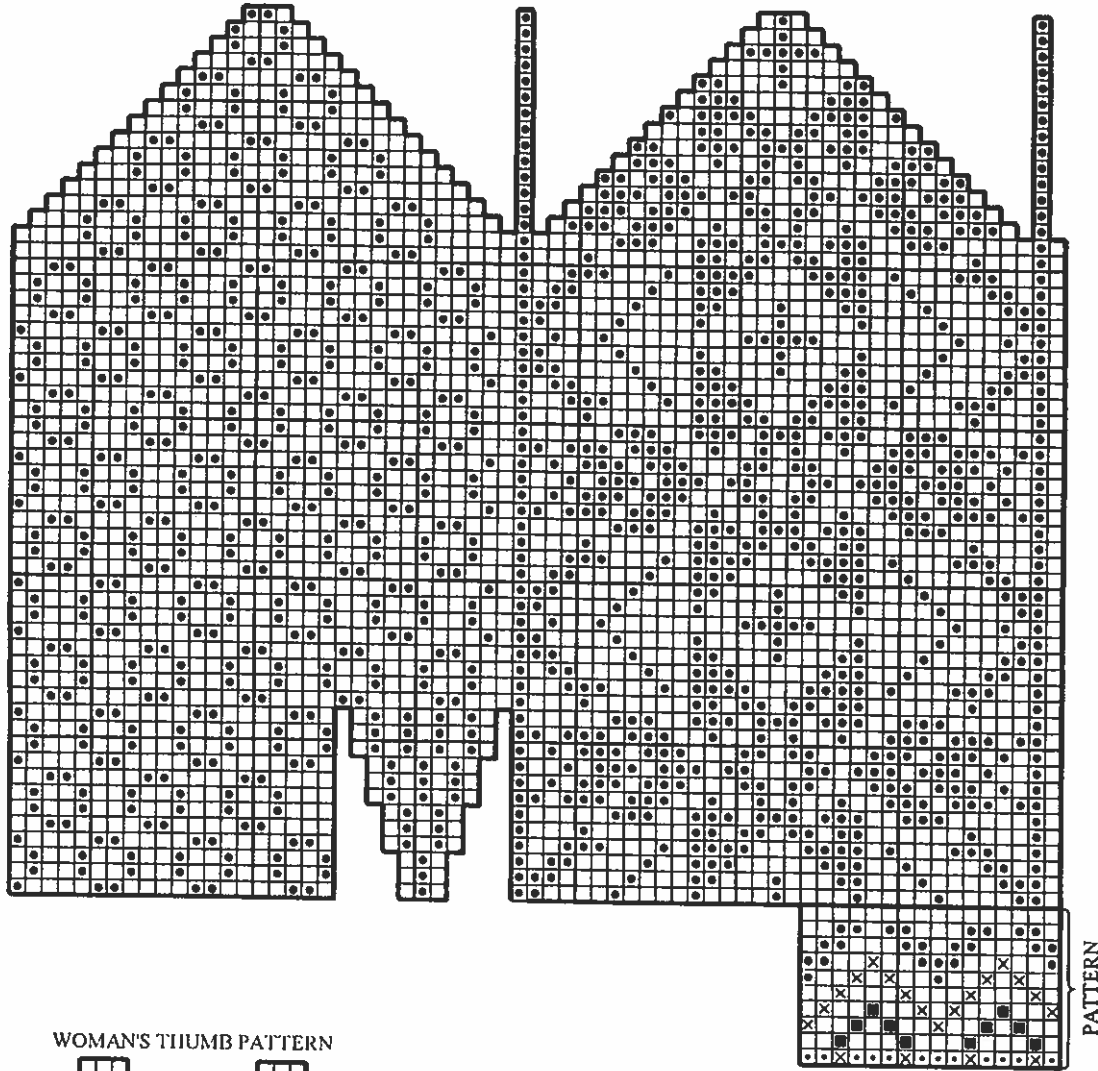
THUMB: Pick up the 9 - 11 thumb sts from holder, and pick up an additional 13 - 13 sts around thumb opening = 22 - 24 sts total. Join and work in a rd. Work Woman's Thumb Pattern or Man's Thumb Pattern as shown on graph, and dec at top of thumb as shown until there are 6 - 6 sts rem. Gather rem sts on a piece of yarn and fasten off. Complete second mitten to match first, and remember to place thumb opening on opposite side of palm.

WOMAN'S MITTEN PATTERN

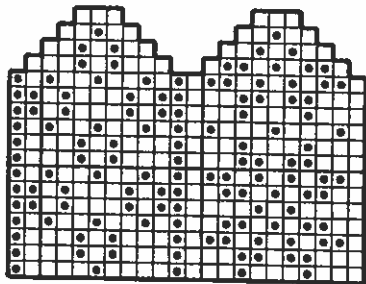


- = MC = A. natural, B. red heather, C. navy,
E. charcoal, G. deep teal, F. black
- ▣ = CC1 = A. charcoal, B. dark plum, C. grape,
E. china blue, G. copper, F. warm burgundy
- = CC2 = A. deep olive, B. deep blue, C. china blue,
E. copper, G. dark taupe, F. midnight blue
- ⊗ = CC3 = A. flame red, B. deep teal, C. warm burgundy,
E. charcoal gray, G. red heather, F. deep olive
- ◻ = CC4 = A. charcoal gray, B. black, C. sand gray,
E. sand gray, G. light sheep heather, F. natural
- ▣ = P st in MC

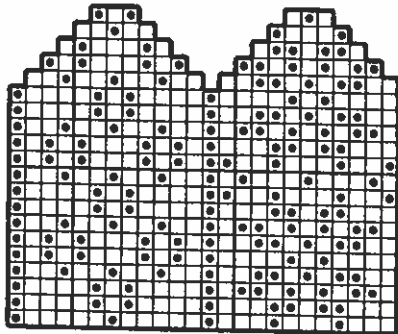
MAN'S MITTEN PATTERN



WOMAN'S THUMB PATTERN



MAN'S THUMB PATTERN



- = MC = A. natural, B. red heather, C. navy,
E. charcoal, G. deep teal, F. black
- ◻ = CC1 = A. charcoal, B. dark plum, C. grape,
E. china blue, G. copper, F. warm burgundy
- ◼ = CC2 = A. deep olive, B. deep blue, C. china blue,
E. copper, G. dark taupe, F. midnight blue
- ⊗ = CC3 = A. flame red, B. deep teal, C. warm burgundy,
E. charcoal gray, G. red heather, F. deep olive
- ◻ = CC4 = A. charcoal gray, B. black, C. sand gray,
E. sand gray, G. light sheep heather, F. natural
- ◻ = P st in MC

TRONDHEIM 1997



WOMAN'S/MAN'S SCARF

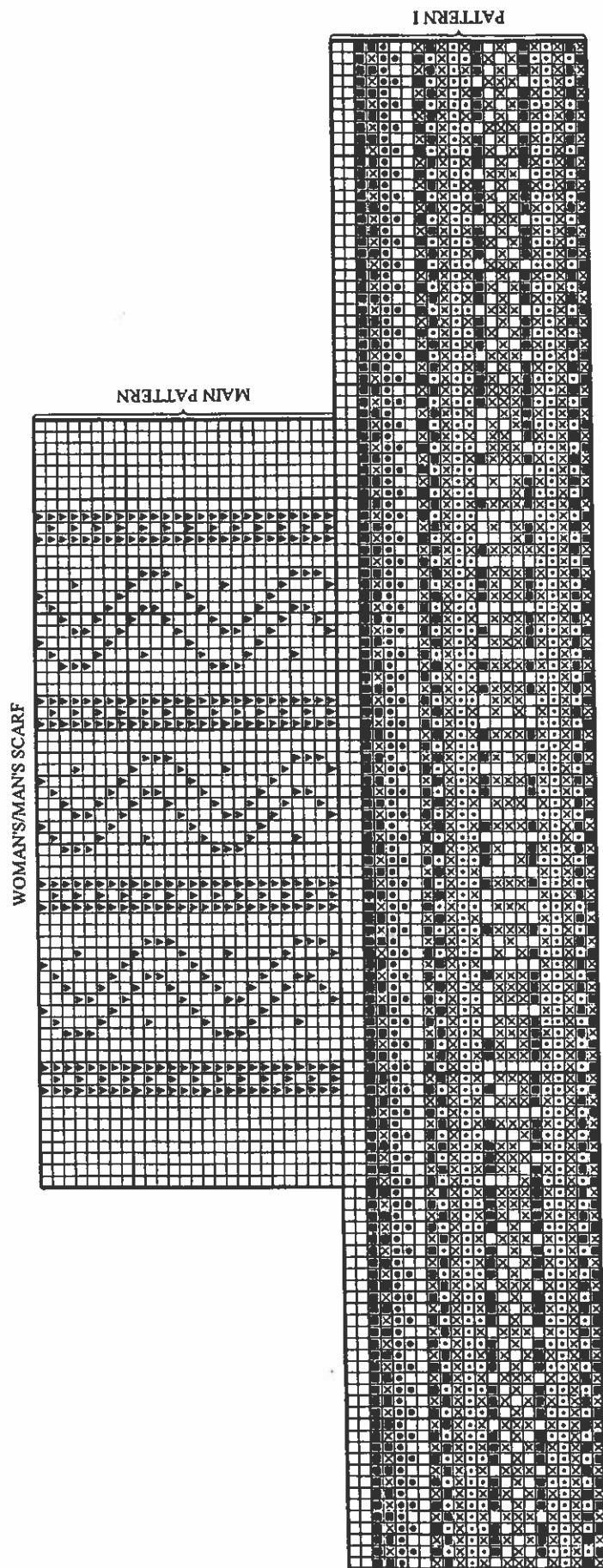
SIZES: Woman/Man (One size only)

MATERIALS: Heilo or Falk

Main Color: 300 gr

Contrast Colors 1 thru 4: 50 gr or remnants

SCARF: Using CC2 and short, larger cir needle, C O 133 sts. Join and work in a rd. K 1 rd, then work Pattern I as shown on graph. When Pattern I is complete, place first and last 33 sts on a holder. Now knit tog 1 st from needle and 1 st from holder over entire next row until 1 st left on needle, knit last st (67 sts on needle). Work Main Pattern, but work in g st over the first and last 3 sts of all Rs on graph. Work until scarf measures approx 43¼" (110cm), or desired length. On next R, inc 1 st in each st, except the last st (133 sts on needle). Join and work in a rd again. Work Pattern I, but work upside down, beg with last rd of graph. When Pattern I is complete, use CC2 to K 1 rd. C OFF. Using MC, tie fringes to both ends of scarf.



- = MC = A. natural, B. red heather, C. navy,
E. charcoal, G. deep teal, F. black
- ◻ = CC1 = A. charcoal, B. dark plum, C. grape,
E. china blue, G. copper, F. warm burgundy
- ◼ = CC2 = A. deep olive, B. deep blue, C. china blue,
E. copper, G. dark taupe, F. midnight blue
- ⊗ = CC3 = A. flame red, B. deep teal, C. warm burgundy,
E. charcoal gray, G. red heather, F. deep olive
- ◻ = CC4 = A. charcoal gray, B. black, C. sand gray,
E. sand gray, G. light sheep heather, F. natural
- ◻ = P st in MC

TRONDHEIM 1997



WOMAN'S/MAN'S CAP 3

SIZES: Woman Man

MATERIALS: Heilo or Falk

Main Color: 50 50 gr

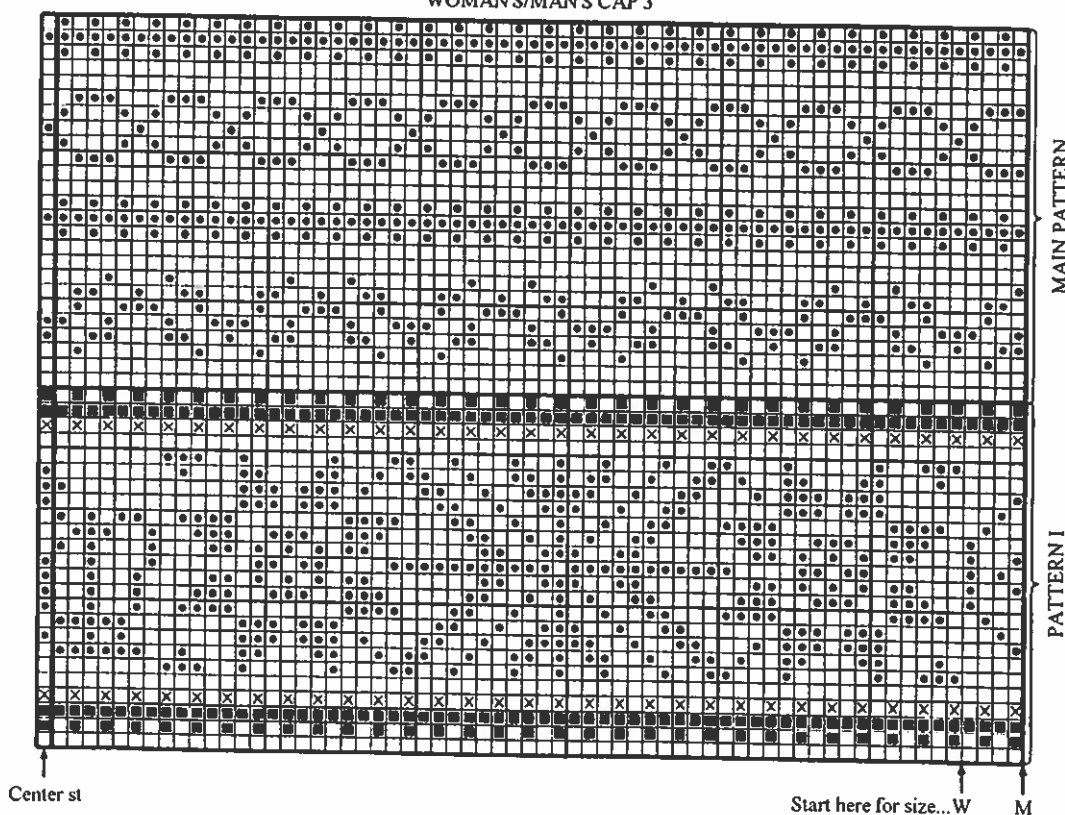
Contrast Colors 1 thru 4: 50 gr or remnants, for both sizes

CAP: Using MC and short, smaller cir needle, C O 121 - 129 sts. Join and work in a rd. Work 24 rds st st, P 1 rd, then change to short, larger cir needle. Work Pattern I, beg as shown on graph, work up to and including center st, then work mirror image to complete rd. When Pattern I is complete, work Main Pattern. Work until cap measures 5 7/8" (15cm) - 6 1/8" (17cm).

SHAPING: Place a marker at beg and middle of rd. Cont to work Main Pattern and at beg of next rd, K 2 tog tbl, then work up to 2 sts before middle marker, K 2 tog before marker, K 2 tog tbl after marker, work up to 2 sts before beg marker and K 2 tog to complete rd. Dec in this manner every rd until there are 6 sts rem. Gather rem sts on a piece of yarn and fasten off. Fold cap at P rd and sew loosely to WS.

EAR FLAPS: Using MC and larger dp needles, pick up 22 - 24 sts along left or right side of cap, beg 16 sts from center back st. Work back and forth in st st, but work g st over the first and last 3 sts of all Rs. Work until ear flap measures 2 3/4" (7cm) - 3 1/8" (8cm). Now dec 1 st inside g st edging at beg and end of every R until there are 6 sts rem. C OFF. Work a second flap to match first, on other side of cap.

WOMAN'S/MAN'S CAP 3



- = MC = A. natural, B. red heather, C. navy,
E. charcoal, G. deep teal, F. black
- ◻ = CC1 = A. charcoal, B. dark plum, C. grape,
E. china blue, G. copper, F. warm burgundy
- ◼ = CC2 = A. deep olive, B. deep blue, C. china blue,
E. copper, G. dark taupe, F. midnight blue
- ⊗ = CC3 = A. flame red, B. deep teal, C. warm burgundy,
E. charcoal gray, G. red heather, F. deep olive
- ◻ = CC4 = A. charcoal gray, B. black, C. sand gray,
E. sand gray, G. light sheep heather, F. natural
- ◻ = P st in MC

TRONDHEIM 1997



CHILD'S PULLOVER

SIZES: 2 4 6 8 10 12 years

MATERIALS: Heilo or Falk

Main Color:	250	300	350	400	450	500 gr
Contrast Color 1:	50	50	50	50	50	50 gr
Contrast Color 2:	50	50	50	50	50	50 gr
Contrast Color 3:	50	50	50	50	50	50 gr
Contrast Color 4:	100	100	100	100	100	100 gr

COLOR SUGGESTIONS:

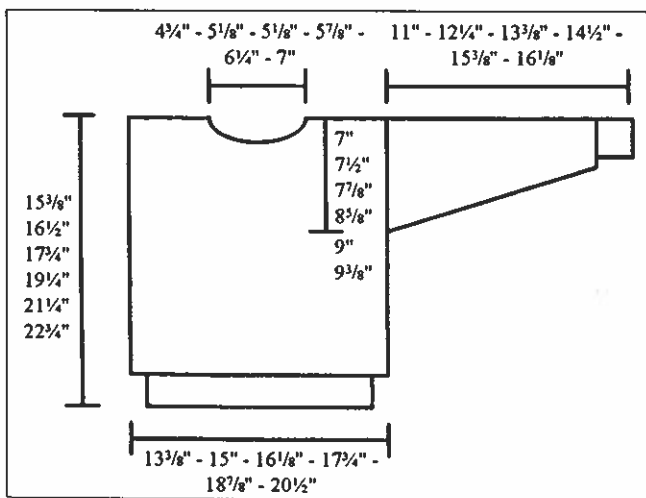
Option	Main Color	Contrast Color
A	natural 0020	CC1 - charcoal 0083 CC2 - deep olive 9472 CC3 - flame red 3918 CC4 - charcoal gray 0007
B	flame red 3918	CC1 - warm burgundy 4246 CC2 - deep blue 5655 CC3 - teal green 7562 CC4 - black 0090
G	deep teal 7382	CC1 - copper 3046 CC2 - dark taupe 2671 CC3 - flame red 3918 CC4 - natural 0020

SUGGESTED NEEDLE SIZES:

Cir and dp needles in US sizes 2 (2½mm) and 3 (3mm) or 4 (3½mm). Use size to obtain correct gauge.

GAUGE: 24 sts and 28 rds of pattern = 4" (10cm)

FINISHED MEASUREMENTS:



WATCH GAUGE CAREFULLY TO OBTAIN CORRECT FINISHED MEASUREMENTS!

BODY: Using MC and smaller cir needle, C O 140 - 156 - 172 - 188 - 204 - 224 sts. Join and work in a rd. Work K 1, P 1 ribbing for 1½" (4cm) - 1½" (4cm) - 1½" (4cm) - 2" (5cm) - 2" (5cm) - 2" (5cm) and inc on last rd 26 sts evenly spaced. Change to larger cir needle. Place a marker at beg of rd and after 83 - 91 - 99 - 107 - 115 - 125 sts = side markers. Work Pattern I, beg as shown on graph, work up to and including center st, work mirror image to next side marker, then beg again as shown on graph in order to make pattern uniform on front and back, work up to and including center st, and work mirror image again to next side marker to complete rd. When Pattern I is complete, work Main Pattern. **NOTE:** P st curves in Main Pattern should go in the same direction all the time; don't change direction of curves when mirror image is worked. Work until body measures 7½" (19cm) - 8¾" (22cm) - 7½" (19cm) - 9" (23cm) - 11" (28cm) - 12½" (32cm), then work Pattern III for sizes 2 - 4 years, but work Pattern II for sizes 6 - 8 - 10 - 12 years. Next, work Pattern IV for all sizes, but for sizes 2 - 4 years, complete Pattern IV then beg front neck opening, and for sizes 6 - 8 - 10 - 12 years, beg front neck opening when there are 6 rds of Pattern IV rem.

FRONT NECK OPENING: C OFF 11 - 13 - 13 - 13 - 17 - 21 center sts of front for front neck opening. Work back and forth, Rs beg at neck opening. Work Pattern V for sizes 2 - 4 years, work last 6 Rs of Pattern IV then Pattern V for sizes 6 - 8 - 10 - 12 years. At the same time, cont to C OFF for neck opening, 3 sts at beg of first 2 Rs, then 2 sts at beg of next 4 Rs, then 1 st at beg of next 4 - 4 - 4 - 8 - 8 - 8 Rs, but when there are 6 - 6 - 8 - 8 - 8 - 8 Rs of Pattern V rem, beg back neck opening.

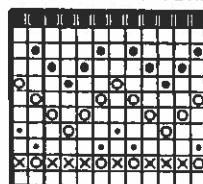
BACK NECK OPENING: C OFF 19 - 21 - 21 - 25 - 29 - 33 center sts of back for back neck opening. Work each side separately and cont to C OFF at back neck every other R, 4 sts 1 time, then 1 st 1 time. Complete Pattern V, then using MC, P 1 R on RS. C OFF. Complete second side to match first.

SLEEVES: Using MC and smaller dp needles, C O 40 - 40 - 44 - 44 - 44 - 48 sts. Join and work in a rd. Work K 1, P 1 ribbing for 1½" (4cm) - 1½" (4cm) - 1½" (4cm) - 2" (5cm) - 2" (5cm) - 2" (5cm) and inc on last rd 13 - 15 - 13 - 17 - 17 - 17 sts evenly spaced. Change to larger dp needles. Work Pattern I, center st on graph = center st of sleeve. At the same time, start to inc 1 st at beg and end of every fourth rd, always leaving 2 sts between inc sts, 17 - 19 - 20 - 22 - 24 - 25 times = 87 - 93 - 97 - 105 - 109 - 115 sts total. When Pattern I is complete, work Main Pattern. **NOTE:** P st curves in Main Pattern should go in the same direction all the time; don't change direction of curves when mirror image is worked. Work until sleeve measures 7½" (20cm) - 9" (23cm) - 10¼" (26cm) - 11½" (29cm) - 12¼" (31cm) - 13" (33cm). Now work Pattern II, then using MC, K 1 rd, then P 5 rds for sleeve facing. C OFF.

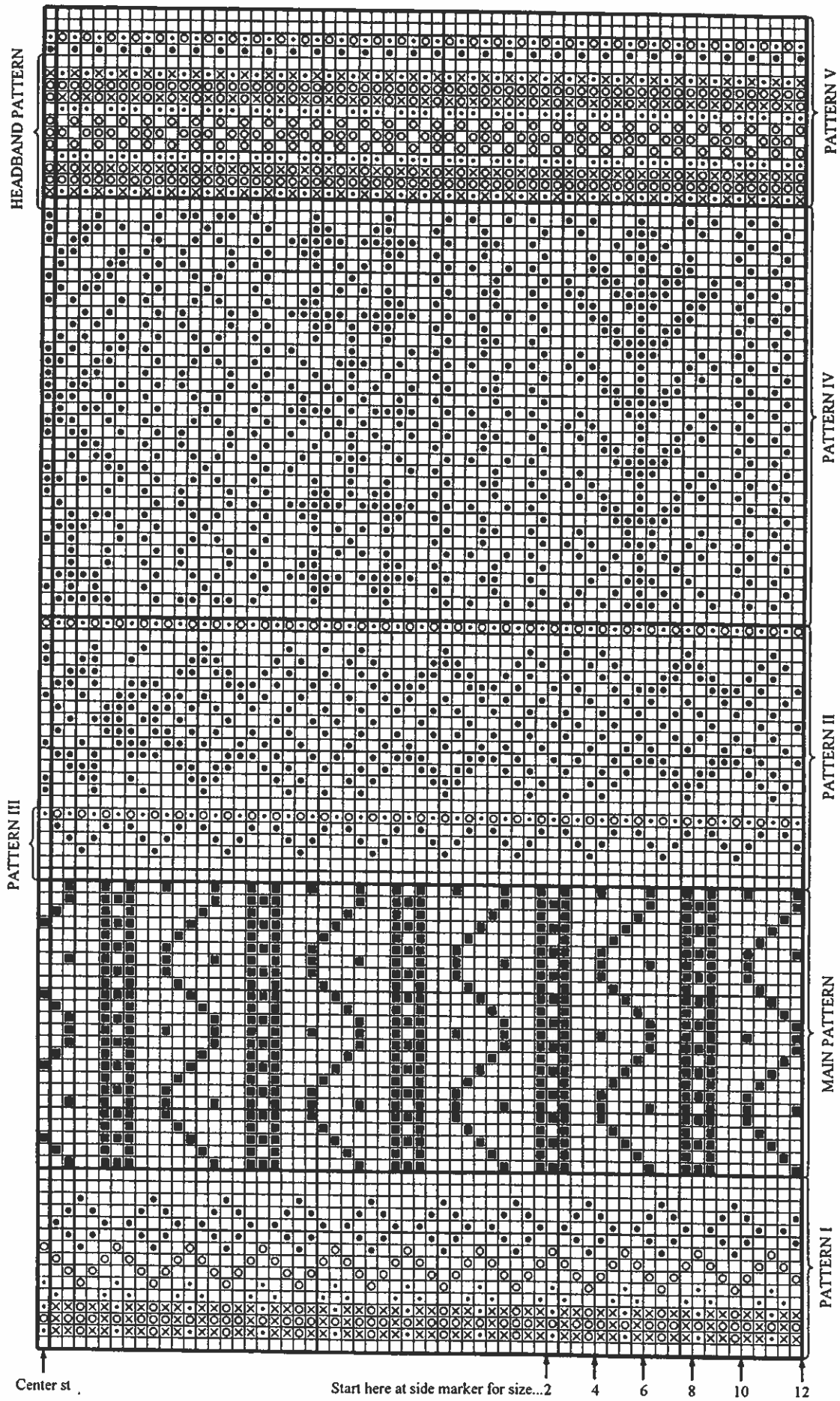
FINISHING: Steam pieces lightly from WS. Sew seams with yarn. Measure upper edge of sleeves without stretching. Mark off this width on each side of the body, from the top down, for armholes. Sew 2 machine seams along each side and across bottom of each armhole area = 4 sts in width. Cut between pairs of machine seams. Sew shoulders tog from RS through P R. Sew sleeves in from RS through first st inside machine seams on body, and through lower loops of first P rd of sleeve facing. Sew facing over cut edges on WS of body.

NECKBAND: Using MC and smaller dp needles, pick up 96 - 102 - 102 - 108 - 108 - 114 sts around neck opening. Pick up using method described on page 2. Join and work in a rd. Work first rd of Neckband Pattern, then change to larger dp needles and complete Neckband Pattern. When Neckband Pattern is complete, change back to smaller dp needles, and work K 1, P 1 ribbing in this manner: 2 rds of MC, then 2 rds of CC2, then 2 rds of MC, then 2 rds of CC4, then 2 rds MC. C OFF in ribbing. Fold neckband at P rd (end of Neckband Pattern) and sew neatly to WS.

**CHILD'S PULLOVER
NECKBAND PATTERN**



- = MC = A. natural, B. flame red, G. deep teal
- ⊗ = CC1 = A. charcoal, B. warm burgundy, G. copper
- ⊠ = CC2 = A. deep olive, B. deep blue, G. dark taupe
- ⊙ = CC3 = A. flame red, B. teal green, G. flame red
- ⊚ = CC4 = A. charcoal gray, B. black, G. natural
- = P st in MC



Center st .

Start here at side marker for size...2 4 6 8 10 12

- = MC = A. natural, B. flame red, G. deep teal
- ⊗ = CC1 = A. charcoal, B. warm burgundy, G. copper
- ◻ = CC2 = A. deep olive, B. deep blue, G. dark taupe
- ⊕ = CC3 = A. flame red, B. teal green, G. flame red
- ⊗ = CC4 = A. charcoal gray, B. black, G. natural
- = P st in MC

TRONDHEIM 1997



CHILD'S STOCKINGS

SIZES: 2/4 6/8 10/12 years

MATERIALS: Heilo or Falk

Main Color: 150 150 200 gr
 Contrast Colors 1 thru 4: 50 gr or remnants, for all sizes

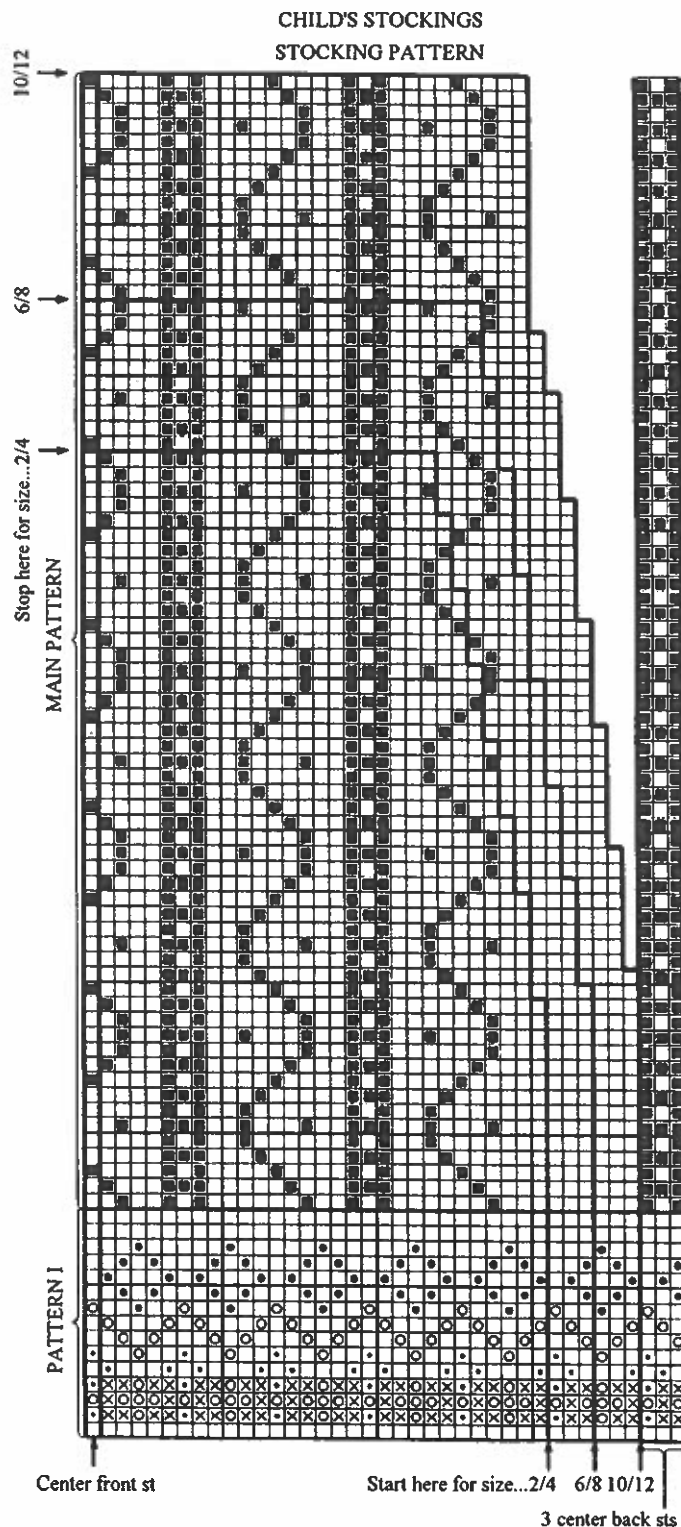
LEG: Using MC and smaller dp needles, C O 52 - 60 - 68 sts. Join and work in a rd. Work K 2, P 2 ribbing for 2³/₈" (6cm) - 3¹/₈" (8cm) - 3¹/₂" (9cm) and inc on last rd 10 - 8 - 6 sts evenly spaced. Change to larger dp needles and work Pattern I, beg as shown on graph for each size, work up to and including center st, then work mirror image to complete rd. When Pattern I is complete, work Main Pattern. NOTE: P st curves in Main Pattern should go in the same direction all the time; don't change direction when mirror image is worked. Work 3 center back sts in a stripe all rds as shown on graph, and dec on each side of stripe as shown. Complete entire Main Pattern graph as shown for each size.

HEEL: Using MC, work back and forth in st st over 22 - 24 - 26 center back sts for heel. Place instep sts on a holder. Work until heel measures 1¹/₂" (4cm) - 1³/₄" (4¹/₂cm) - 2" (5cm).

HEEL SHAPING: Working from RS, K 14 - 16 - 18, turn, and always sl first st after turn and tighten it slightly, P 10, turn, K up to 1 st before the "hole" left by first turn, K 2 tog, K 1, turn, P up to 1 st before "hole," P 2 tog, P 1, turn, and cont in this manner until all sts have been worked.

FOOT: Pick up 9 - 10 - 11 sts along each side of heel, and pick up instep sts from holder. Now work in a rd again over all sts, rd beg at center under foot. Work Main Pattern over instep sts and plain st st in MC over rem sts. Dec 1 st on each side of instep sts every other rd until there are 44 - 48 - 52 sts rem. Work until foot measures 6¹/₄" (16cm) - 6³/₈" (17cm) - 7¹/₂" (19cm) or desired length from heel.

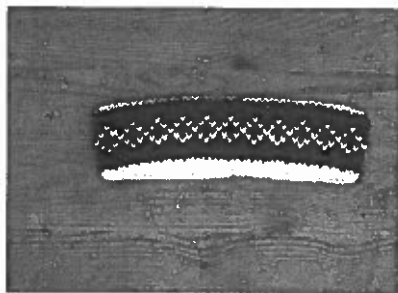
TOE SHAPING: Place a marker at center right and center left of foot. Dec 1 st on each side of each marker (= 4 sts dec on rd), always leaving 1 st between dec sts, every rd until there are 4 sts rem. Gather rem sts on a piece of yarn and fasten off.



- = MC = A. natural, B. flame red, G. deep teal
- ⊗ = CC1 = A. charcoal, B. warm burgundy, G. copper
- ⊠ = CC2 = A. deep olive, B. deep blue, G. dark taupe
- ⊙ = CC3 = A. flame red, B. teal green, G. flame red
- ⊡ = CC4 = A. charcoal gray, B. black, G. natural
- = P st in MC

TRONDHEIM 1997

TRONDHEIM 1997



CHILD'S HEADBAND

SIZES: 2/4 6/8 10/12 years

MATERIALS: Heilo or Falk

Main Color: 50 50 50 gr
 Contrast Colors 1 thru 4: 50 gr or remnants, for all sizes

HEADBAND: Using MC and smaller dp needles, C O 88 - 100 - 112 sts. Join and work in a rd. Work 7 rds st st, P 1 rd, then change to larger dp needles. Work Headband Pattern (see graphs for child's pullover). When Headband Pattern is complete, change back to smaller dp needles, P 1 rd, then work 7 rds st st. C OFF. Fold headband at both P rds and sew C O edge to C OFF edge.

- ☐ = MC = A. natural, B. flame red, G. deep teal
- ☒ = CC1 = A. charcoal, B. warm burgundy, G. copper
- ☑ = CC2 = A. deep olive, B. deep blue, G. dark taupe
- ⊙ = CC3 = A. flame red, B. teal green, G. flame red
- ⊛ = CC4 = A. charcoal gray, B. black, G. natural
- = P st in MC



CHILD'S MITTENS

SIZES: 2/4 6/8 10/12 years

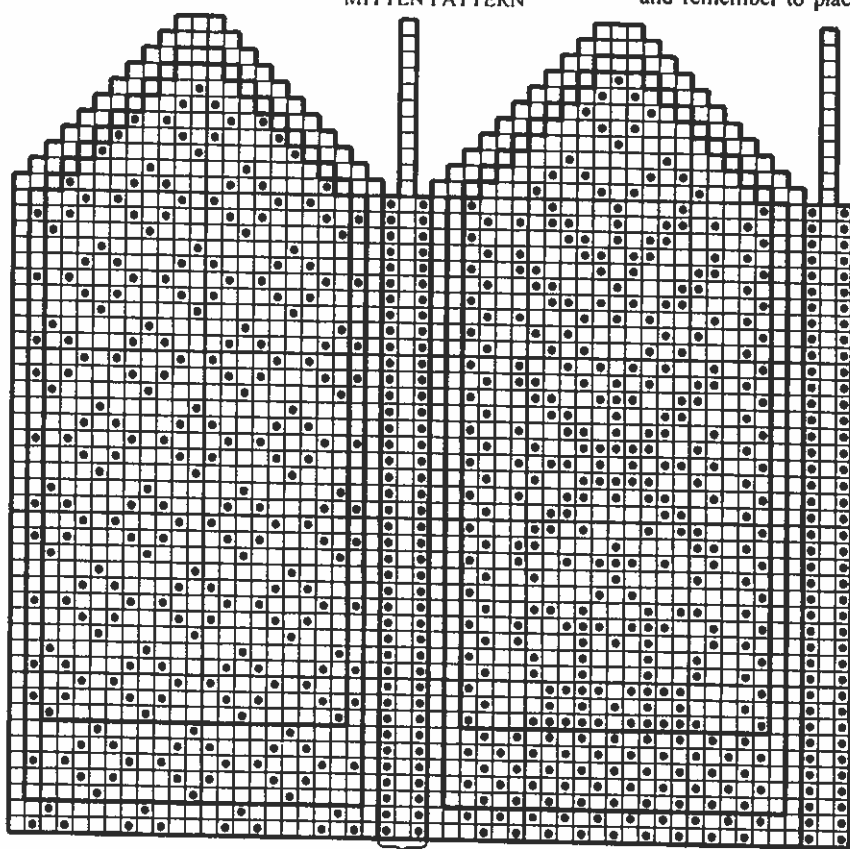
MATERIALS: Heilo or Falk

Main Color: 50 50 50 gr
 Contrast Color 4: 50 gr or remnants, for all sizes

HAND: Using MC and smaller dp needles, C O 44 - 48 - 52 sts. Join and work in a rd. Work K2, P2 ribbing for 1½" (4cm) 2" (5cm) - 2¾" (6cm). Change to larger dp needles. Work Mitten Pattern as shown for all sizes, including, at the same time, Pattern I and II at sides of hand for all sizes all rds. Work until hand measures 2" (5cm) - 2¾" (6cm) - 2¾" (7cm) from end of ribbing. Now knit in a piece of marker yarn for thumb opening, knit 5 - 6 - 7 sts directly following pattern II, then break off waste yarn. Slide these 5 - 6 - 7 waste yarn sts back to where they began and continue to work hand with MC and CC 4. Cont to work Mitten Pattern as shown, and dec at top of hand as shown. Gather rem sts on a piece of yarn and fasten off.

THUMB: Pull out the marker yarn for thumb opening and, using MC and larger dp needles, pick up the resulting loose sts plus 1 new st on left and right side of opening. Join and work in a rd. Work st st until thumb is desired length, then dec at top of thumb as for top of hand. Gather rem sts on a piece of yarn and fasten off. Work a second mitten to match first, and remember to place thumb opening on opposite side of palm.

CHILD'S MITTENS
MITTEN PATTERN



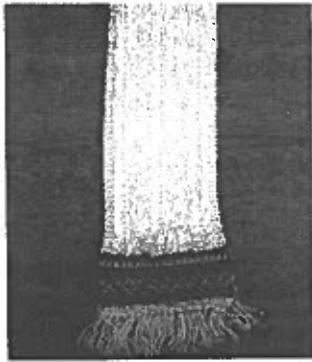
PATTERN II

PATTERN I

Inside line is for size 2/4 years
 Middle line is for size 6/8 years
 Outside line is for size 10/12 years

TRONDHEIM 1997

TRONDHEIM 1997



CHILD'S SCARF



CHILD'S CAP 1

SIZES: 2/4 6/8 10/12 years

MATERIALS: Heilo or Falk

Main Color: 100 150 150 gr
 Contrast Colors 1 thru 4: 50 gr or remnants, for all sizes

SCARF: Using MC and larger dp needles, C O 76 - 76 - 100 sts. Join and work in a rd. K 1 rd, then work Pattern V (see graphs for child's pullover). When Pattern V is complete, place half of sts on a holder. Now K tog 1 st from needle and 1 st from holder over entire next R = 38 - 38 - 50 sts rem on R when finished. Cont to work back and forth. Work Scarf Pattern and dec 1 st on first R, but work g st over first and last 3 sts of all Rs. Work until scarf measures approx 31½" (80cm) - 35½" (90cm) - 39½" (100cm) or desired length, and on last R of Scarf Pattern inc 1 st. On next R, inc 1 st in each st (= 76 - 76 - 100 sts on R when finished). Now divide all sts evenly over 4 dp needles and work in a rd again. Work Pattern V upside down, beg with last rd of graph. When Pattern V is complete, use MC to K 1 rd, then C OFF. Using MC, make fringes and tie to both ends of scarf.

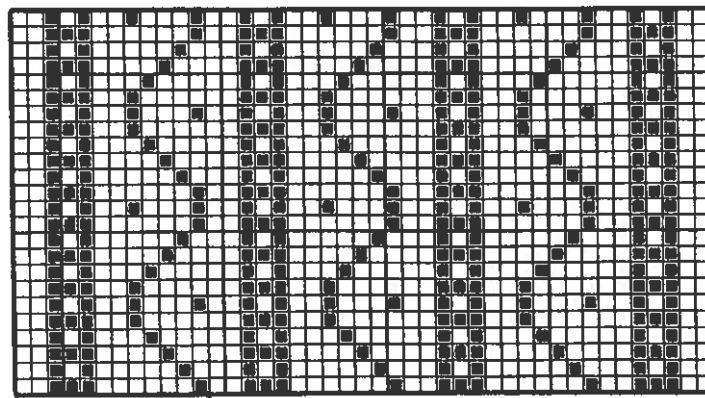
SIZES: 2/4 6/8 10/12 years

MATERIALS: Heilo or Falk

Main Color: 50 50 100 gr
 Contrast Colors 1 thru 4: 50 gr or remnants, for all sizes

CAP: Using MC and smaller dp needles, C O 96 - 104 - 112 sts. Join and work in a rd. Work K 1, P 1 ribbing for 1½" (4cm), then change to larger dp needles. Work Cap Pattern and inc 1 st on first rd. Beg as shown on graph, work up to and including center st, then work mirror image to complete rd. NOTE: P sts curves in Cap Pattern should go in the same direction all the time; don't change direction of curves when mirror image is worked. Stop working Cap Pattern for each size as shown on graph. When Cap Pattern is complete, use MC to K 1 rd and K 2 tog over entire rd. Gather rem sts on a piece of yarn and fasten off. Using MC, make a pom pom and fasten to top of cap.

**CHILD'S SCARF
 SCARF PATTERN**



Stop here for
 sizes 10/12 years

Stop here for
 sizes 2/4-6/8 years

Start here for
 all sizes

- = MC = A. natural, B. flame red, G. deep teal
- ⊗ = CC1 = A. charcoal, B. warm burgundy, G. copper
- ⊕ = CC2 = A. deep olive, B. deep blue, G. dark taupe
- ⊙ = CC3 = A. flame red, B. teal green, G. flame red
- ◻ = CC4 = A. charcoal gray, B. black, G. natural
- = P st in MC

TRONDHEIM 1997

TRONDHEIM 1997



CHILD'S CAP 2

SIZES: 2/4 6/8 10/12 years

MATERIALS: Heilo or Falk

Main Color: 50 100 100 gr
 Contrast Colors 1 thru 4: 50 gr or remnants, for all sizes

CAP: Using MC and smaller dp needles, C O 96 - 104 - 112 sts. Join and work in a rd. Work 13 rds st st, then P 1 rd. Change to larger dp needles. Work Cap Pattern and inc 1 st on first rd. Beg Cap Pattern as shown on graph, work up to and including center st, then work mirror image to complete rd. NOTE: P sts curves in Cap Pattern should go in the same direction all the time; don't change direction of curves when mirror image is worked. Stop working Cap Pattern as shown on graph for each size. When Cap Pattern is complete, K 1 rd and K 2 tog over entire rd. Gather rem sts on a piece of yarn and fasten off. Using all colors, make a pom pom and fasten to top of cap. Fold cap at P rd and sew loosely to WS.

EAR FLAPS: Using MC and larger dp needles, pick up 17 - 19 - 22 sts along left or right side of cap, beg approx 2 3/8" (6cm) from center back of cap. Pick up using method described on page 2. Work back and forth. Work first and last 2 sts of all Rs in g st, and work rem sts in st st. Work until flap measures 1 1/2" (4cm) - 2" (5cm) - 2 3/8" (6cm). Now dec 1 st at beg and end of R, inside g st edging, every R until there are 4 sts rem. C OFF. Using MC, braid a tie and sew it to ear flap. Work second flap to match first.



CHILD'S CAP 3

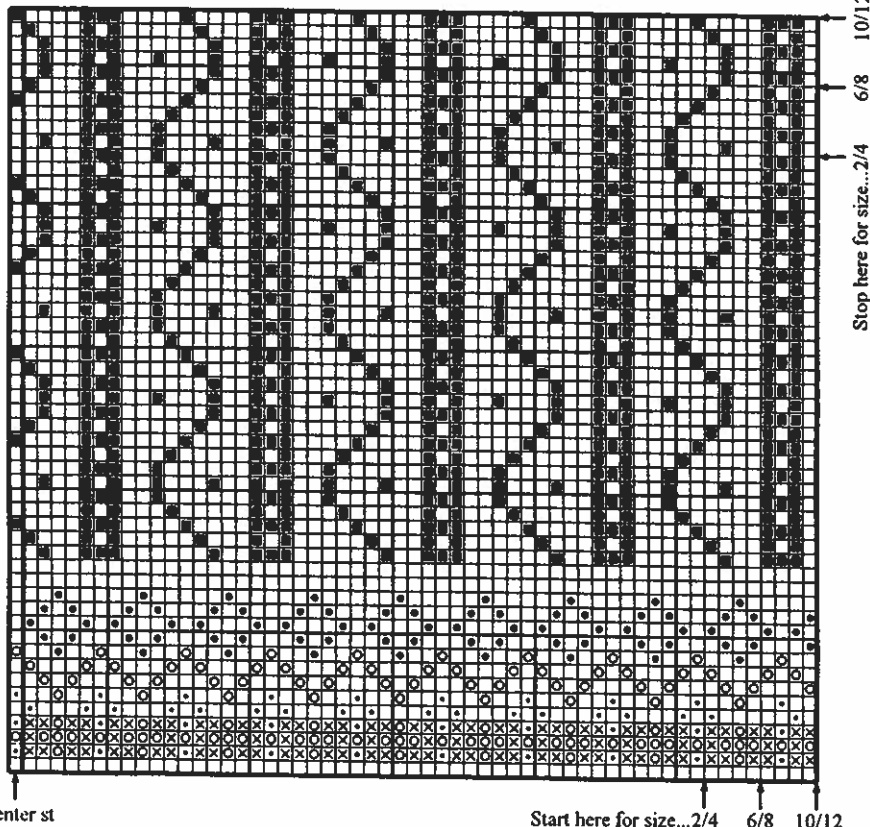
SIZES: 2/4 6/8 10/12 years

MATERIALS: Heilo or Falk

Main Color: 50 100 100 gr
 Contrast Colors 1 thru 4: 50 gr or remnants, for all sizes

CAP: Using MC and smaller dp needles, C O 96 - 108 - 120 sts. Join and work in a rd. Work 4 rds of K 1, P 1 ribbing. Change to larger dp needles. Work 2 rds st st, then Main Pattern (see child's pullover graphs) for 1 1/2" (4cm), then K 1 rd, P 1 rd and turn work with WS facing out. Work st st for 1 1/8" (3cm). Now work in this manner over rem of cap: Work Pattern V (see child's pullover graphs), 2 rds st st in MC, Pattern V upside down (beg with last rd of graph). Work until cap measures 5 7/8" (15cm) - 6 1/4" (16cm) - 6 3/8" (17cm) from P rd. Now place a marker at beg and middle of rd and beg to dec 1 st before and after each marker (= 4 sts dec each time) every 1/8" (1cm) until there are 4 sts rem. Gather rem sts on a piece of yarn and fasten off. Make a tassel and fasten to top of cap. Fold cap at P rd.

CHILD'S CAP
CAP PATTERN

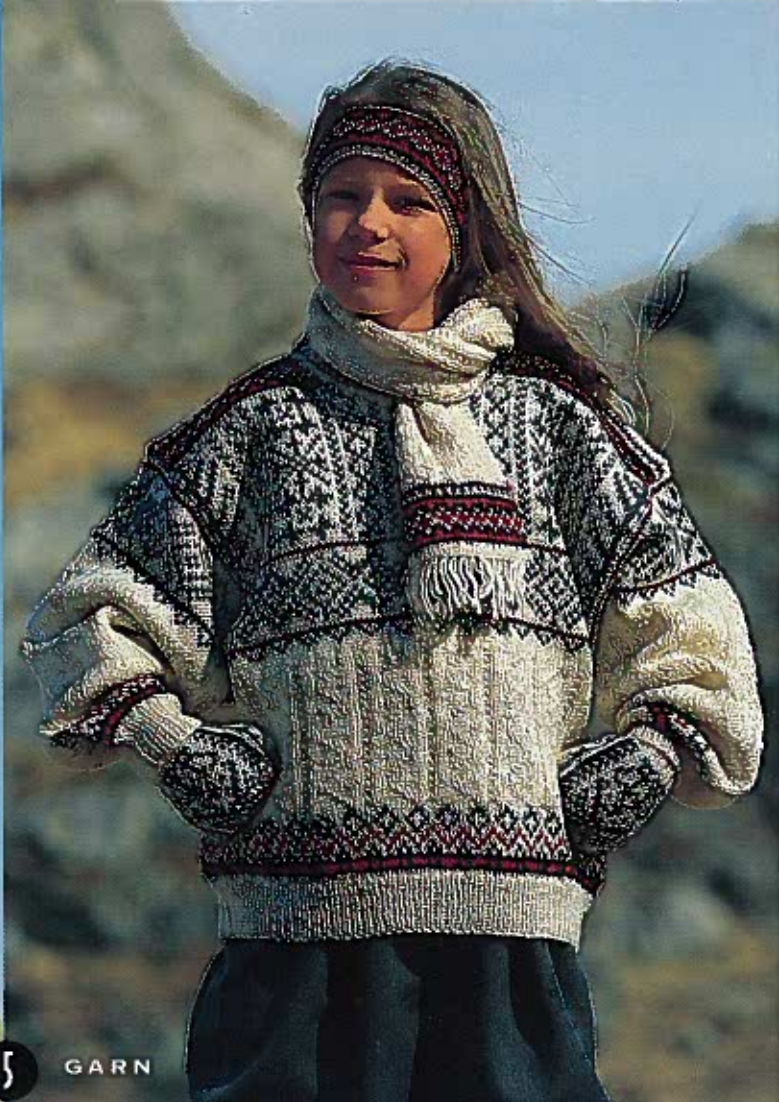
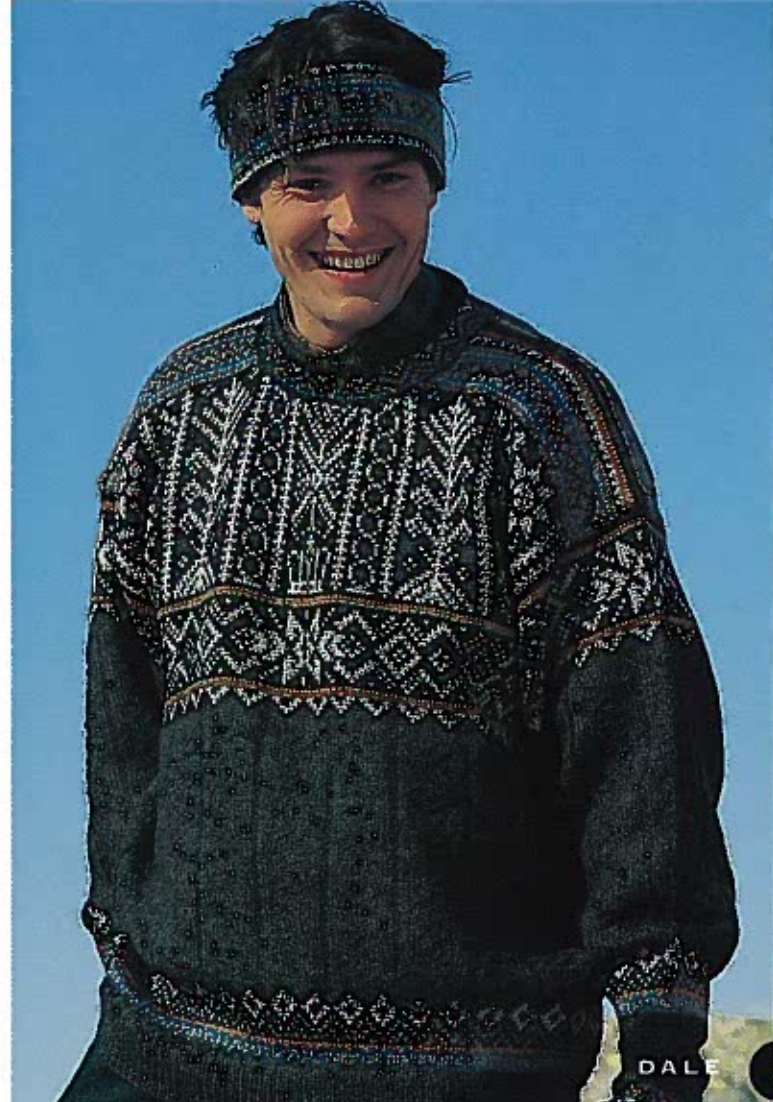
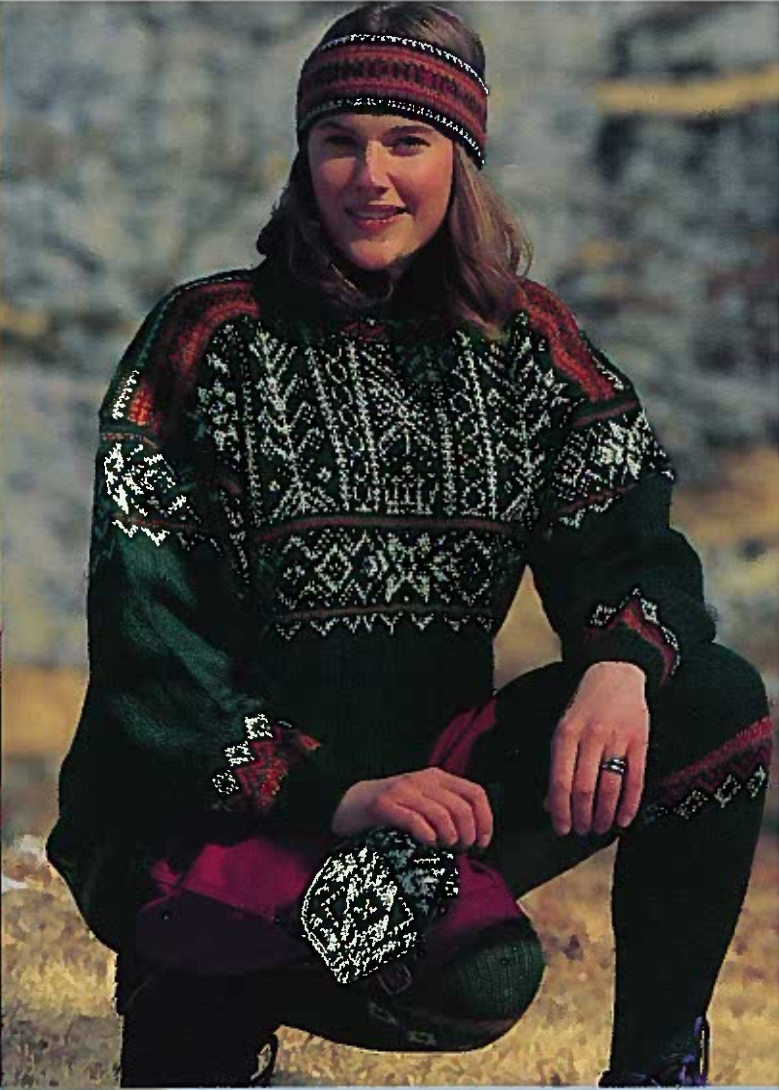
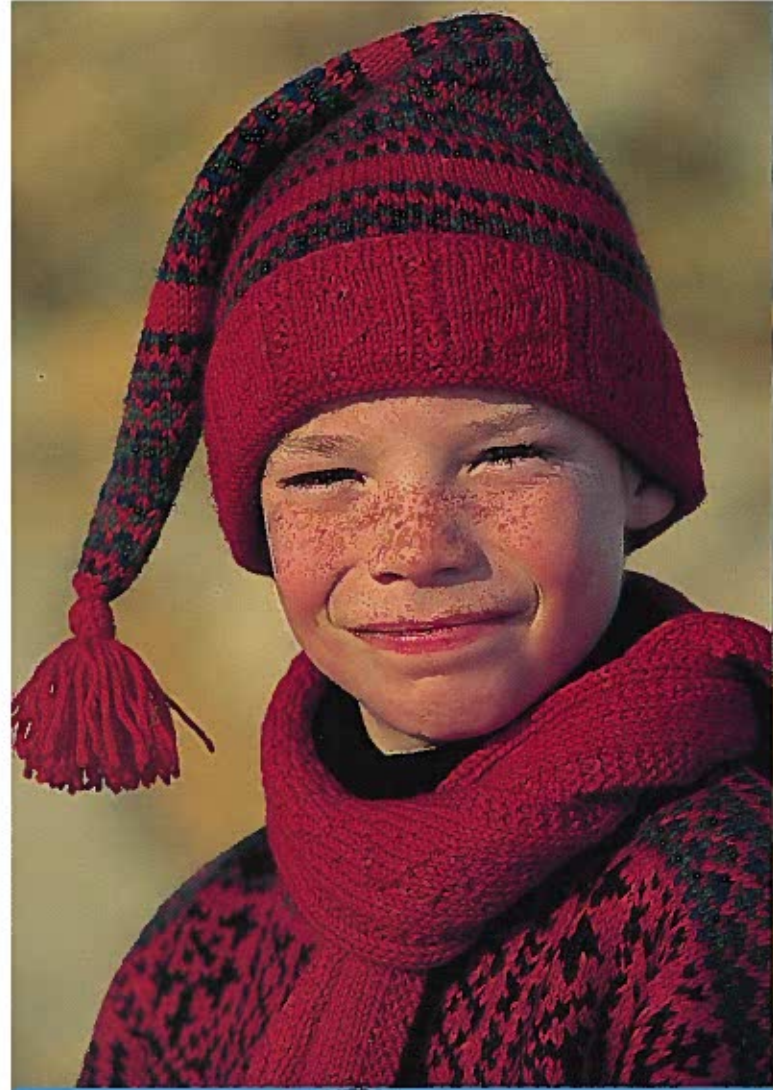


- = MC = A. natural, B. flame red, G. deep teal
- ⊗ = CC1 = A. charcoal, B. warm burgundy, G. copper
- ⊠ = CC2 = A. deep olive, B. deep blue, G. dark taupe
- ⊙ = CC3 = A. flame red, B. teal green, G. flame red
- ⊡ = CC4 = A. charcoal gray, B. black, G. natural
- = P st in MC



TRONDHEIM-GENSERENS HISTORIE

Dale design vektlegger alltid en harmonisk balanse mellom det tradisjonelle og det moderne. Inspirasjon til VM-genseren har designeren Jorunn Heggdal Cloud Nine hovedsakelig hentet fra gamle, dobbeltvevede tekstiler fra Trøndelag. Dobbeltveving er en god, gammel håndverkstradisjon i Norge, noe som også kommer frem i designelementene i genseren. Mønsteret gir assosiasjoner til eldgamle figurer fra primstaver og runer. Her finner vi spennende symboler fra en svunnen tid, med klare historiske røtter, men som likevel gir et moderne uttrykk.





*T*mønsteret til genseren kjenner vi igjen versjoner av «Livets Tre» og Kronemotivet, som ofte forekommer i gamle vevnader. I dette tilfellet gir kronemotivet assosiasjoner til Trondheim og byens 1000 års jubileum.

Åttebladrosen fremstilt som et solsymbol danner et blikkfang i midten av genseren. Vi ser også en annen variant av åttebladrosen, hvor den fremstår som en plante. En elegant og fargerik bord danner avslutningen på skulder, som et vevet bunadsbånd. På ryggsiden finner vi innfelt en diskret tekst med «VM Trondheim 1997», som knytter genseren direkte til sportsarrangementet.



1 Barnestrømper 3 Pannebånd, voksen 5 Pannebånd, barn 6 Lue 2, voksen 7 Lue 3, voksen
 2 Barnelue II 4 Pannebånd, voksen



1 Lue 1, voksen 3 Barneskjerf 5 Barnevotter 7 Votter, voksen 9 Barnelue III
 2 Barnestrømper 4 Skjerf, voksen 6 Pannebånd, voksen 8 Skjerf, voksen 10 Barnelue I

*Vær aldri i tvil om hvem som lager den originale VM-genseren!
Helt siden 1956 har Dale levert den offisielle genseren for den norske
OL-troppen og skitroppene til hver eneste olympiade og verdensmesterskap.
Dale står for kvalitet, norsk tradisjon og ikke minst evne til
fornyelse og skape plagg som både våre skitropper og forbrukere i
inn- og utland ønsker.*



Vi ønsker hopplandslaget lykke til i vintersesongen 1997



DALEGARN

DALE GARN & TRIKOTASJE AS
5280 DALEKVAM · TLF. 56 59 65 51 · FAX 56 59 67 32

**Jeg ønsker DALEGARN DESIGNHEFTER
tilsendt gratis**

Send i konvolutt til:
DALE GARN & TRIKOTASJE · 5280 DALEKVAM

NAVN _____

ADRESSE _____

POSTNR./STED _____

VM 97

FORHANDLER:

Dersom du har sendt inn kupong til Dalegarn tidligere, er du allerede registrert i vår adresseliste.