

R O W A N

3D Blocks Throw

by Kaffe Fassett



YARN

Rowan Summer Tweed

A	Navy	547	3	x 50gm
B	Reed	514	1	x 50gm
C	Storm	521	2	x 50gm
D	Toast	530	3	x 50gm
E	Sunset	509	2	x 50gm
F	Smoulder	522	2	x 50gm
G	Torrid	536	1	x 50gm
H	Butterball	538	1	x 50gm
I	Rush	507	2	x 50gm
J	Mango	542	1	x 50gm
K	Hedgerow	550	2	x 50gm
L	Jardinier	544	1	x 50gm
M	Blueberry	525	1	x 50gm
N	Denim	529	1	x 50gm
O	Loganberry	546	1	x 50gm
P	Oats	508	2	x 50gm
Q	Harbour	549	2	x 50gm

NEEDLES

1 pair 5mm (no 6) (US 8) needles
4.50mm (no 7) (US 7) crochet Hook

TENSION

16 sts and 23 rows to 10 cm measured over st st using 5mm (US 8) needles

FINISHED SIZE

Completed throw measures 116cm (45½in) wide and 140cm (55in) long

Using 5mm (US 8) needles and yarn A cast on 180sts. Beg and ending rows as indicated, using the **intarsia** technique as described on the information page, cont in patt from chart, which is worked entirely in st st beg with a K row, until all 312 rows have been worked ending with RS facing for next row. Cast off.

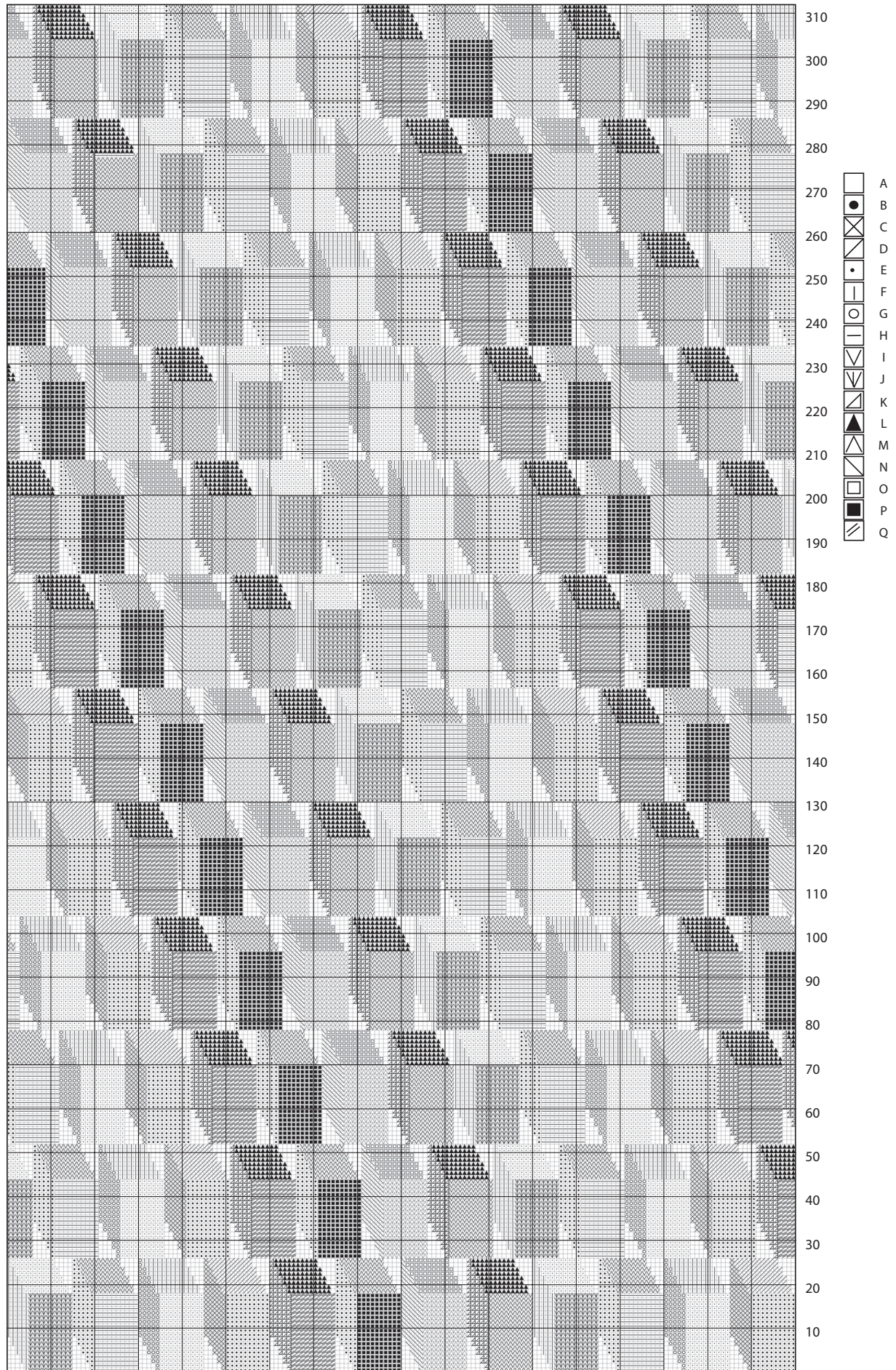
MAKING UP

Press as described on the information page.

Edging

With RS facing, using 4.50mm (US 7) crochet hook and yarn A, attach yarn at centre of cast on edge, 1 ch (does NOT count as st), work dc s evenly around entire throw, work 3 dc s into each corner point, ss to dc at beg of round.

Work 2 more rounds, working 3 dc s into each corner. Fasten off.



All right reserved. Reproduction in whole or any part of all material, including illustrations, in this brochure is strictly forbidden. No part maybe reproduced, stored in a retrieval system, or transmitted in any form or by any means electronic, electrostatic, magnetic tape, mechanical, photocopying, recording or otherwise without prior permission of the copyright owners having been given in writing. The designs in this brochure are copyrighted and must not be knitted for re-sale. Reproduction of this publication is protected by copyright and is sold on the condition that it is used for non-commercial purposes. Yarn quantities are approximate as they are based on average requirements. Colour reproduction is as close as printing will allow.

First published in Great Britain in 2010 by Rowan Yarns Ltd, Green Lane Mill, Holmfirth, West Yorkshire, England, HD9 2DX Internet: www.knitrowan.com Email: mail@knitrowan.com © Copyright Rowan 2010