



# Mini Squares Cushions

by Kaffe Fassett



## YARN

### Rowan Summer Tweed

#### Large Cushion

A	529	Denim	3	x 50gm
B	500	Powder	5	x 50gm
C	508	Oats	1	x 50gm
D	542	Mango	1	x 50gm
E	528	Brilliant	1	x 50gm
F	549	Harbour	3	x 50gm
G	546	Loganberry	1	x 50gm
H	552	Bamboo	1	x 50gm
I	509	Sunset	3	x 50gm
J	543	Sweetpea	1	x 50gm
K	538	Butterball	1	x 50gm
L	551	Tonic	3	x 50gm
M				

#### Small Cushion

A	515	Raffia	2	x 50gm
B	508	Oats	3	x 50gm
C	549	Harbour	1	x 50gm
D	537	Summerberry	1	x 50gm
E	542	Mango	1	x 50gm
F	525	Blueberry	1	x 50gm
G	543	Sweetpea	1	x 50gm
H	528	Brilliant	1	x 50gm
I	509	Sunset	1	x 50gm
J	500	Powder	1	x 50gm
K	538	Butterball	1	x 50gm
L	536	Torrid	1	x 50gm
M	544	Jardinier	1	x 50gm

## NEEDLES

1 pair 5mm (no 6) (US 8) needles

5mm (no 6) (US 8) circular needle (large cushion only)

## TENSION

16 sts and 23 rows to 10 cm measured over st st using 5mm (US 8) needles

## EXTRAS

### Large Cushion

1 x 90cm (35in) cushion pad

1m fabric – Kaffe Shot Cotton: Blue Denim

### Small Cushion

1 x 60cm (24in) cushion pad

1m fabric – Kaffe Shot Cotton: Caramel 59

## FINISHED SIZE

### Large Cushion

Approx 90cm (35in) square

### Small Cushion

Approx 60cm (24in) square

## LARGE CUSHION

Using 5mm (US 8) needles and yarn A cast on 120 sts.

Beg and ending rows as indicated, using the **intarsia** technique as described on the information page, cont in patt from chart, which is worked entirely in st st beg with a K row, until all 182 rows have been worked, ending with RS facing for next row. Cast off.

## Edging

With RS facing, using 5mm (US 8) circular needle and yarn L, pick up and knit 145 sts evenly along each side of front. 580 sts.

Working in rounds throughout proceed as follows:

**Round 1:** \* K1, M1, P144, M1, rep from \* 3 times more. 588 sts.

**Round 2:** \* K1, M1, P146, M1, rep from \* 3 times more. 596 sts.

**Round 3:** Using yarn F \*K1, M1, K148, M1, rep from \* 3 times more. 604 sts.

**Round 4:** \* K1, M1, K150, M1, rep from \* 3 times more. 612 sts.

**Round 5:** Using yarn L \* K1, M1, K152, M1, rep from \* 3 times more. 620 sts.

**Round 6:** \* K1, M1, P154, M1, rep from \* 3 times more. 628 sts.

**Round 7:** \* K1, M1, P156, M1, rep from \* 3 times more. 636 sts.

**Round 8:** \* K1, M1, P158, M1, rep from \* 3 times more. 644 sts.

**Round 9:** Using yarn F \* K1, M1, K160, M1, rep from \* 3 times more. 652 sts.

**Round 10:** \* K1, M1, K162, M1, rep from \* 3 times more. 660 sts.

**Round 11:** Using yarn L \* K1, M1, K164, M1, rep from \* 3 times more. 668 sts.

**Round 12:** \* K1, M1, P166, M1, rep from \* 3 times more. 676 sts.

**Round 13:** \* K1, M1, P168, M1, rep from \* 3 times more. 684 sts.

**Round 14:** Using yarn F \* K1, M1, K170, M1, rep from \* 3 times more. 692 sts.

**Round 15:** \* K1, M1, K172, M1, rep from \* 3 times more. 700 sts.

Cast off.

### SMALL CUSHION

Using 5mm (US 8) needles and yarn A cast on 100sts.

Beg and ending rows as indicated, using the **intarsia** technique as described on the information page, cont in patt from chart, which is worked entirely in st st beg with a K row, until all 143 rows have been worked ending with **WS** facing for next row.

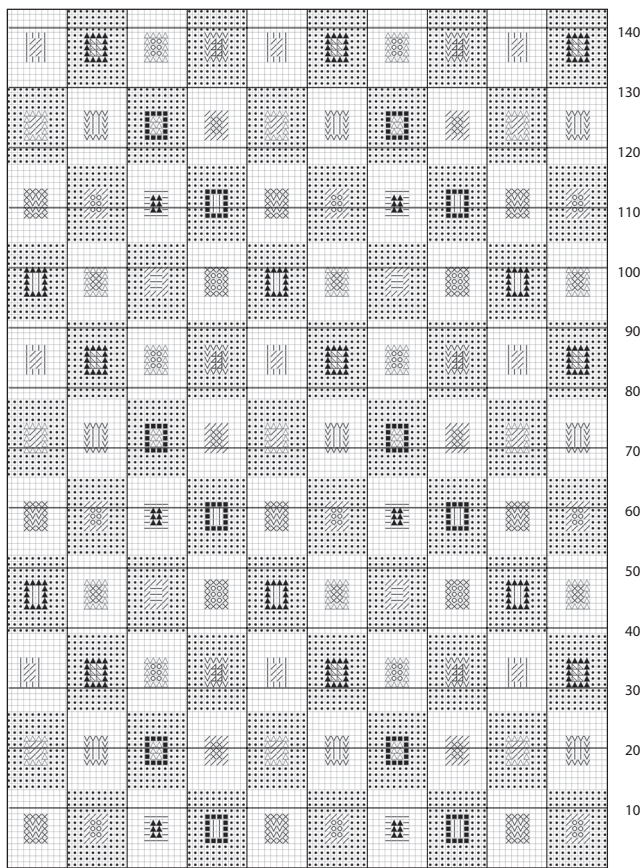
Cast off.

### MAKING UP

Press as described on the information page.

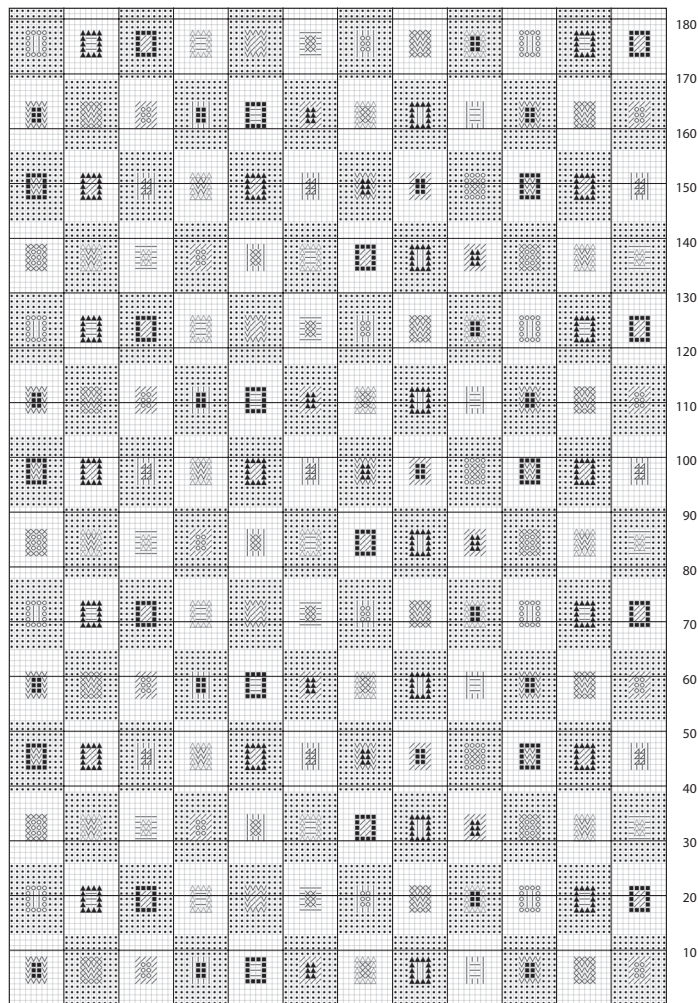
Trim backing fabric to size of knitted section plus seam allowance along all 4 edges. Sew fabric and knitted section together along 3 edges, insert cushion pad and Close 4<sup>th</sup> side.

Small Cushion



- |     |     |
|-----|-----|
| □ A | □ H |
| □ B | □ I |
| □ C | ▲ J |
| □ D | △ K |
| □ E | □ L |
| □ F | □ M |
| □ G |     |

Large Cushion



- |     |     |     |
|-----|-----|-----|
| □ A | □ E | □ I |
| □ B | □ F | ▲ J |
| □ C | □ G | △ K |
| □ D | □ H | □ L |