



Spot Cushions

by Kaffe Fassett



YARN

Rowan Summer Tweed

Small cushion

A	547	Navy	2	x 50gm
B	508	Oats	2	x 50gm
C	525	Blueberry	1	x 50gm
D	544	Jardinier	1	x 50gm
E	509	Sunset	1	x 50gm
F	542	Mango	1	x 50gm
G	549	Harbour	1	x 50gm
H	514	Reed	1	x 50gm
I	507	Rush	1	x 50gm

J
K
L

Large cushion

A	508	Oats	2	x 50gm
B	549	Harbour	1	x 50gm
C	546	Loganberry	1	x 50gm
D	542	Mango	1	x 50gm
E	537	Summerberry	1	x 50gm
F	522	Smoulder	2	x 50gm
G	514	Reed	1	x 50gm
H	528	Brilliant	1	x 50gm
I	500	Powder	1	x 50gm
J	525	Blueberry	1	x 50gm
K	536	Torrid	1	x 50gm
L	507	Rush	2	x 50gm

NEEDLES

1 pair 5mm (no 6) (USA 8) needles

5mm (no 6) (US 8) circular needle (large cushion only)

TENSION

16 sts x 23 rows over st st using 5mm (US 8) needles

EXTRAS

Small Cushion

1 x 45cm (18in) cushion pad

½ m fabric-Kaffe Shot Cotton:Prune 03

Large cushion

1 x 60cm (24in) cushion pad

1m fabric-Kaffe Shot Cotton:Lavender 14

FINISHED SIZE

Small Cushion

Approx 45cm (18in) square

Large Cushion

Approx 60cm (24in) square

SMALL CUSHION

Using 5mm (US 8) needles and yarn B cast on 72sts.

Beg and ending rows as indicated, using the **intarsia** technique as described on the information page, cont in patt from chart, which is worked entirely in st st beg with a K row, as follows:

Beg at row 3 of chart and starting point on the sts, work to the end of the row then across entire row, then from beg of row to point marked end.

Cont until all 46 rows have been worked, then repeat from row 1 until chart row 48 has been worked, then from row 1 to row 10, ending with RS facing for next row. Work should meas 45cm (18in). Cast off.

LARGE CUSHION

Using 5mm (US 8) needles and yarn B cast on 76sts.

Beg and ending rows as indicated, using the **intarsia** technique as described on the information page, cont in patt from chart, which is worked entirely in st st beg with a K row, as follows:

Beg at row 7 of chart and starting point on the sts, work to end of row then from start of row to point marked end.

Cont until all 42 rows have been worked then repeat from row 1 until chart row 48 has been worked, then from row 1 to row 18, ending with RS facing for next row. Work should meas 47cm (18½in). Cast off.

Edging

Using 5mm (US 8) circular needle and yarn L, pick up and knit 94 sts, evenly along each side. 376sts.

Working in rounds throughout proceed as follows:

Round 1: * K1, M1, P93, M1, rep from * 3 times more. 384 sts.

Round 2: * K1, M1, P95, M1, rep from * 3 times more. 392 sts.

Round 3: Using yarn F * K1, M1, K97, M1, rep from * 3 times more. 400 sts.

Round 4: * K1, M1, K99, M1, rep from * 3 times more. 408 sts.

Round 5: Using yarn L * K1, M1, K101, M1, rep from * 3 times more. 416 sts.

Round 6: * K1, M1, P103, M1, rep from * 3 times more. 424 sts.

Round 7: * K1, M1, P105, M1, rep from * 3 times more. 432 sts.

Round 8: * K1, M1, P107, M1, rep from * 3 times more. 440 sts.

Round 9: Using yarn F * K1, M1, K109, M1, rep from * 3 times more. 448 sts.

Round 10: * K1, M1, K111, M1, rep from * 3 times more. 456 sts.

Round 11: Using yarn L * K1, M1, K113, M1, rep from * 3 times more. 464 sts.

Round 12: * K1, M1, P115, M1, rep from * 3 times more. 472 sts.

Round 13: * K1, M1, P117, M1, rep from * 3 times more. 480 sts.

Round 14: Using yarn F * K1, M1, K119, M1, rep from * 3 times more. 488 sts.

Round 15: * K1, M1, K121, M1, rep from * 3 times more. 496 sts.

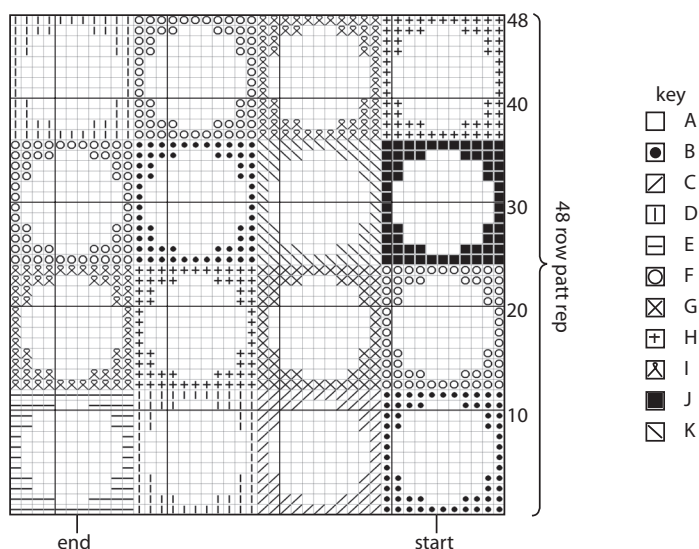
Cast off

MAKING UP

Press as described on the information page.

Trim backing fabric to size of knitted section plus seam allowance along all 4 edges. Sew fabric and knitted section together along 3 edges, insert cushion pad and close 4th side.

large cushion



small cushion

