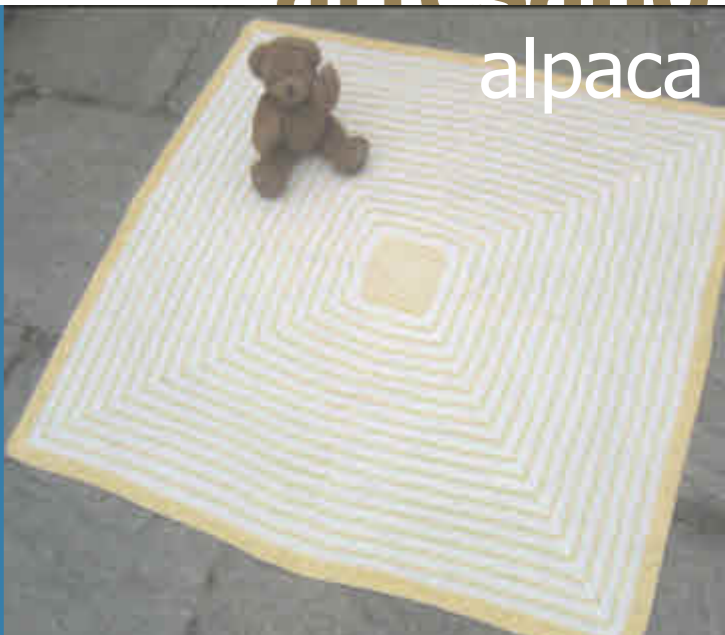




**baby love**  
by Jean Miss

**baby love**  
by Jean Miss



**artesano**  
alpaca



baby love

# cardi

By Jean Moss



## SIZES

Size 6(12, 18, 24)months - 22(24, 26, 28)" chest [56(61, 66, 71)cm]

## SAMPLES

2nd size - 12 months

## YARN

ARTESANO Alpaca in 50g balls: (131yds/120m per 50g ball)  
2(3, 3, 4) balls Cream (000) - main colour  
1 ball Lemon Yellow (93) - contrast colour

## NEEDLES

3.25mm (US 3); 3.75mm (US 5);  
circular 3.5; or size to obtain tension, markers and holders

## NOTIONS

4 buttons

## TENSION

24 sts and 32 rows = 4"/10 cms over stocking stitch.

Please work swatch and check carefully. If wrong size of needles until correct tension is achieved.

## STITCHES

Slip the first stitch and knit into the back of the last stitch on every row to make selvedge.

**Charts are read from right to left on RS rows and left to right on WS rows.**

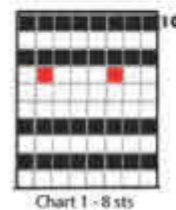
## BACK

Using smaller needles, cast on 66(72, 78, 84)sts and refer to chart 1 and work the 10 rows, centring it as follows:

Row 1 Work the last 1(0, 3, 2) sts of chart, work the 8sts 8(9, 9, 10) times across

row, work the first 1(0, 3, 2) sts - 66(72, 78, 84)sts  
Row 2 Work the last 1(0, 3, 2) sts of chart, work the 8sts 8(9, 9, 10) times across

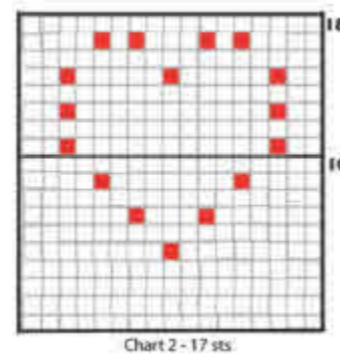
row, work the first 1(0, 3, 2) sts - 66(72, 78, 84)sts  
Change to larger needles, refer to chart 2 and work the 18 rows centring chart as follows:



Knit on RS, purl on WS - stocking st

Knit on WS, purl on RS - reverse st st

Work Knot (k1, p1, k1, p1, k1) in st to make 5 sts from 1, then pass 2nd, 3rd, 4th and 5th sts, one at a time, over first st, then slip first st onto left-hand needle and knit into back of it using background colour.



## SIZE 1

Row 1 \*work 4 sts st st, work 17 sts of chart 2; rep from \* twice, end work 3 sts st st

## SIZE 2

Row 1 work 2 sts st st, (chart 2) 4 times, work 2 sts st st

## SIZE 3

Row 1 work 5 sts st st, (chart 2) 4 times, work 5 sts st st

## SIZE 4

Row 1 \*work 3 sts st st, work 17 sts chart 2; rep from \* 3 times more, end 4 sts st st

Continuing in st st to end, when work measures 9.25(10.25, 11.25, 12.25)" [23.5(26, 28.5, 31)cm] from cast on edge, ending on WS row, **shape shoulders:**  
Cast off 7(8, 9, 9) sts at beg of next 2 rows.  
Cast off 7(8, 9, 10) sts at beg of next 2 rows.  
Cast off 8(9, 9, 10) sts at beg of next 2 rows.  
Place rem 22(22, 24, 26) sts on holder.

## LEFT FRONT

Using smaller needles, cast on 33(36, 39, 42)sts and refer to chart 1 and work the 10 rows, centring it as follows:

Row 1 work the last 0(2, 3, 1) sts of chart, \* (chart 1) 4(4, 4, 5) times, work the first

1(2, 4, 1) sts of chart  
Change to larger needles, refer to chart 2 and work the 18 rows centring chart as follows:

## SIZE 1

Row 1 work 8 sts st st, work 17 sts of chart 2, work 8 sts of st st

## SIZE 2

Row 1 work 1 st of st st, (chart 2) twice, work 1 st of st st

## SIZE 3

Row 1 work 2 st of st st, chart 2, 1 st of st st, chart 2, work 2 st of st st

## SIZE 4

Row 1 work 3 st of st st, chart 2, 2 sts of st st, chart 2, work 3 st of st st

Continuing in st st to end, when work measures 5(5.75, 6.5, 7)" [12.5(14.5, 16.5, 17.75) cm] from cast on edge, ending on RS row, **shape neckline:**  
Decrease 1 st at beg of next and then at neck edge every 3rd row 8(6, 8, 8) times, then every 4th row 2(4, 3, 4) times - 22(25, 27, 29)sts. When work measures 9.25(10.25, 11.25, 12.25)" [23.5(26, 28.5, 31)cm] from cast on edge,

ending on WS row, **shape shoulders:**  
Cast off 7(8, 9, 9) sts at beg of next row. Work 1 row.  
Cast off 7(8, 9, 10) sts at beg of next row. Work 1 row.  
Cast off rem 8(9, 9, 10) sts

## RIGHT FRONT

Work as for Left Front reversing all shapings and centring of charts.

## SLEEVES

Using smaller needles, cast on 36(38, 38, 42)sts and refer to chart 1 and work the 10 rows, centring it as follows:

Row 1 work the last 2(3, 3, 1) sts of chart, \* (chart 1) 4(4, 4, 5) times, work the first 2(3, 3, 1) sts of chart

Change to larger needles, refer to chart 2 and work the 18 rows centring chart as follows:

## SIZE 1

Row 1 work 9 sts st st, work 17 sts of chart 2, work 10 sts of st st

## SIZE 2

Row 1 work 10 sts st st, work 17 sts of chart 2, work 11 sts of st st

## SIZE 3

Row 1 work 10 sts st st, work 17 sts of chart 2, work 11 sts of st st

## SIZE 4

Row 1 work 12 sts st st, work 17 sts of chart 2, work 13 sts of st st

**At the same time,** inc 1 st at both ends of every 4th row 9(10, 11, 0) times, then every 6th row 0(0, 0, 12) times - 54(58, 60, 66)sts. Cont in st st until work measures 6.5(7, 7.5, 11)" [16.5(17.75, 19, 28)cm] from cast on edge, ending on WS row and then cast off.

## FINISHING

Use a small neat backstitch on edge of work for seams. Join shoulder seams.

**Collar and buttonbands** (worked in one piece). Place markers for 4 buttonholes on right (girls) or on left (boys) front, first 0.5" from lower edge, the fourth 0.25" below beg of neck shaping and 2 others placed evenly between. With RS facing and smaller needles, beg at lower edge of right front, pick up and k25(28, 32, 35)sts to beg of v-neck shaping, 27(30, 32, 35)sts to shoulder - 52(58, 64, 70)sts. Place all sts on hold. In the same way, beg at left shoulder seam and pick up as for right front along left front. Place sts on 2nd holder. With RS facing and circular needle, pick up and k22(22, 24, 26) sts from holder at back neck. Work back and forth in garter st as foll:  
Turn and k22(22, 24, 26) sts, then k2 from right

front holder. Turn and k24(24, 26, 28) sts, then k2 from left front holder. In same way, cont to k2 sts from holders at end of each row 8(5, 1, 1) times in all at each end, then 1 st at end of each row 11(20, 30, 33) times at each end - 76(82, 88, 96)sts. All sts between beg of neck shaping and shoulder are now

incorporated into collar.

**Next row** Beg at lower left front, k rem sts on hold and collar sts. Knit a further 1(1,3,3) rows then work row placing buttonholes at markers as foll: Cast off 2 sts; on next row cast

on 2 sts over those cast off. Knit 4 more rows and then cast off using larger needles.

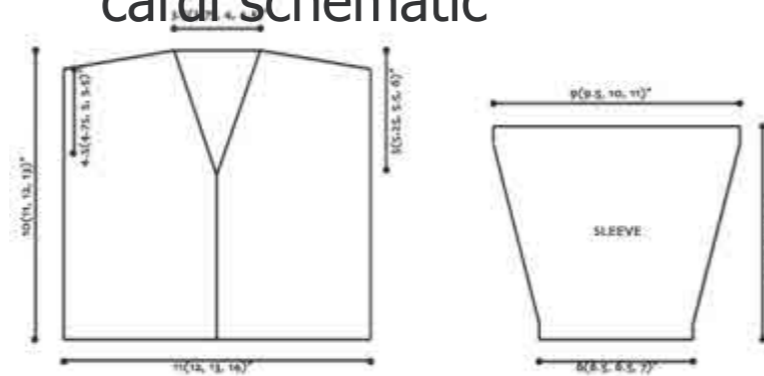
Set in sleeves. Sew side and sleeve seams in one line.

Sew on buttons.

**Two colour version**

Work all Chart 1s in Contrast colour, working knots in main colour. Change to main colour and work to end, working all knots in contrast colour. For collar, work in contrast colour Throughout.

## cardi schematic



## Notes

