



MOMENTS 002

INSTRUCTIONS

Your Local Yarn Shop – The Best Source For Advice

Before you begin knitting...

...make a gauge swatch. Use the recommended needles, yarns and pattern stitch for your gauge swatch. It should measure approx. 4¾" x 4¾" [12cm x 12cm]. Cast on and bind off rows, as well as selvage stitches should not be included in the measurement. Pin your swatch and block with a damp towel as you would the finished pieces of the garment. Count stitches and rows over 4" [10cm].

- If you have too many stitches and rows, switch to larger needles.
- If you have too few stitches and rows, switch to smaller needles.

Abbreviations

acc	= according
alt	= alternate
beg	= beginning
ch	= chain
col	= color
cn	= cable needle
dec(s)	= decrease(s)
fol	= following
inc(s)	= increase(s)
k	= knit(ting)
k2tog	= knit 2 together
ktbl	= knit through back loop
kwise	= knitwise
lh	= left hand
M1	= make one
p	= purl
pat	= pattern
pso	= pass over
ptbl	= purl through back loop
pwise	= purlwise
rep	= repeat(s)
rev sc	= reverse single crochet
rev St st	= reverse stockinette st
r	= row(s)
rh	= right hand
rnd(s)	= round(s)
RS	= right side
sc	= single crochet
SKP	= slip 1 st, knit 1 st, pass slipped st over k st
sl	= slide
sl st	= slip stitch
st(s)	= stitch(es)
St st	= Stockinette stitch [K on RS, p on WS]
WS	= wrong side
wyib	= with yarn in back
wyif	= with yarn in front
yo	= yarn over

Color reproduction is as close as printing will allow. Please refer to the color number stated on the ball band when buying yarn for a project. The designs in this magazine are copyrighted. No part may be reproduced, stored in a retrieval system or transmitted in any form or by any means electronic, electrostatic, magnetic tape, mechanical photocopying, recording or otherwise without prior written permission of the copyright owners.

Service

Please visit our website for answers to questions about our designs as well as helpful knitting advice. Our website also lists information on how to contact us.

We make every effort to publish correct and complete instructions. We carefully review each pattern, but unfortunately mistakes do happen. Please check our website for errata.

When contacting us, please specify the name of the pattern book and design number in question and provide as much information as possible.

Thank you.

www.coatscrafts.com

www.knitSMC.com

Needles

Knitting needles are available in a wide variety of styles and materials, but which needles to use is ultimately a personal choice, whether it's wood, bamboo or metal. It is more comfortable to use circular needles for flat knitting with large numbers of stitches, such as jackets and shawls. Circular needles are always used when knitting in the round. You will need circular needles in different lengths, depending on the circumference of your project.

Please refer to the 'Materials' section in our pattern instructions for the size and type of needles required.

Pattern Skill Ratings

For your convenience, all our patterns indicate skill level.

Very easy

Basic stitches such as knit and purl and easy shaping.

Easy

Simple stitch and color patterns and easy shaping.

Intermediate

More complicated stitch patterns, such as lace, cable and Intarsia. More advanced shaping and finishing techniques.

Experienced

Intricate stitch and color patterns, such as Fair Isle and/or involved shaping and finishing techniques, such as short rows.

Care

Your finished project deserves the best of care. Instructions on how to care for the yarn can be found on the ball band. Keep one ball band for reference and also keep a small amount of yarn for possible mending.

Sizing

Most designs are written in 3-5 sizes. However, not every design is suitable for each size, due to pattern and yarn restraints.

Sizing Charts

Women	XS – 32/34	S – 36/38	M – 40/42	L – 44/46	XL – 48/50
Bust	28-30¾" [71-78cm]	31½-34¾" [80-88cm]	35¾-37¾" [91-96cm]	39¾-41¾" [101-106cm]	43¾-45¾" [111-116cm]
Waist	22¾-24¼" [58-62cm]	26-27½" [66-70cm]	29¼-30¾" [74-78cm]	32¼-34¾" [82-88cm]	36¼-38½" [92-98cm]
Hips	32¼-33¾" [82-86cm]	35½-37" [90-94cm]	38½-40¼" [98-102cm]	41¾-43¾" [106-110cm]	45¾-48" [116-122cm]
Base of neck to waist	16½" [42cm]	16½" [42cm]	17" [43cm]	17" [43cm]	17" [43cm]
Wrist to armhole	16½" [42cm]	16½" [42cm]	17" [43cm]	17" [43cm]	17¼" [44cm]
Upper arm	10¼" [26cm]	11" [28cm]	12¼" [31cm]	13" [33cm]	14½" [37cm]

Design 1762 • Shrug

**Size XS-S, M and L-XL**

Instructions are given for first size. Figures in parenthesis refer to larger sizes. When only one figure is given, it applies to all sizes.

Materials: approx. 8 (9, 10) balls (approx. 132yd / 120m each) of **SMC select Silk Wool** (64% wool, 27% silk, 9% polyamide) in color 07114 black. Size 8 [5mm] needles.

Rib Pattern: k2, p2.

Astrakhan Pattern:

Row 1 [RS]: p all sts.

Row 2: ★ [k1, p1, k1] all in same st, p3tog, rep from ★, end [k1, p1, k1] all in same st.

Row 3: p all sts.

Row 4: ★ p3tog, [k1, p1, k1] all in same st, rep from ★, end p3tog.

Repeat rows 1-4 throughout.

Note: st count varies from row to row.

Gauge: 22 sts and 24 rows = 4" [10 cm] in astrakhan st.

Shrug: worked side to side in one piece. Arrow on schematic shows direction of work.

Cast on 90 (98, 106) sts. P first [RS] row, then position sts as foll: selvage st; beg with k2 and end with p2, work in rib pat for 8 sts, work 81 (89, 97) sts in Astrakhan pat. Note: RS row ends with last pat st, WS row begs with first pat st [= no selvage st].

Work in pat as established for 8 (8¼, 8½)" [20.5 (21, 21.5) cm], ending with a pat row 3. Place armhole marker [B on schematic] at left edge and cont as foll: selvage st, work 8 sts in rib pat as established, work 72 (80, 88) sts in Astrakhan pat; beg with p2, work in rib pat for 8 sts, selvage st. Cont in pat as established until piece measures 22½ (23¼, 24¼)" [57 (59, 61.5) cm] from beg. Place armhole marker [C on schematic] at left



edge and cont as foll: selvage st, work 8 sts in rib pat as established, work (81, 89, 97) sts in Astrakhan pat.

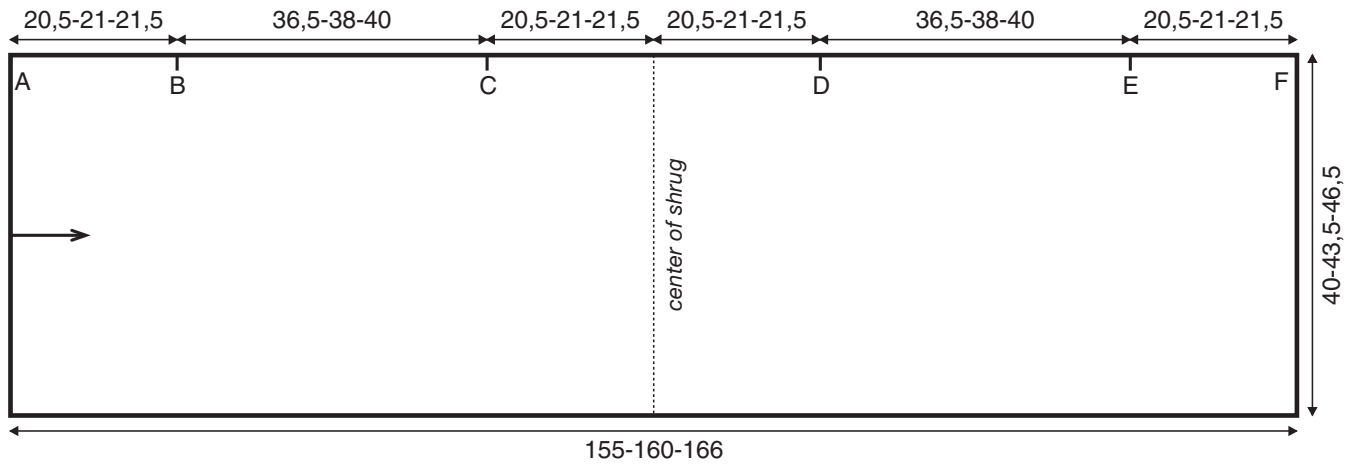
Cont in pat as established until piece measures 30½ (31½, 32¾)" [77.5 (80, 83) cm] from beg. Place center marker at left edge.

Cont in pat as established until piece measures 38½ (39¾, 41¼)" 98 (101, 104.5) cm] from beg, ending with a pat row 3. Place armhole marker [D on schematic] at left edge and cont as foll: selvage st, work 8 sts in rib pat, work 72 (80, 88) sts in Astrakhan pat; beg with p2, work 8 sts in rib pat, selvage st.

Cont in pat as established until piece measures 53 (54¾, 56¾)" [134.5 (139, 144.5) cm] from beg. Place armhole marker [E on schematic] at left edge and cont as foll: selvage st, work 8 sts in rib pat as established, work 81 (89, 97) sts in Astrakhan pat.

Cont in pat as established until piece measures 61 (63, 65¼)" [155 (160, 166) cm] from beg.

Finishing: fold piece in half, matching A to F on schematic. Sew cast-on and bind-off edge tog. Next, match B to C and D to E. Sew seam between B/C and D/E. Ribbed edges remain open for armholes.



Schematic

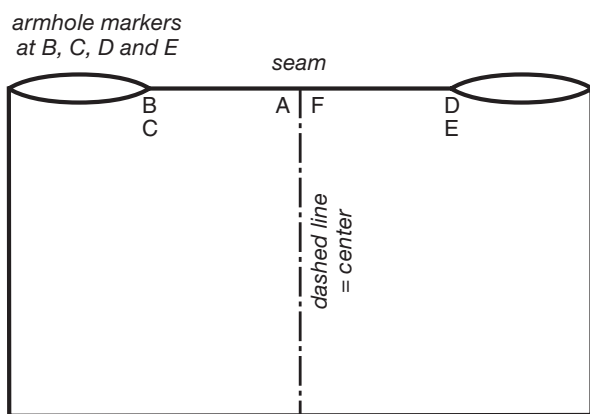


Illustration
Back view of shrug when worn

